



IBM Thinkpad T60 Palm Rest Replacement

Always power down the computer before...

Written By: Dylan Kratochvil



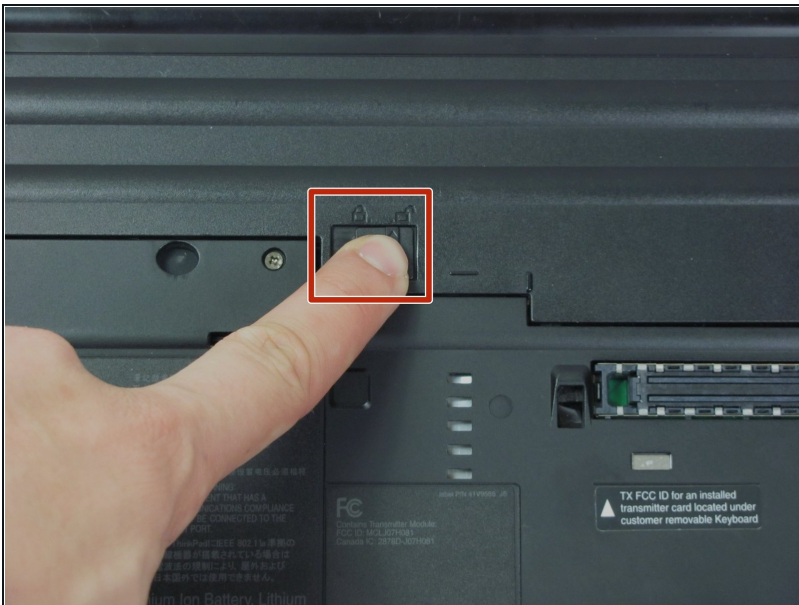
INTRODUCTION

Always power down the computer before attempting any installation/removal of any hardware components. Be sure to remove the AC adapter and all cables from the computer. If the computer has been on, wait several minutes before beginning the procedure to ensure all parts have cooled down.

TOOLS:

Phillips #0 Screwdriver (1)

Step 1 — Battery



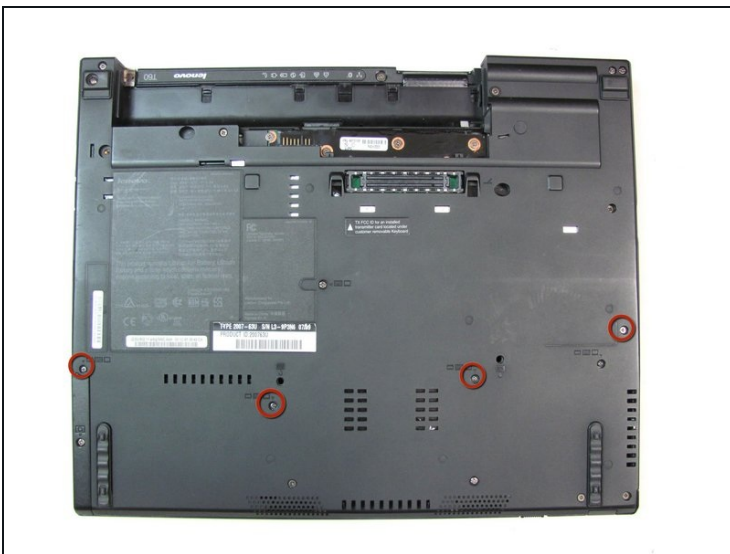
- Turn the computer over to see the small tab on the battery located near the top of the Thinkpad.
- Use your finger to slide the tab to the right to unlock the battery.

Step 2



- Once the tab is in the unlocked position (far right), pull the battery outwards away from the Thinkpad.
- The battery is now disconnected.

Step 3 — Palm Rest



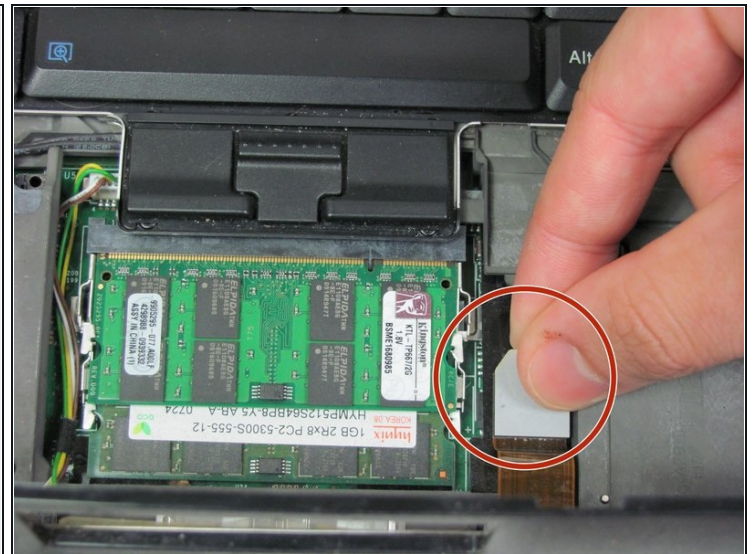
- Using a #0 Phillips screwdriver, remove the four 17.0 mm screws.

Step 4



- Turn the computer back over, so the keyboard is facing upwards.
- Open the display to access the palm rest. Apply pressure to the sides of the palm rest so that it bends upwards in the middle. Gently lift away from the computer.

Step 5



- Slightly lift the palm rest away from the computer.
⚠ The touchpad's data cable connects the palm rest to the base unit. BE CAREFUL!
- Detach the connector by pulling upwards on the white tab.

To reassemble your device, follow these instructions in reverse order.

