



# HP Mini 311 Hard Drive Replacement

This installation guide will provide step-by-step instruction on replacing the hard drive in a HP Mini 311.

Written By: Christian Santoyo



---

## INTRODUCTION

If your HP Mini 311 has ran out of memory or you desire to have more memory, change the hard drive on your device.



### TOOLS:

- [Phillips #00 Screwdriver](#) (1)
-

## Step 1 — Battery



- Lay the laptop on a flat surface, bottom side up and slide the two battery release latches toward the outside of the case.

## Step 2




- Slide the battery away from the device to remove.

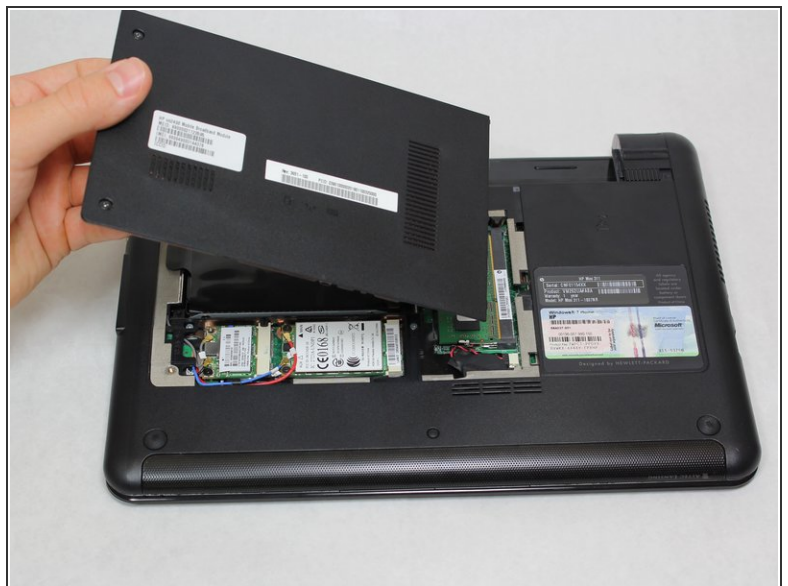
## Step 3 — Memory Shield



- With the device still in a bottom side up position, proceed to unscrew the two 4.8mm Phillips 00 screws from the memory shield.

 The screws will remain in the shield.

## Step 4



- Lift the memory shield up and remove from the laptop.



## Step 5 — Hard Drive



- Grab the left black, plastic tab and carefully pull upward.

⚠ Be sure to pull carefully. Pulling too forcefully may damage the tab.

## Step 6



- Grab a hold of the wire connecting the hard drive and the device.
- Pull upward, perpendicular to the surface of the laptop, releasing the connector tethering the hard drive to the motherboard.

To reassemble your device, follow these instructions in reverse order.