



# One Education Infinity CMOS Battery Replacement

A replacement guide describing how to replace the CMOS battery in the One Education Infinity laptop.

Written By: Austin Blakely



This document was generated on 2020-11-28 07:52:33 AM (MST).

# INTRODUCTION

This guide describes the process of removing and replacing the CMOS battery in the One Education Infinity.

The CMOS battery can assist with software startup and keeps the internal clock running while the device is turned off. If your computer has difficulty during startup but otherwise functions normally, or if your computer forgets what time it is when you turn it on, you may have an issue with the CMOS battery. Luckily, this part is easily accessible within the bottom case of the device, so replacement will be fairly simple once the device is open. Be sure to [dispose of old batteries safely](#).


---

## TOOLS:

- [Metal Spudger](#) (1)
  - [Phillips #00 Screwdriver](#) (1)
  - [iFixit Opening Tools](#) (1)
  - [Spudger](#) (1)
-

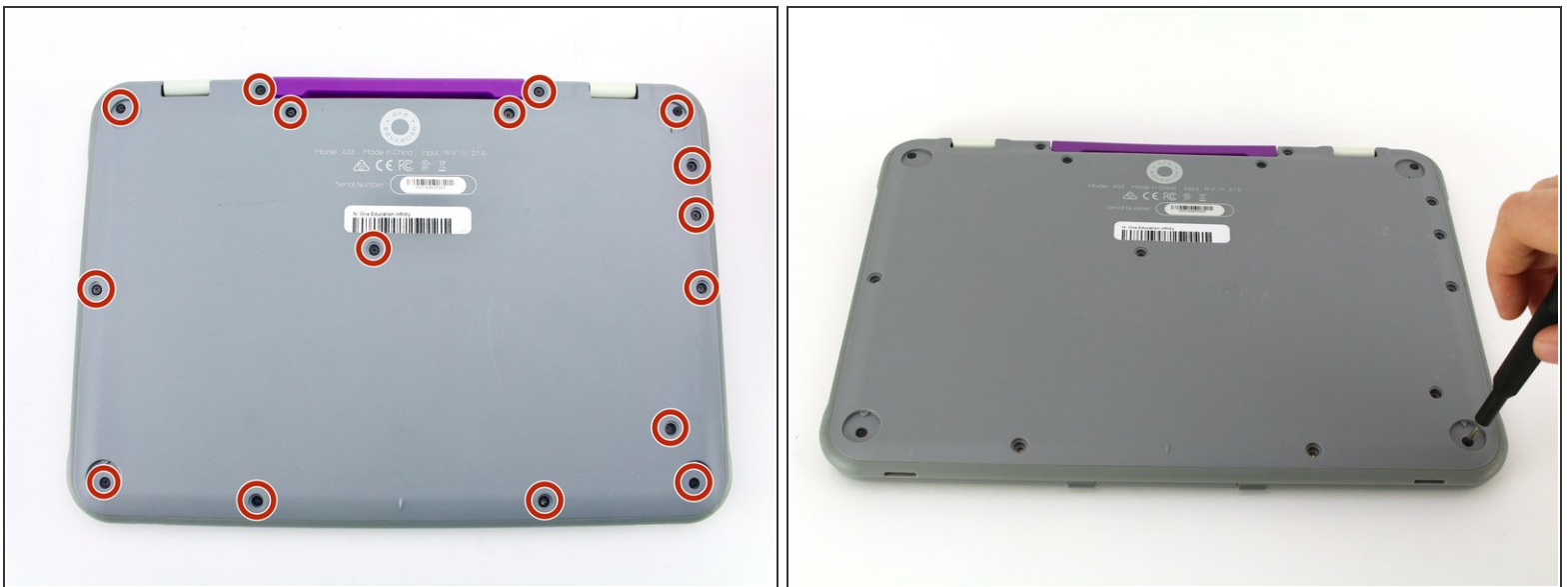
## Step 1 — Back Case



 Always power off your device before beginning disassembly.

- Remove the screw covers and rubber feet from the bottom of the laptop with a metal spudger.

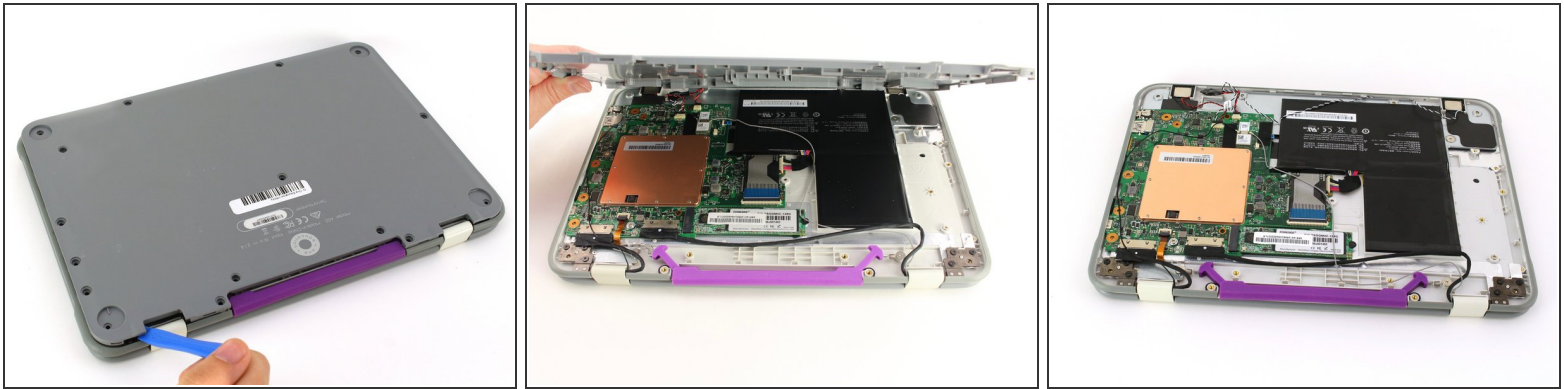
## Step 2



- Using a Phillips #00 screwdriver, remove the sixteen 5.0 mm black screws from the back panel.



## Step 3



- Using the iFixit plastic opening tool or spudger, start near the white hinge of the device and lift along the outer edges of the device until all clips are released.
  - Lift the back case off of the device.
- i** Removing the back may create a loud snapping noise.

## Step 4 — Battery



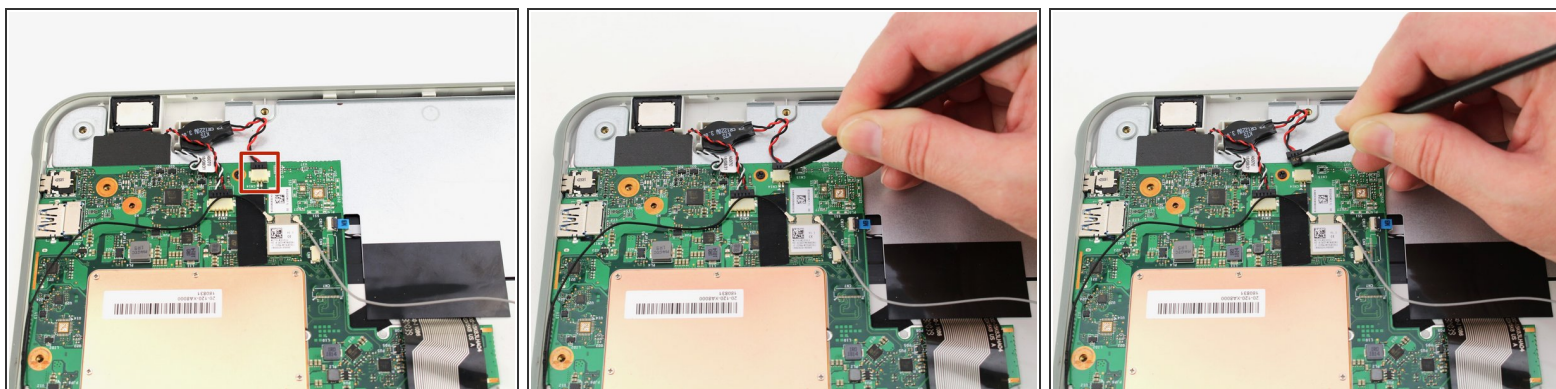
- i** There may be black tape inside your device covering components or holding down wires. This tape is unimportant for the function of the device, and can be removed.
- Carefully wiggle the battery cable to the right and out of the port with a plastic spudger.

## Step 5



- Wedge a plastic spudger underneath the battery from the upper edge and slide it carefully along the length of the battery to separate it from the case.
- ⓘ There is a mild adhesive holding down the battery. Take care not to puncture or excessively bend the battery while freeing it from the adhesive.
- Lift the battery out from the internal case.

## Step 6 — CMOS Battery



- Use a plastic spudger to slide out the cable connector attached to the CMOS battery from the motherboard.

## Step 7



- Peel the CMOS battery gently from the back case, as there is a layer of light adhesive holding it down.
- Remove the CMOS battery.

To reassemble your device, follow these instructions in reverse order.