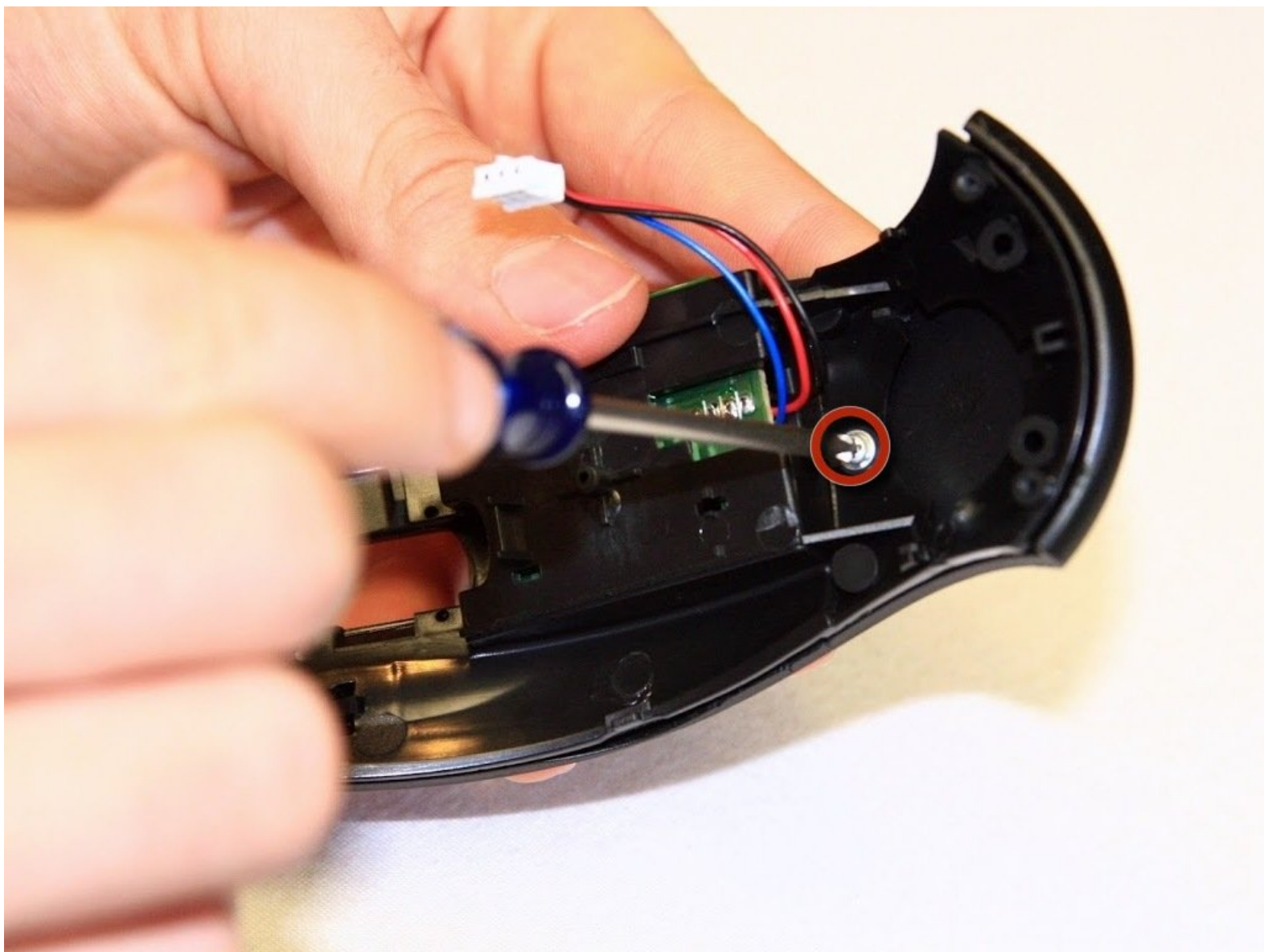




Top Shell

Separate the outermost shell from the rest of the mouse.

Written By: David

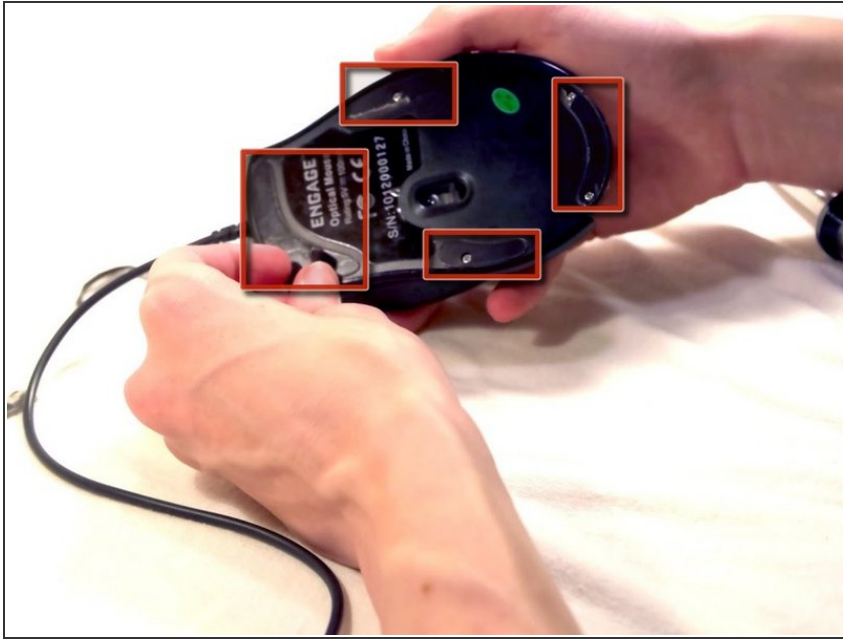




TOOLS:

- [Phillips #1 Screwdriver](#) (1)
 - [Spudger](#) (1)
-

Step 1 — Engage Wired Optical Mouse Top and Outer Shell Removal



- Flip the mouse over and peel off the stickers on the perimeter of the bottom of the mouse.

Step 2



- Use the Phillips #1 screwdriver to remove four 5 mm screws from the bottom of the mouse.
- Use the Phillips #1 screwdriver to remove the two 9 mm screws from the bottom of the mouse.

Step 3



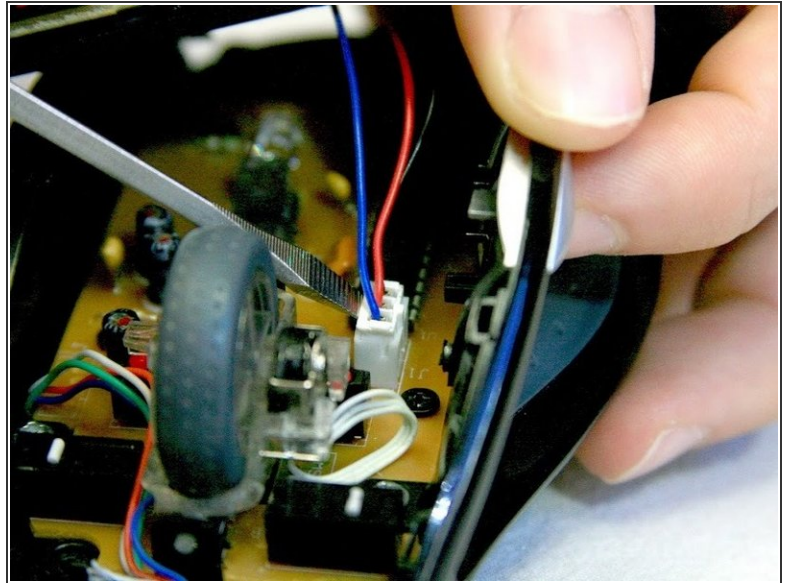
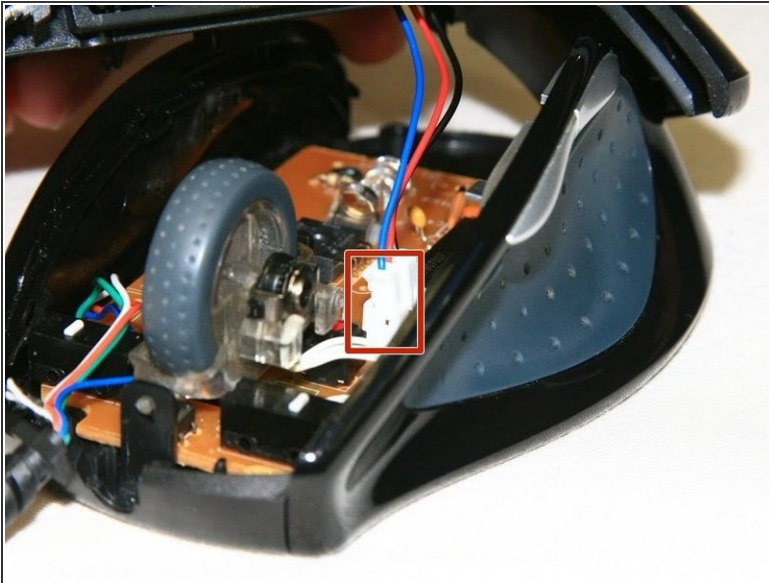
- Grab the top shell of the mouse and lift up to remove.

Step 4



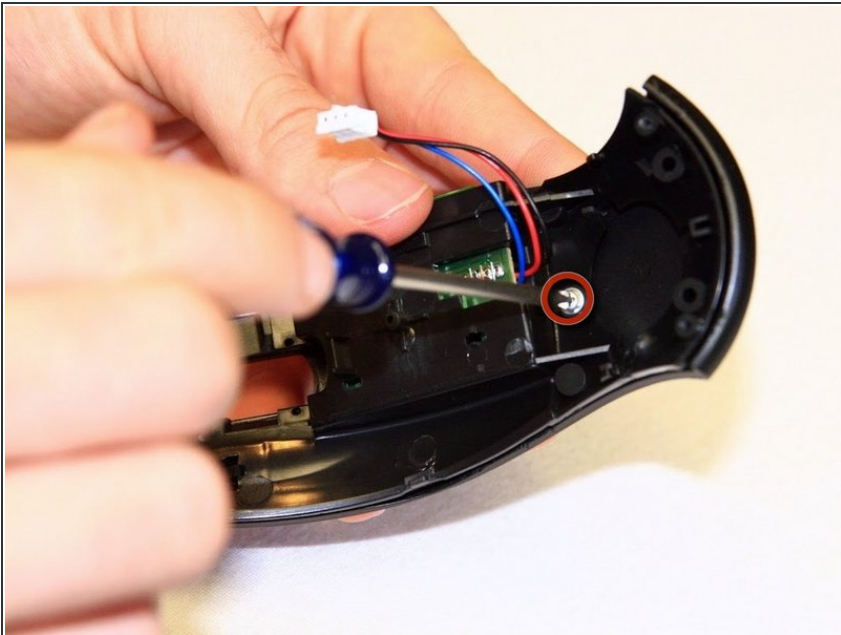
- ⚠ The capacitors on this board can release stored electrical energy if touched.
- Touch your capacitor discharge tool to the capacitor leads on the board to release the stored energy. If leads are inaccessible, wait until you've removed the board from the mouse body.

Step 5



- Use a spudger to pry underneath the white plug and pop it out to disconnect the upper board from the lower board.

Step 6 — Top Shell



- Remove the 5 mm round head screw holding the middle piece to the top piece.
- The outermost shell will now separate from the middle structure.

To reassemble your device, follow these instructions in reverse order.

This document was generated on 2021-12-31 10:44:11 AM (MST).

