



milk frother Aerolatte

If the whisk of the milk frother doesn't turn anymore or turns only slowly you can try to change the polarity of the motor.

Written By: John Maier



INTRODUCTION

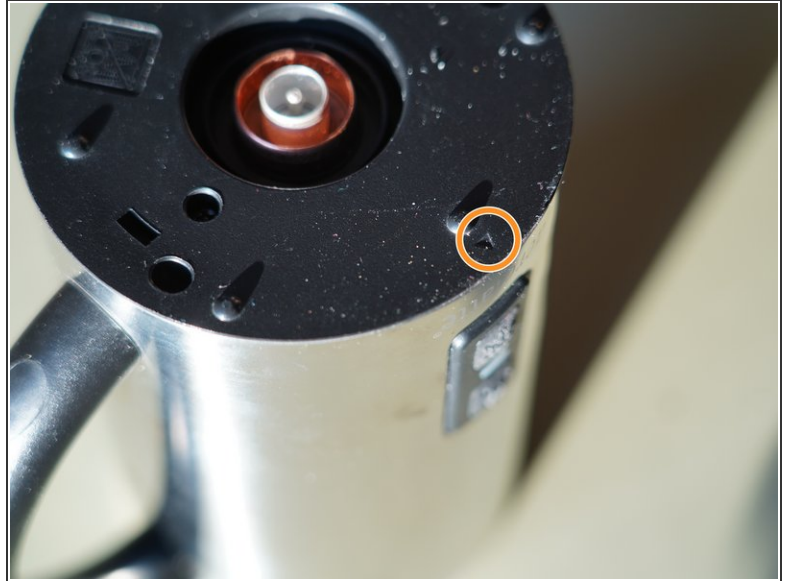
After two years of use the whisk of our milk frother turned only slowly. It could be stopped with one finger. I found an instruction that suggested to change the polarity of the motor by exchanging the connection cables. This worked with our two milk frothers.



TOOLS:

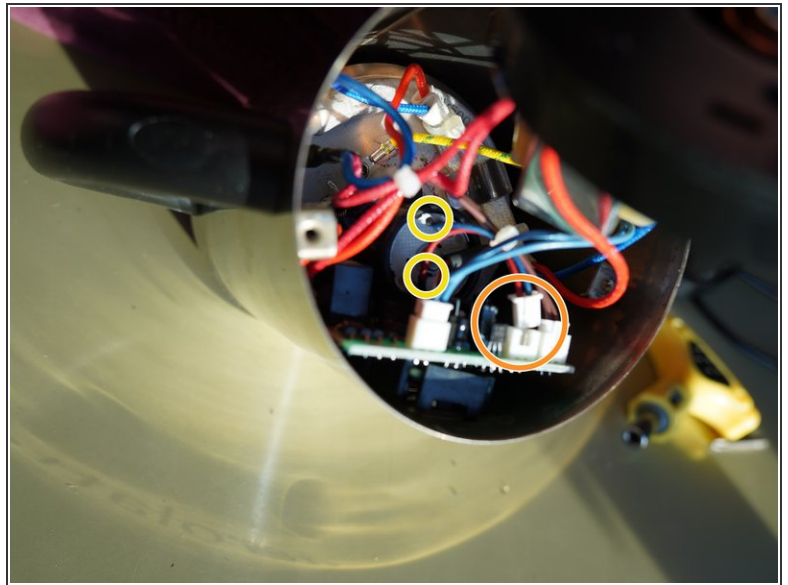
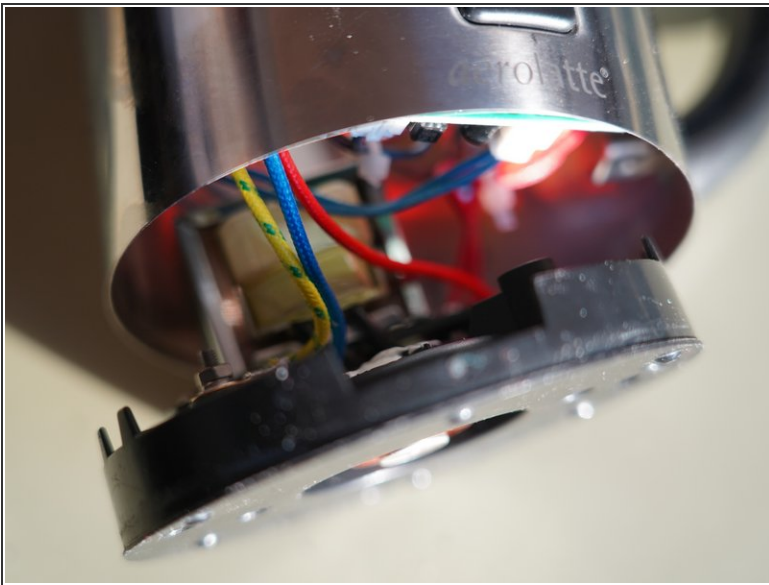
- [New Item](#) (1)
-

Step 1 — Remove bottom plate



- Remove the three screws with a screwdriver PH2
- There is a little triangle impressed in the bottom plate to show the position of the on-switch.

Step 2



- Pull the bottom plate as far away from the housing as possible.
- A red and a blue cable connect the motor and a plug. Pull out the plug from the circuit board.

Step 3



- On one side of the plug you see two slots. You can see the cable shoes in there.
- With something pointed (eg. watchmaker's screwdriver) you press in one slot to open the cable shoe's locking catch. At the same time you pull on the cable.
- Do the same with the second cable.
- Exchange the position of the cables and push the cable shoes back in the plug.

Step 4



- The milk frother is re-assembled in reverse order.
- Plug in the device, fill in some liquid and press the "cold foam" button. Now the motor should turn again. At the first time it might be necessary to give a little push by hand. The motor speed increases fast and remains.