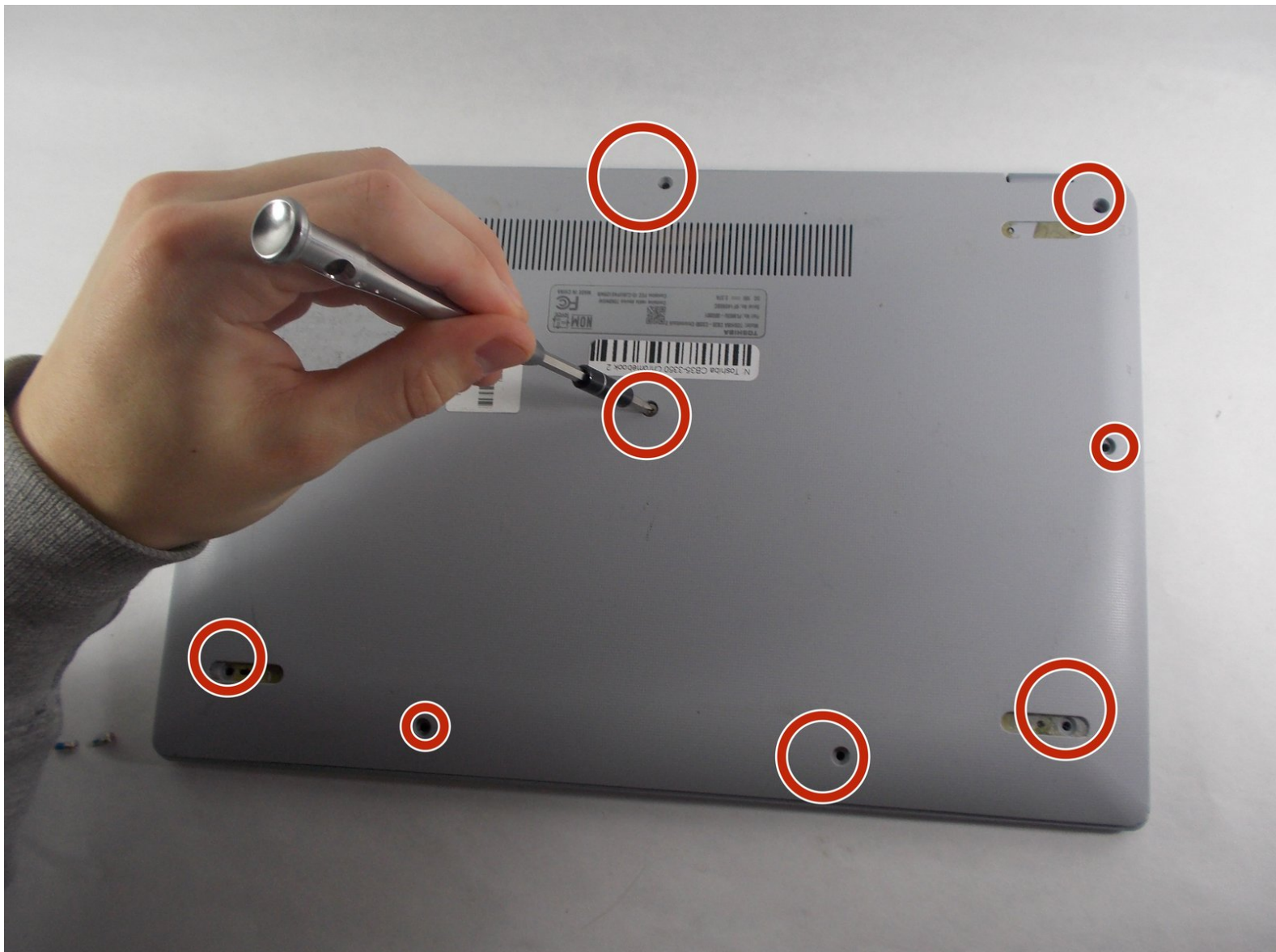




Toshiba CB35-3350 Chromebook 2 USB Board Replacement

Guide for replacing a USB board/Port in a Toshiba CB35-3350 Chromebook 2.

Written By: Kojo Appiagyei



INTRODUCTION

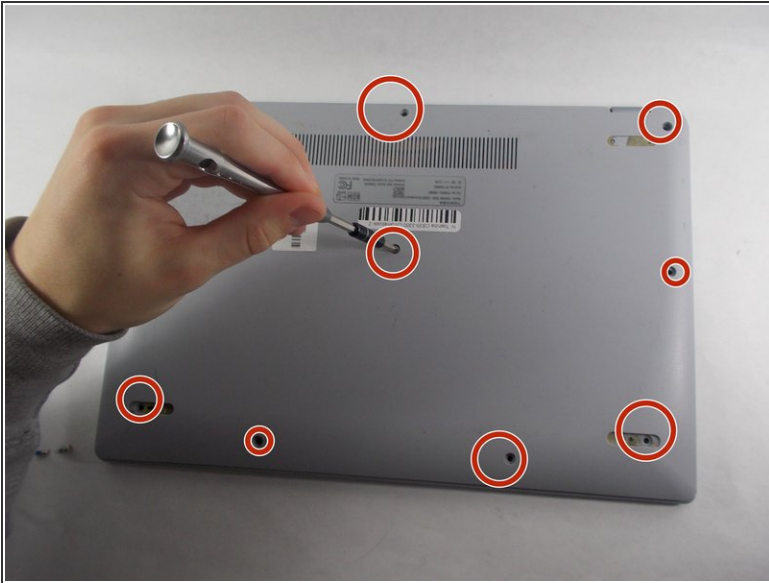
You will use this guide to replace a damaged, broken, or faulty USB board/port in a Toshiba CB35-3550 Chromebook 2.



TOOLS:

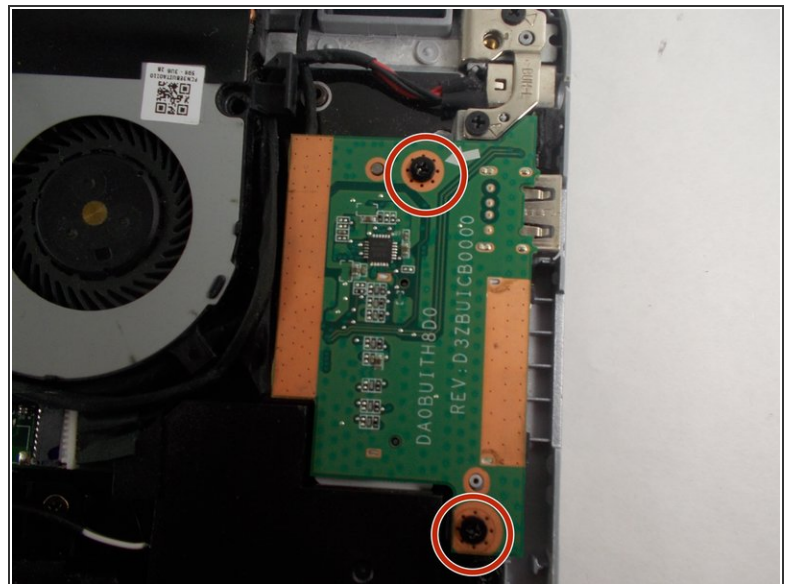
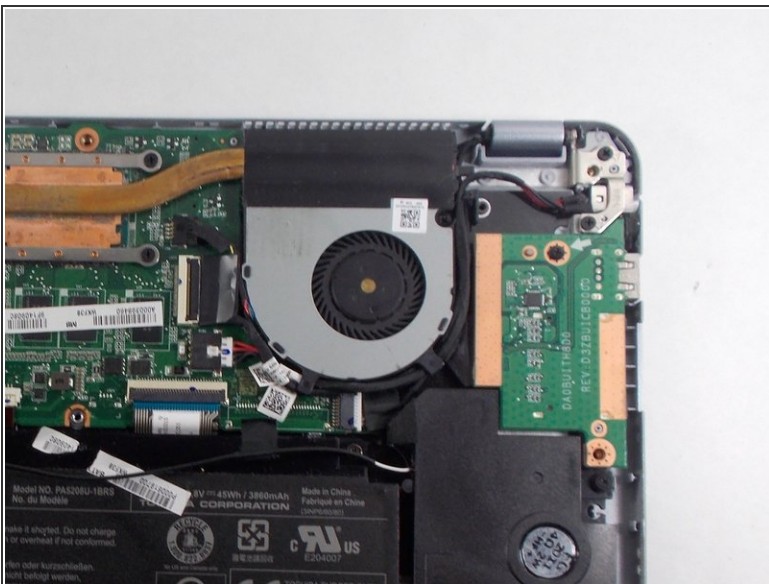
- [Phillips #0 Screwdriver](#) (1)
 - [iFixit Opening Tool](#) (1)
-

Step 1 — USB Board / USB Port



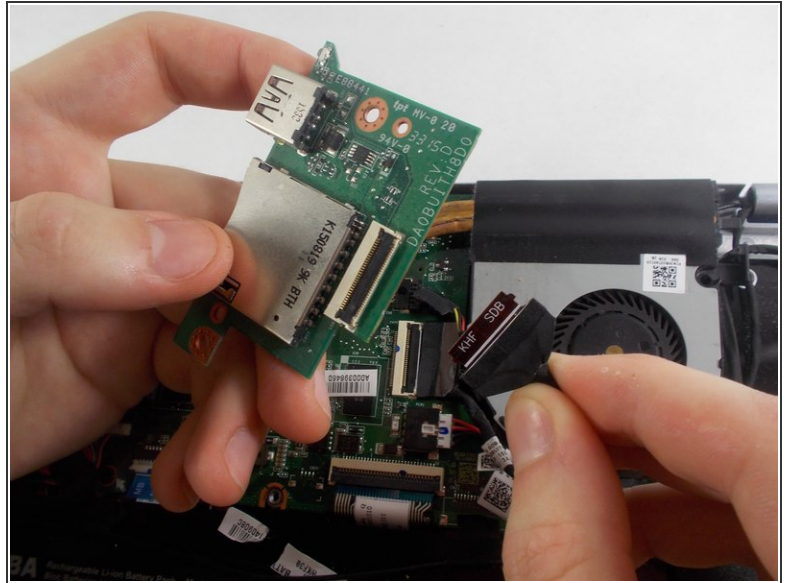
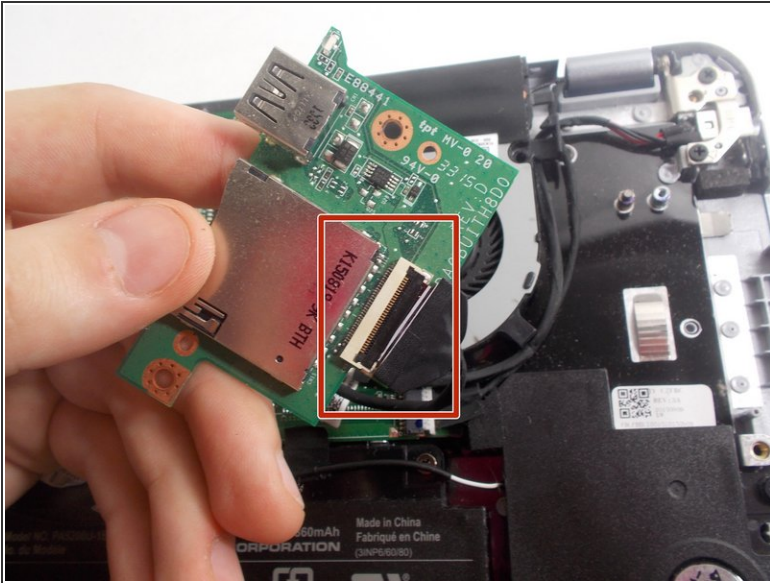
- Remove the Phillips #0 screws from the back of the laptop.
- Use your hands and an iFixit opening tool to remove the back of the laptop.

Step 2



- Remove the screws attached to the USB board.

Step 3



- Remove the cable connecting the USB board to the rest of the laptop.
- Remove the USB board from the laptop.

To reassemble your device, follow these instructions in reverse order.