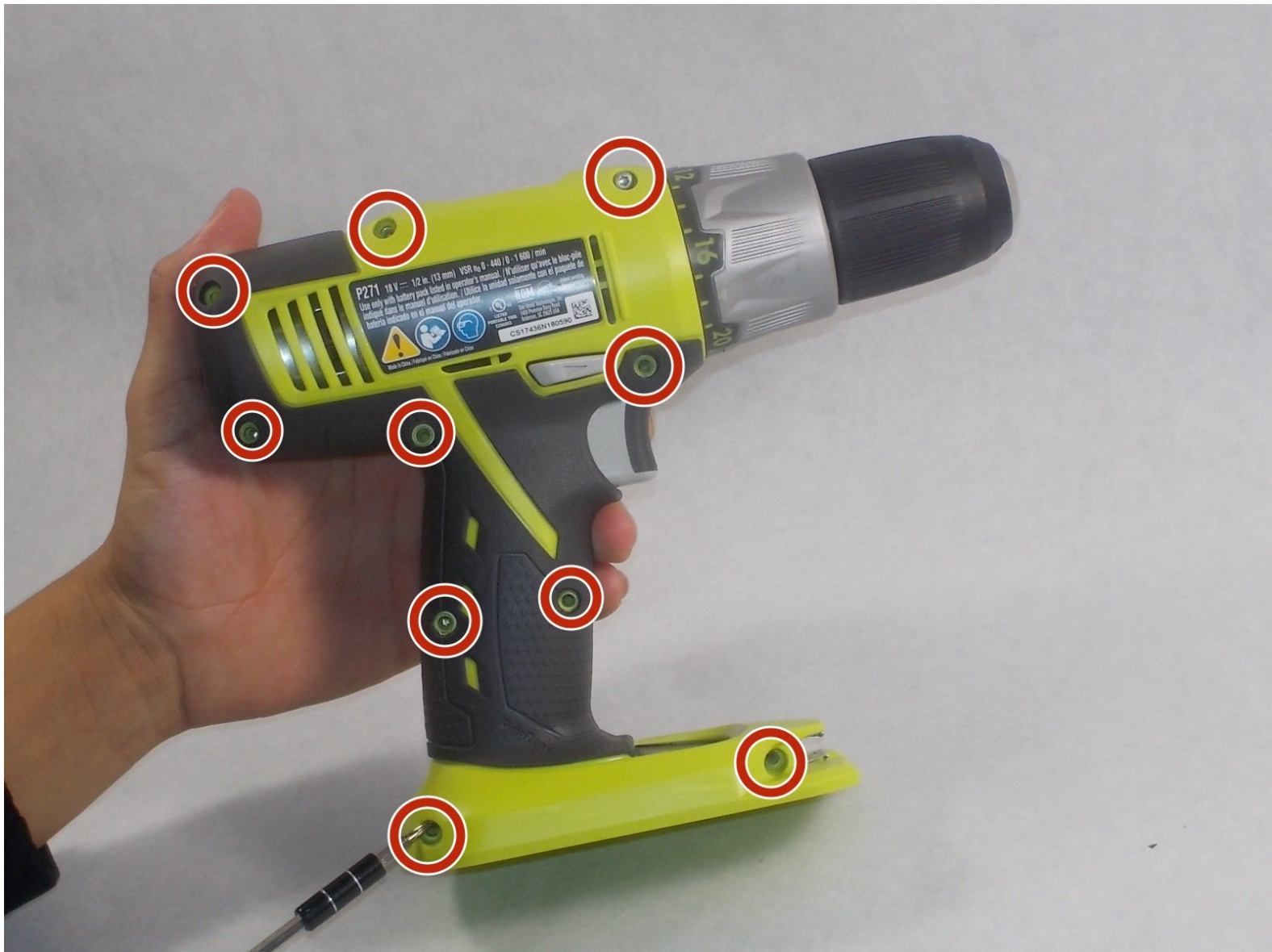




# Ryobi P271 Trigger Replacement

This guide will show you how to replace a Ryobi P271 trigger.

Written By: nathan krehbiel



## INTRODUCTION

This repair is for if your trigger on your drill stops working or has issues cutting in and out. Soldering is required for this repair and it will fix your drill trigger for future use.



### TOOLS:

- [Soldering Iron](#) (1)
- [Essential Electronics Toolkit](#) (1)



### PARTS:

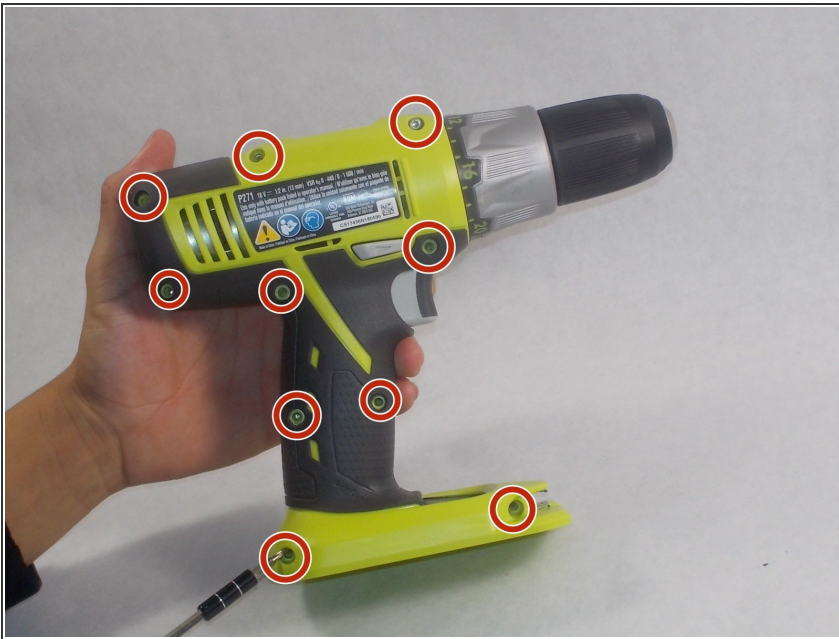
- [New Ryobi P271 Trigger and trigger motor](#) (1)

## Step 1 — Battery



- Detach the battery unit from the drill body by pressing the battery release buttons on both sides of the unit and pulling outwards.

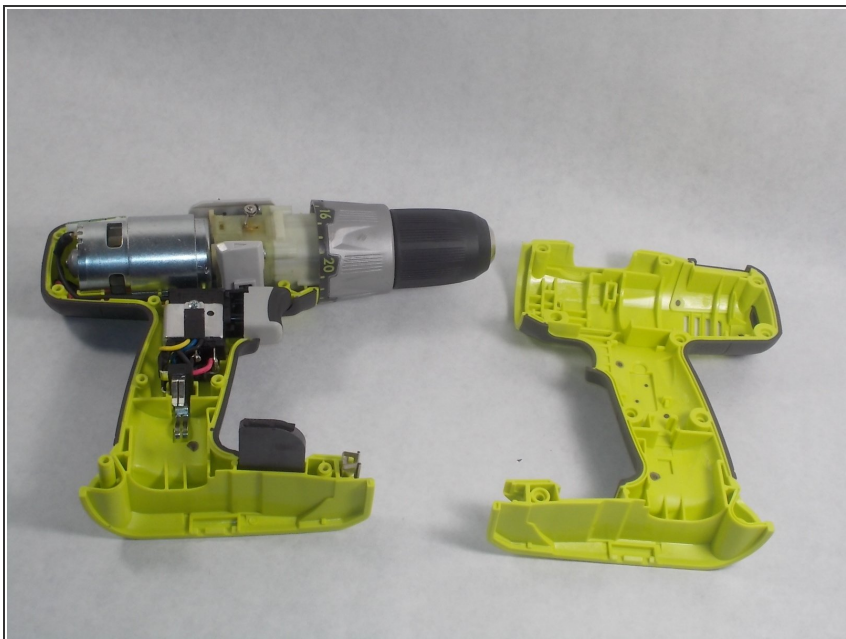
## Step 2 — Trigger



- Remove the screws from the drill's casing to gain access to the interior.

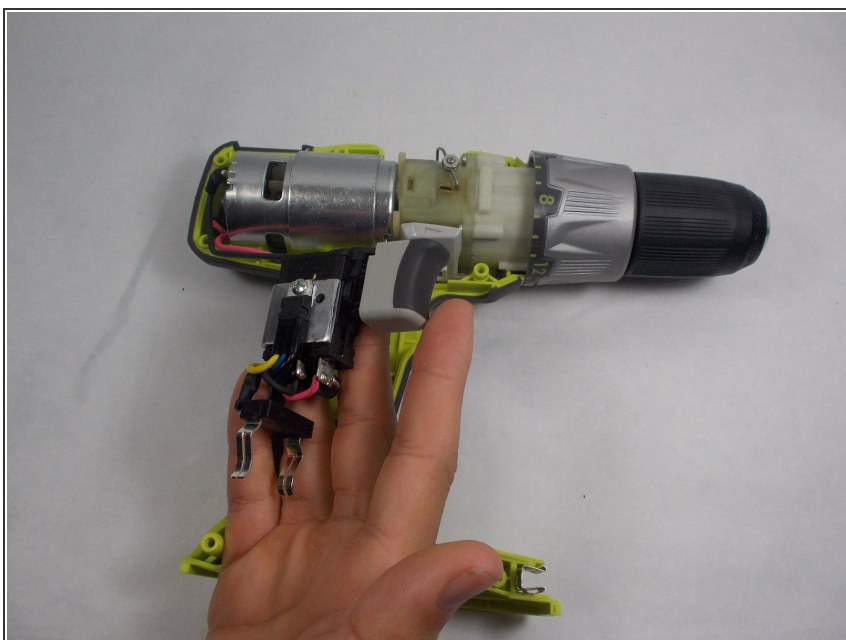


### Step 3



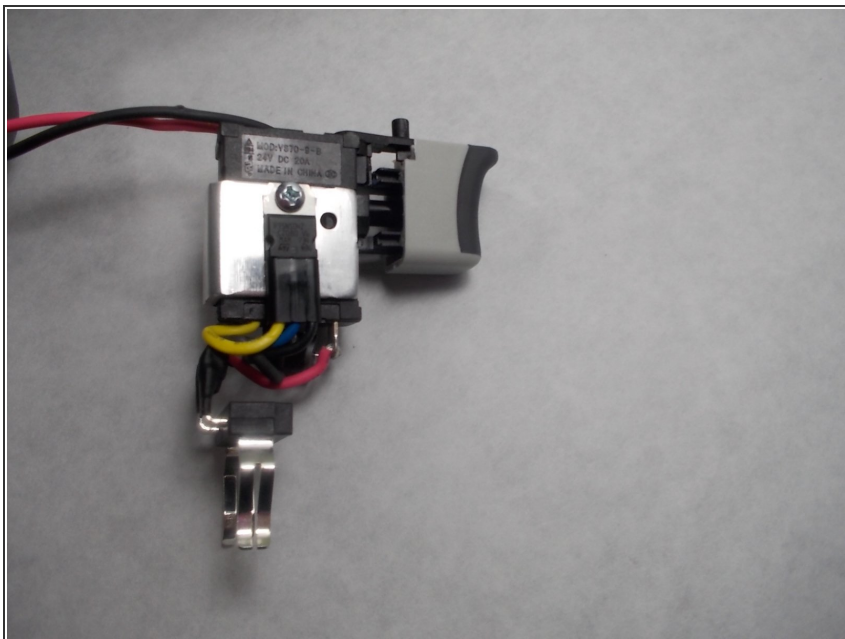
- Lift and remove the casing off of the drill body.

### Step 4



- Carefully lift and remove the battery clip, trigger, motor, and everything connected to the wires and pull straight out of the drill.

## Step 5



- Separate the wiring from the trigger and the motor using a soldering iron and then replace them with a new trigger and motor by soldering the wires back together.
- ⓘ Follow [this guide](#) for soldering tips.

To reassemble your device, follow these instructions in reverse order.