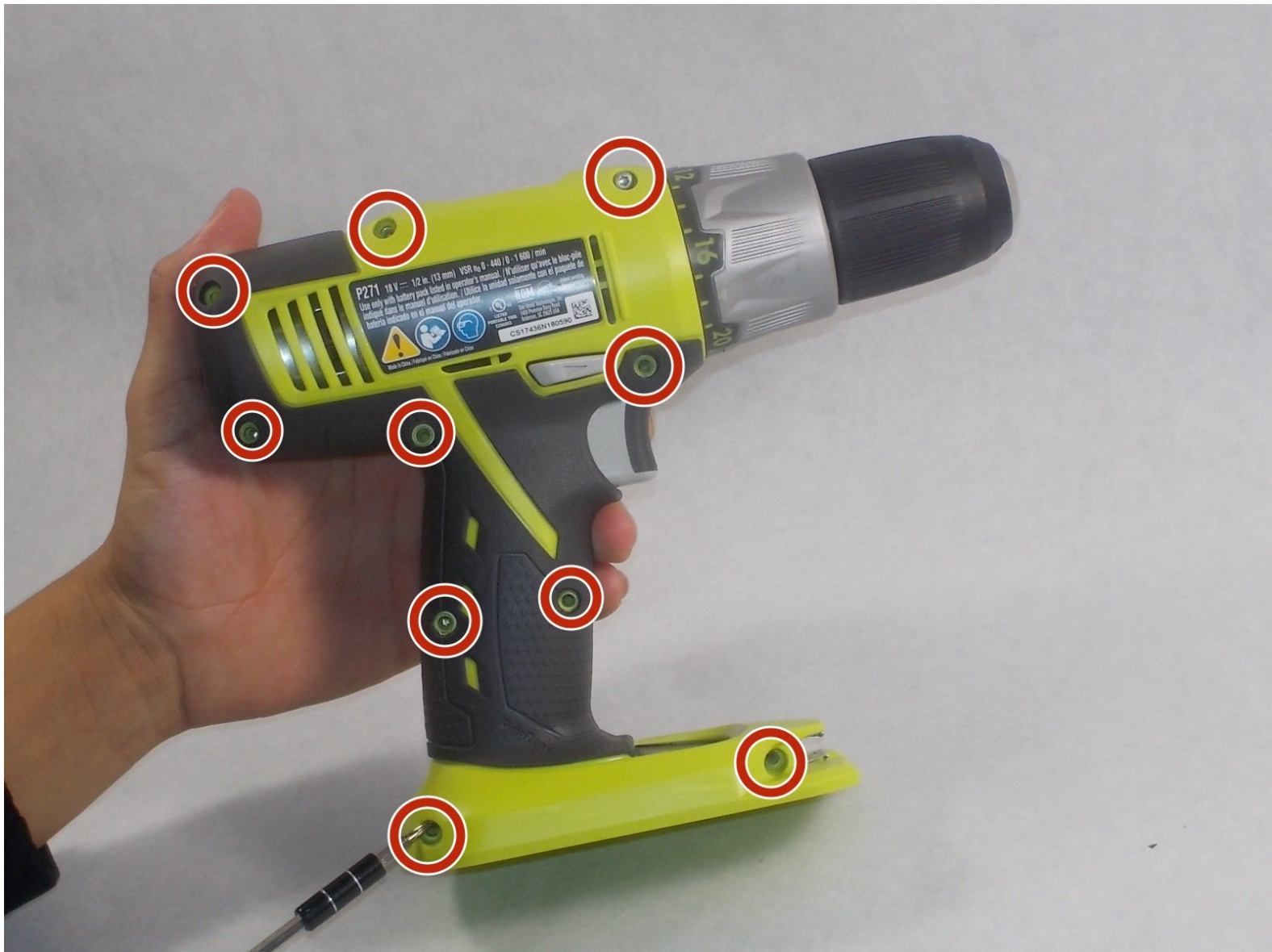




Ryobi P271 Magnet Replacement

This guide shows how to replace the magnet in the Ryobi P271.

Written By: Carissa Keung



INTRODUCTION

This guide shows how to replace the Ryobi P271 magnet.

Here are some causes for a faulty magnet:

Magnet is on the wrong side

If the magnet is on the wrong side it might've been placed incorrectly when the drill was being put together. Try finding different objects that generally stick to magnets and see if they stick or not. If it doesn't work with that side try unscrewing the drill so that you may remove and flip the magnet so that is on the correct side.

Magnet is missing

If the magnet itself is missing it will need to be replaced. Unscrew the screws on the drill to open it up and replace the magnet holder with a new magnet for the drill.



TOOLS:

- [Essential Electronics Toolkit](#) (1)
-

Step 1 — Battery



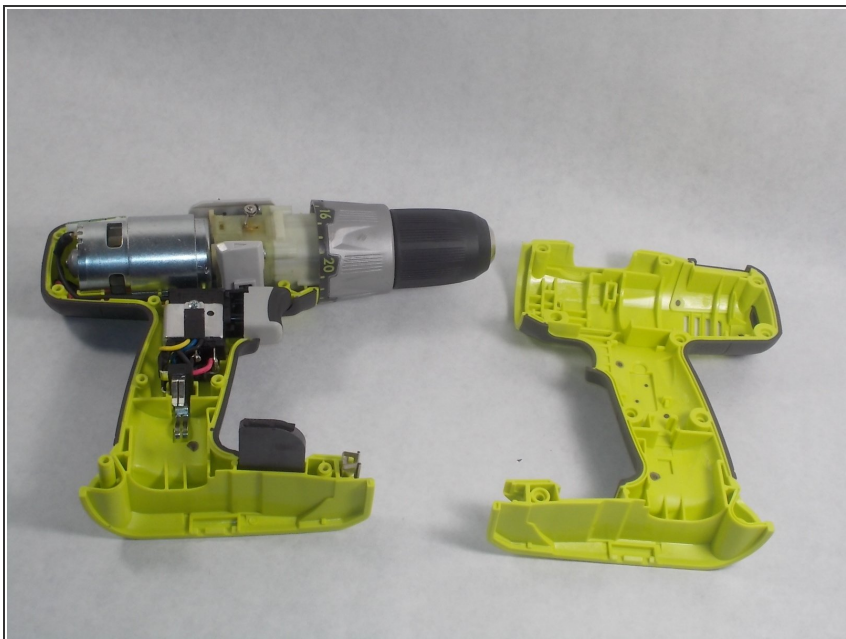
- Detach the battery unit from the drill body by pressing the battery release buttons on both sides of the unit and pulling outwards.

Step 2 — Magnet



- Remove all ten screws from the drill's casing to gain access to the interior.

Step 3



- Using your hands, lift and remove the right cover of the drill body off from the left side and place it down.

Step 4



- Carefully slide the magnet from its holder.

To reassemble your device, follow these instructions in reverse order.