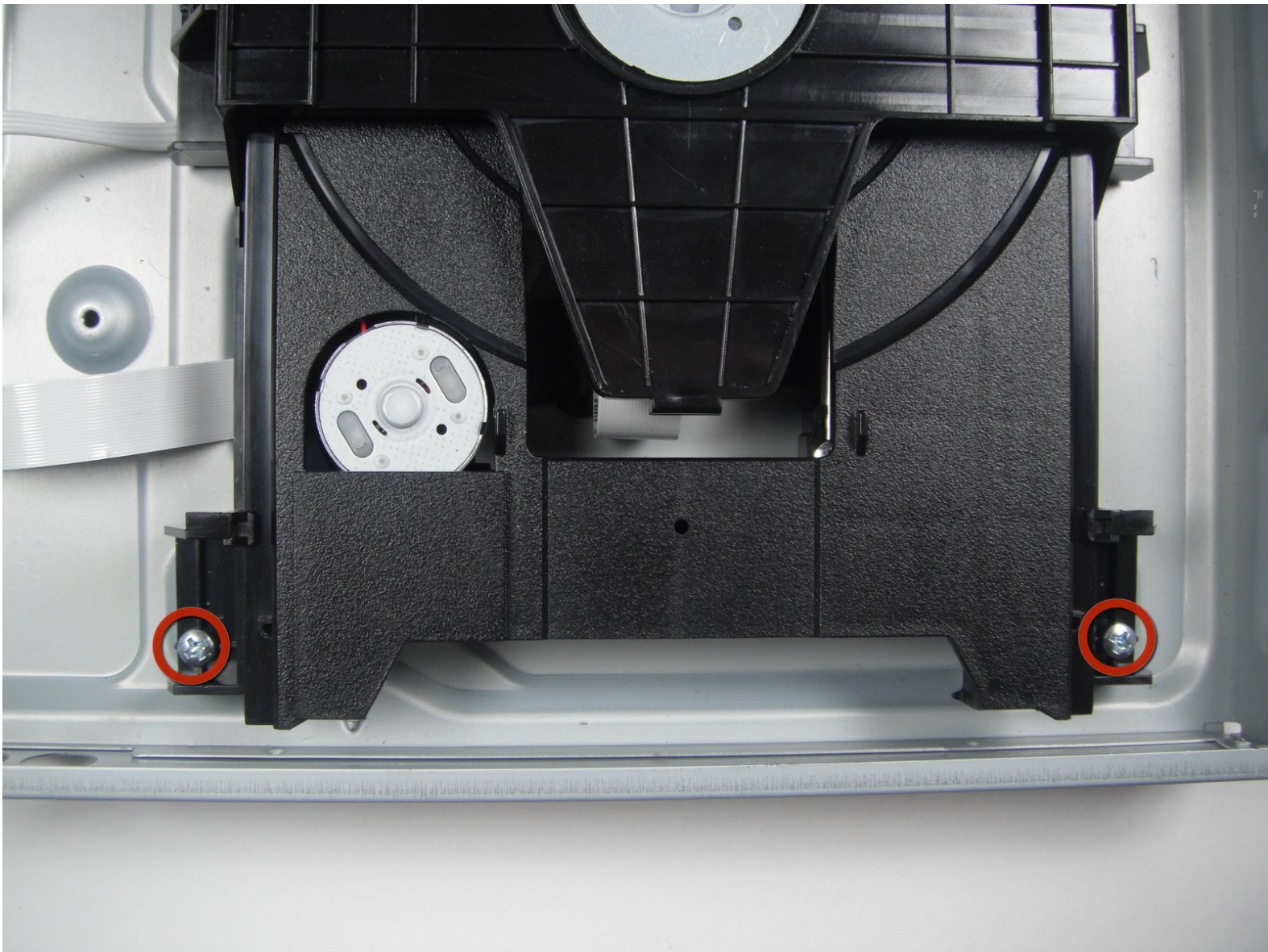




Sony DVP-SR200P DVD Drive Replacement

This guide will show you how to install a new DVD Drive if the current one is malfunctioning.

Written By: Kaitlyn Reilly



INTRODUCTION

By removing the DVD drive you will be able to install a new one. You will also be able to access other components of the device that may need to be installed, including the DVD reader and button circuit board.



TOOLS:

- [Phillips #1 Screwdriver](#) (1)
-

Step 1 — Top Cover



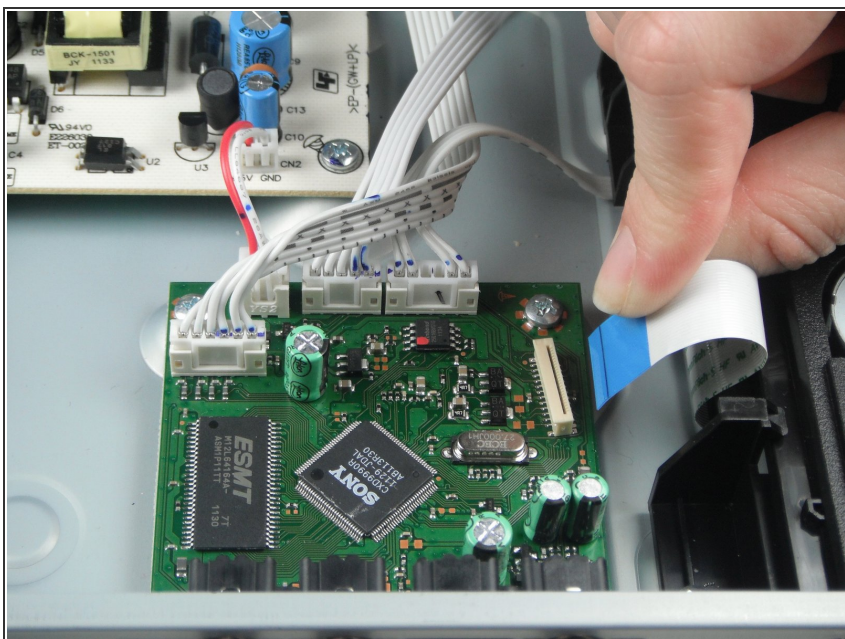
- Remove the five #1 Phillips screws (black, 3/16") attaching the cover to the DVD player.
 - One 3/16" screw on the right side of the DVD player.
 - One 3/16" screw on the left side of the DVD player (directly opposite of other screw).
 - Three 3/16" screws on the back of the DVD player.

Step 2



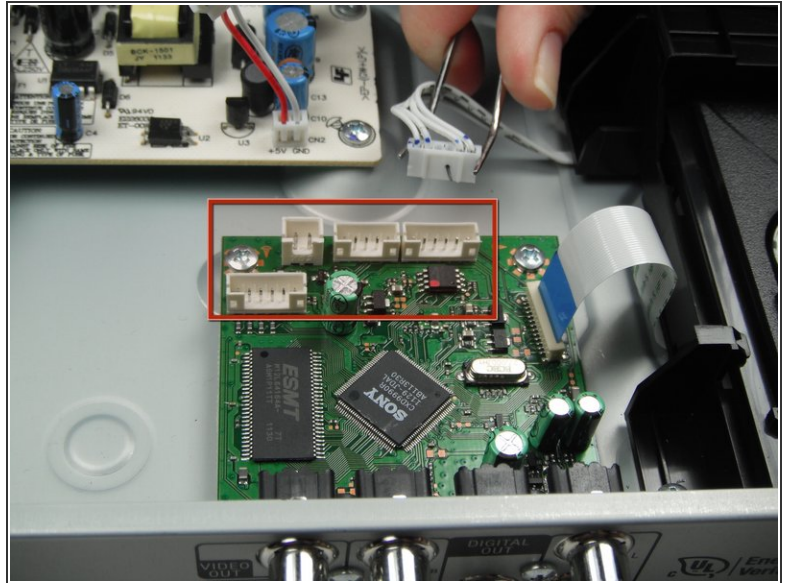
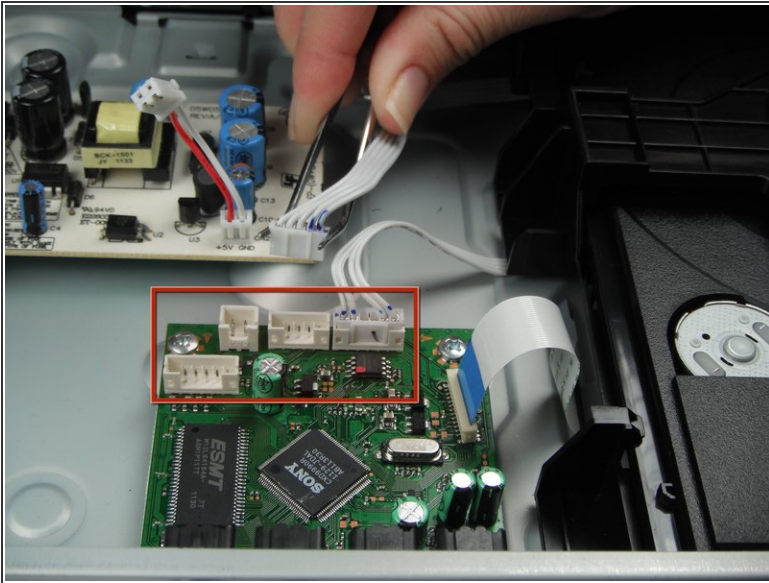
- Slide the cover away from the front of the DVD player until it is off.

Step 3 — Processing Board



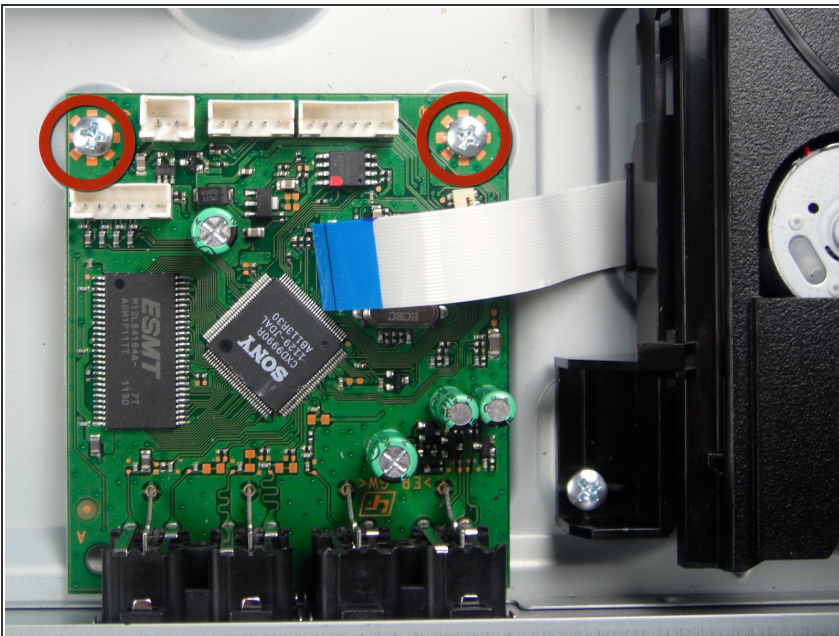
- Remove the blue tape from the processing board by gently pulling upward.

Step 4



- Use the tweezers to remove the four sets of wires connected to the processing board. Start with the cord located in front of the row of three cords.
- ⓘ The wires may be difficult to remove. Wiggling them while lifting them up may help remove them.

Step 5



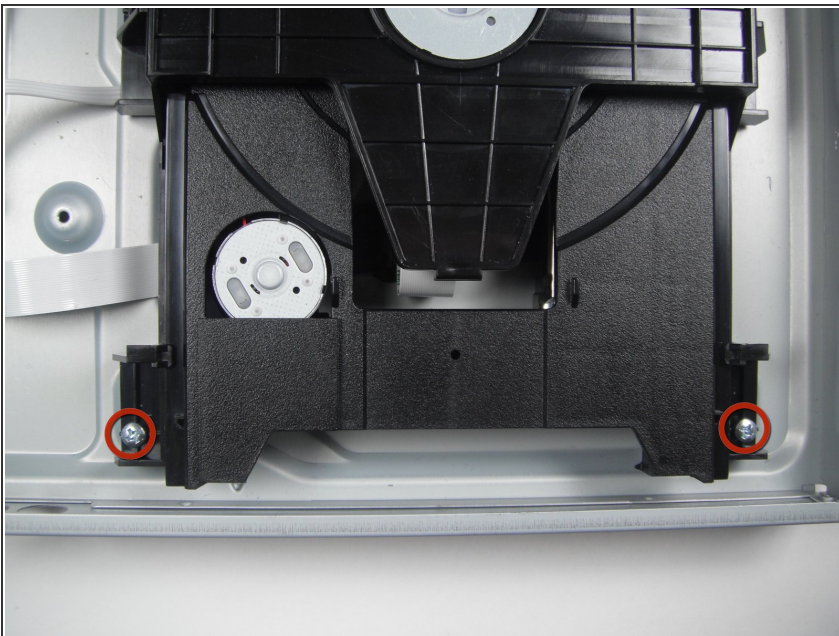
- ⚠ Handle the processing board with care. It is fragile.
- Unscrew the two #1 Phillips screws (silver, 3/16") located on the two edge corners of the processing board.

Step 6



- Orient the DVD player so that you are facing the video and audio jacks.
 - Unscrew the two #1 Phillips screws (silver, 3/16") located on the outside of the DVD player
- i** The processing board is now free to be removed and replaced.

Step 7 — DVD Drive



- Orient the DVD player so the front of the DVD player is opposite of you.
- Remove the two #1 Phillips screws (silver, 3/16") that attach the DVD drive to the bottom of the DVD player.

Step 8



- Remove the DVD drive by pulling it backward and upward while ensuring that it is free of any braces.

To reassemble your device, follow these instructions in reverse order.