



# Lenovo Essential G560 Optical Drive Replacement

This is a guide to upgrade or replace the optical drive, aslo known as the cd or dvd drive.

Written By: Dennis Wong



---

## INTRODUCTION

Follow this guide to remove the optical drive from the computer.



### TOOLS:

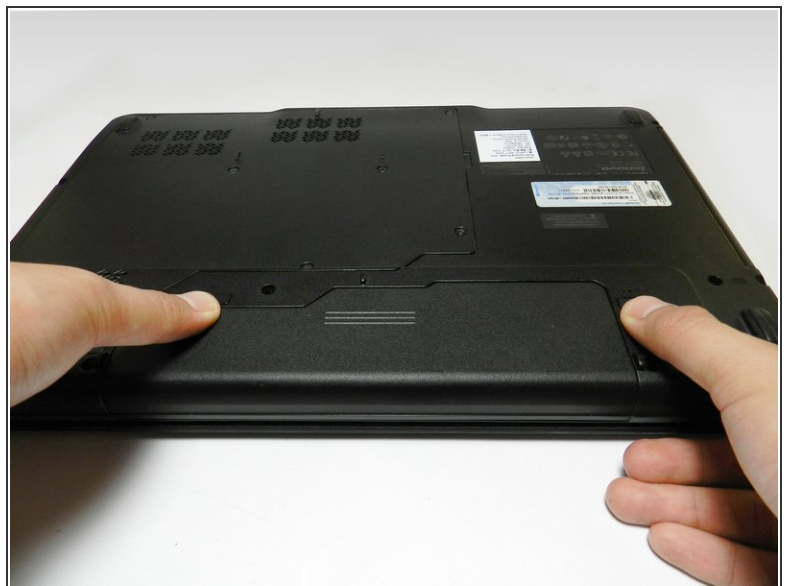
- [Phillips #1 Screwdriver](#) (1)
-

## Step 1 — Battery



- Turn off the computer.
- Disconnect the charging cable from the computer.
- ⚠ Failure to unplug the cable could result in electric shock.
- Flip the computer upside down.

## Step 2



- Locate the two switches that lock the battery. Push the right-hand switch outward into the "unlocked" position.

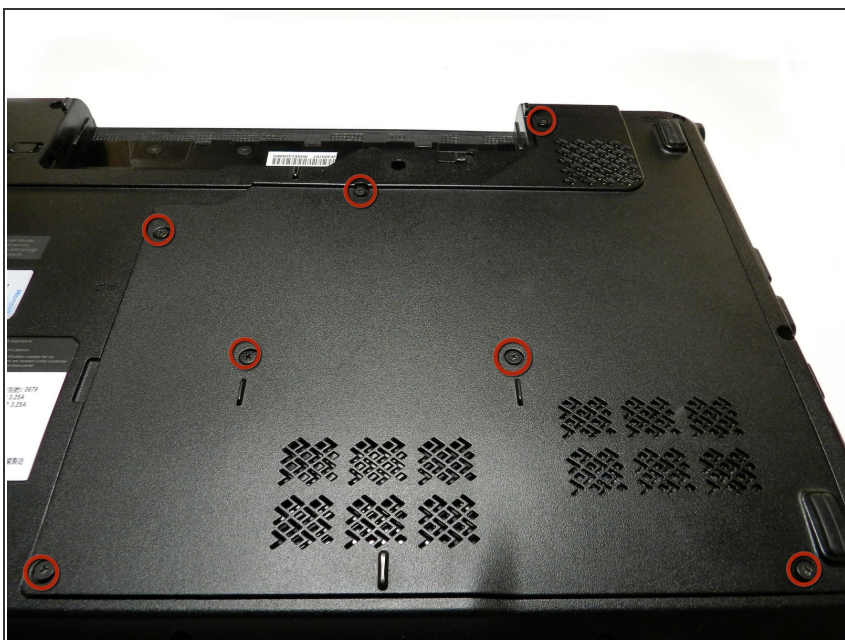


### Step 3



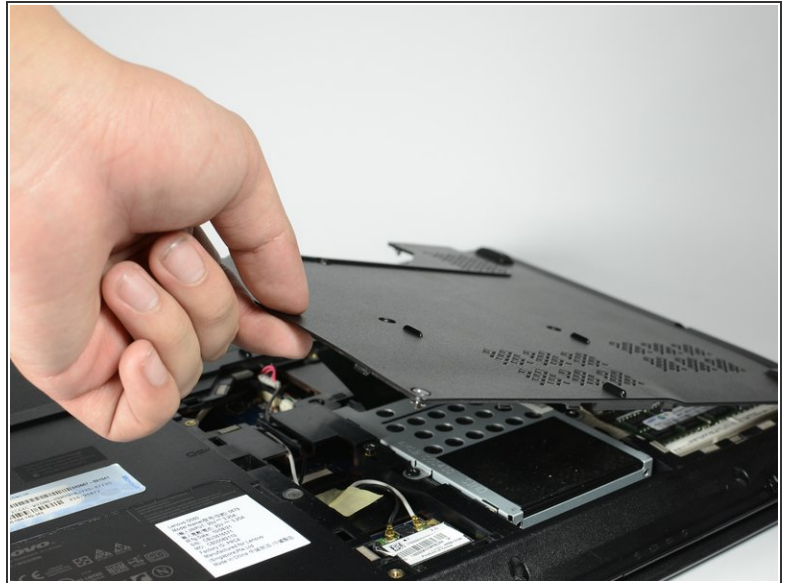
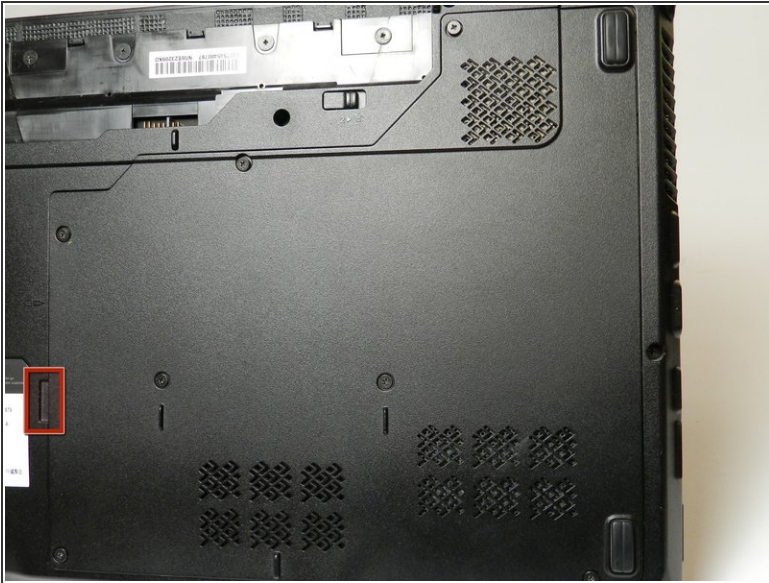
- Push and hold the left hand switch outward in the "unlocked" position, then gently slide the battery away from the computer.

### Step 4 — Back Panel



- Remove the seven 5.3 mm Phillips #1 screws holding the back panel in place.

## Step 5



- Pull the back panel off using the highlighted tab. The tab should give you enough leverage to pull the panel off smoothly.

⚠ If the back panel is difficult to remove and feels like it is going to break, DO NOT force it. Check to confirm that all the screws are removed before attempting again.

## Step 6



- The computer should be open with many of the internal components shown. You can now access the hard drive, the RAM, and the keyboard.

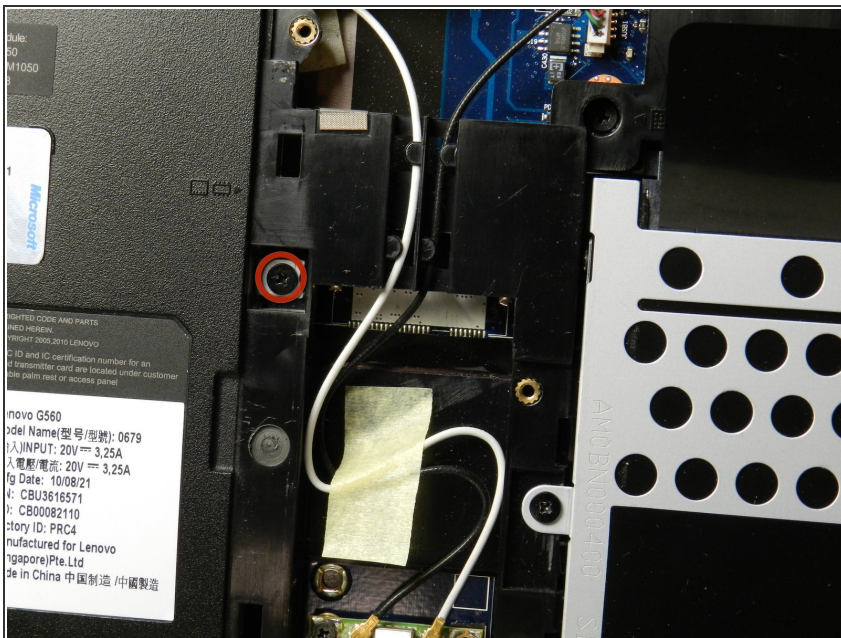


## Step 7 — Optical Drive



- Locate the Optical Drive 4.7 mm Philips #1 screw, which secures the Optical Drive into the body of the laptop.

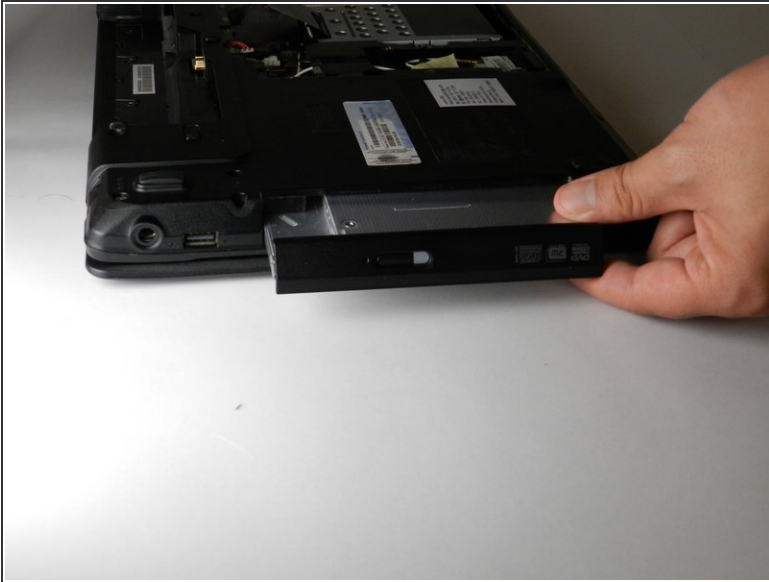
## Step 8



- Using the Philips #1 Screwdriver, remove the Optical Drive 4.7 mm Philips #1 screw. Once you remove the screw, locate the metal tab beneath the screw and push it outwards.
- ⓘ It may be useful to use the spudger to push the metal tab, as there is not enough space for your finger or plastic opening tool.

⚠ Be firm, yet gentle to avoid damaging the electronic connections.

## Step 9



- Slide the Optical Drive smoothly out of its slot.

To reassemble your device, follow these instructions in reverse order.