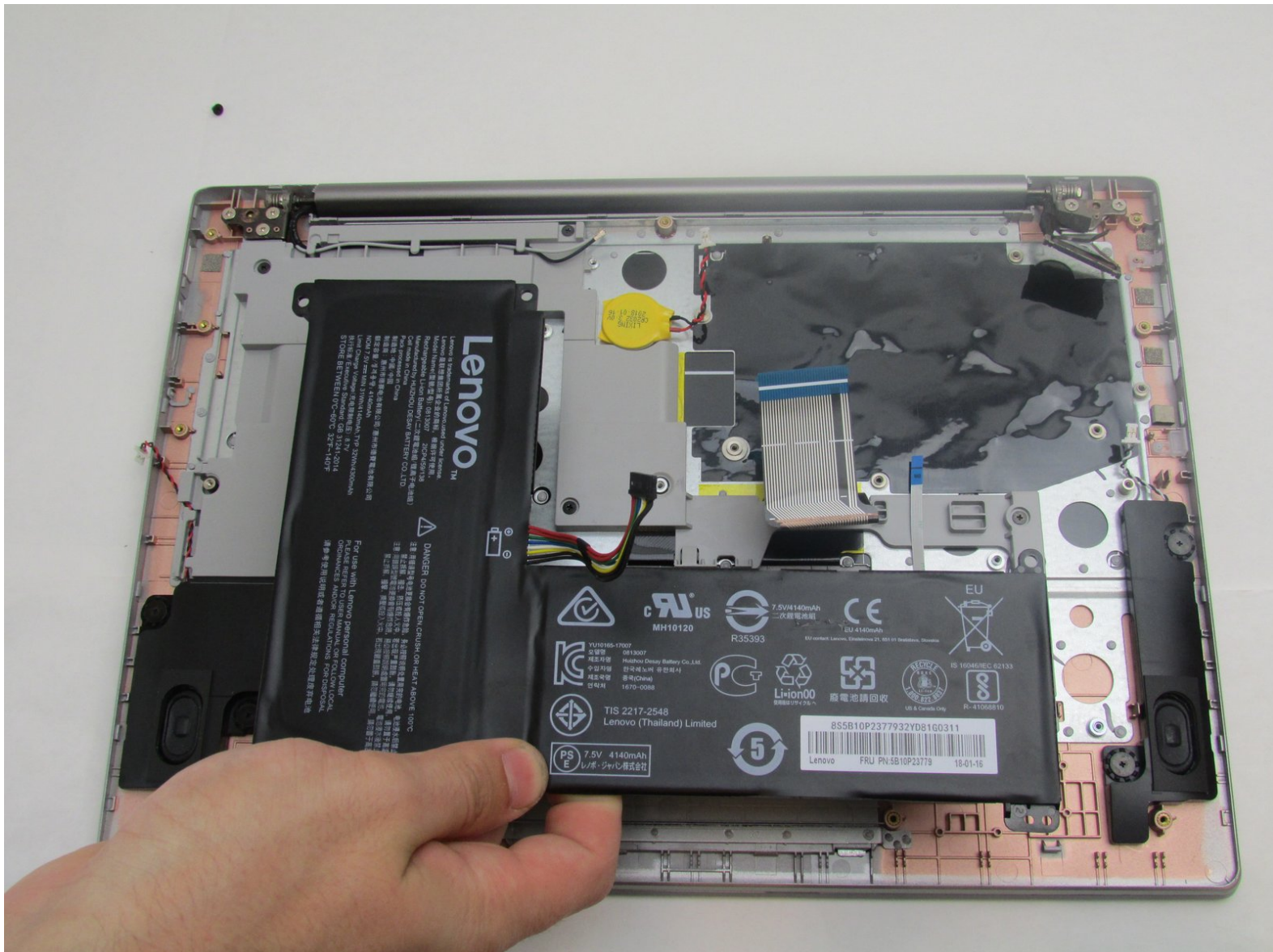




Lenovo IdeaPad 120s-14IAP Battery Replacement

How to replace a Lenovo IdeaPad 120s-14IAP battery.

Written By: Kyle P Sumpter



INTRODUCTION

This guide will tell you how to replace your Lenovo 120s-14IAP battery. The battery is an easy component to replace that will give your laptop a long life. Be sure to be gentle with the connectors as they can easily break. Ensure the battery you are installing to replace the old one is not damaged.



TOOLS:

- [Jimmy](#) (1)
- [iFixit Opening Tools](#) (1)
- [Phillips #0 Screwdriver](#) (1)
- [T5 Torx Screwdriver](#) (1)



PARTS:

- [Lenovo IdeaPad 120S Replacement Battery](#) (1)

Step 1 — Back Cover



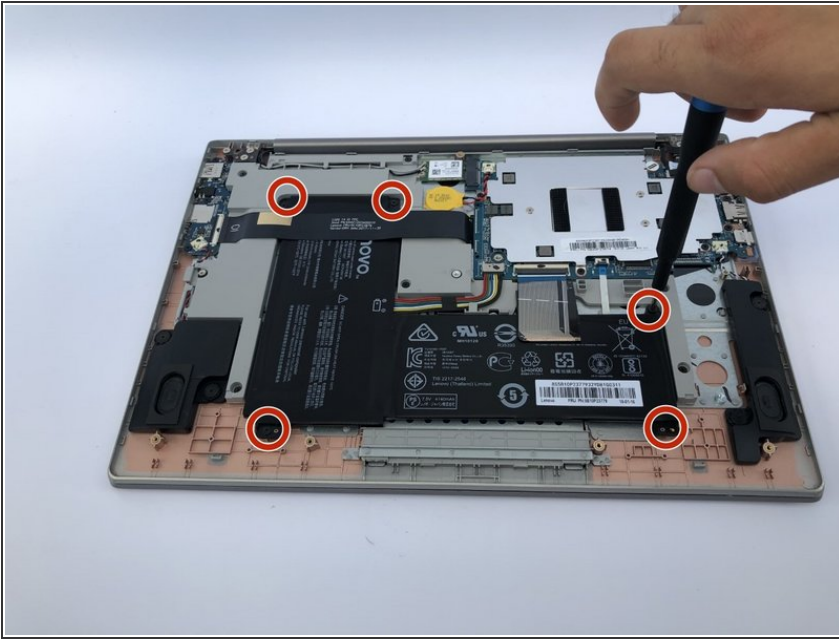
- ❗ Be sure to power off and unplug your device before you begin your repair.
- Orient the laptop so the top is laying flat on your work surface.
- Remove ten 1.5mm Torx T5 screws from the back of the laptop.

Step 2



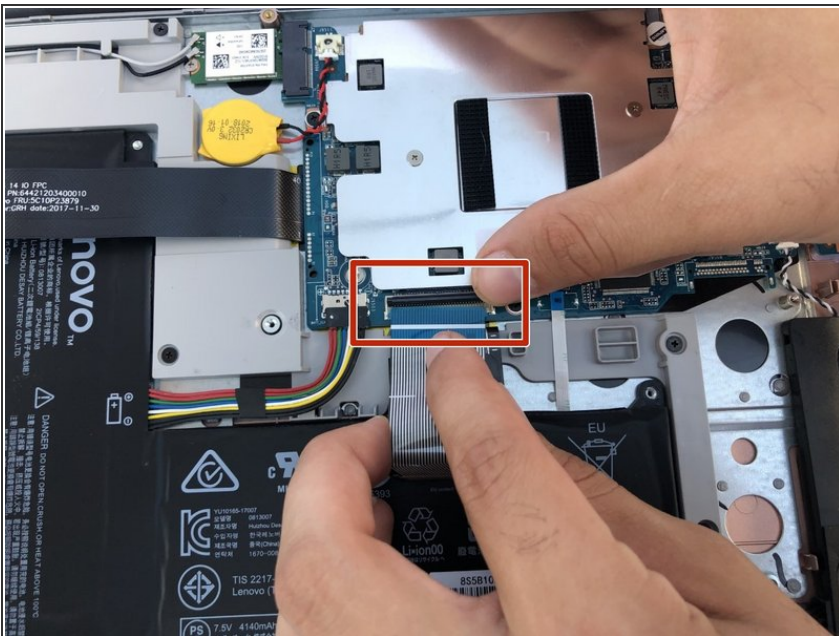
- Insert the plastic opening tool or a Jimmy along the edge of the back cover and gently pry.
- Run the tool all the way around the edge of the back cover and remove the back cover once it is no longer secure.
- Remove the back cover.

Step 3 — Battery



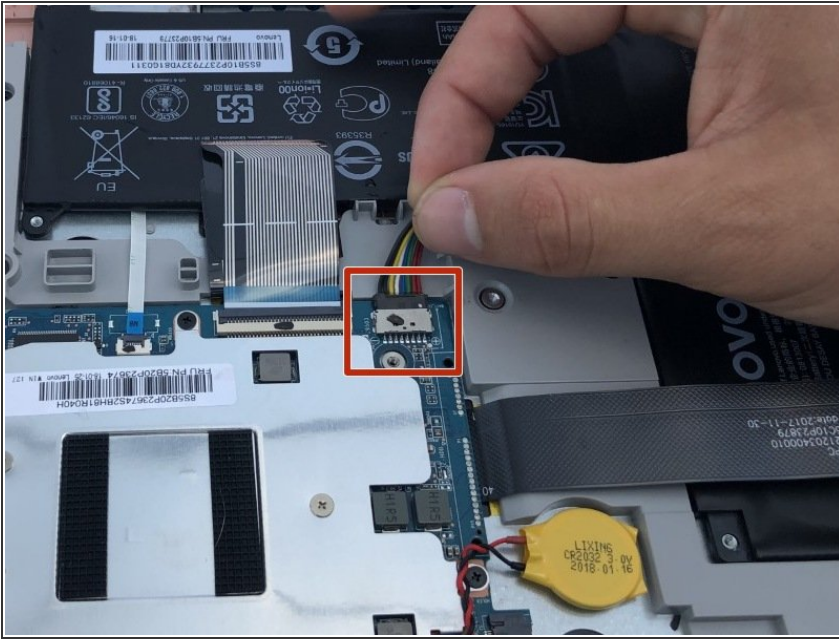
- Remove five 1.5mm Phillips screws from the battery edges.

Step 4



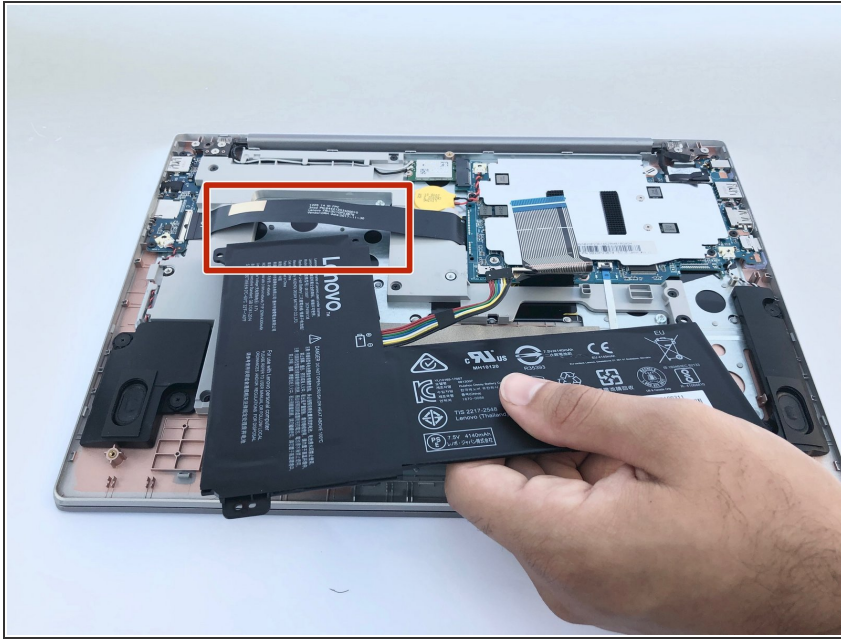
- Use your fingers or a spudger to unlock the wide ribbon cable's ZIF connector.
- i To unlock a [ZIF connector](#), flip up the small, hinged locking flap.
- Gently pull the connector from the battery side until it is fully detached from the daughterboard.

Step 5



- Gently pull the power harness away from the daughterboard until the connector is detached.
- ⓘ Pull parallel to the board, not straight up.

Step 6



- With the laptop oriented so that the long edge faces you and the battery is closest to you, carefully remove the battery by lifting on the longitudinal edge.
- Pull the battery directly towards you and out from under the forward retaining strap.

To reassemble your device, follow these instructions in reverse order.

Take your e-waste to an [R2 or e-Stewards certified recycler](#).

Repair didn't go as planned? Try some [basic troubleshooting](#), or ask our [Answers community](#) for help.