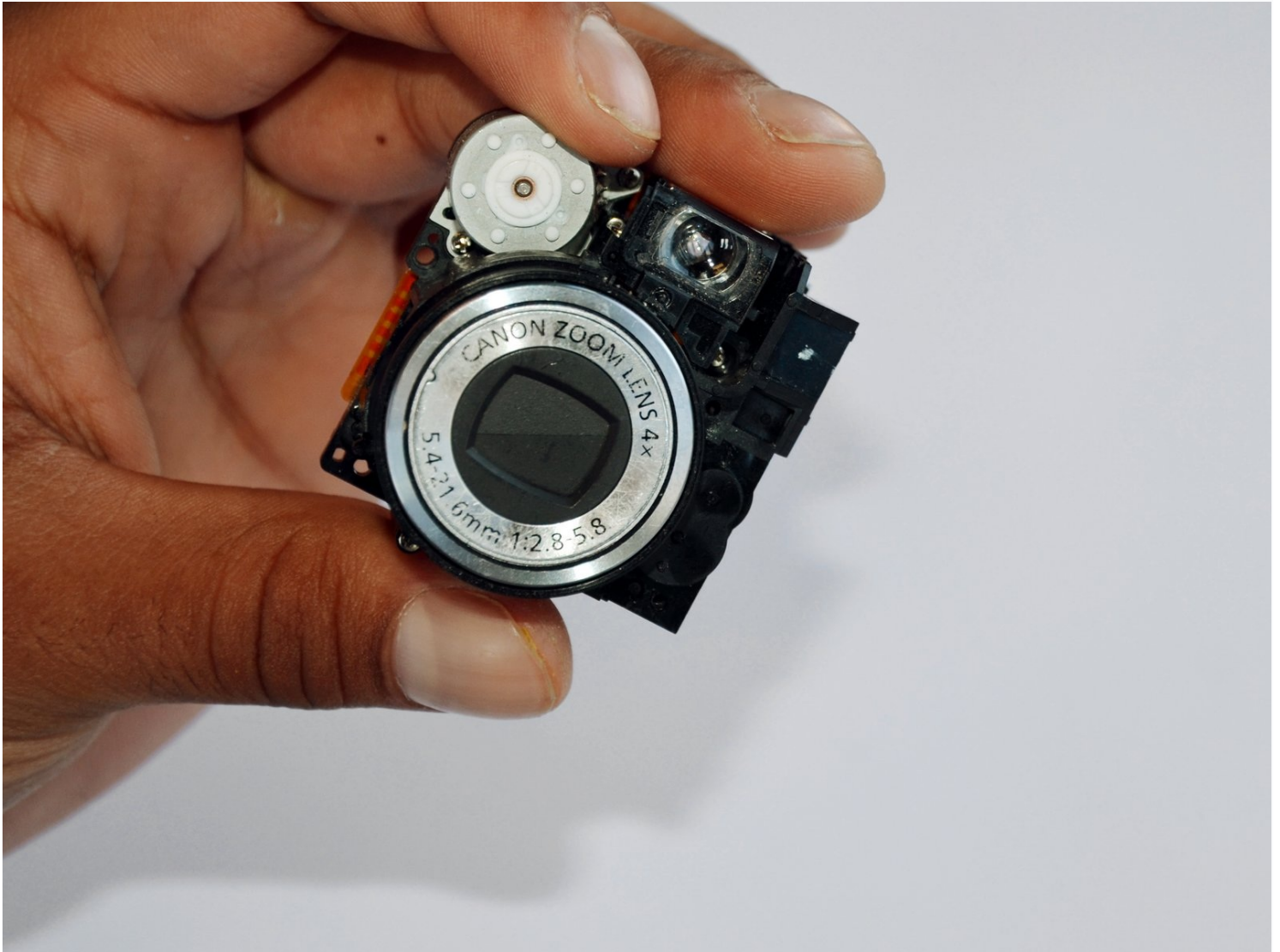




Canon PowerShot A460 Front Lens Replacement

This guide will involve complete disassembly of...

Written By: Tanner Coleman



INTRODUCTION

This guide will involve complete disassembly of the camera.

TOOLS:

Phillips #00 Screwdriver (1)

Spudger (1)

Step 1 — Battery



- Slide the switch on the battery cover labeled "CARD/BATT. OPEN." to the right.
- While still holding the switch, pull the cover down, allowing it to release and open.

Step 2



- Tilt the camera slightly to allow the batteries to fall out.

Step 3



- Press on and release the memory card to eject it.

Step 4 — Front Casing



- Unscrew the 5mm Phillips #00 screw from the bottom of the camera.
- ☑ Make sure to keep the different size screws organized to make reassembling the camera simpler.

Step 5



- Unscrew the three 2mm Phillips #00 screws that are located on the bottom of the camera.

Step 6



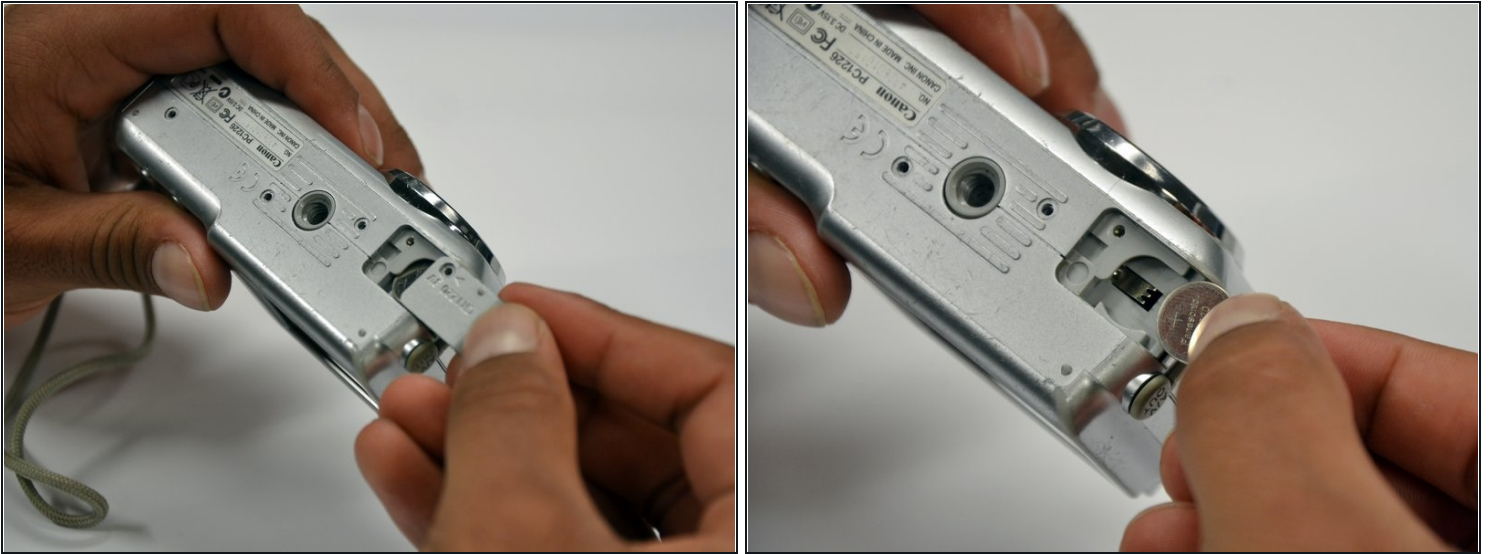
- Remove the 4mm Phillips #00 screw that is located on the left side of the camera, if the display screen is facing you.

Step 7



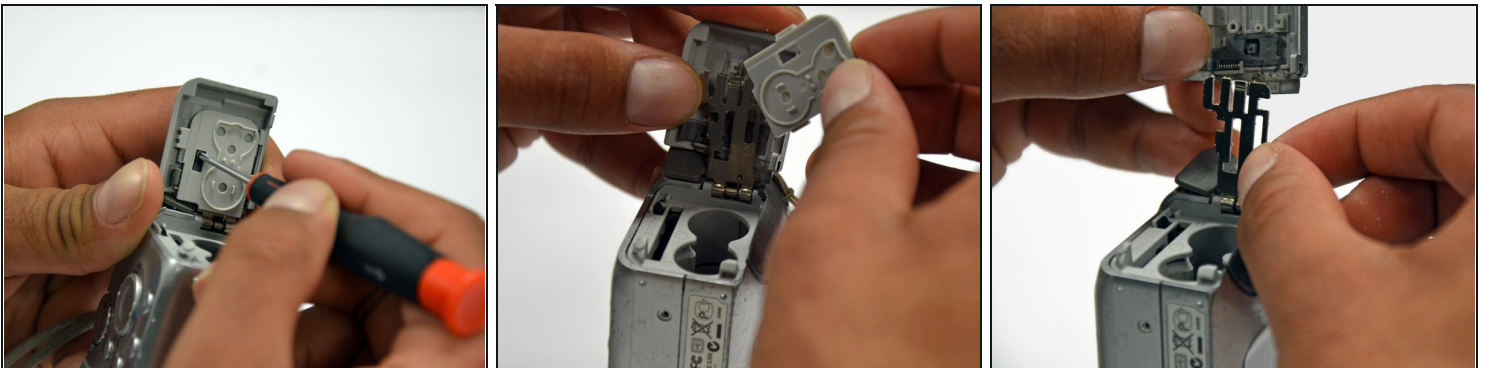
- Take out the 4mm Phillips #00 screw under the rubber flap on the right end of the camera.

Step 8



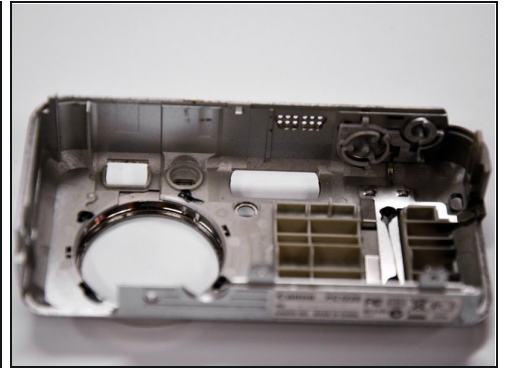
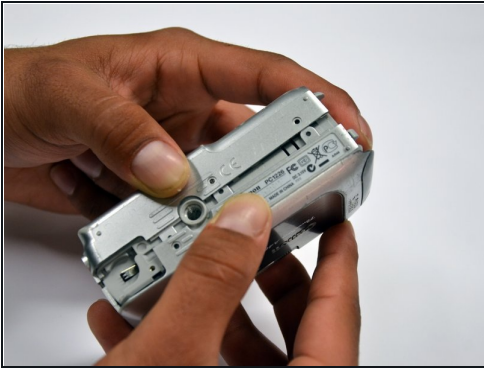
- Remove the second battery cover on the bottom of camera.
- Take the silver battery out of the camera.

Step 9



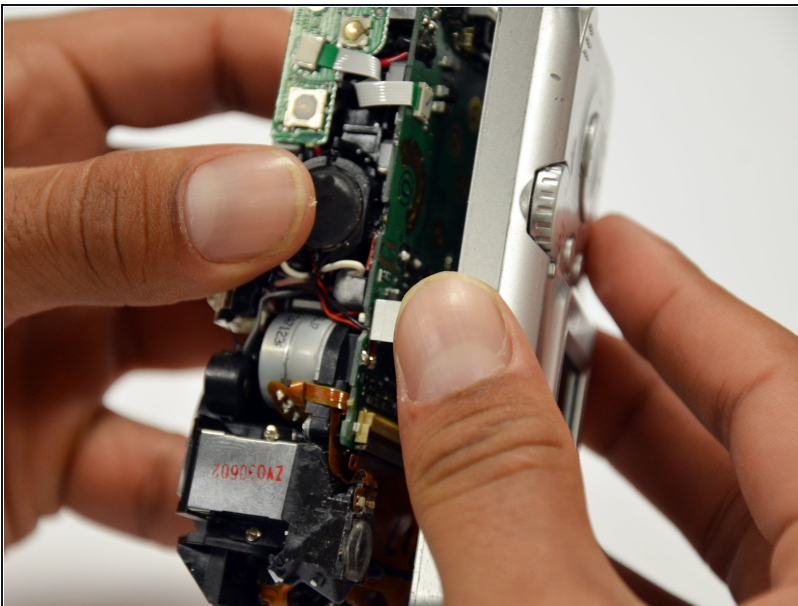
- Remove the 4mm Phillips #00 screw on the inside of the flap that hides the battery and memory card slots.
- Remove the light grey, plastic piece.
- Remove the plastic portion of the battery flap cover. The metal piece will remain attached.

Step 10



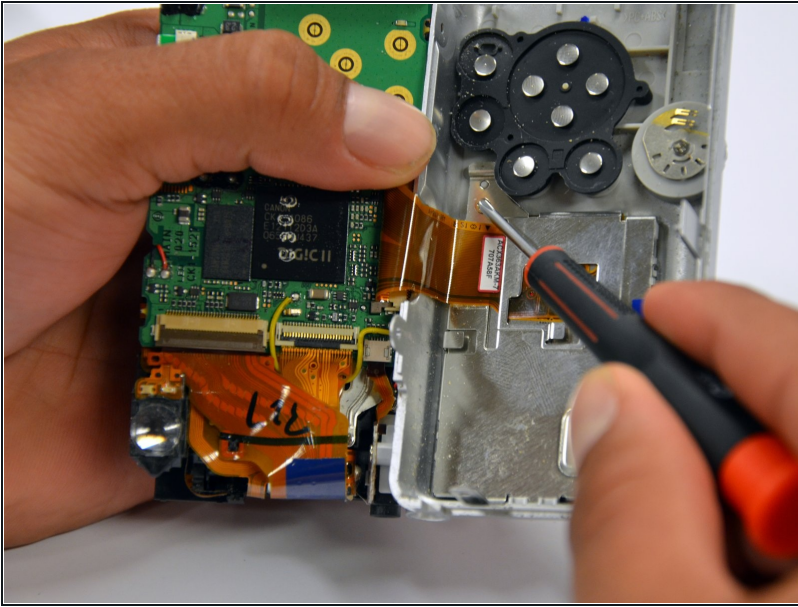
- Slightly pull on each side of the camera. It should loosen up and come apart.
- If it does not pull apart right away, use a little more force.
- Do not give up!

Step 11 — Back Casing



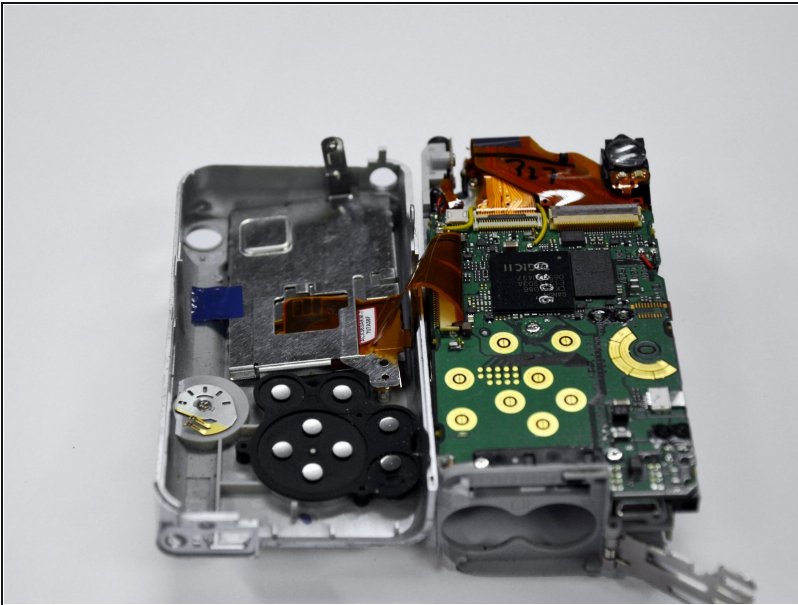
- Remove the back case of the camera by pulling from the top.
- ⚠ Be careful when pulling off the case. There is a delicate gold ribbon connecting the bottom of the camera to the back case.

Step 12 — LCD Screen



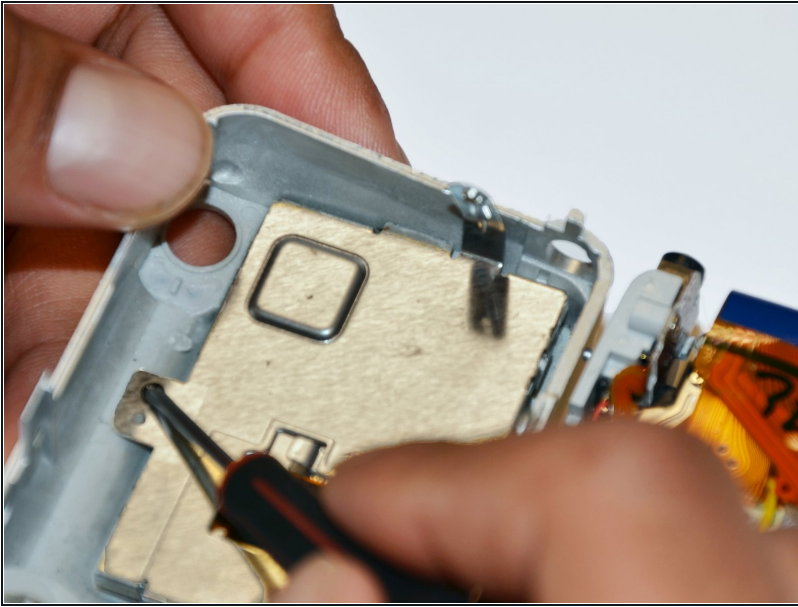
- Remove the 4mm Phillips #00 screw from above the ribbon.

Step 13



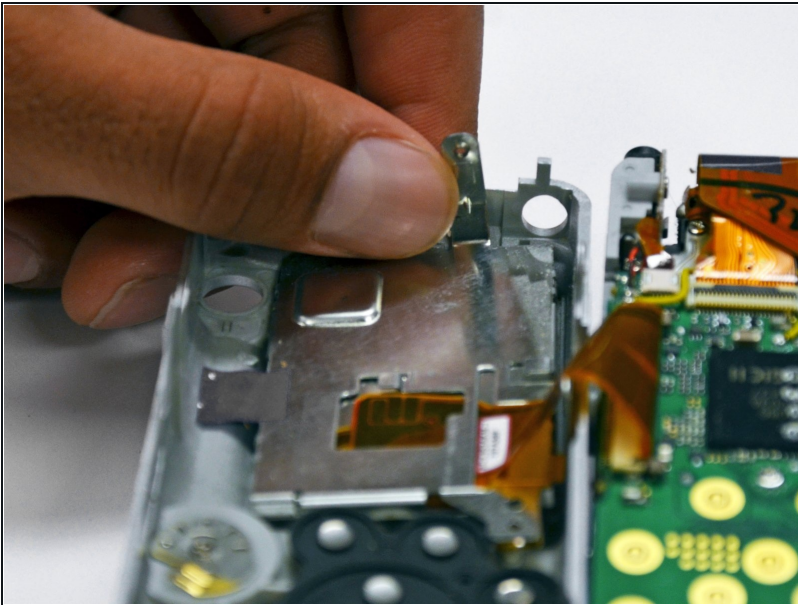
- Gently peel off the blue tape on the top of the LCD screen.

Step 14



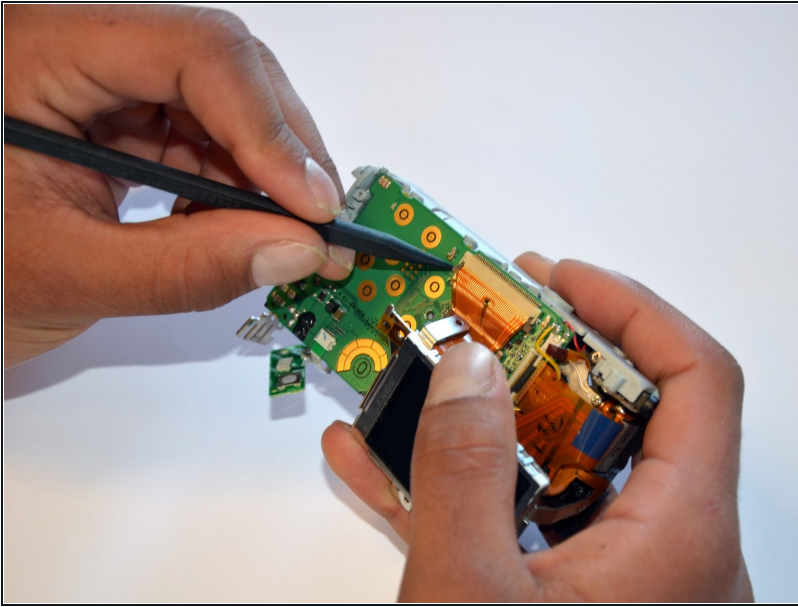
- Remove the 4mm Phillips #00 screw previously concealed by the blue tape.

Step 15



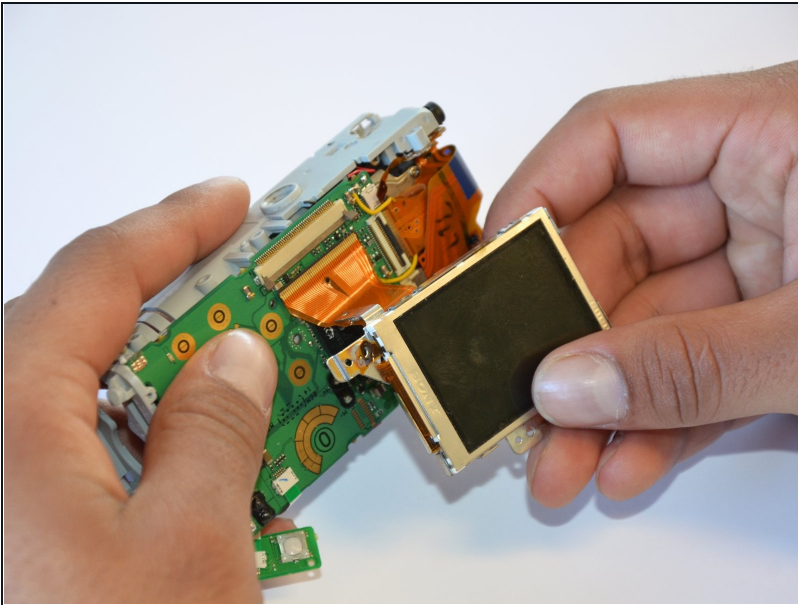
- Gently lift the LCD screen off of the front casing by pulling up a tab on the side of the camera.

Step 16



- Using a spudger, lift the grey tabs to allow the ribbon to slide out.

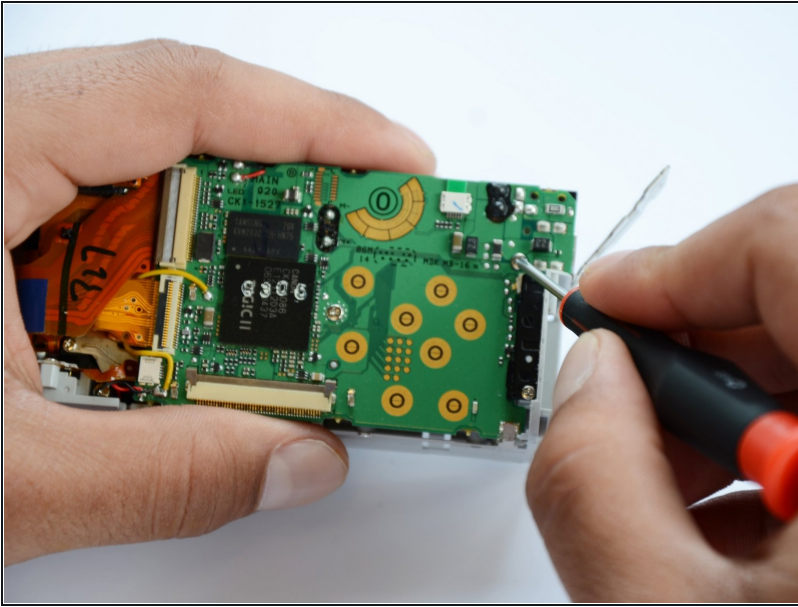
Step 17



- Since the tabs have been lifted, the ribbon should now slide out easily.

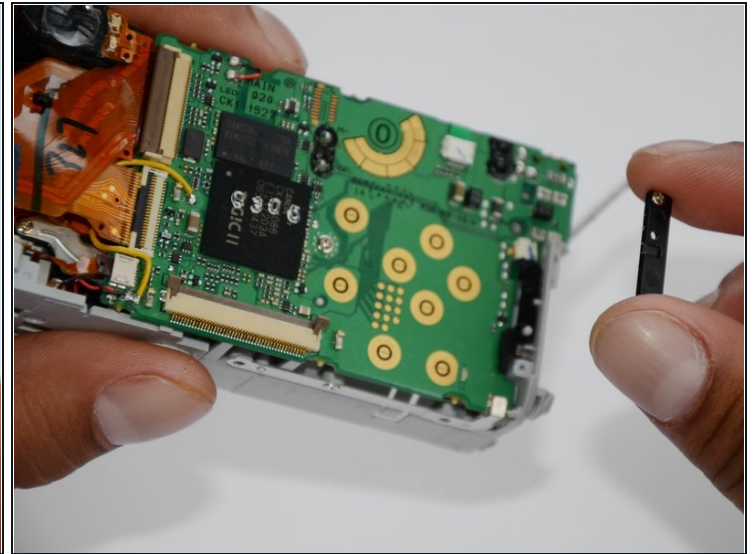
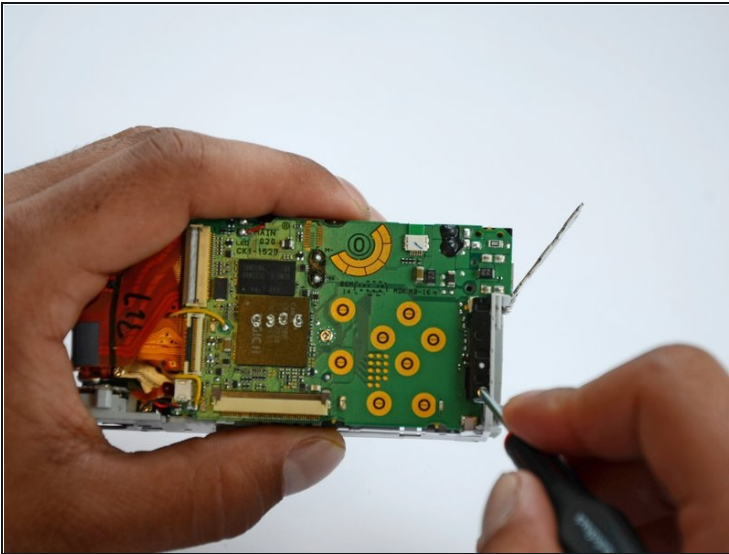
⚠ Be careful not to distort the ribbon in any way.

Step 18 — Motherboard



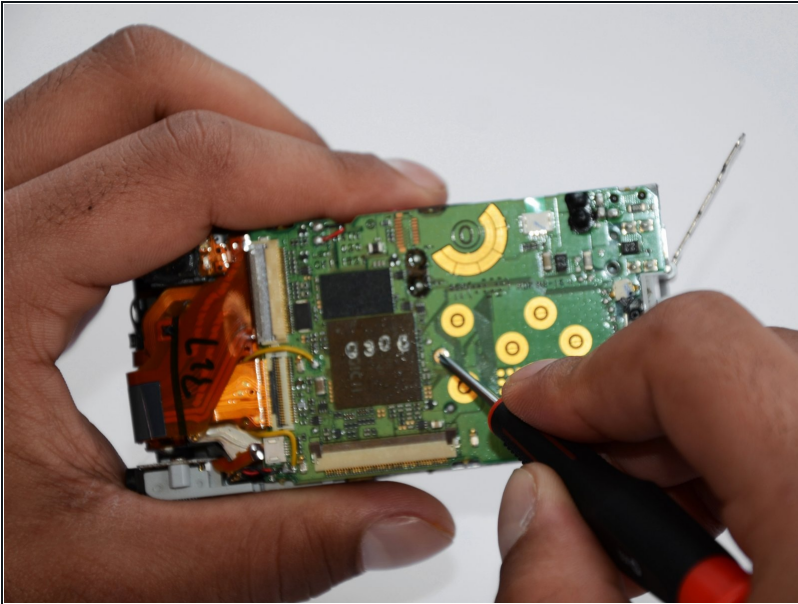
- Remove the 5mm Phillips #00 screw located above the small black piece on the right side of the motherboard.

Step 19



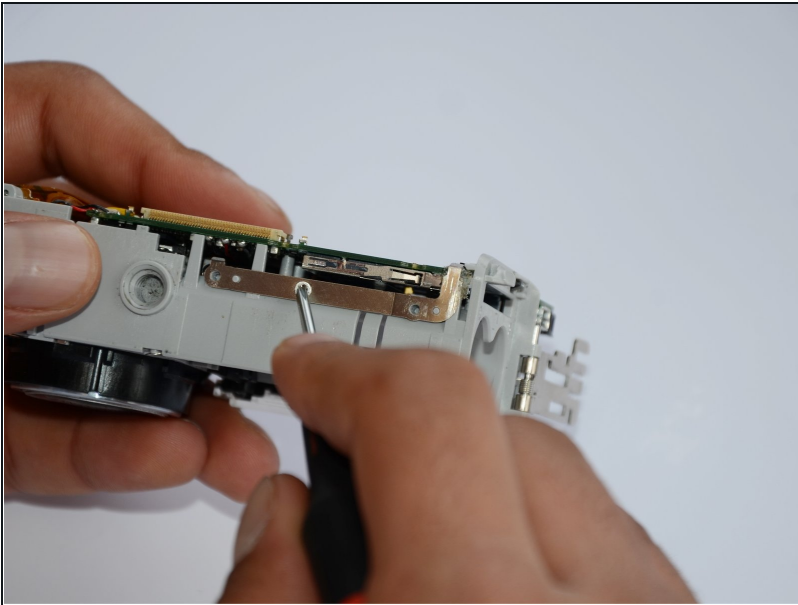
- Remove the 4mm Phillips #00 screw at the bottom of the black piece.
- Detach the black piece that the screws previously held in place.

Step 20



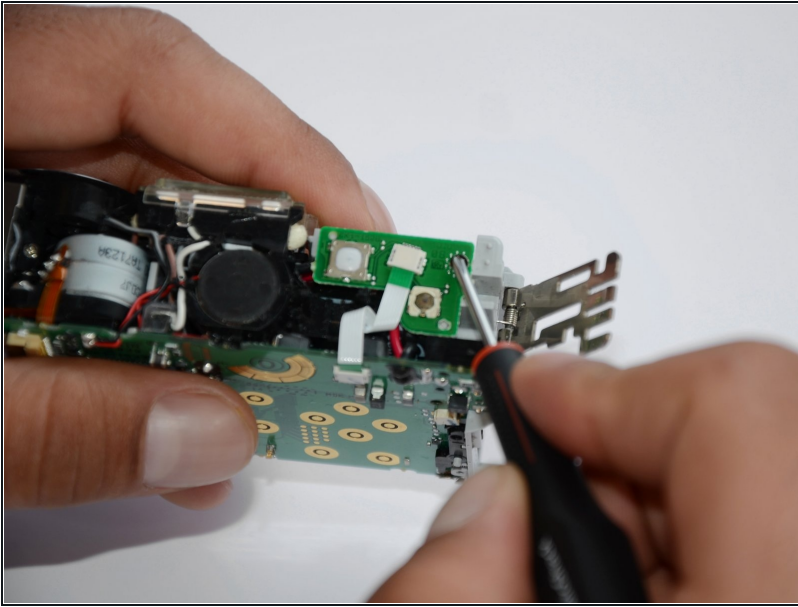
- Remove the 5mm Phillips #00 screw in the middle of the motherboard.

Step 21



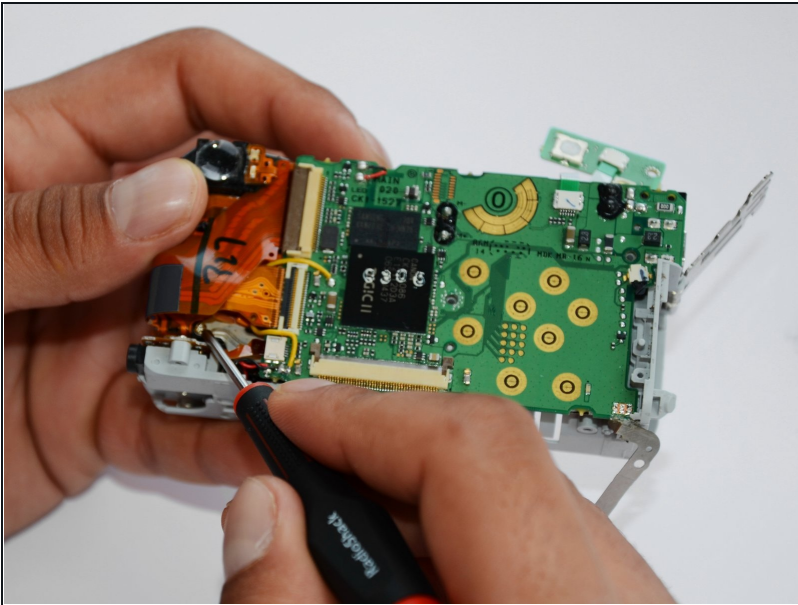
- Remove the 5mm Phillips #00 screw that holds the metal piece to the bottom of the camera .

Step 22



- Remove the 5mm Phillips #00 screw that is located on the top of camera.

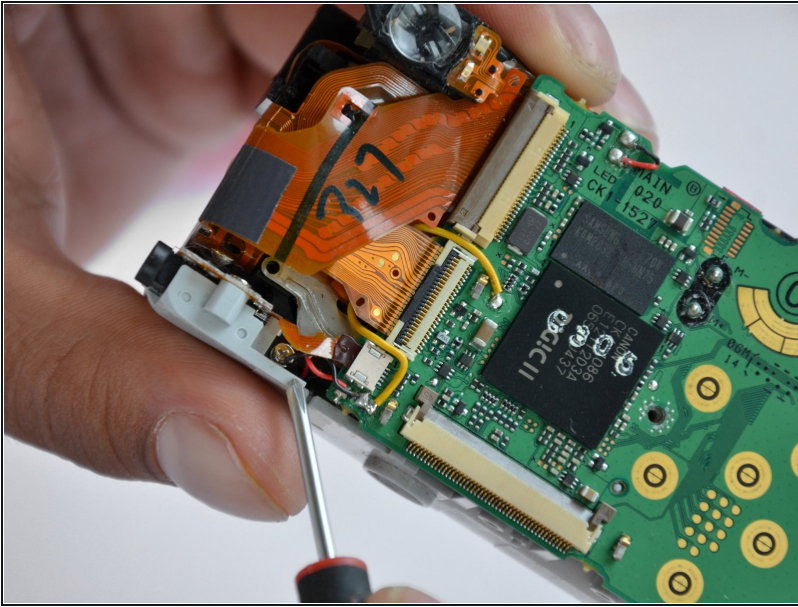
Step 23



- Remove the 2mm Phillips #00 screw that is located on the far left of the motherboard.

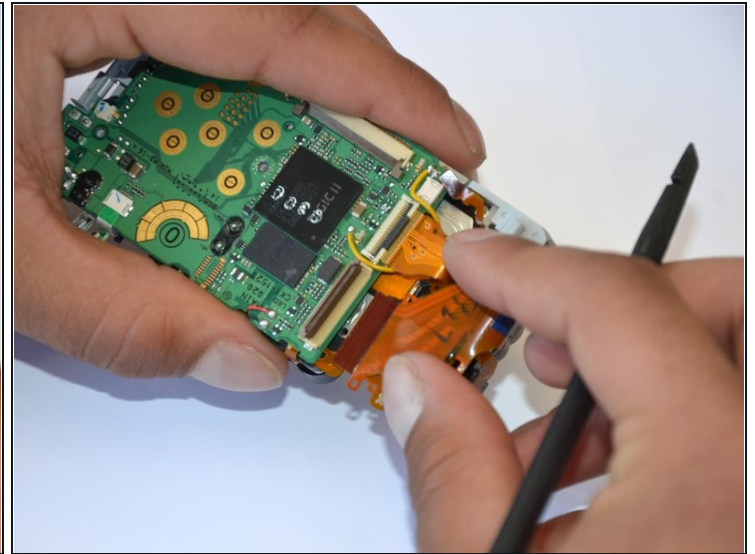
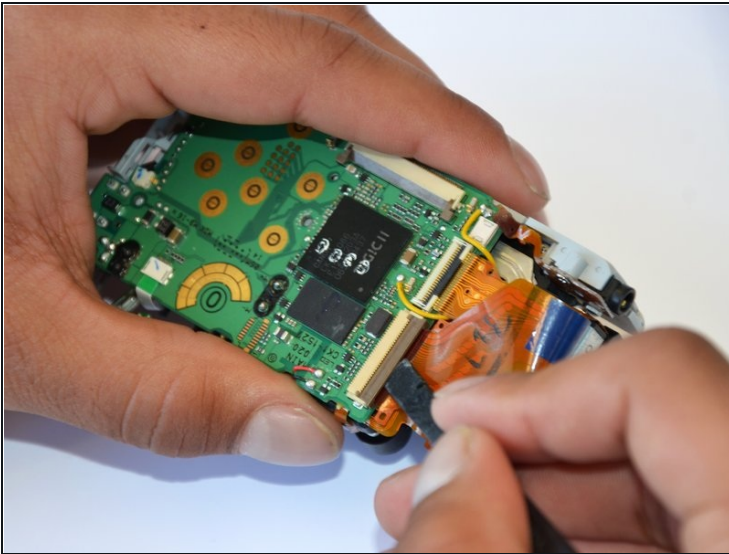
⚠ Be careful not to damage the multiple adjacent orange ribbons.

Step 24



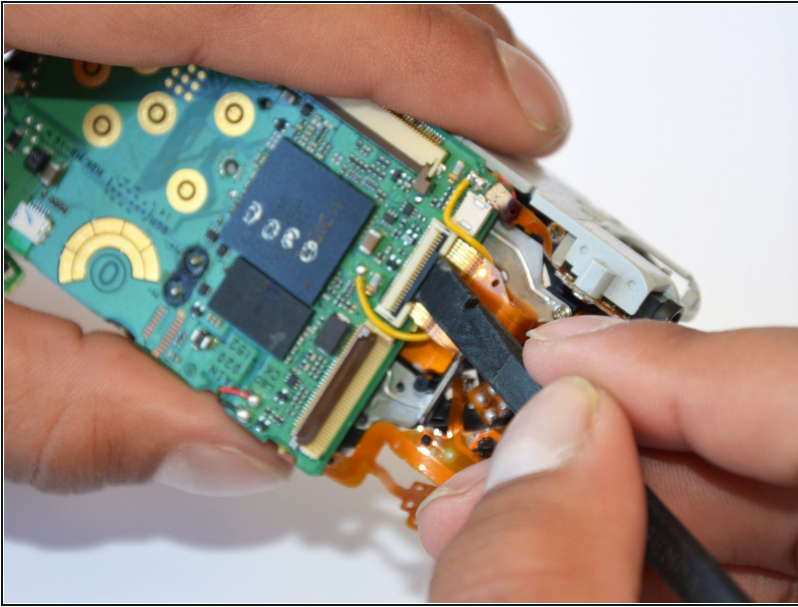
- Remove the 5mm Phillips #00 screw near the bottom left of the motherboard.

Step 25



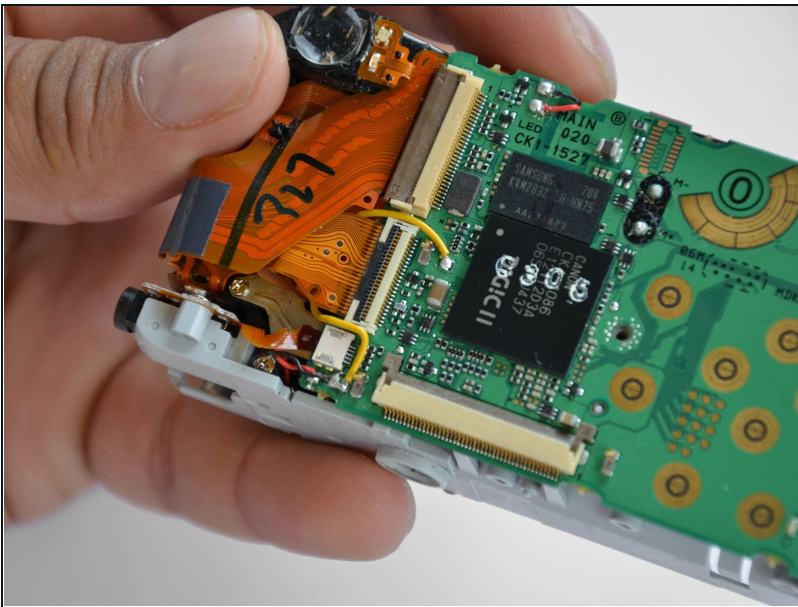
- Using a spudger, unlock the locking mechanism that holds the lower orange ribbon in place.
- Once unlocked, slide out the ribbon.

Step 26



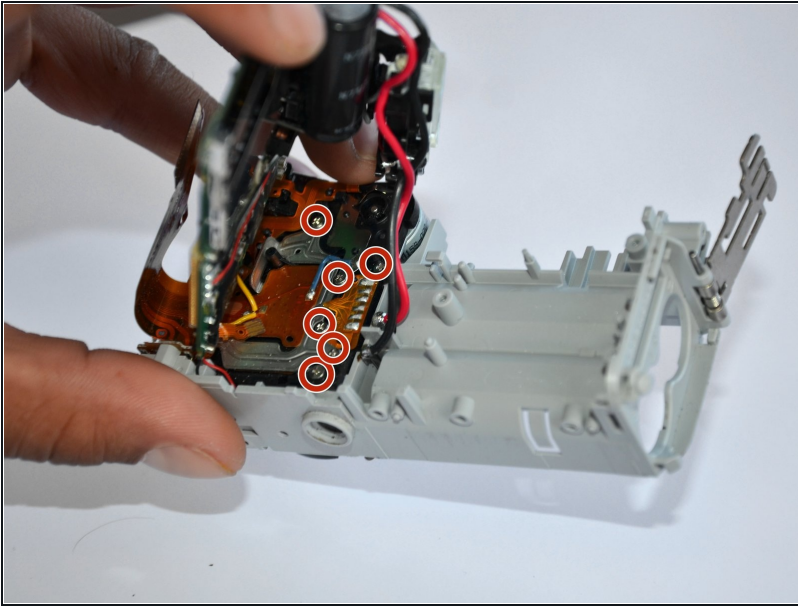
- Using a spudger, unlock the locking mechanism that holds the upper orange ribbon in place.
- Once unlocked, slide out the ribbon.

Step 27



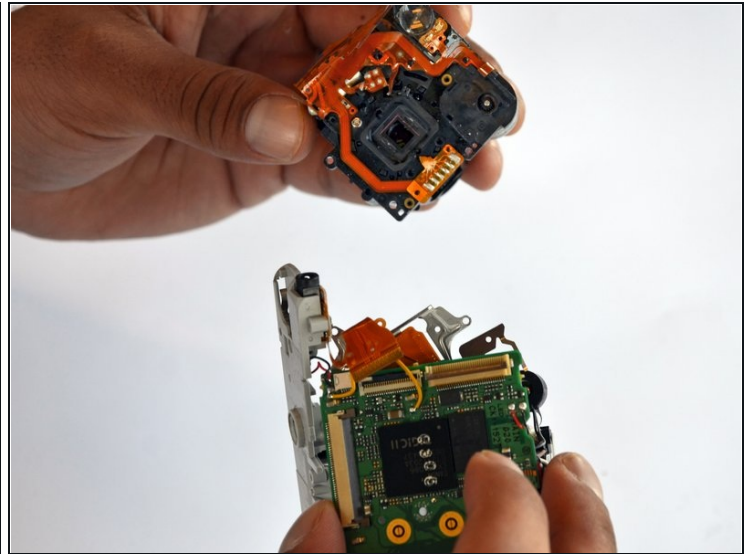
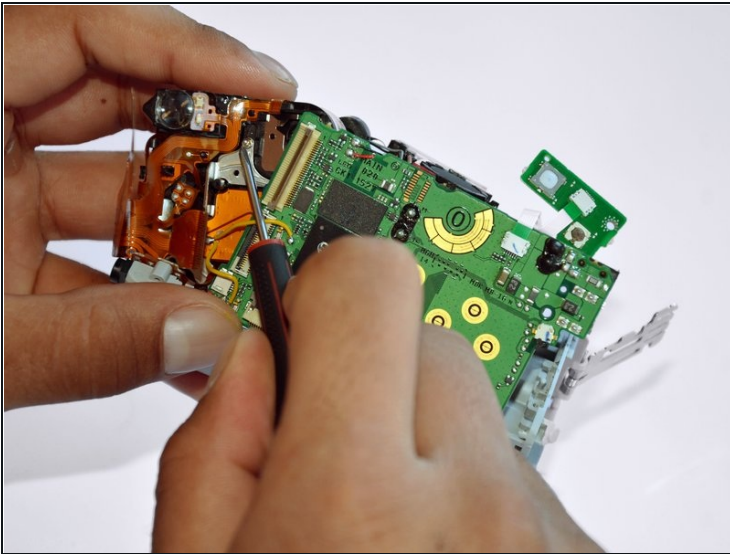
- All that is required is to unsolder the few remaining wires. Then, the motherboard will be ready to be replaced!

Step 28 — Front Lens



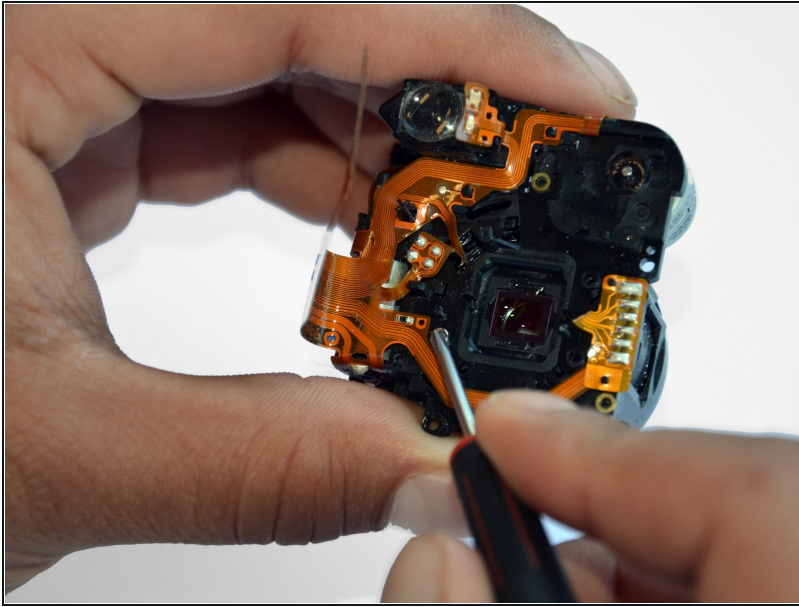
- Remove the six 2mm Phillips #00 screws that are located under the motherboard.

Step 29



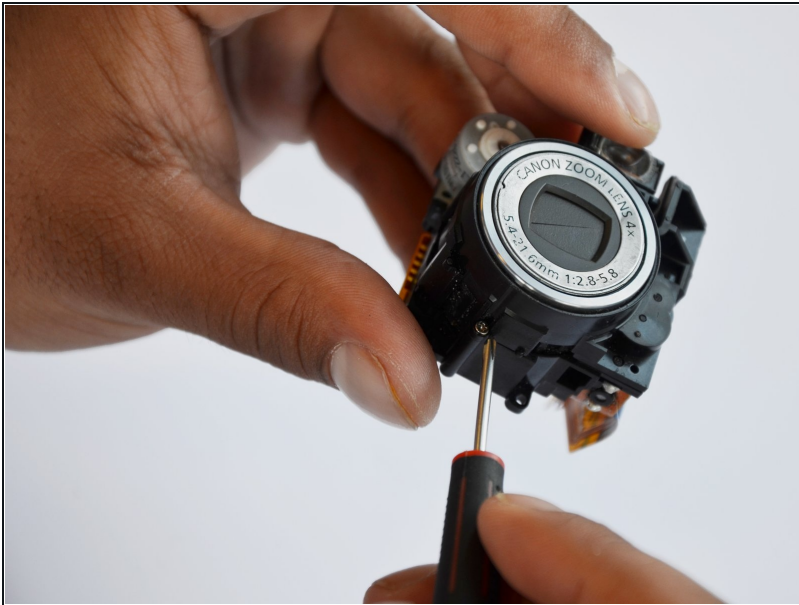
- Remove the 4mm Phillips #00 screw that is located under the now disconnected top orange ribbon.
- The lens piece can now be removed from the camera.

Step 30



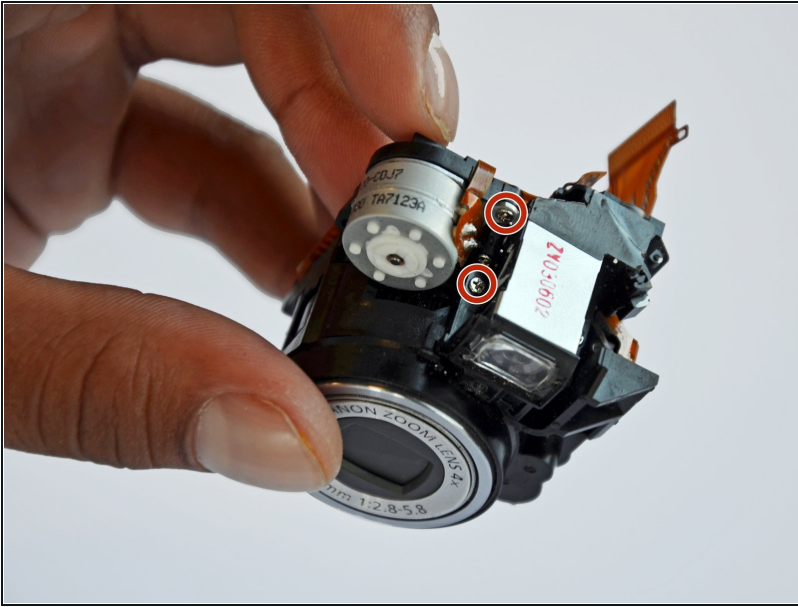
- Remove the 5mm Phillips #00 screw on the back of the lens piece.

Step 31



- Remove the 2mm Phillips #00 screw on the bottom of the lens piece.

Step 32



- Remove the two 2mm Phillips #00 screws on the top of the lens piece.

Step 33



- Gently slide off the black piece surrounding the lens. The lens is now disassembled!

To reassemble your device, follow these instructions in reverse order.