



# LG Aristo Screen Replacement

The guide was develop to help replace the...

Written By: Geobanny Cardenas



# INTRODUCTION

The guide was develop to help replace the screen of a LG Aristo, also known as LGMS210 or MS210.

---

## TOOLS:

- [Phillips #000 Screwdriver](#) (1)
  - [Tweezers \(optional\)](#) (1)
  - [1 x Opening Picks](#) (1)
  - [Metal Spudger](#) (1)
  - [iFixit Opening Tool](#) (1)
-

## Step 1 — Screen



- Turn off the device and make sure you are working on a flat, lit surface.

## Step 2



- Use an iFixit opening tool to pry off the back case.

## Step 3



- Remove the SD and SIM cards by sliding the cards out with your finger.

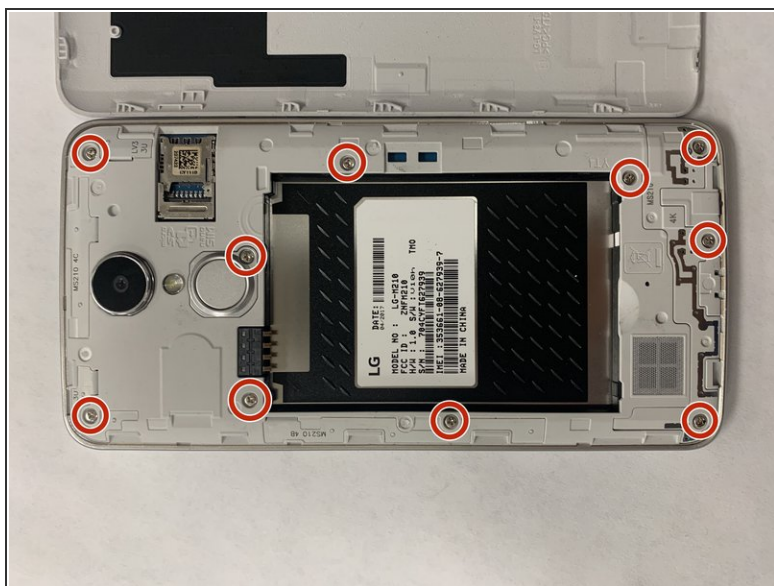
## Step 4



- Remove the battery by prying it up with a fingernail or opening tool from the bottom edge.

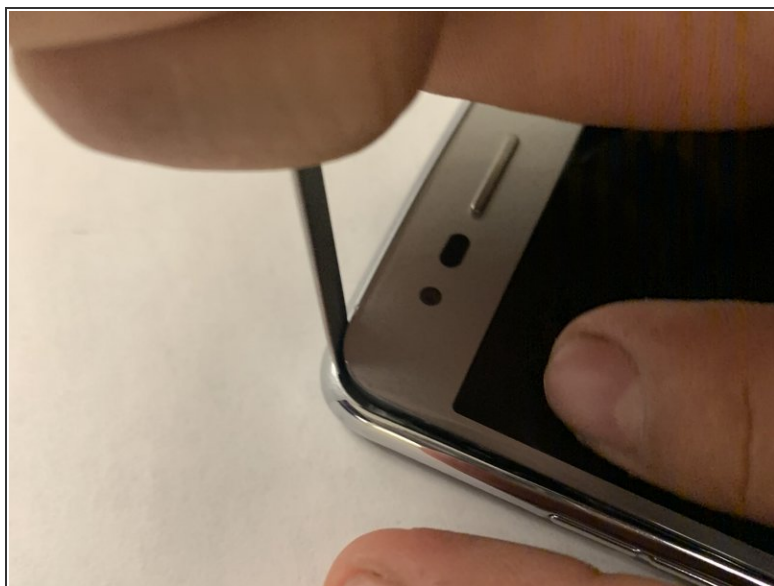


## Step 5



- Remove the ten screws from the midframe with a Phillips #000 screwdriver.

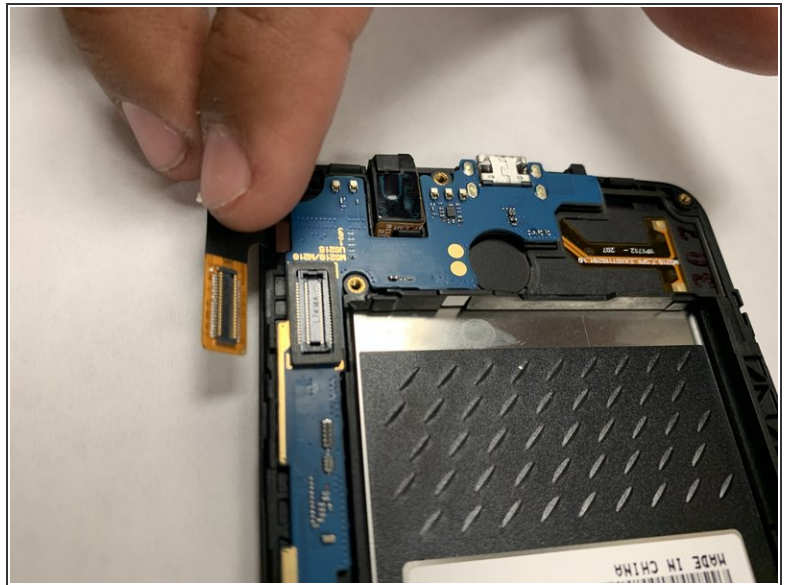
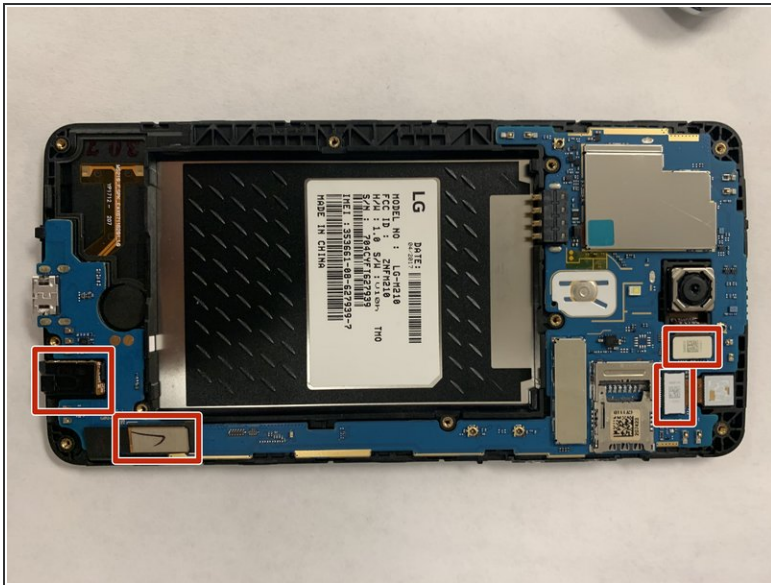
## Step 6



- Pry up on the screen with a plastic opening tool.

⚠ Try to avoid using a metal spudger as shown in the images as it has the possibility to damage the screen.

## Step 7



- Detach the cables from the press fit connectors.
- ⓘ There are four connectors in total, they consist of two on the cameras, one on the ear jack, and the one attached to the motherboard.
- You can lift them up with your finger or you can use tweezers (optional).

## Step 8



- Gently remove the motherboard.

## Step 9



- Replace the screen.

To reassemble your device, follow these instructions in reverse order. I hope that these steps have helped you with your issue.

This document was generated on 2023-01-15 03:43:01 PM (MST).

