



Audi Navigation Plus CD-ROM Drive Lens Cleaning

Do not forget to eject the navigation CD-ROM...

Written By: Wouter van der Post



INTRODUCTION

Do not forget to eject the navigation CD-ROM before you disconnect the unit.

This guide does **not** show you how to remove the unit from the car.

This guide contains the least amount of steps to clean the lens. In case you drop the white plastic disk that holds the CD-ROM down (step 2), you have to take apart the unit.

Follow [this guide](#) in case that has happened to you.

TOOLS:

[High Content Rubbing Alcohol](#) (1)

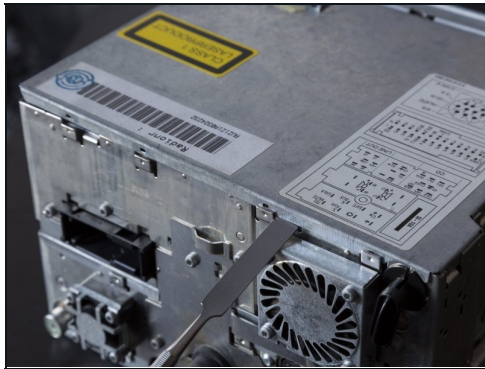
[Metal Spudger](#) (1)

[Phillips #00 Screwdriver](#) (1)

[Q-Tips](#) (1)

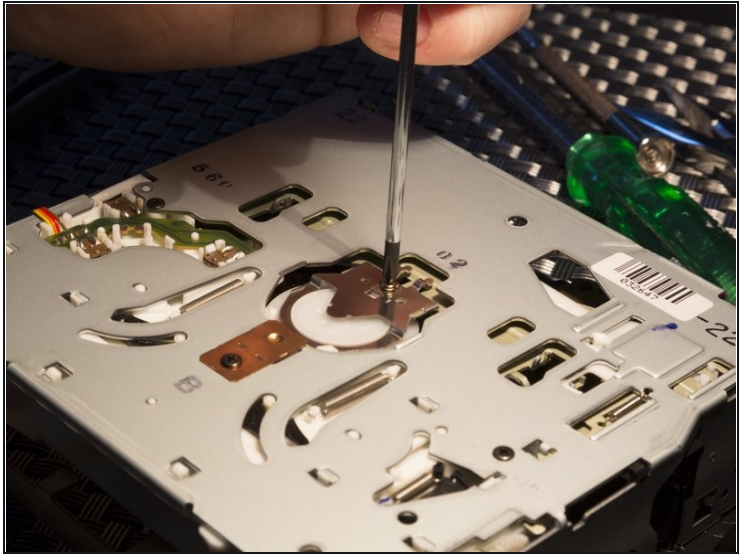
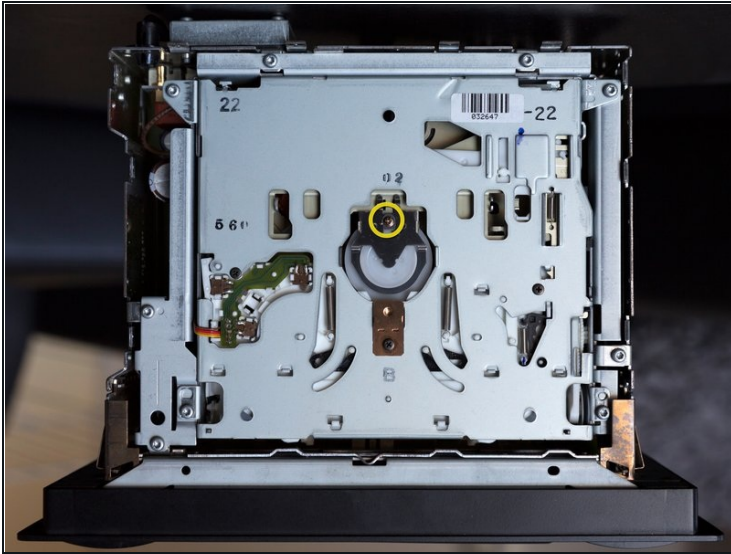
[Tweezers](#) (1)

Step 1 — Removing top cover



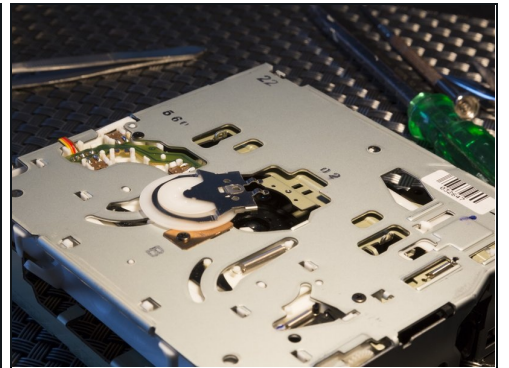
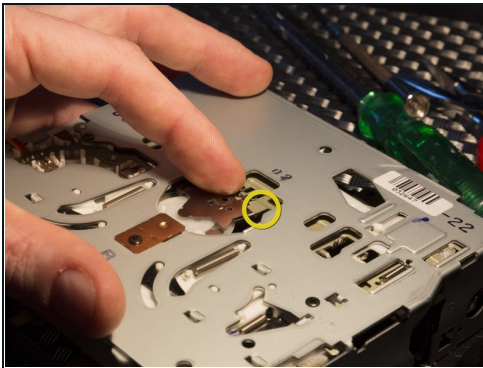
- Use the flat edge of a metal spudger and/or a flat head screwdriver to pry open the top cover.
- When closing the cover, make sure the cover is completely locked as shown in the third picture.

Step 2



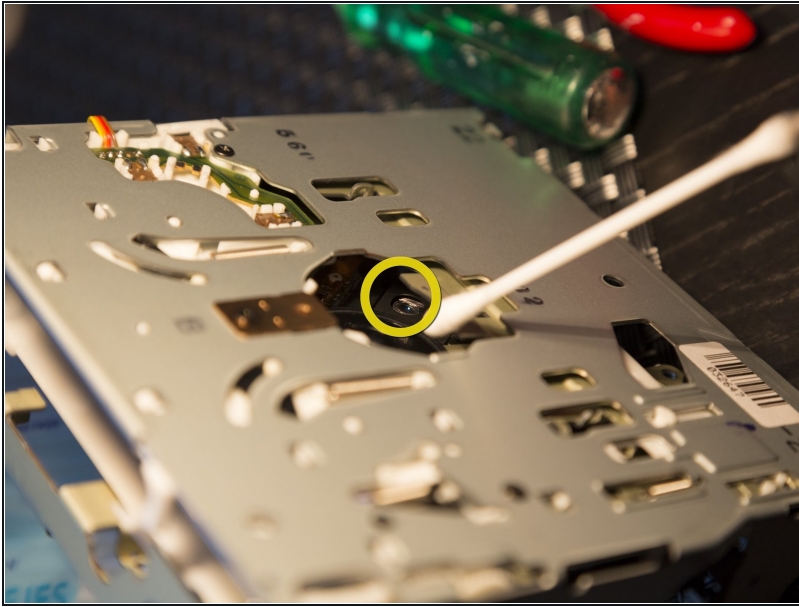
- Remove one gold colored Phillips screw located in the center.

Step 3 — Removing disk clamb



- It is advisable to grab an old CD and push it half way into the CD-ROM drive until it is visible through the hole marked in the first picture. This will prevent the part that has to be removed in this step to fall down into the unit, with the risk of damaging the laser.
 - The metal plate slides forward as shown in the first picture.
- ⚠ Use a pair of [tweezers](#) to very carefully slide forward and then lift up and remove the metal plate together with the white plastic disk, if they fall into the unit you are going to have to take it apart completely ([using this guide](#)).

Step 4 — Cleaning the lens



- Locate the lens inside the CD-ROM drive.
- ⚠ Make sure that there is no dust on or near the player and area you are working on. Dust can get on the lens and scratch it while you are cleaning. It is very important that the lens is not damaged because the lens is used to read the discs.
- Dip one end of a cotton swab in rubbing alcohol.
- Lightly dab the swab on the lens. Be very gentle.
- Let the lens dry before putting the unit back together.

To reassemble your device, follow these instructions in reverse order.