



# LG Fortune Rear Camera Replacement

This guide will help your camera to stay in focus, and work quicker by replacing the camera.

Written By: Cori Johnson



## INTRODUCTION

If your LG Fortune's camera has begun degrade a little bit and is not taking pictures as well as it should, or has, then use this guide to replace your camera

---

### TOOLS:

- [Phillips PH000 Screwdriver](#) (1)
  - [Spudger](#) (1)
  - [Metal Spudger](#) (1)
-



## Step 1 — Battery



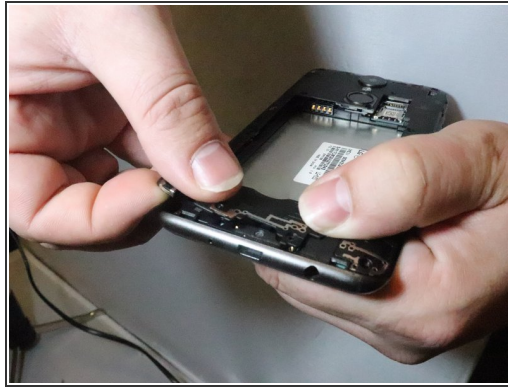
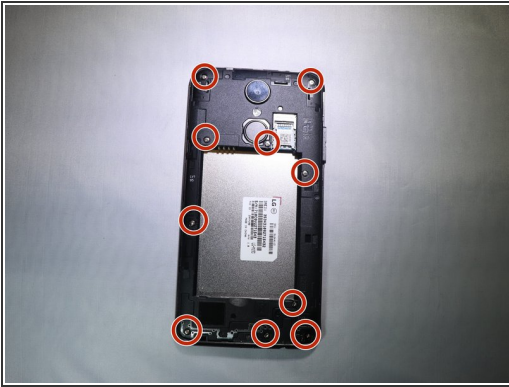
- Use the slit on the bottom right side of the phone to open the back cover of your phone.
  - ❗ It will be the bottom left of the phone if looking at it from the back.
- Slowly pry the back cover off the phone starting from the bottom up to the top.

## Step 2



- Use the slot in the middle of the bottom edge of the battery to pry it up and out of the case.

## Step 3 — Motherboard



- Using a PH000 screwdriver, remove the ten 4mm screws on the back panelling.
- Remove the back panelling from the device with your fingers or a spudger.
- Work slowly side to side to release this back casing and expose the motherboard.

## Step 4



- Unplug the video card from the motherboard with a spudger or plastic opening tool.
- ⚠ Using the metal spudger as shown in the photos has the potential to damage your device.

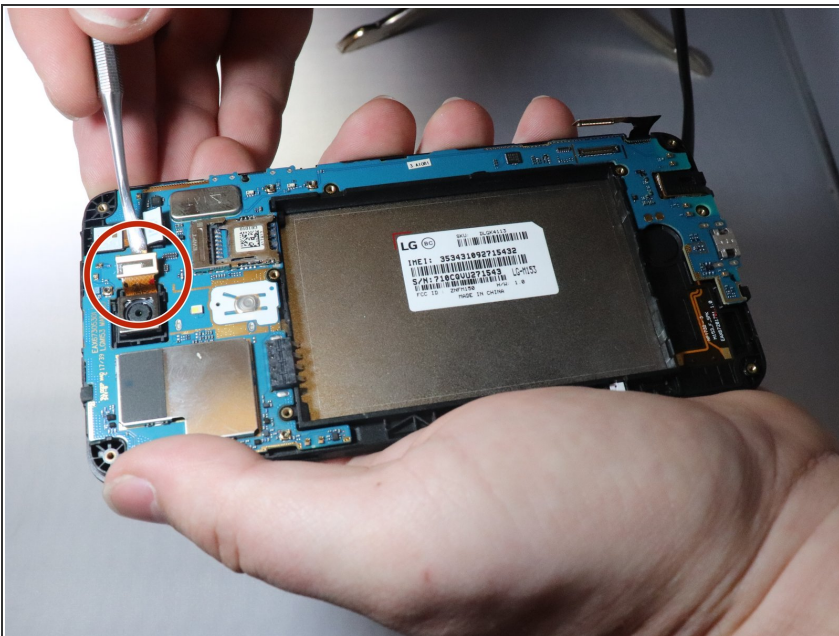


## Step 5



- Unplug the front facing camera press fit connector from the motherboard by prying upwards with a spudger or plastic opening tool.
- ⚠ Using a metal spudger as shown in the photos could potentially damage your device.

## Step 6



- Unplug the rear facing camera ribbon cable from the motherboard by prying up the press fit connector with a spudger.
- ⚠ Using a metal spudger as shown in the photos has the potential to damage your device. Choose an ESD safe tool instead.

## Step 7



- Use the spudger to pry off the motherboard from the rest of the device on the top left corner down to the bottom right corner

## Step 8 — Rear Camera



- Unplug the camera from the phone using a metal spudger to get underneath the tape and remove the camera.

 This will require a bit of force. Don't be afraid to apply the necessary amount to remove.

To reassemble your device, follow these instructions in reverse order.