



Braven BRV-X Front Speaker Panel Replacement

This guide will go through a dissassembly of the Braven BRV-X's front speaker and buttons panels.

Written By: Trey Peterson



INTRODUCTION

Use this guide to remove the front speaker panel in your device. You'll need to know how to solder to fully replace the speaker panel in your Braven BRV-X. The [How to Solder and Desolder Connections](#) guide may help you with this guide.



TOOLS:

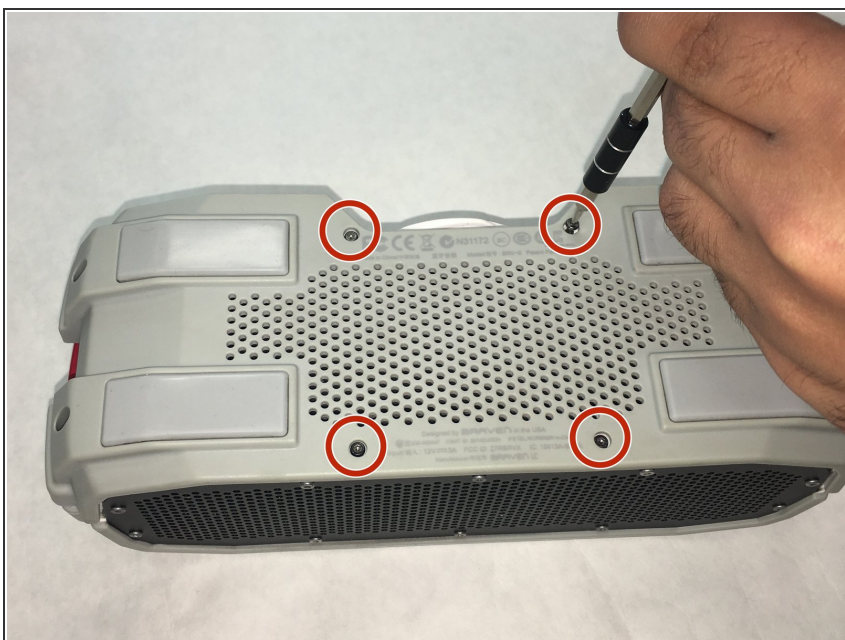
- [Metal Spudger](#) (1)
 - [1.5mm Hex Screwdriver](#) (1)
 - [Phillips #00 Screwdriver](#) (1)
-

Step 1 — Front Speaker Panel



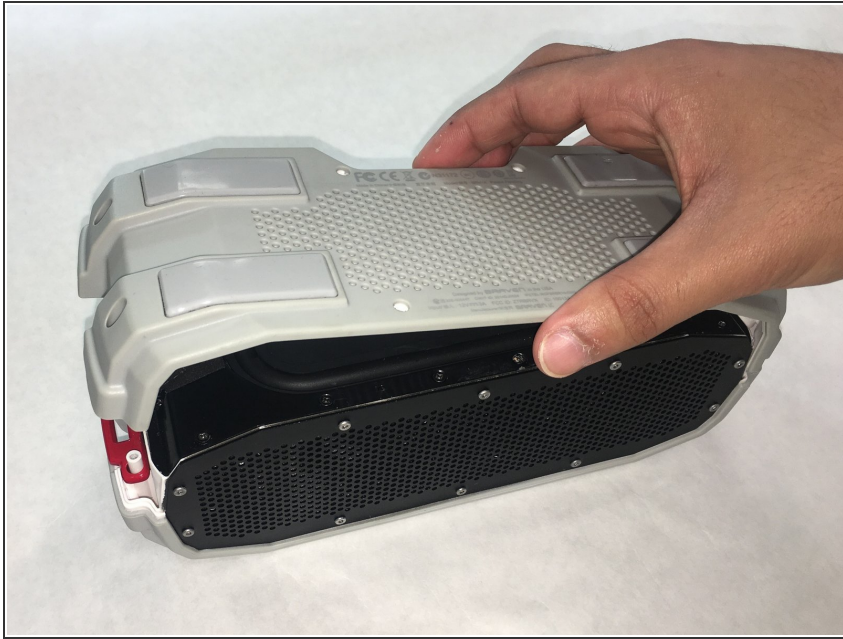
- Remove four 1.1 cm outer screws in the outer shell using the Phillips #00 screwdriver.

Step 2



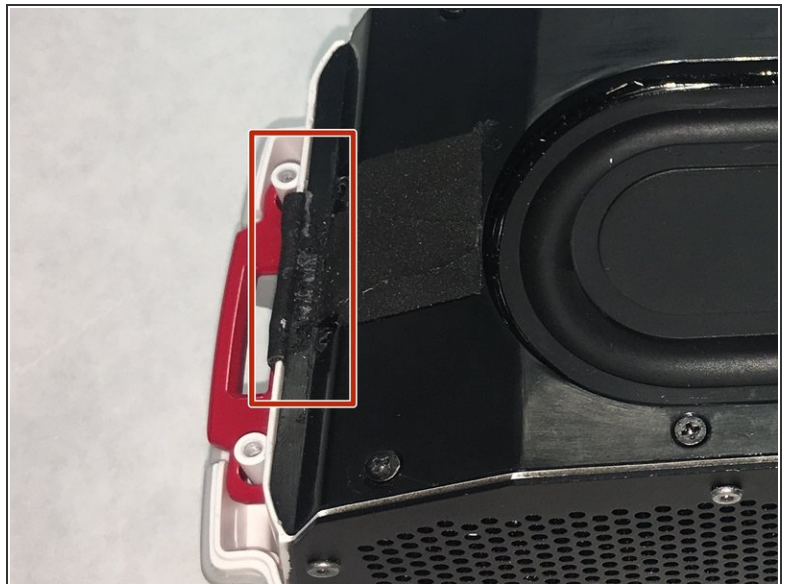
- Remove four 1.3 cm inner screws in the outer shell using the 1.5mm Hex screwdriver.

Step 3



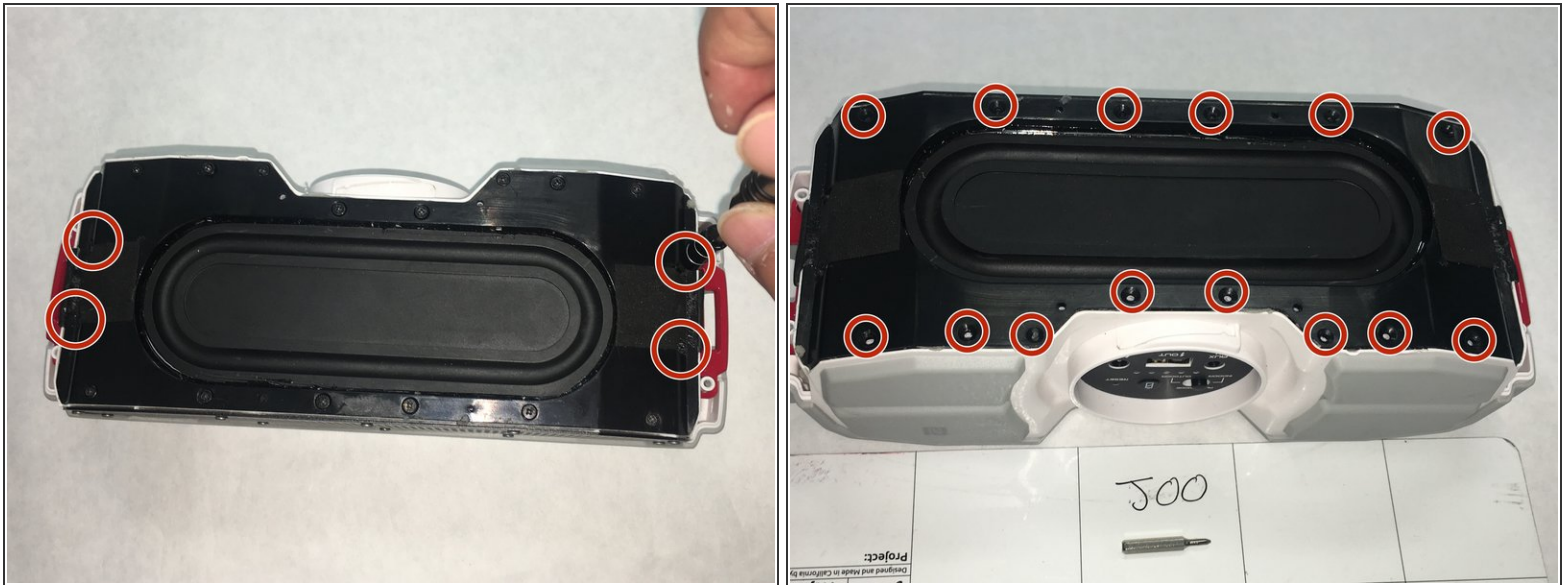
- Gently remove the outer shell.

Step 4



- Cut adhesive tape on both sides.

Step 5



- Remove eighteen 0.9cm screws in the inner shell using the Phillips #00 screwdriver.

Step 6



- Pry open the glued inner shell using a spudger around all sides of the shell.

⚠ Don't use too much pressure as that could cause damage to the plastic.

Step 7



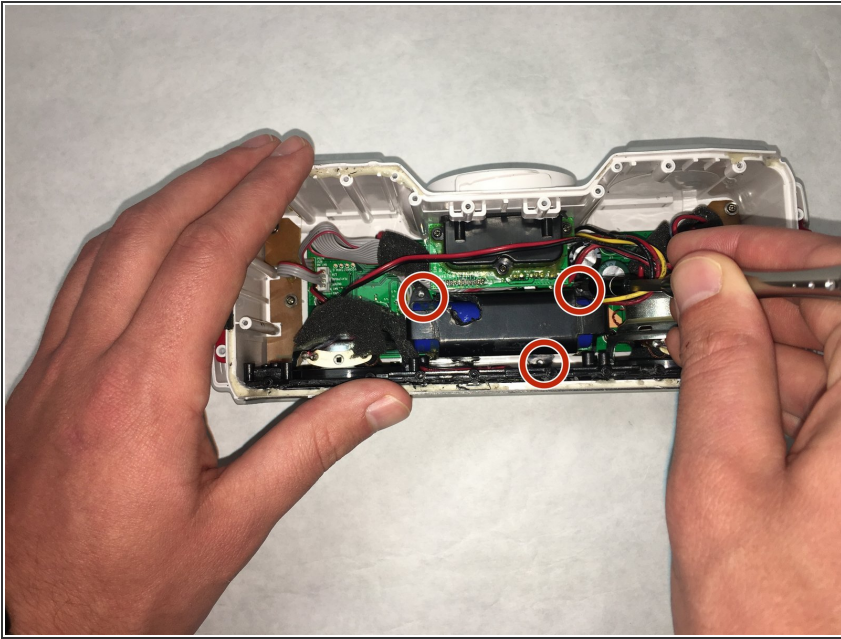
- Remove ten 0.7 cm screws in the front plate using the 1.5 mm Hex screwdriver.

Step 8



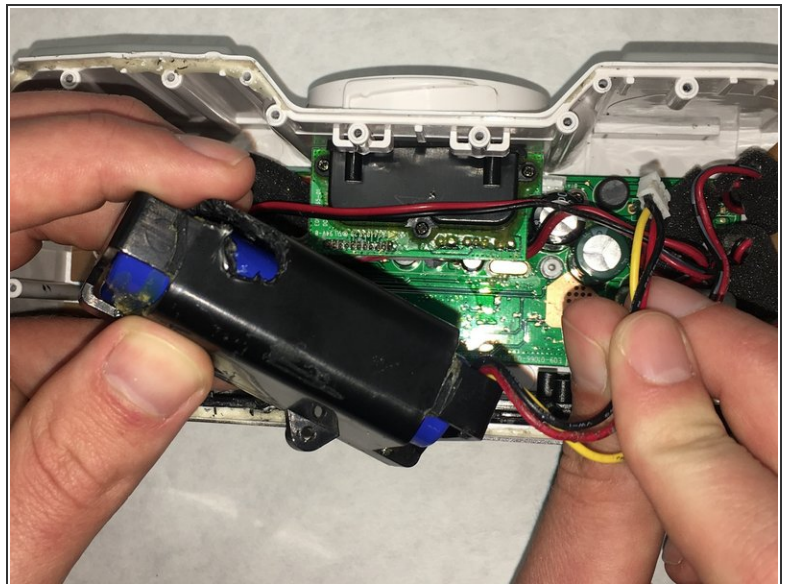
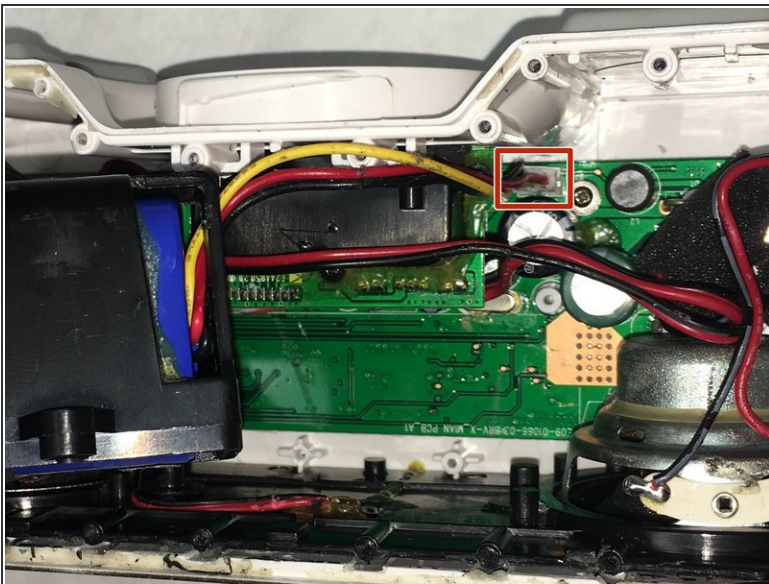
- Use a spudger to open the front speaker plate.

Step 9



- Remove three 1.0 cm screws from the battery unit.
- ⓘ It is recommended (but not required) to remove the battery.

Step 10



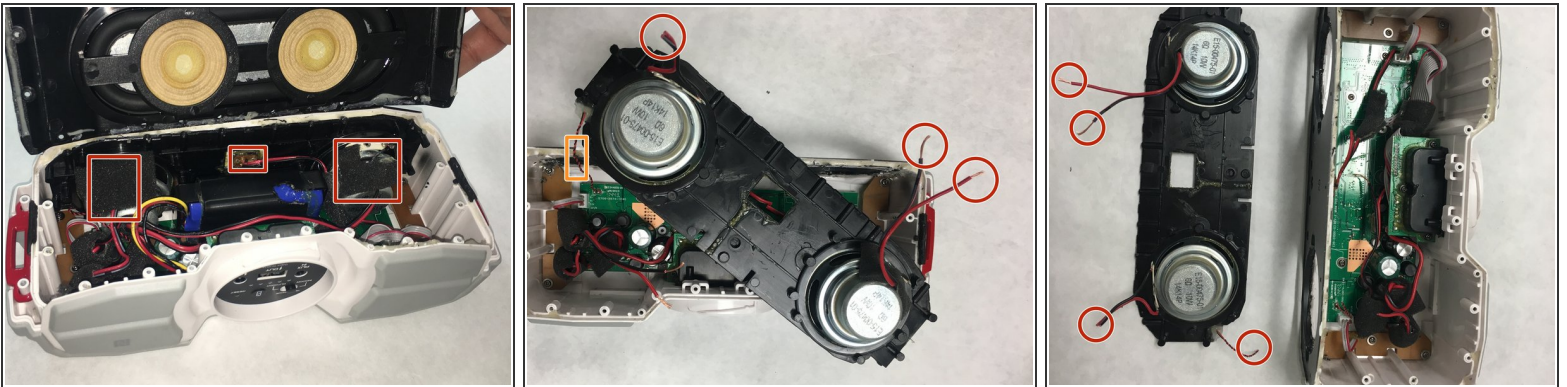
- Disconnect the ribbon cable attached the main board.

Step 11



- Pry open the second plate holding in the speaker using a spudger around all sides.
 - ❗ It is recommended to use a spudger to remove the heavily glued areas between the plates before prying.
- ⚠ Don't use too much pressure as that could cause damage to the plastic.

Step 12



- Cut the 20 gauge wires attached to the front IR sensor and two speaker wires.
 - ❗ Leave enough length on the wire to work with it afterwards.
- Cut the 22 gauge wire attached in the corner.
- Solder the new speaker plate during reassembly.
- ❗ To properly solder and desolder connections, visit the [How to Solder and Desolder Connections](#) guide.

To reassemble your device, follow these instructions in reverse order.