

Gasket in the inlet valve

The seals of the inlet valve are under a lot of...

Written By: VauWeh



INTRODUCTION

The seals of the inlet valve are under a lot of strain and need to be replaced from time to time. The replacement is easy. This will show you how to do this.



TOOLS:

TR10 Torx Security Screwdriver (1)

Metal Spudger (1)



PARTS:

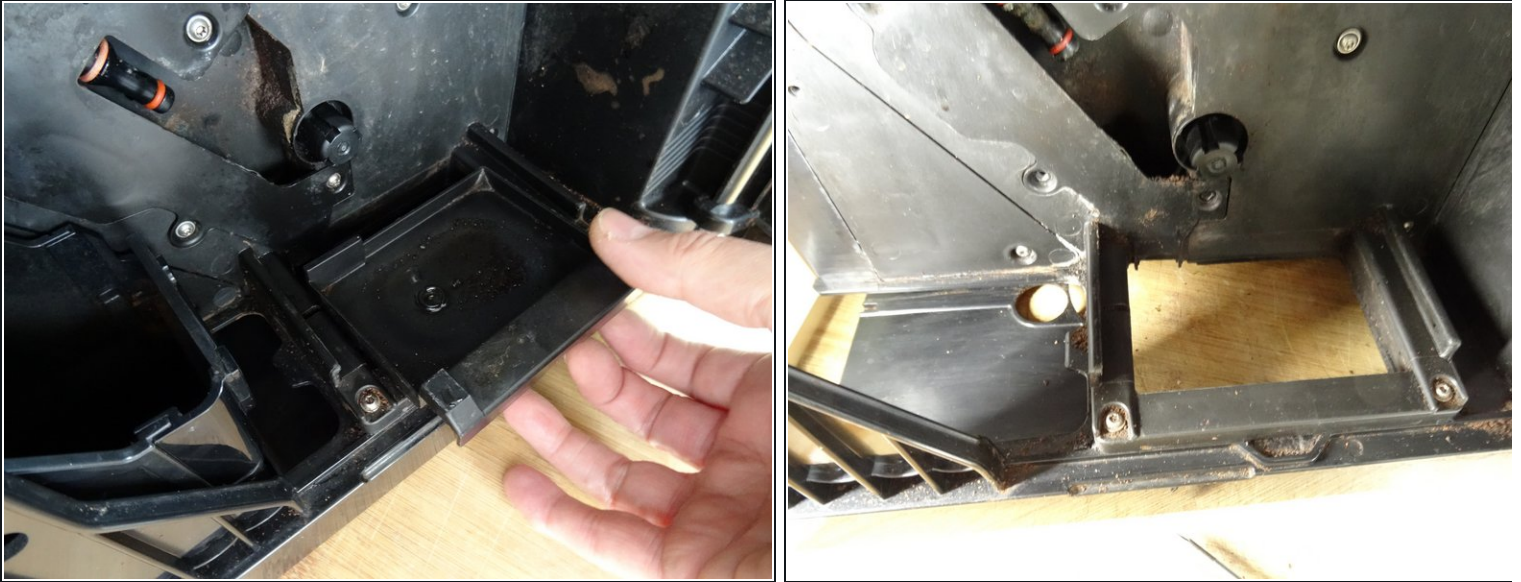
Dichtungen für den Einlaufstutzen (2)

Step 1 — Gasket in the inlet valve



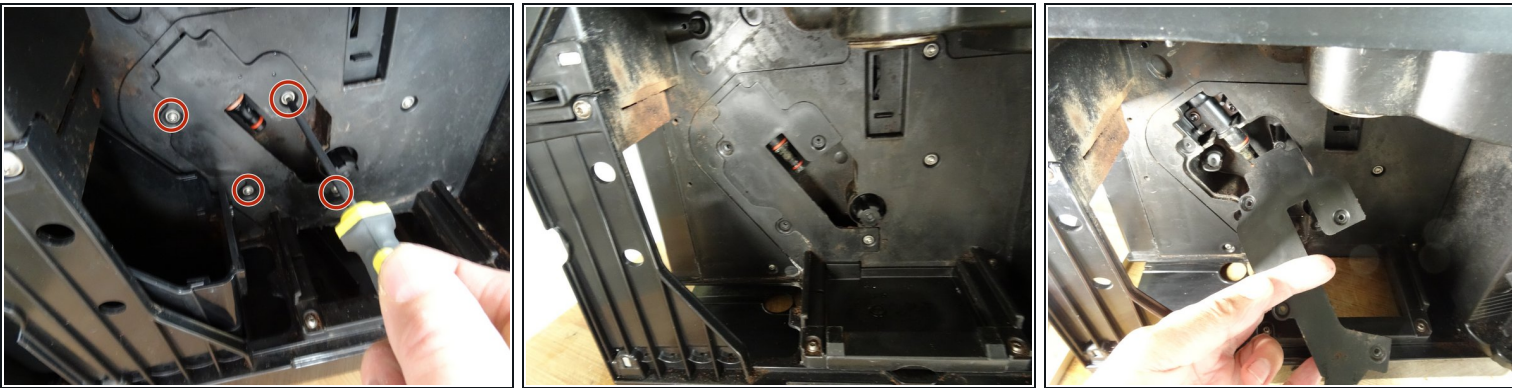
- Open the side panel and remove the brewing unit.

Step 2



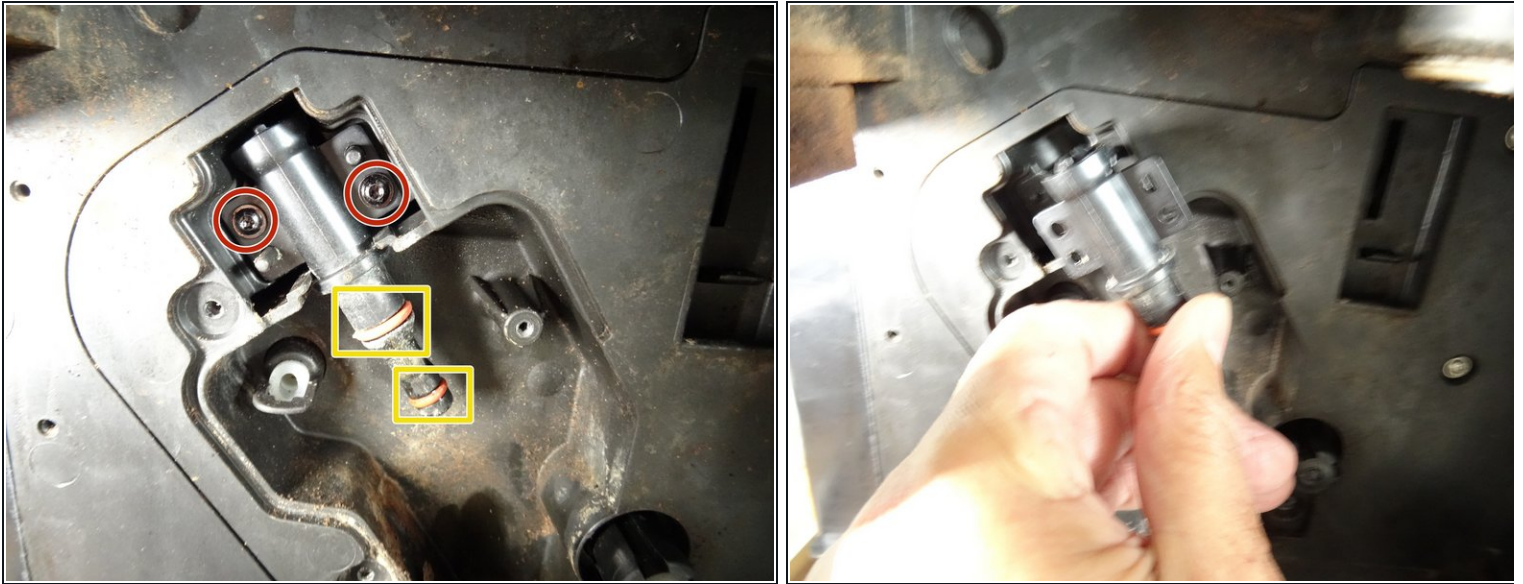
- Remove the drip tray underneath the brewing unit.

Step 3



- Unscrew the four Torx T10 screws that hold in place the cover of the inlet valve.
- Remove the cover.
- Clean well the inside and back panel of this cover.

Step 4



- You can replace the seals, it's even better if you remove the nozzle completely.
- Replace the gaskets using a blunt tool, such as a spatula.
- ⓘ The upper gasket is larger.
- Smear the gaskets with silicone grease.
- To remove the nozzle, you have to unscrew the two T10 Torx screws.

Step 5



- Here you see the removed socket. Note the double O-rings.
- Open the valve to do this, the slot at the upper end must be twisted a little, then the inside comes out. Check the spring, the valve stem and the two seals. When assembling, pay attention to the correct position of the valve stamp: it must point to the water inlet side, otherwise the valve will not open! (**Third picture shows wrong direction**)
- Replace the seals on the nozzle and lightly grease them with food grade silicone grease.

Work through the steps in reverse order to re-assemble your device.