



# Saeco Minuto coffee spout replacement

Replace the coffee spout of a Saeco Minuto.

Written By: VauWeh



## INTRODUCTION

If your coffee tastes bad or is running only from a single spout, the spout may be clogged with coffee oil. Follow this guide to clean or replace the spout.



### TOOLS:

- [TR10 Torx Security Screwdriver](#) (1)
- [iFixit Opening Tool](#) (1)
- [T20 Torx Screwdriver Bit](#) (1)



### PARTS:

- [New Item](#) (1)

<https://www.juraprofi.de/Saeco-Ersatzteile/Minuto-Moltio-Baristo/Gehaeuse-Wassertank-und-Aufschaeumer/Saeco-Kaffeeauslauf-Minuto::12049.html>

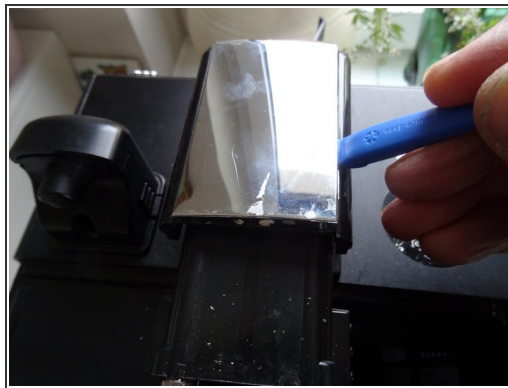
## Step 1 — Open a Saeco Minuto



**⚠ Disconnect the power plug!**

- Remove the water tank.
- Remove all the coffee beans.
- Remove the brewing assembly.
- Remove the drip tray and the coffee grounds drawer.

## Step 2



- Pry up with a plastic opening tool at the bottom edge of the chrome-plated cover to lift up the coffee dispensing spout. This cover is often very tight, so you have to pry hard and hope that the part does not break.
- When the lower edge of the spout is released, you can pry on the side edge until the chrome cover comes off completely.



### Step 3



- Remove the Torx T10 screw at the top edge of the coffee dispensing spout.

### Step 4



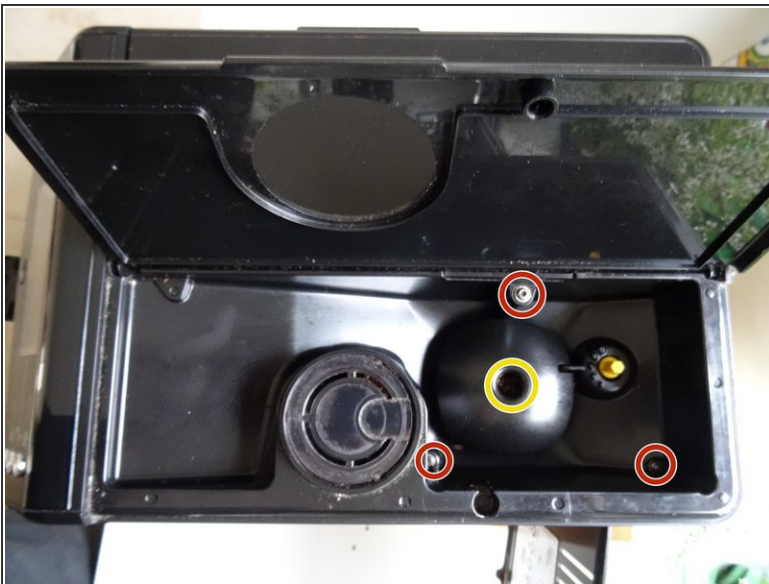
- Lift off the black cover over the coffee dispensing spout. The sliding nozzles will come off at the same time.

## Step 5



- Remove both Torx T10 screws on the left and right at the bottom edge of the coffee dispensing spout.
- Pull off the hot water dispensing spout.

## Step 6

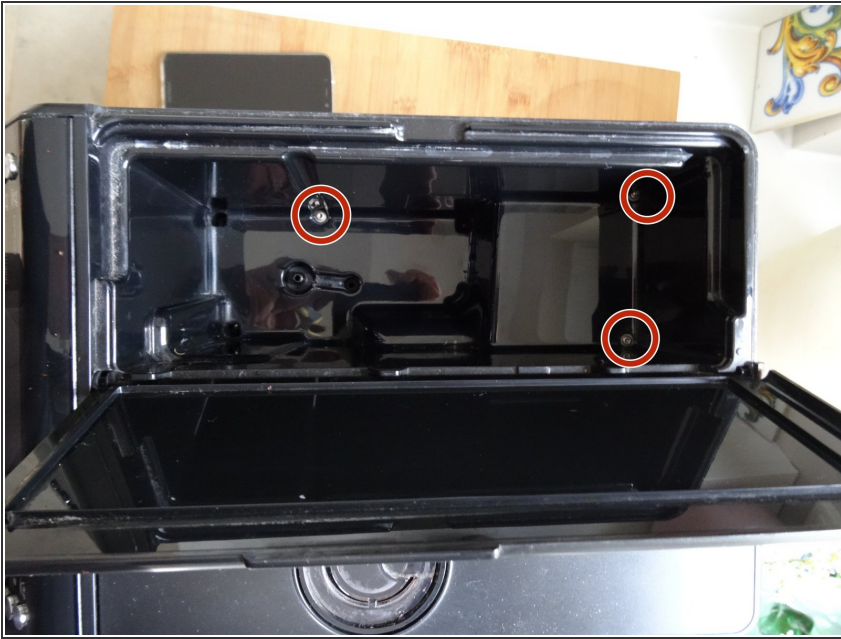


- Remove the Torx T20 screw on the finger guard of the grinder. Remove the finger guard.
- ⓘ If the screws are covered with coffee remains, you should first clean them with a needle and a vacuum cleaner.
- Remove three Torx T10 screws in the bean container.

This document was generated on 2022-08-18 04:38:52 AM (MST).



## Step 7



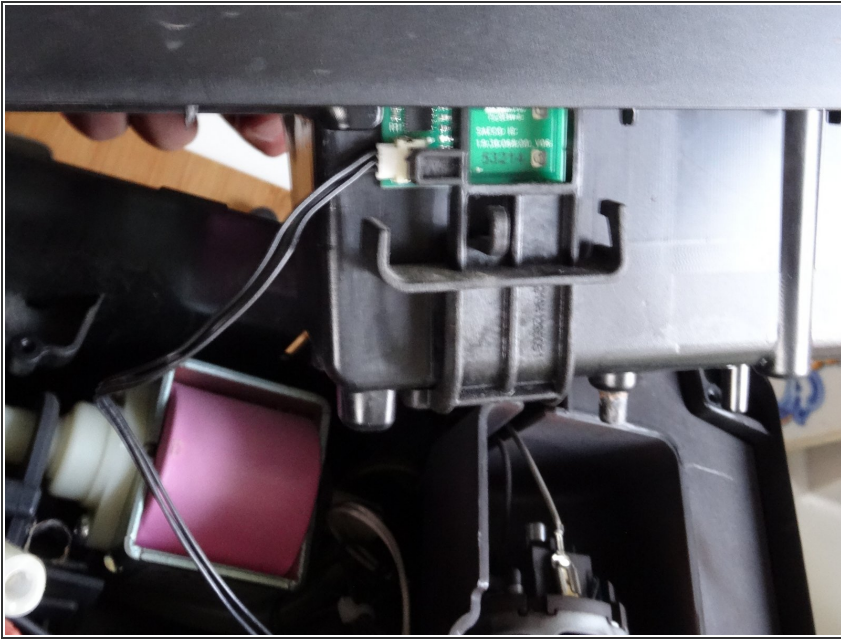
- Remove the three Torx T10 screws under the water tank.

## Step 8



- Grab the upper cover on the sides and lift it up.
- ⓘ The cover is still connected with a cable and a tube.
- Take off the silicone tube.

## Step 9



- Remove the water level sensor cable from its brackets.
- Carefully remove the plug from the water level sensor.
- The cover is now free and can be removed.

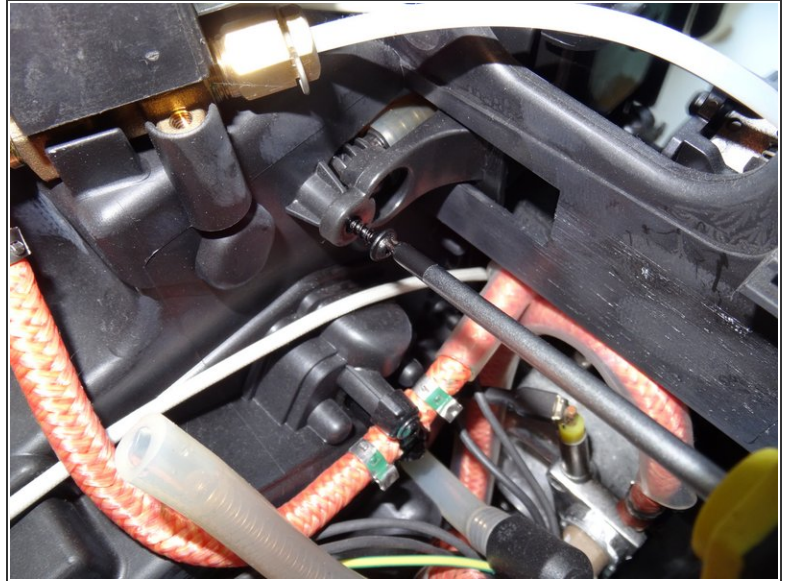
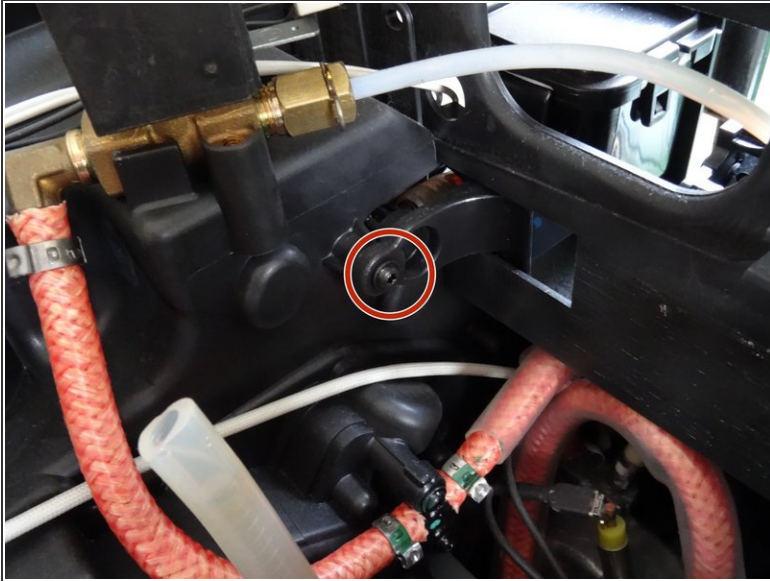
## Step 10 — Coffee spout



- Remove the Torx T10 screw at the lower edge of the coffee spout.



## Step 11



- Remove the Torx T10 screw holding the coffee distribution unit in place.
- ⓘ This screw is a little difficult to access. You will need a short screwdriver or one with a flex extension.

## Step 12



- Remove the Torx T10 screws below the coffee distribution unit.

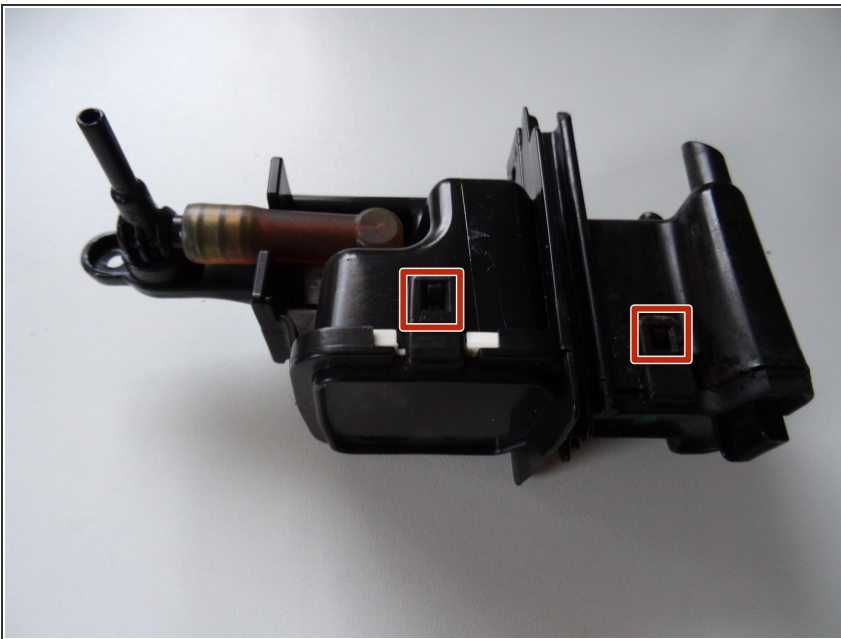


## Step 13



- Lift out the coffee spout. It may stick a little.

## Step 14



- ⓘ There are two tabs and clips on either side of the coffee spout that hold together the upper and lower half.
- Push up the tabs using a blunt tool to release all four clips.
- Separate the two halves of the coffee spout.
- ⓘ Between the two you will find a white silicone gasket. Be careful not to damage or loose it. Reposition it carefully and precisely when reassembling.

## Step 15



- ⓘ This spout was grimy with coffee oils!
- Clean everything well or replace the spout with a new one.
- ⓘ In the meantime, there is a recommended conversion kit that does not get so dirty: Saeco Minuto Coffee Spout V2 Conversion Kit 421941309991

Follow the steps in reverse order to reassemble your device.