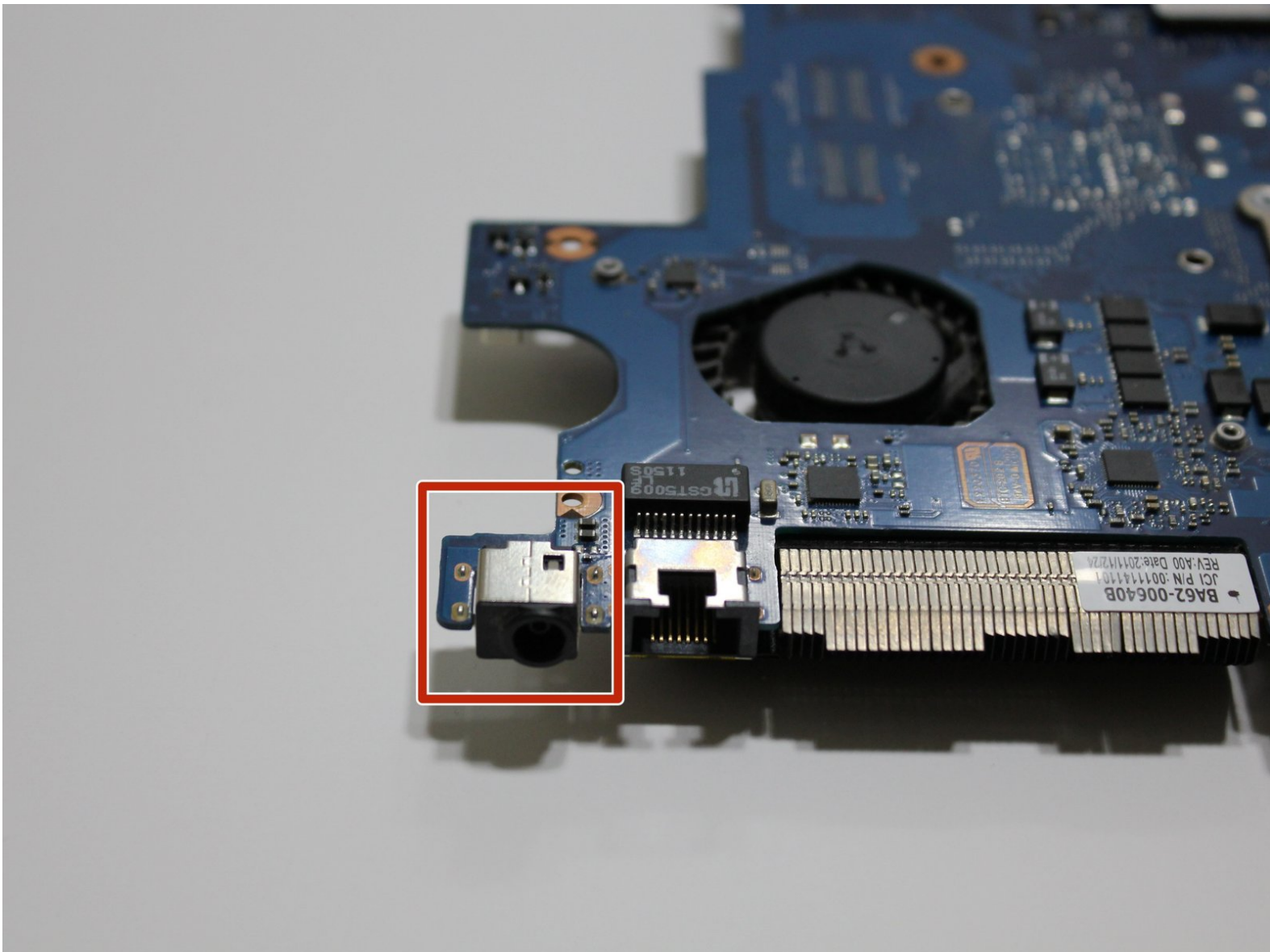




# Samsung Series 3 NP300E5A-A02UB AC DC Powerjack Replacement

This guide will outline the process for replacing the AC DC power jack on the Samsung Series 3 NP300E5A-A02UB.

Written By: Noah Broyles



# INTRODUCTION

Replacing the power jack is an involved process. In order to reach this part it is necessary to remove several laptop hardware components. Follow the steps of this guide in order to complete the project.



## TOOLS:

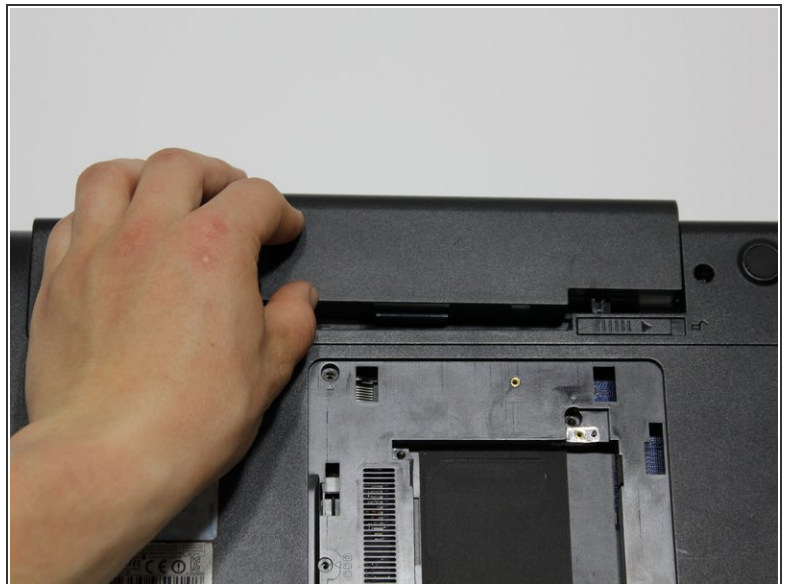
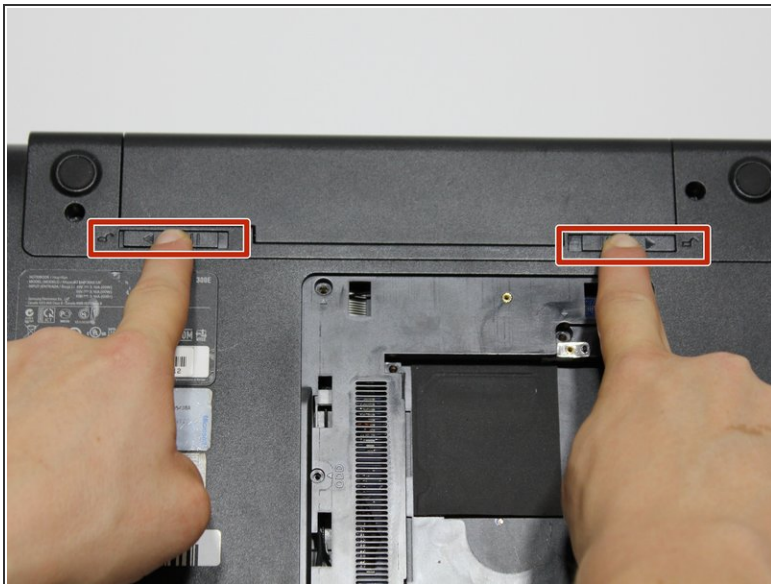
- [Spudger](#) (1)
  - [iFixit Opening Tools](#) (1)
  - [JIS #0 Screwdriver](#) (1)
  - [JIS #1](#) (1)
  - [ESD Safe Tweezers Blunt Nose](#) (1)
  - [Soldering Iron](#) (1)
  - [Solder](#) (1)
-

## Step 1 — Battery



- Place the computer upside down, with the battery pack facing away from you.

## Step 2



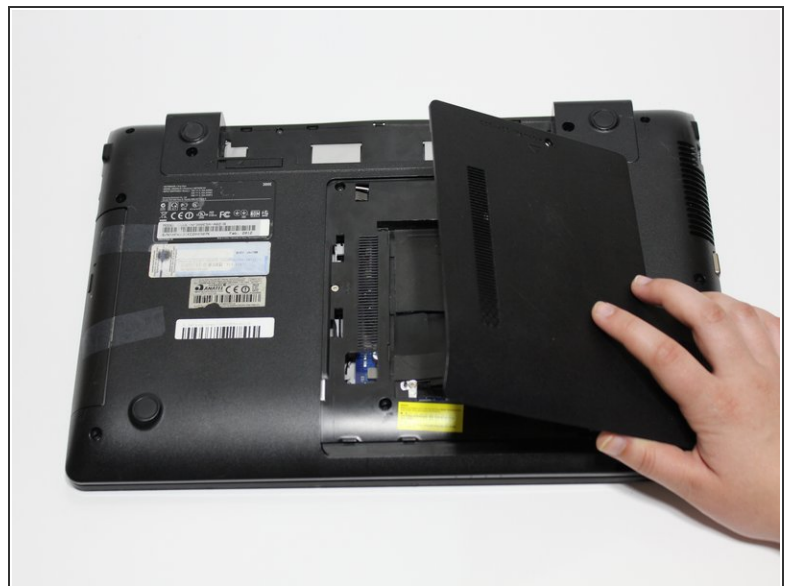
- Remove the battery by pushing out the locks on either end then pushing the battery away from you.

## Step 3 — Panel



- Using the J0 Japanese Industrial Standard screwdriver, remove the 4.5mm screw on the ODD/HDD Memory panel.

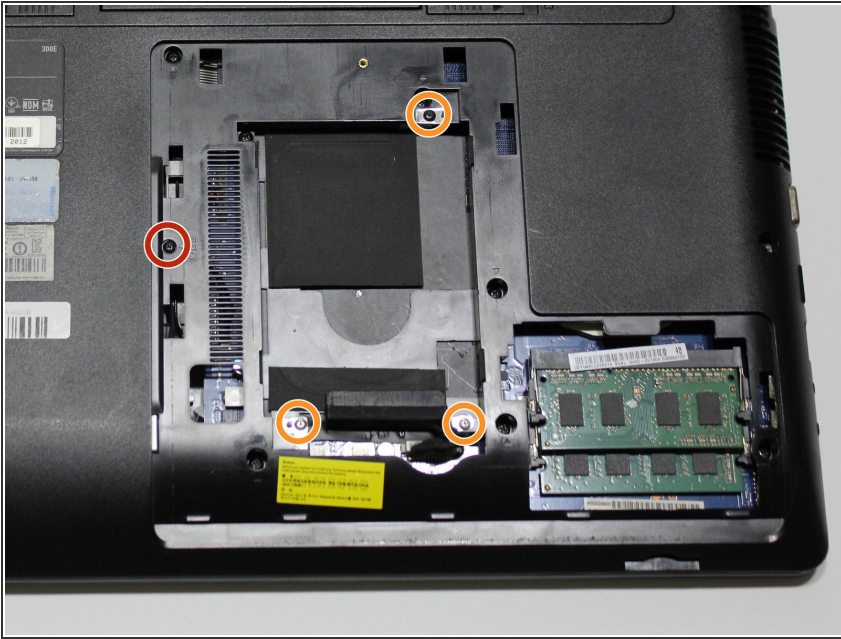
## Step 4



- Pull the panel towards you to release it, then lift it off the computer.

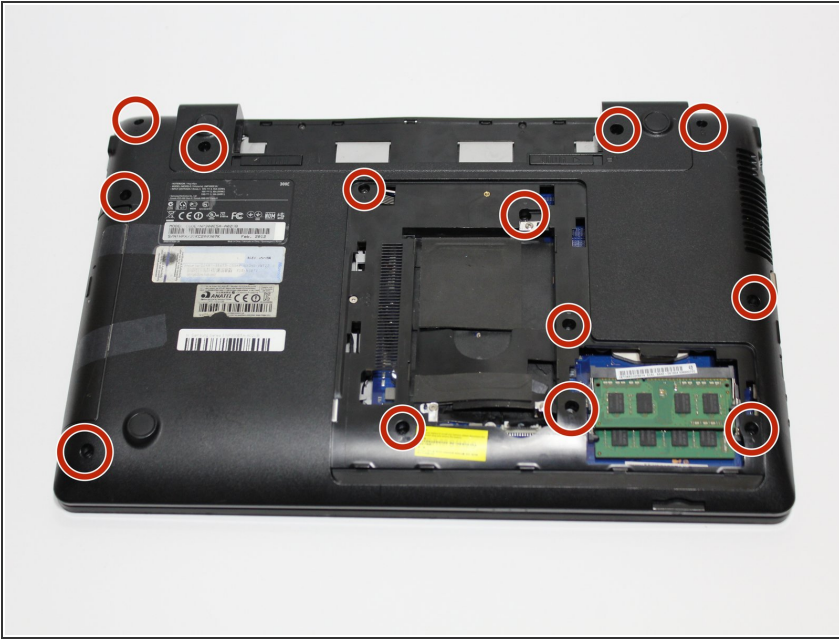


## Step 5



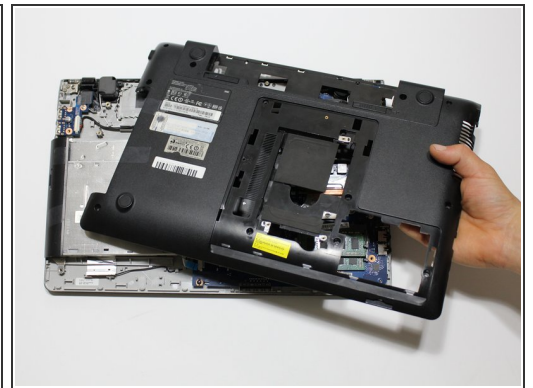
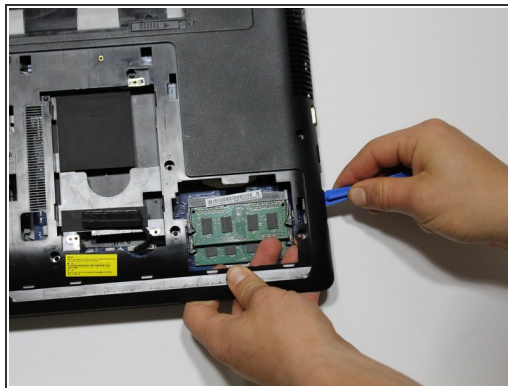
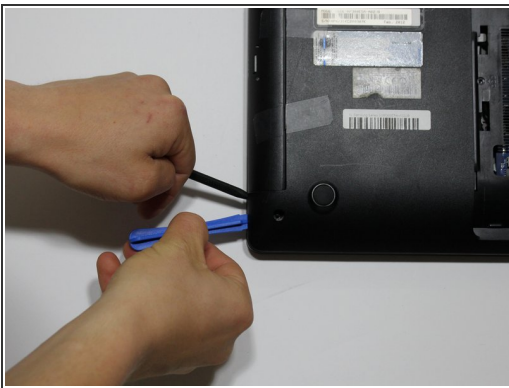
- Using the J0 Japanese Industrial Standard screwdriver, remove the 4.5mm screw next to the label "ODD."
- Remove the three 4.5mm screws from around the memory drive nest.

## Step 6



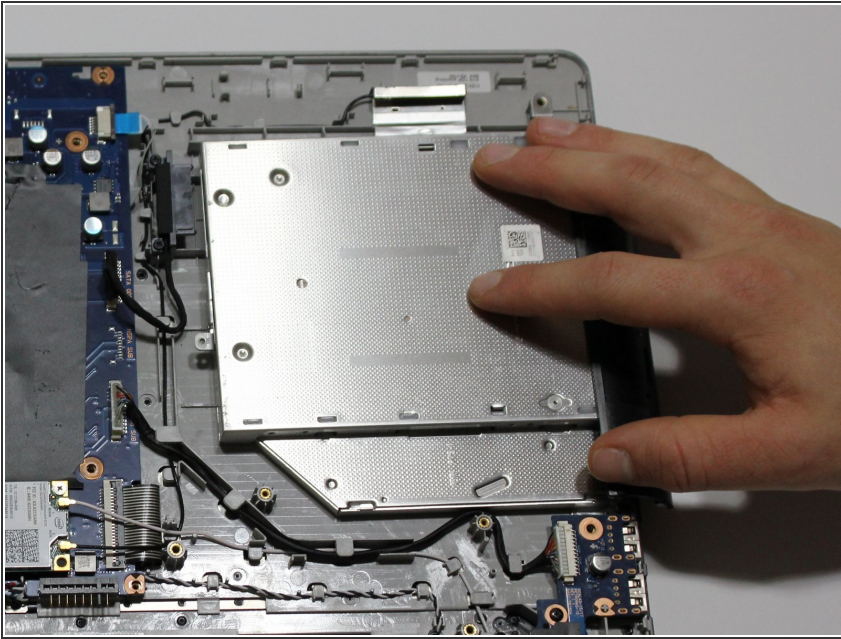
- Using the J1 Japanese Industrial Standard screwdriver, remove the thirteen 9.5mm screws from the panel that cover the bottom of the computer.

## Step 7



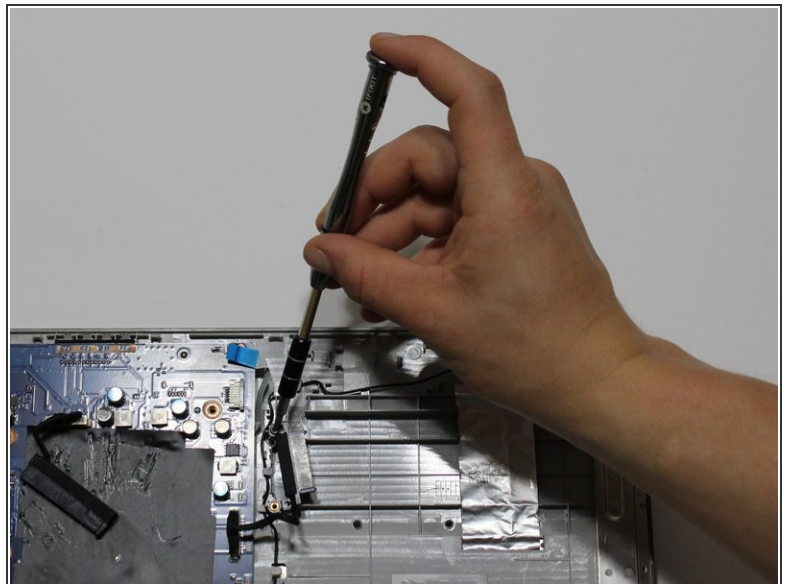
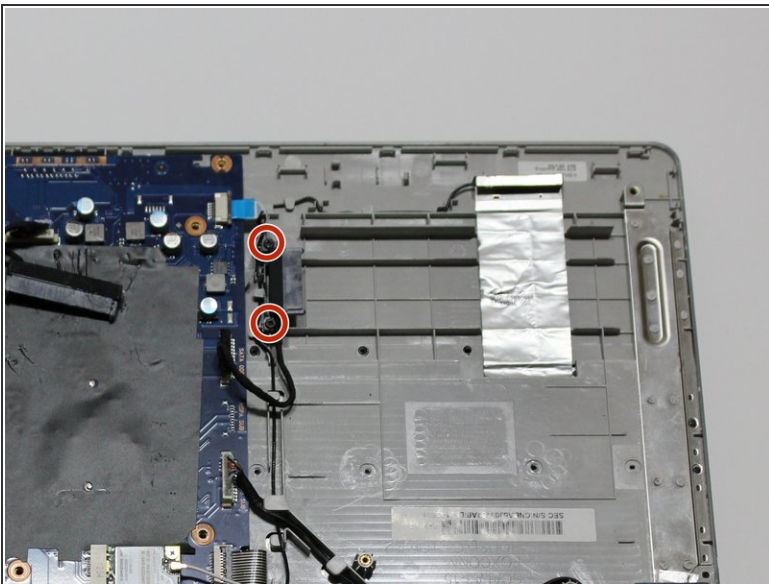
- Begin removing the computer casing by prying beside the disk drive with the iFixit opening tool and the spudger, working counterclockwise.
- Lift the panel from the computer.

## Step 8 — Disc Drive



- Remove the disc drive by pulling it towards the outside of the computer.

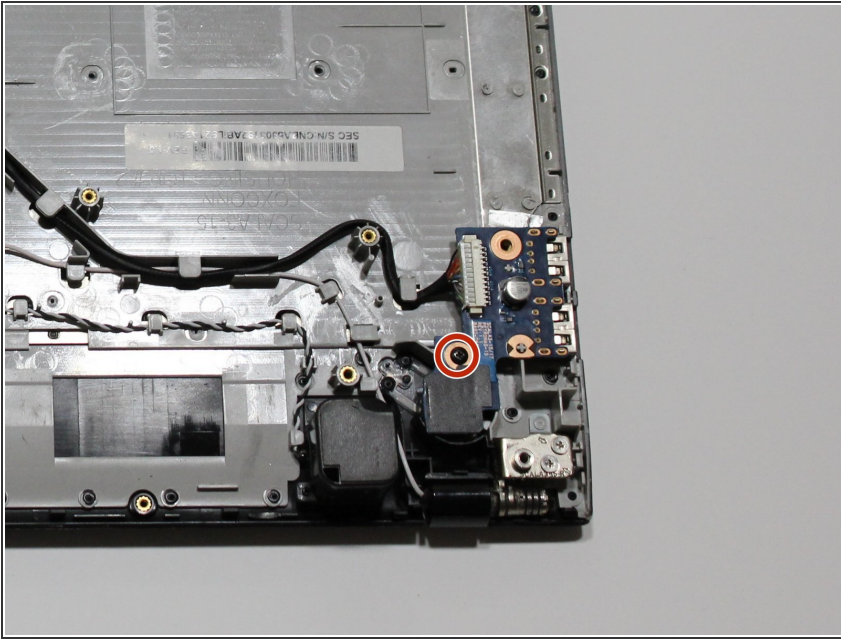
## Step 9 — Motherboard



- Using the J0 Japanese Industrial Standard screwdriver, remove the two 7mm screws that hold down the plug-in to the disc drive.

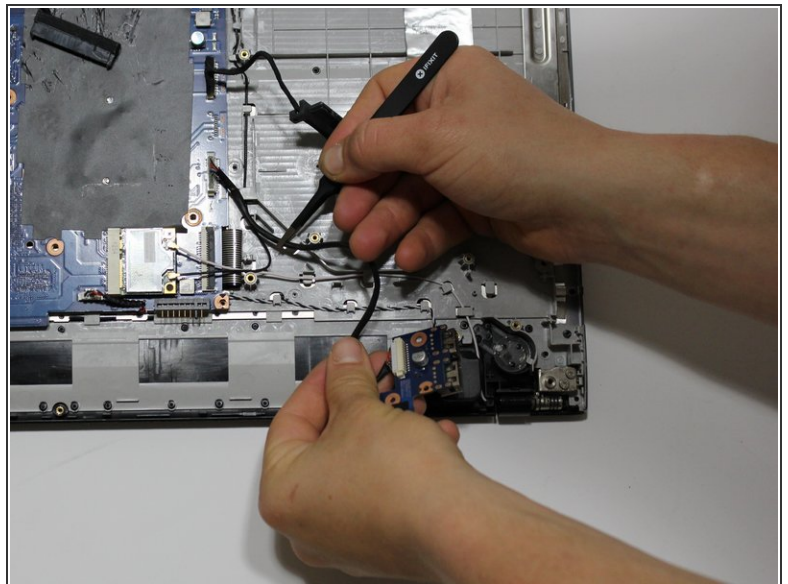
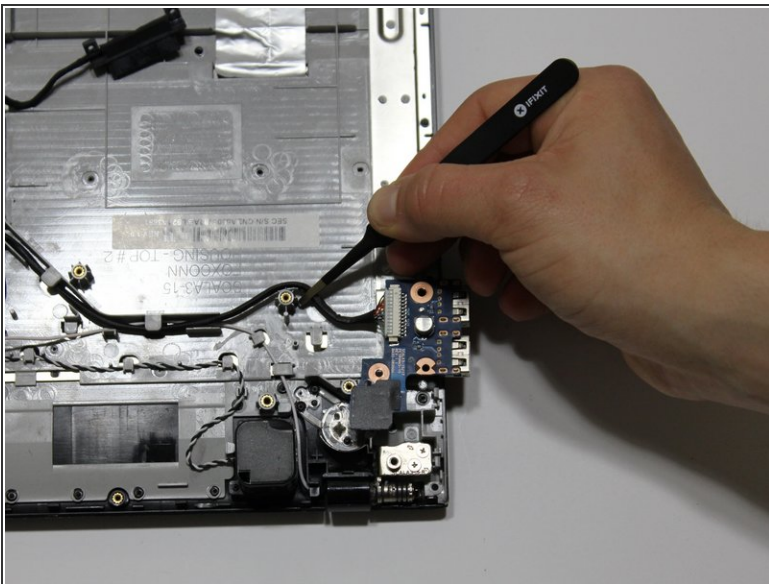


## Step 10



- Using the J0 Japanese Industrial Standard screwdriver, remove the 3.5mm screw from the chip connected to the USB ports.

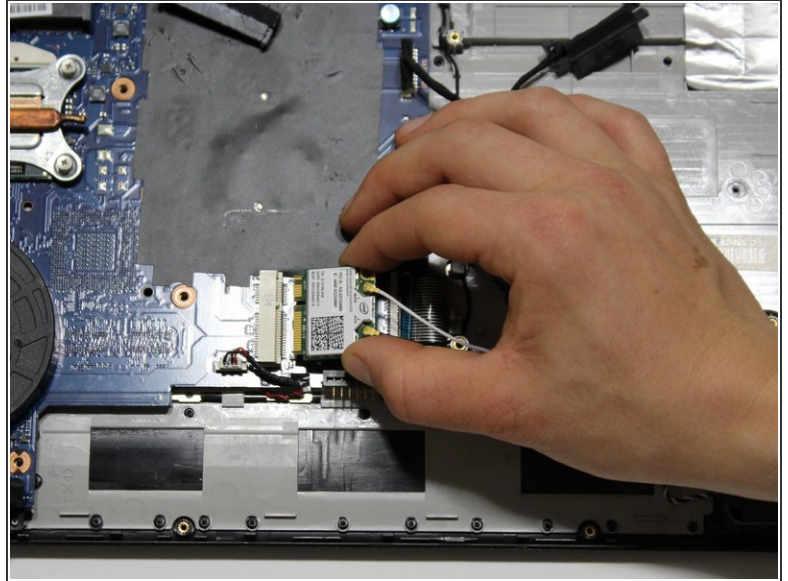
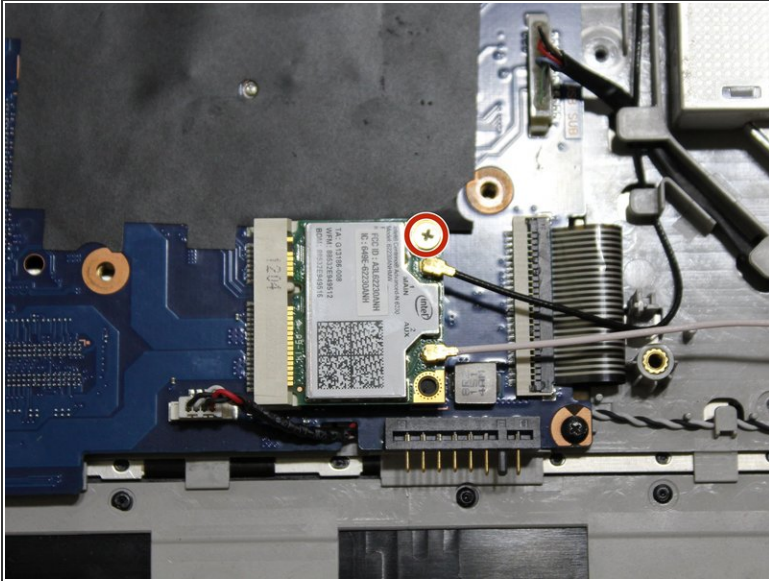
## Step 11



- ⚠ Using the tweezers, gently pry up the chip and ports, and unthread the wire from its holders, without crimping the wires.

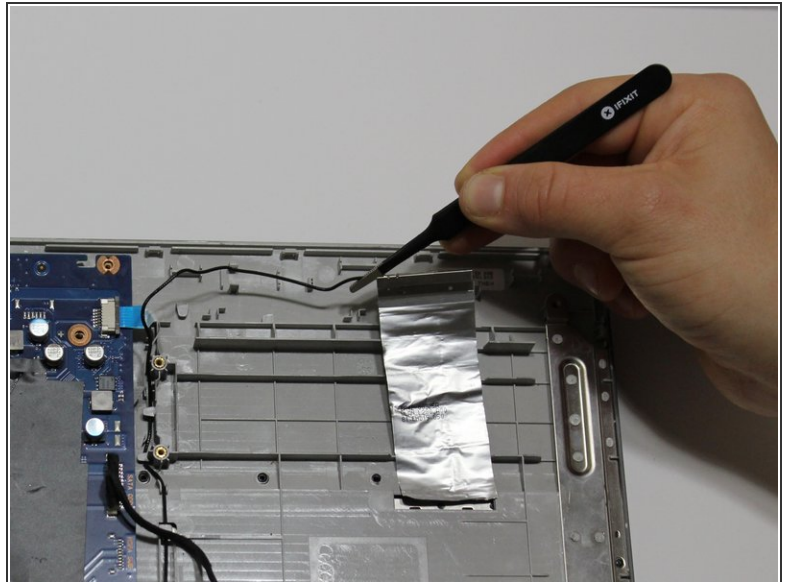
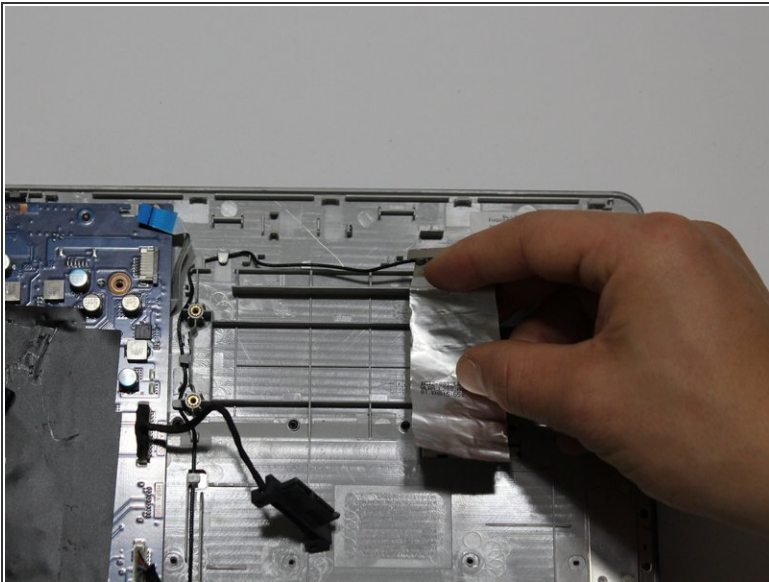


## Step 12



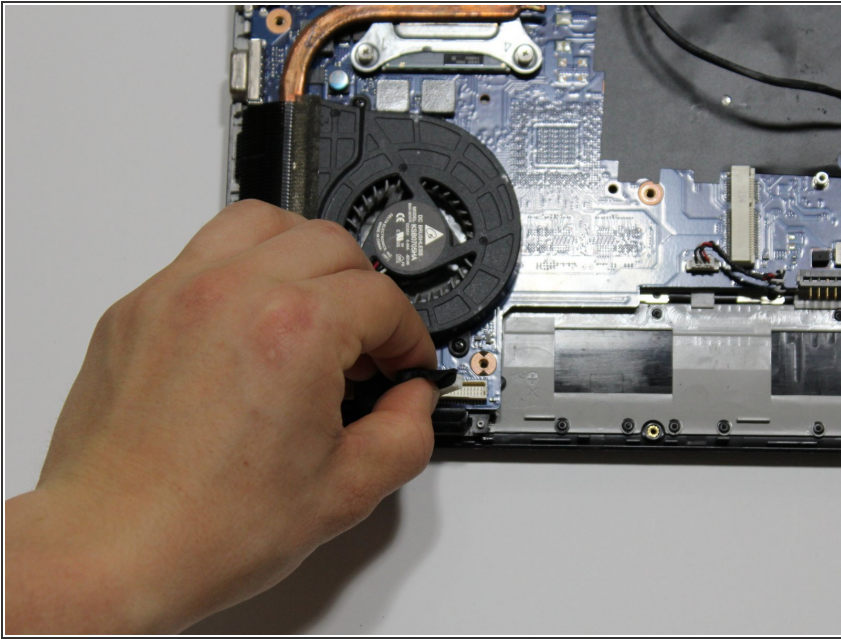
- Using the J0 Japanese Industrial Standard screwdriver, remove the 4.5mm screw holding down the chip next to the power prongs where the battery connects.
- Gently pull the chip from its connector.

## Step 13



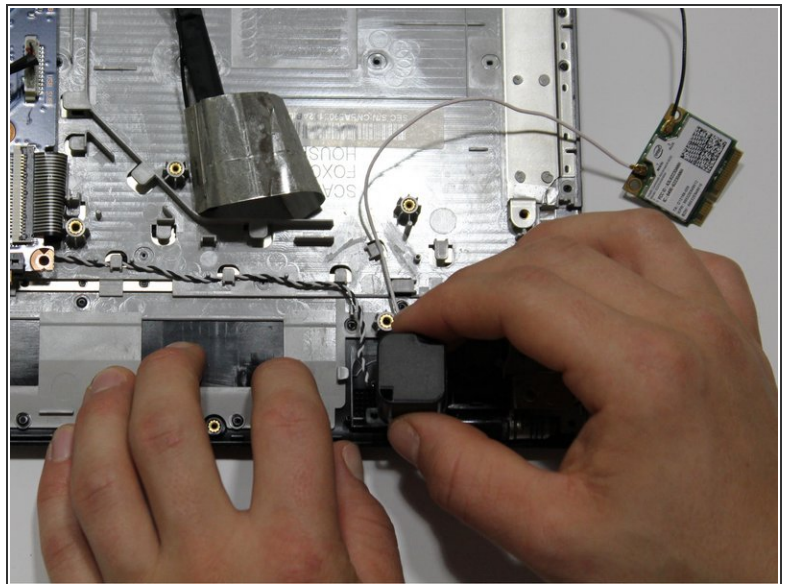
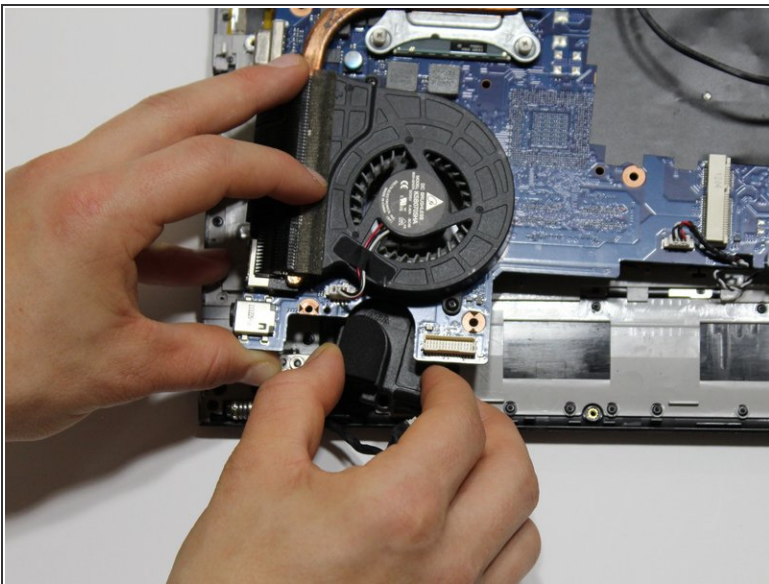
- ⚠ Gently pull up the aluminum strip from the top right corner of the computer and unthread the wire from the holders using the tweezers, without crimping the wire or tearing the aluminum.

## Step 14



- Disconnect the wire screen connection from its port by pulling upwards.

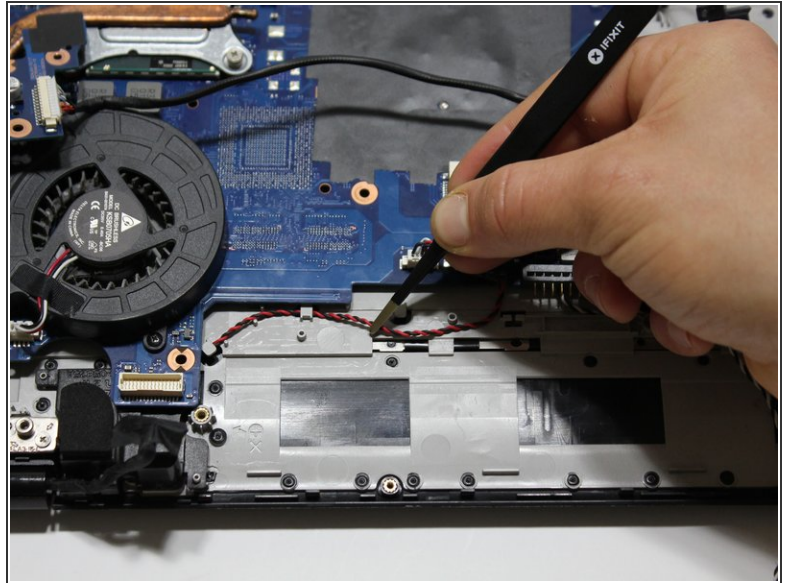
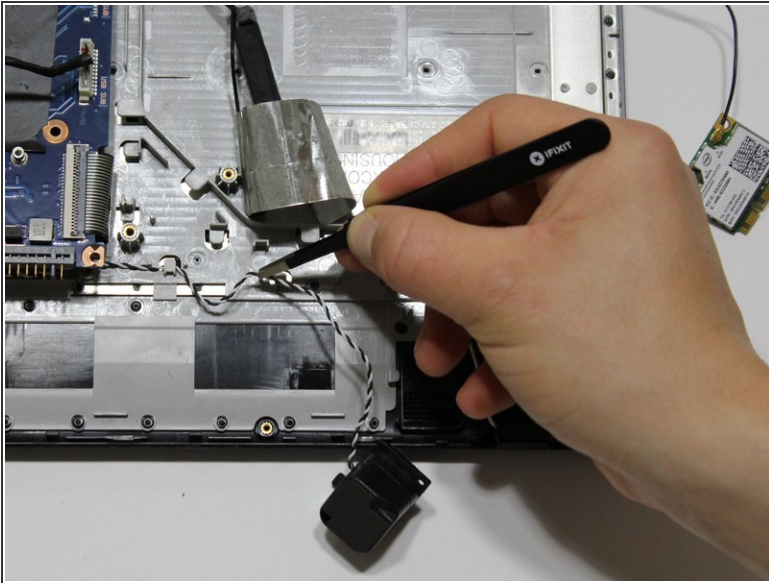
## Step 15



- Gently pull up the speaker towers from either end of the computer.

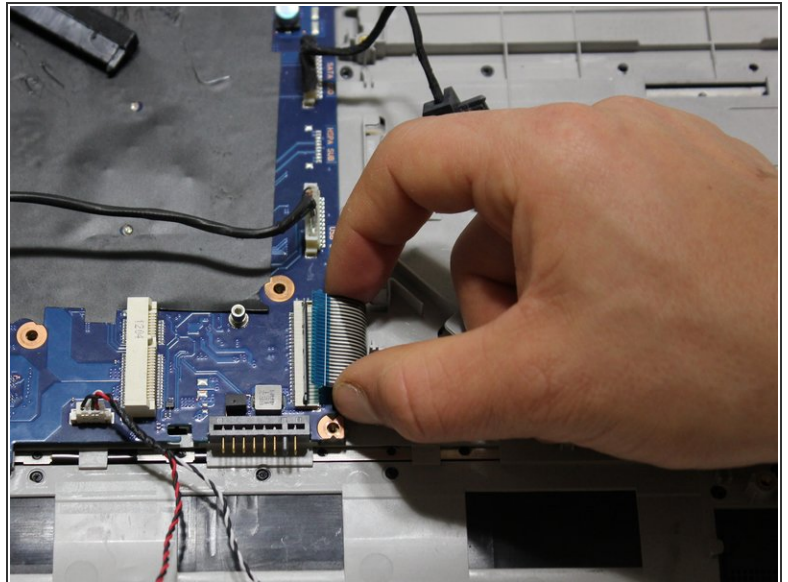
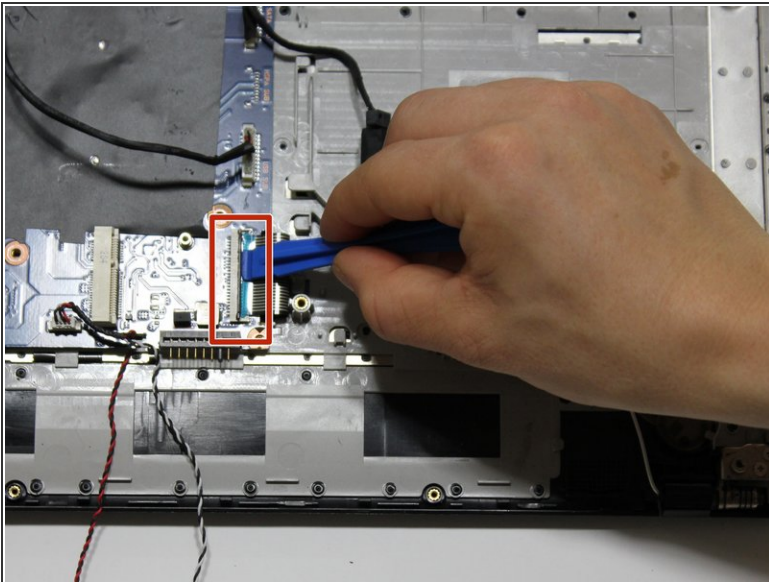


## Step 16



- Using the blunt tweezers, unthread the wires that connect the motherboard to the speakers from their holders, without crimping the wires.

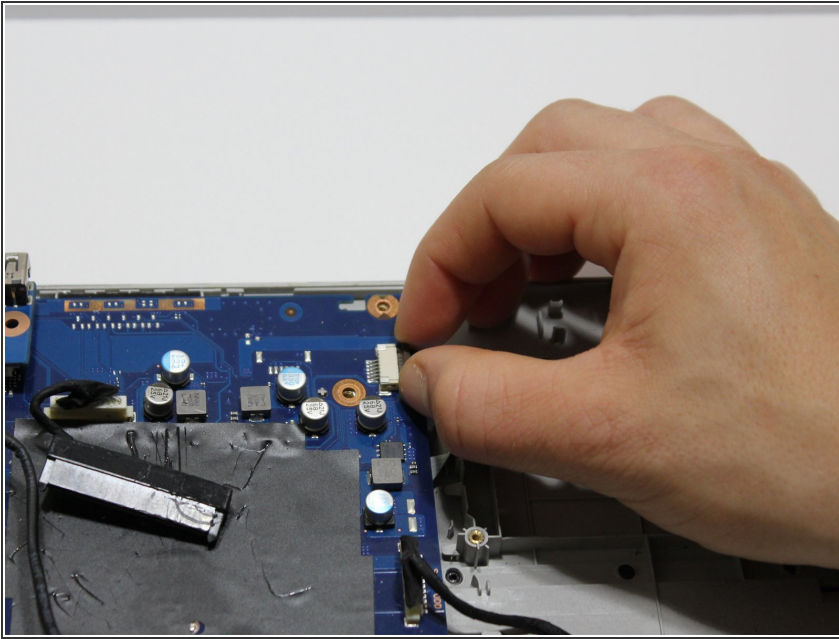
## Step 17



- Using the iFixit opening tool, gently pry up the plastic clasp that holds the keyboard power circuit down, and pull out the strip from the connection.

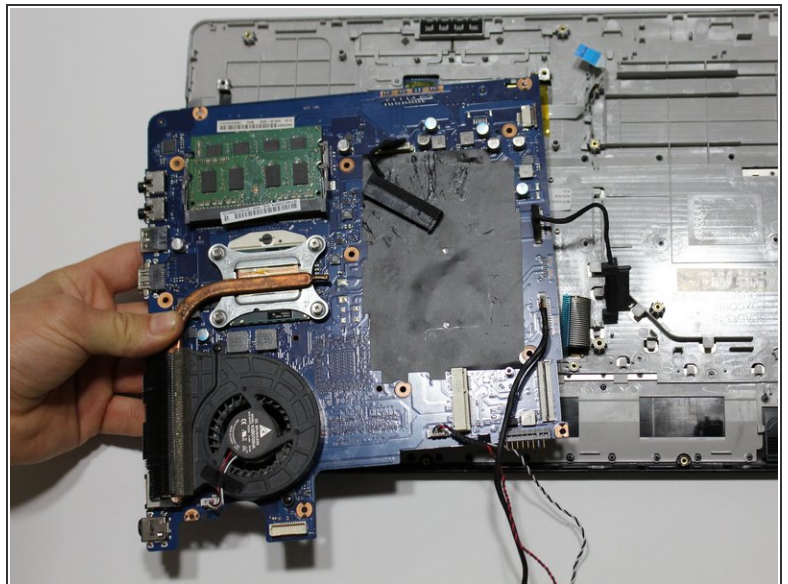
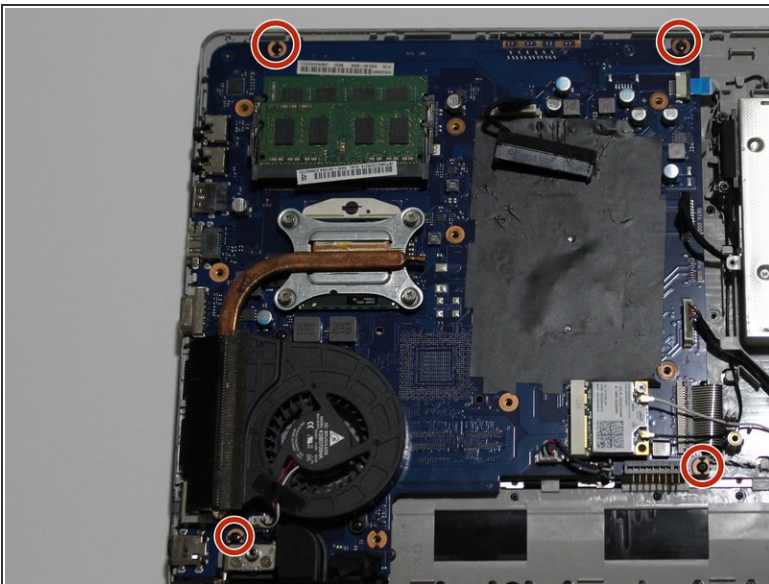


## Step 18



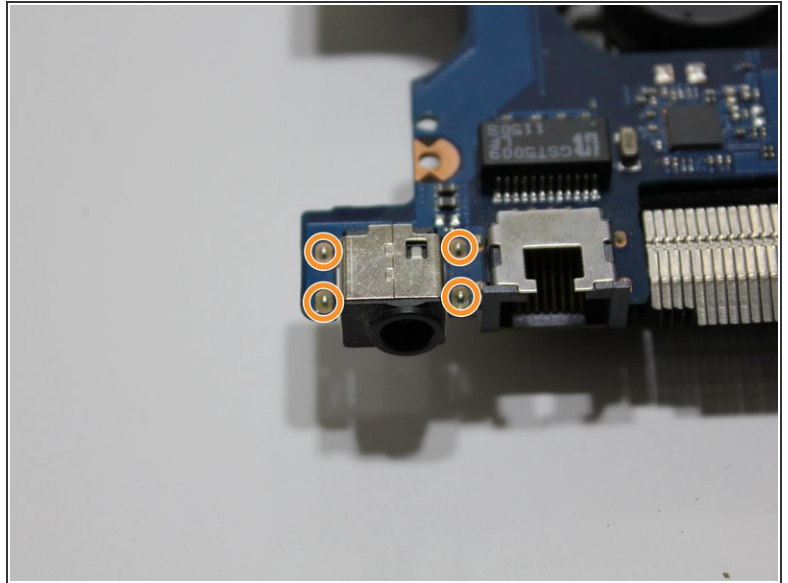
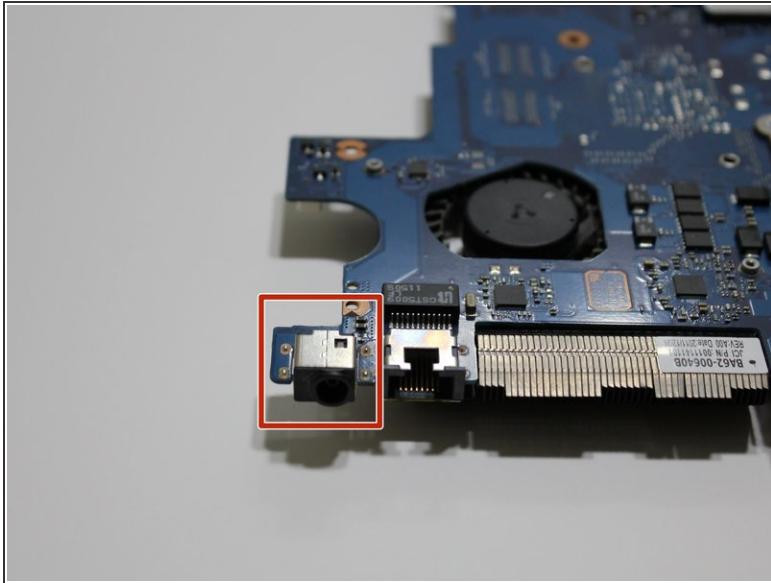
- Pull out the plastic cover to release the Kotl strip, then pull out the strip.

## Step 19



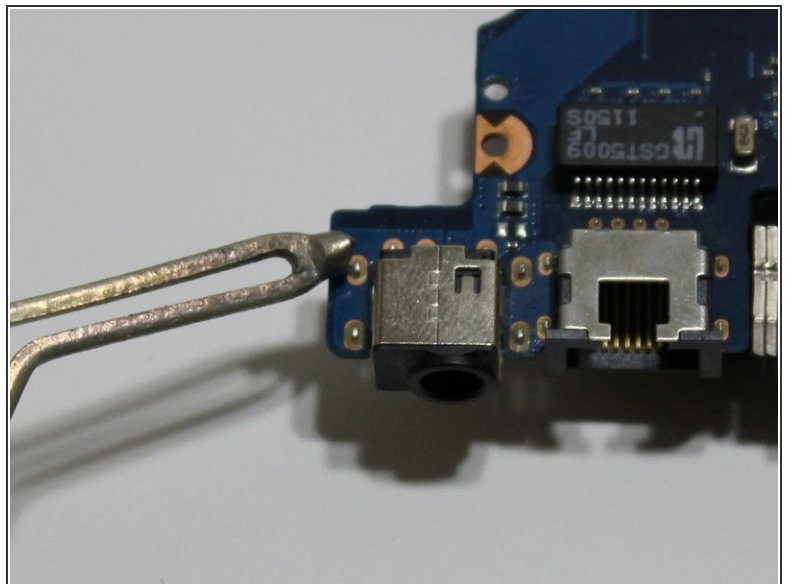
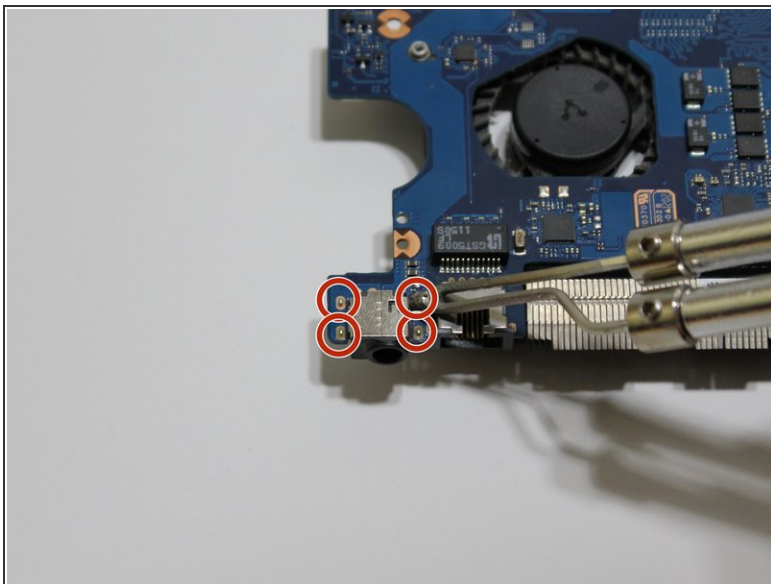
- Using the J0 Japanese Industrial Standard screwdriver, remove the four 4.5mm screws from the corners of the motherboard.
- Lift the motherboard from the computer.

## Step 20 — AC DC Powerjack



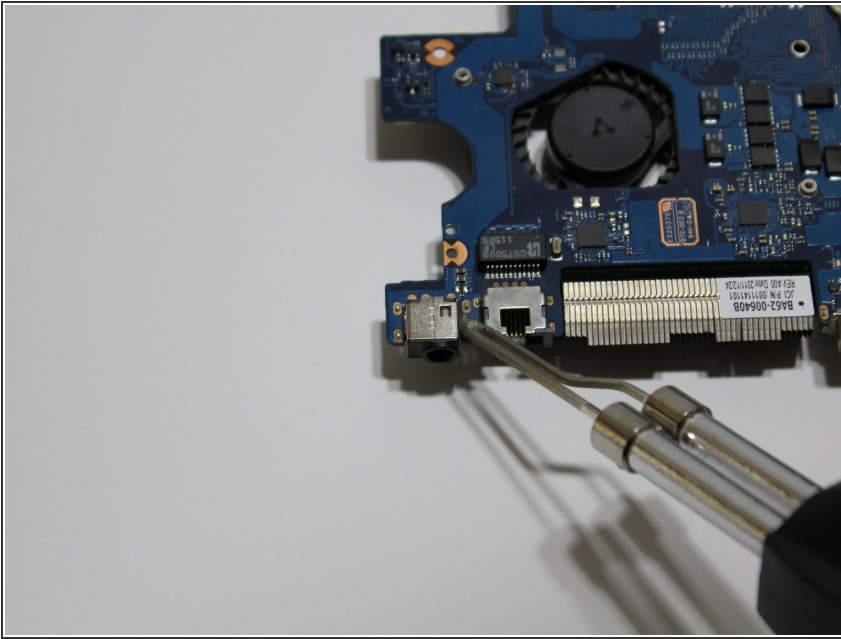
- Locate the power jack on the corner of the motherboard.
- Locate the four connectors that hold the power jack to the motherboard.

## Step 21



- Using the Soldering Station, remove the power jack from the four connectors.

## Step 22



- ✦ Solder the new power jack in place by reattaching the four connectors.

After soldering the new power jack in place, reassemble your device by following these instructions in reverse order.