



# Mercedes Benz W123 Manual Mirror

## Disassembly

A guide to tear down, disassemble, and service Mercedes Benz W123 driver side manual mirror.

Written By: Carlos



---

# INTRODUCTION

This guide is useful either to replace, service or repair Mercedes Benz W123 manual mirrors

---



## TOOLS:

- [Destornillador plano pequeño](#) (1)
  - [New Item](#) (1)
  - [Trim removal tool kit](#) (1)
-



## Step 1 — Remove the adjustment bracelet lock



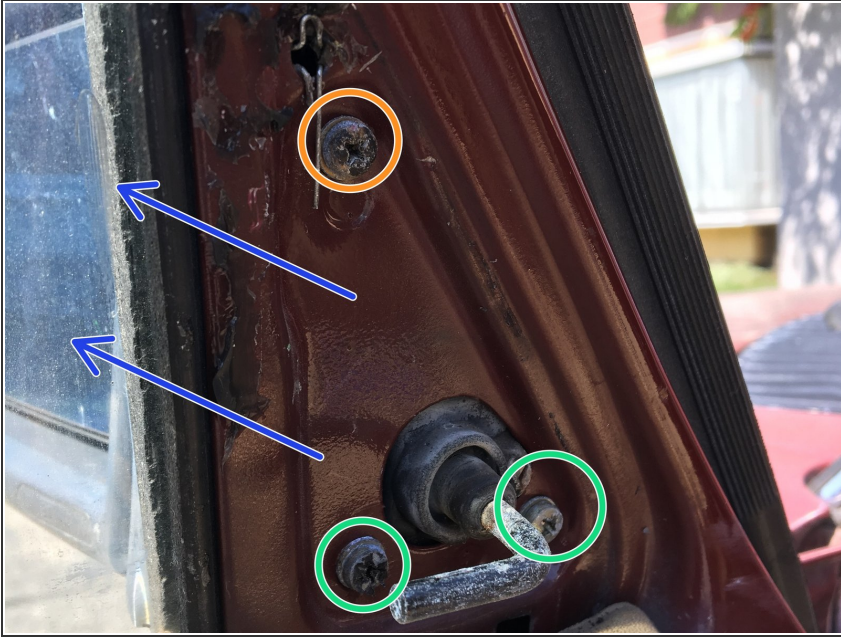
- First, we have to remove the adjustment bracelet lock. To do so, use a small, flat head screwdriver on the lock grooves, then gently push towards the door.
- Then, after the lock has moved all the way to the end, place it on a safe place so it doesn't get lost.
- Once the lock has been removed, slide the bracelet to the left, parallel to the door.

## Step 2 — Remove the plastic cover



- Now, with a plastic spudger, opening tool or a flat head screwdriver try to get between the plastic cover and the frame of the door, then, carefully pull apart both elements. **NOTE THAT THE PLASTIC IS FRAGILE AND IT IS HELD IN PLACE BY A PLASTIC RIM WITH A LITTLE LOCK. IF YOUR CAR WAS PREVIOUSLY OWNED, CHECK THAT THE COVER HASN'T BEEN GLUED.**
- Lift up the cover and turn it to the right, then remove it, **be careful with the staples that lock with the frame**

### Step 3 — Remove the mirror



- Remove the 3 Philips screws that hold the mirror in its place. **It's best if you remove the ones located in the bottom first, then, holding the mirror, remove the last one. The idea is to avoid the mirror from falling to the ground.**

## Step 4 — Remove the Crystal



- Now, with the adjustment rod all the way to the right, introduce a plastic tool, or a taped screwdriver and gently pry open. **The mirror has a socket where a round shaped pin is held in place.**
- Once the socket has been separated from the pin, lift the mirror pulling in diagonal/ upward movement against the base to remove the mirror from the adjustment rod, marked in the blue rectangle.
- Wipe off all the dirt inside. Lubricate the spring and grease both the regulator and the metallic pin. **At this point, if your mirror isn't broken, you can reassemble everything, following these steps in reverse order.**



## Step 5 — Complete disassemble (for spare parts, paint or change the cover)



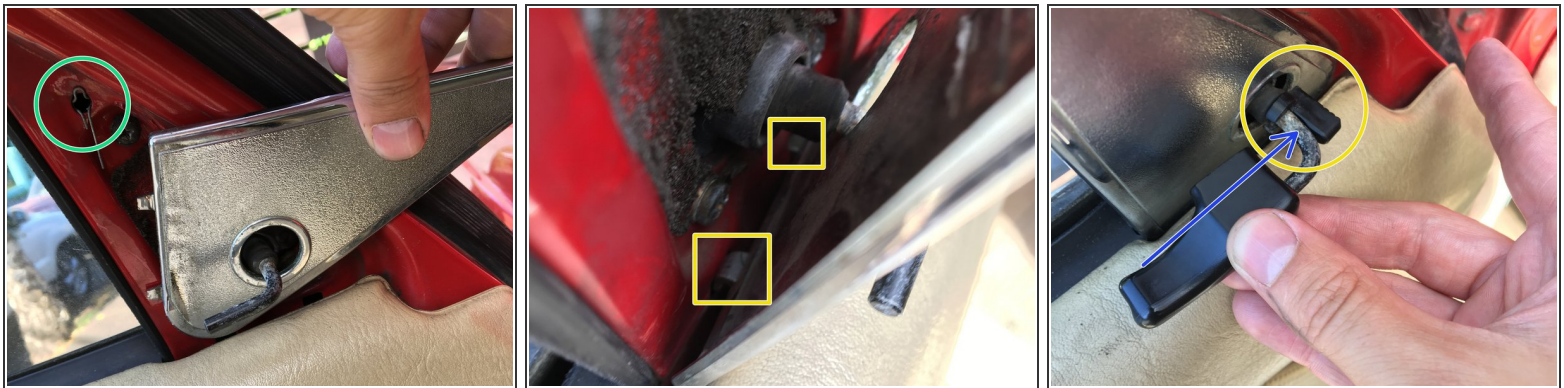
- To disassemble the mirror and all its components, remove the two Phillips screws indicated. Place a plastic tool or a screwdriver with tape between the black aluminum border, and the rubber that separates the cover from the chrome end, prying open the outer contour. **Remember that it might be difficult because of all the accumulated dirt**
- Once separated the aluminum body from the chrome cover, proceed to remove the rubber gasket, you can use warm water and soap. Once completely separated, you can clean, paint or replace all the elements.
- On this specific case, we proceeded to paint the black aluminum border to tart up the mirror. Also the chrome was polished and the rubber gasket replaced from another mirror we had.

## Step 6 — Assembly and Installation



- To reassemble follow the instructions in reverse order: place the rubber gasket (1) in the chrome cover (2), assemble with the black aluminum body (3), fasten the Phillips screws (4), slide in the mirror (5) to the arm and push firmly to secure the metallic pin in the plastic socket.

## Step 7 — Completion



- Once the mirror has been fastened with the three screws (using locktite or any other thread lock), place the plastic door cover. **Make sure that the little hooks are in place inside the frame of the door**
- Now that the hooks are secured, firmly press the plastic pin so that it locks in the respective metallic orifice.
- Place the lever in the manual control and slide the plastic handle. **Fasten the control with a flat head screwdriver or a plastic tool.**



## Step 8 — Enjoy your mirror!



- Enjoy your restored mirror, you can compare the before and after!

Hope this guide is useful! Let's get those hands dirty!