



LG V30 Display (screen only) Replacement

Written By: Patrick



TOOLS:

iFixit Opening Picks (Set of 6) (1)

Phillips #00 Screwdriver (1)


Heat Gun (1)


Spudger (1)

Step 1 — Display (screen only)



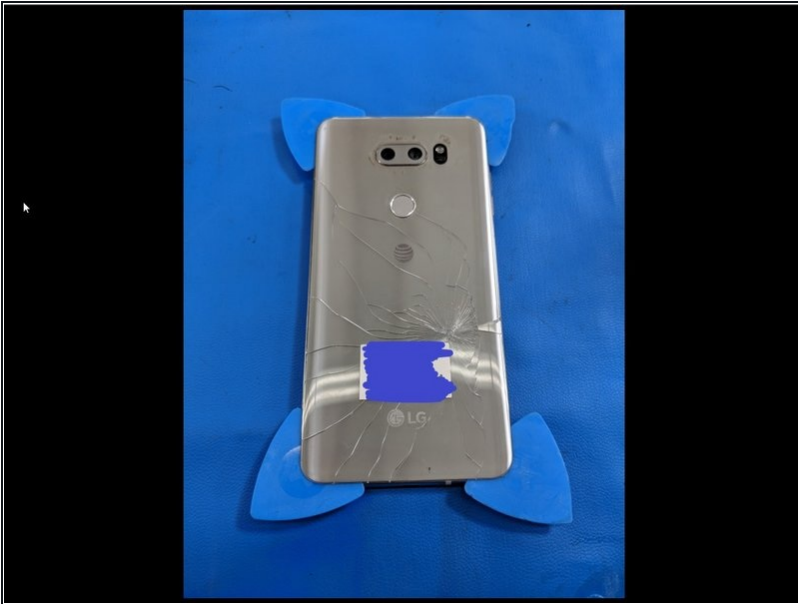
- The back of the phone has adhesive around all edges, as well as additional adhesive shown in yellow.

 **Be careful around the cable for the fingerprint sensor (shown in red).**

 The fingerprint sensor is attached to the back panel.

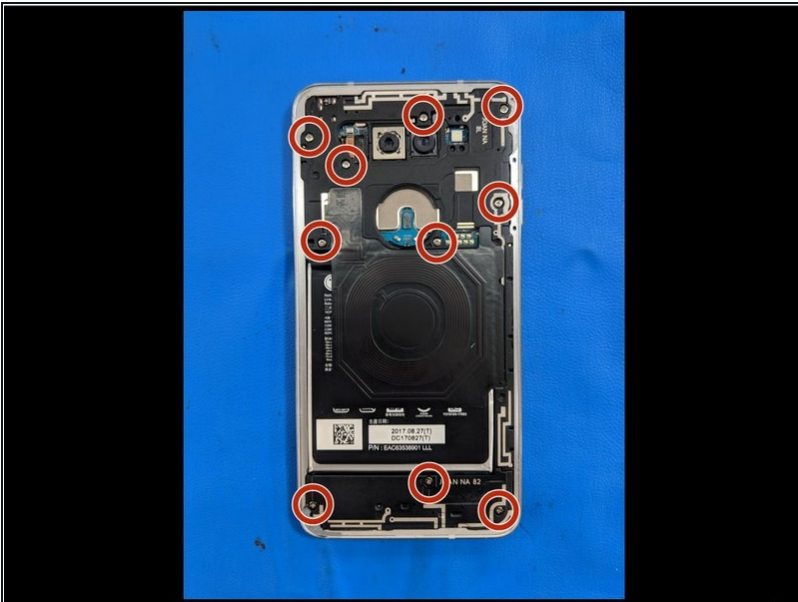
- Start by heating the bottom of the phone and carefully using a metal spudger or a suction cup to lift the glass panel up enough to insert an opening pick.
- Heat up each edge and move picks towards the top of the phone, leaving one pick inserted in each corner.

Step 2



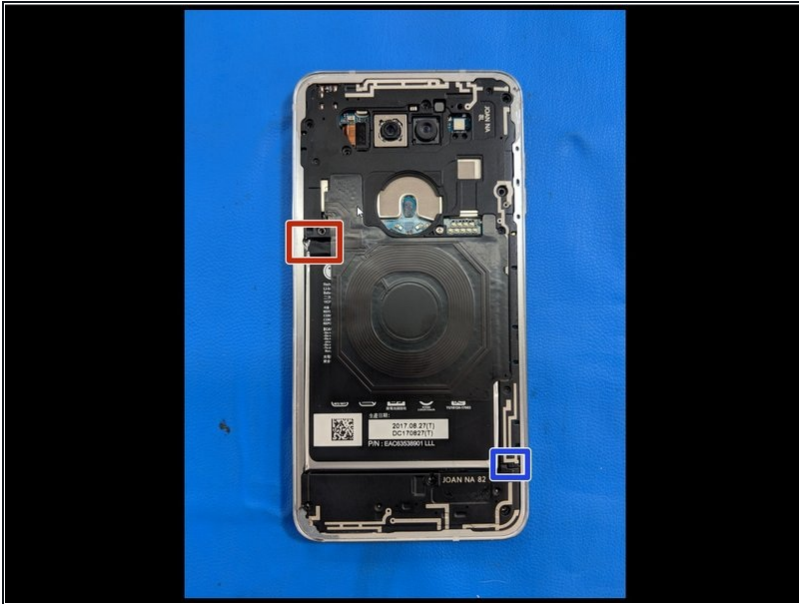
- Gently but firmly remove the back glass.
- ① There is weak adhesive around the fingerprint sensor.

Step 3



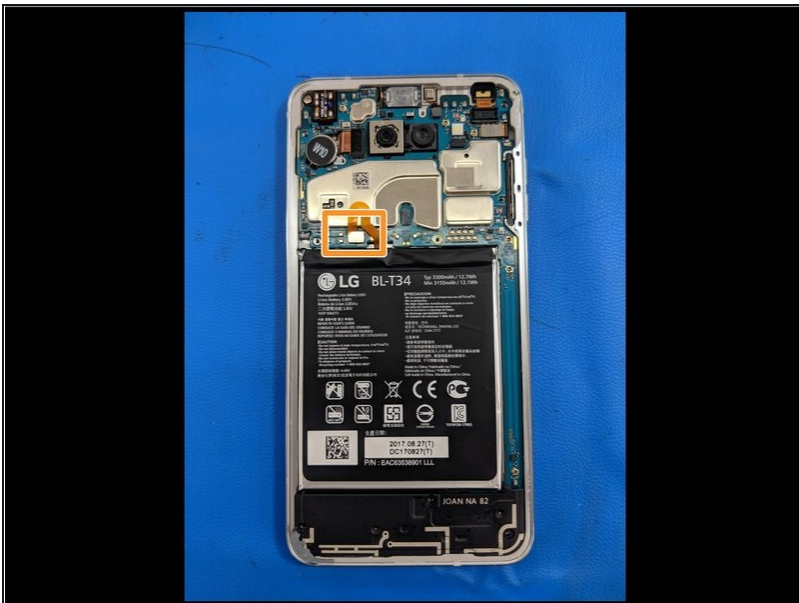
- Remove 10 Philips screws.

Step 4



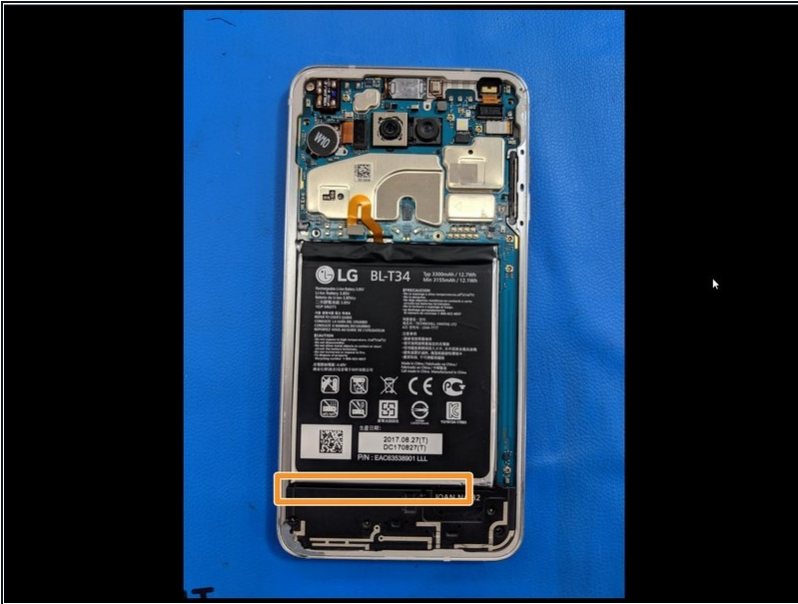
- To remove the plastic frame, insert the tip of a spudger into the access point indicated in red and disengage the clips.
- Continue to disengage the clips by moving the spudger up the left side of the phone, around the top, and down the right side.
- Once the top half of the frame is freed, remove the part by wiggling it up and out from underneath this tab.

Step 5



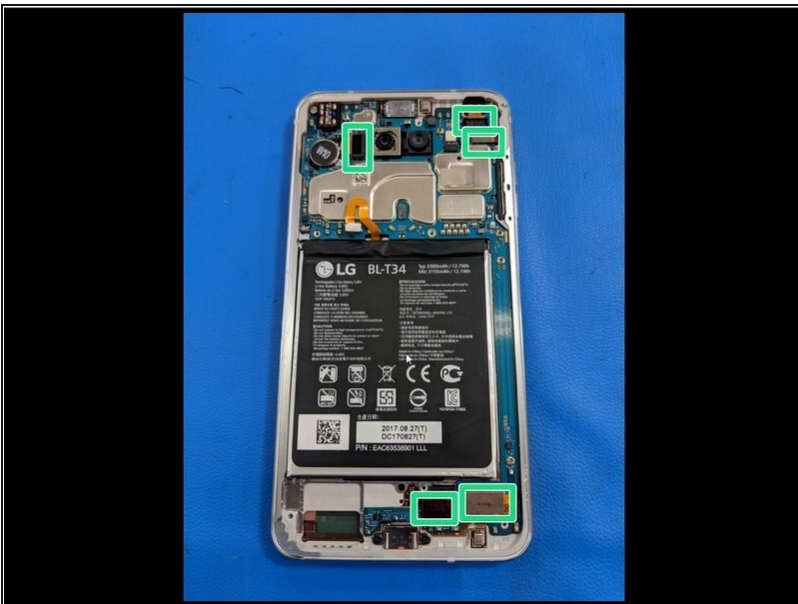
- Disconnect the battery. While holding the motherboard down, pry up on the battery connector.

Step 6



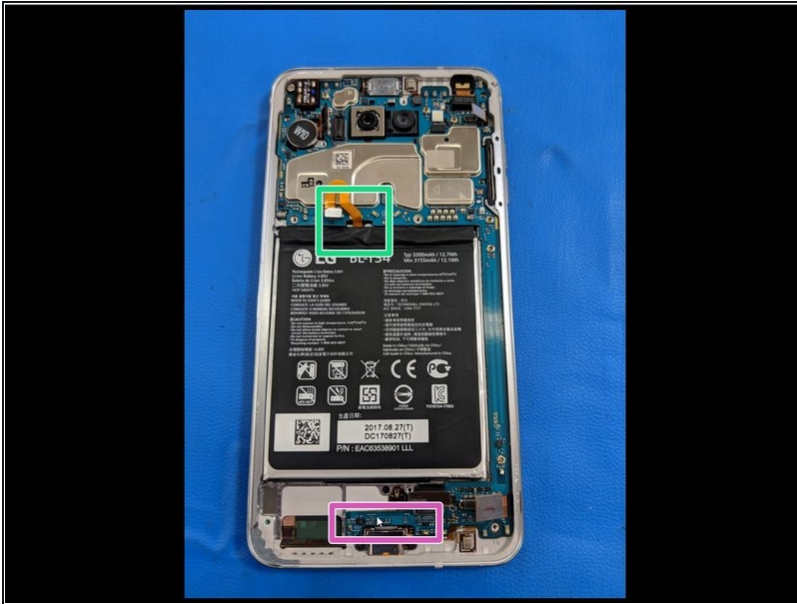
- Remove the bottom plastic frame part by inserting the flat end of a spudger under the top edge and disengaging the remaining clips.
- ⓘ This part also contains the bottom speaker.

Step 7



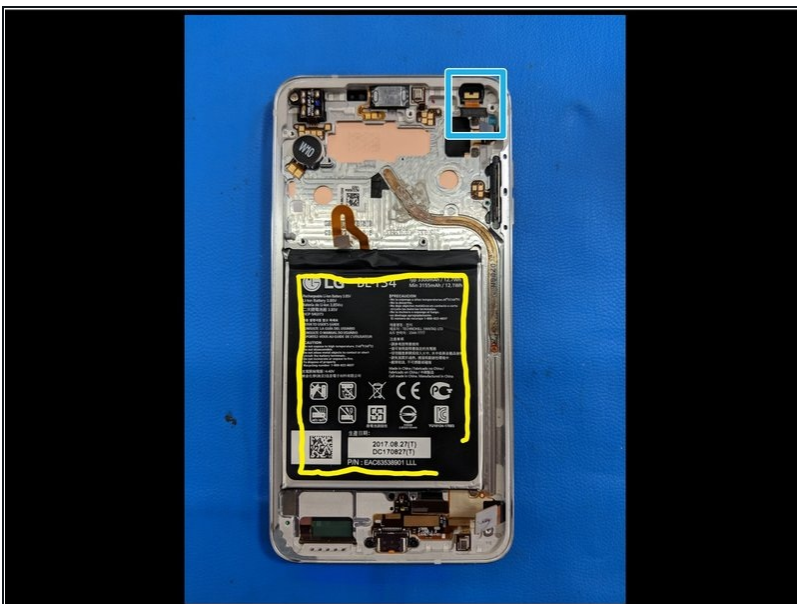
- While holding the motherboard down, disconnect 5 ribbon cable connectors from the motherboard.

Step 8



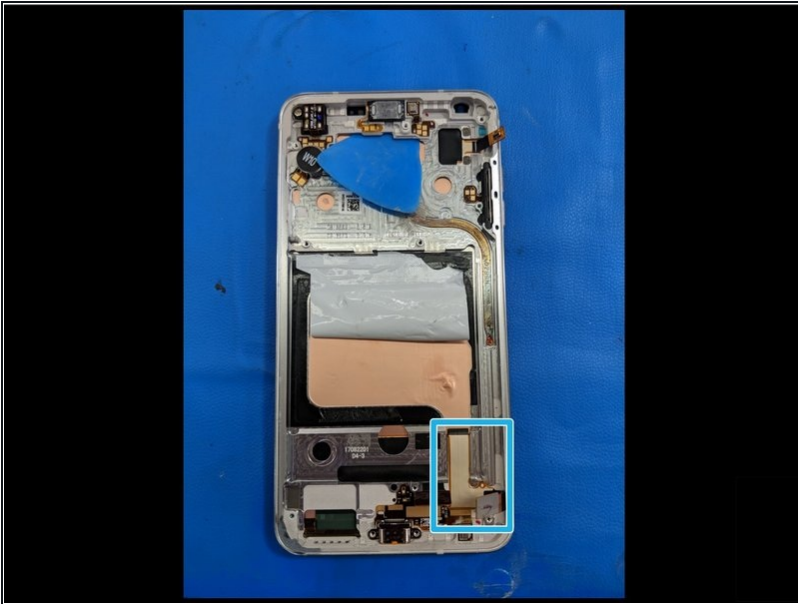
- Insert the pointed end of a spudger here and carefully lift the left edge of the motherboard from the frame.
- Continue to lift the top half of the motherboard out of the frame, moving ribbon cable connectors as necessary.
- ⚠ Be careful to not bend the narrow portion of the motherboard.
- There is additional adhesive holding the bottom portion of the motherboard in place.

Step 9



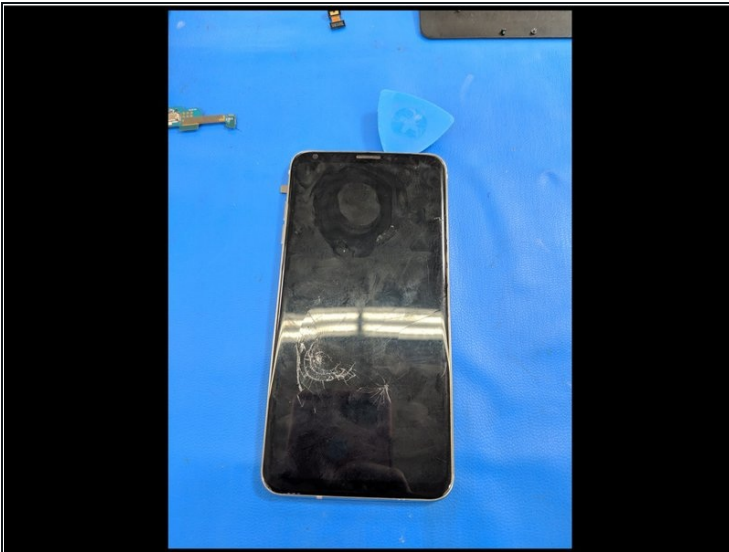
- Remove the battery by inserting a [plastic card](#) or opening picks under the bottom edge.
- The adhesive runs around the edges of the battery.
- Lift the front-facing camera out of the frame.

Step 10



- Insert an opening pick underneath the ear speaker between the screen and the frame of the phone.
- Use an opening pick to separate the adhesive securing the display cable to the frame.

Step 11



- Heat the top part of the phone and use a metal spudger to gently lift the display enough to insert an opening pick.
- Heat each side of the phone and use an opening pick to separate the display from the frame.
- Be sure to transfer the earpiece speaker grille to the new display if necessary.

To reassemble your device, follow these instructions in reverse order.

Be sure to clean traces of adhesive off of the frame to ensure optimal conditions for the new adhesive.