



# Sony Vaio SVE151G11L Display Replacement

A comprehensive guide to replace the Sony Vaio SVE151G11L display.

Written By: Azka Khanani



---

# INTRODUCTION

This is a comprehensive guide to replace the Sony Vaio SVE151G11L display.

---



## TOOLS:

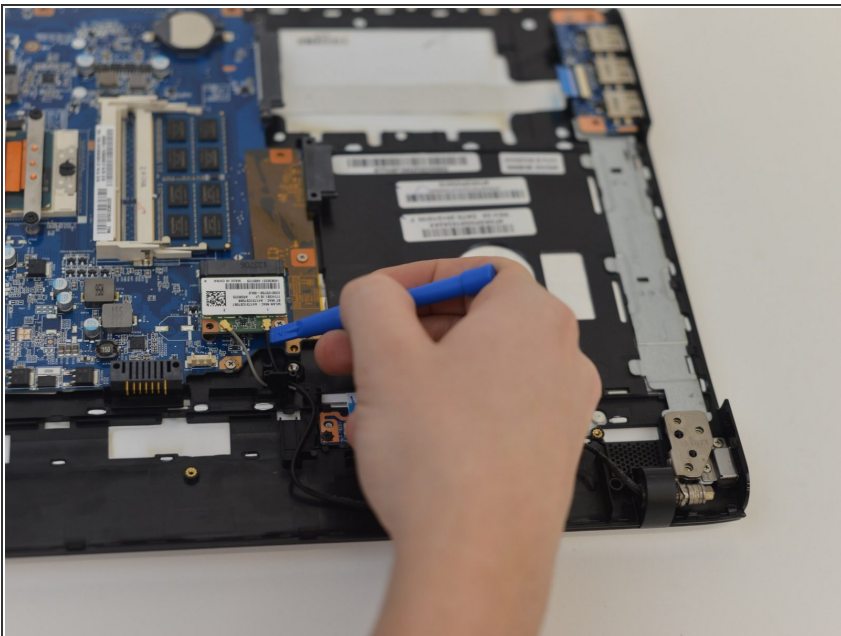
- [Phillips #0 Screwdriver](#) (1)
  - [iFixit Opening Tools](#) (1)
-

## Step 1 — Display



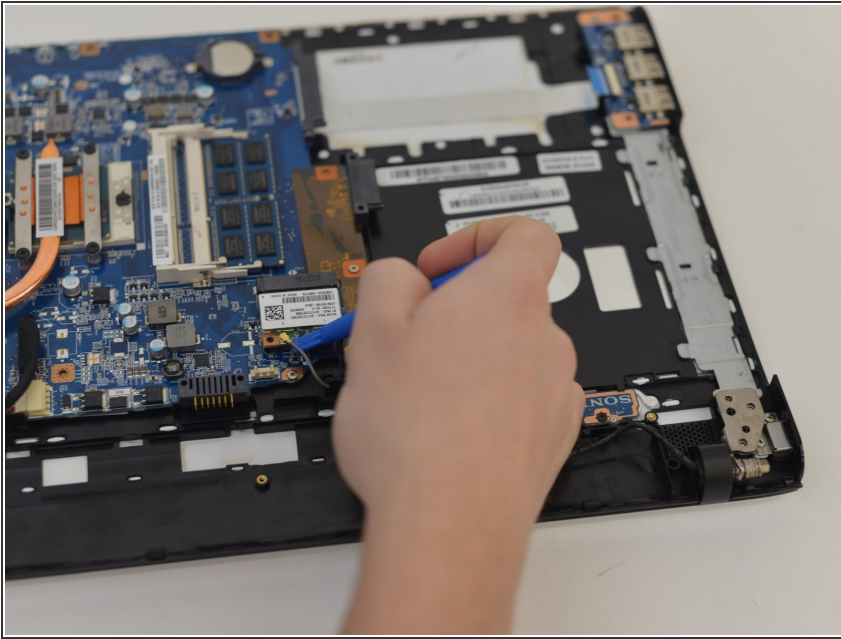
- Flip laptop over so the bottom is facing upwards.
- Remove bottom of laptop.

## Step 2



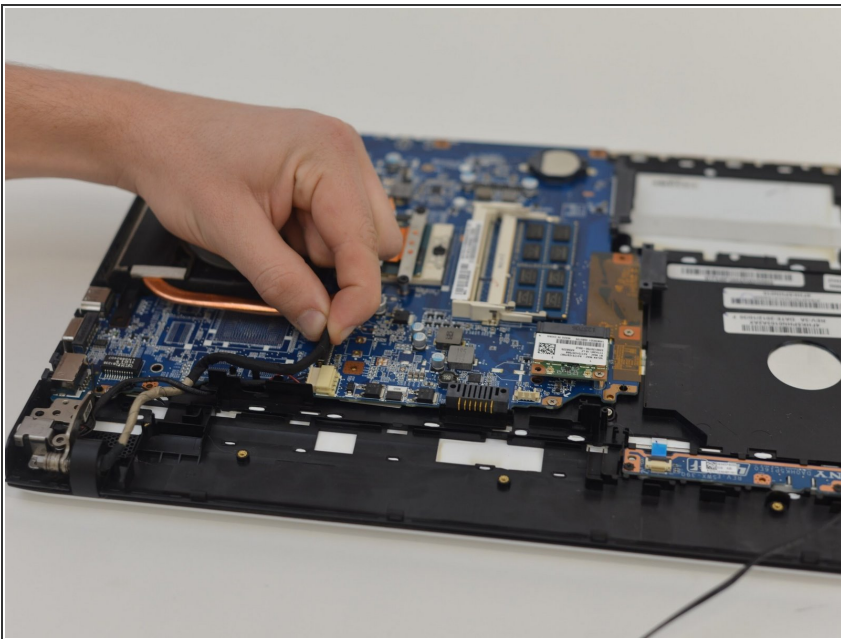
- Remove antenna wires attached to the WiFi card using a plastic opening tool.

## Step 3



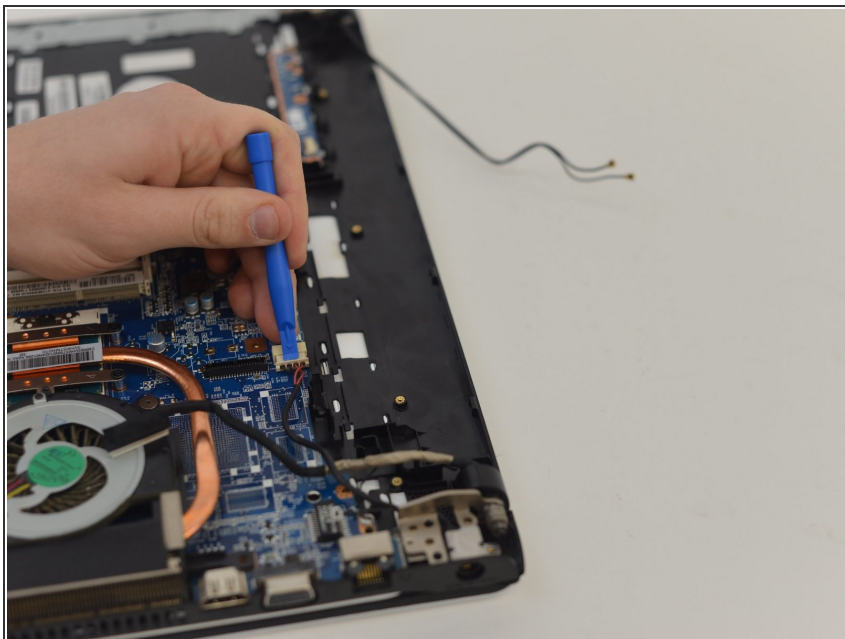
- Remove the other antenna wire.

## Step 4



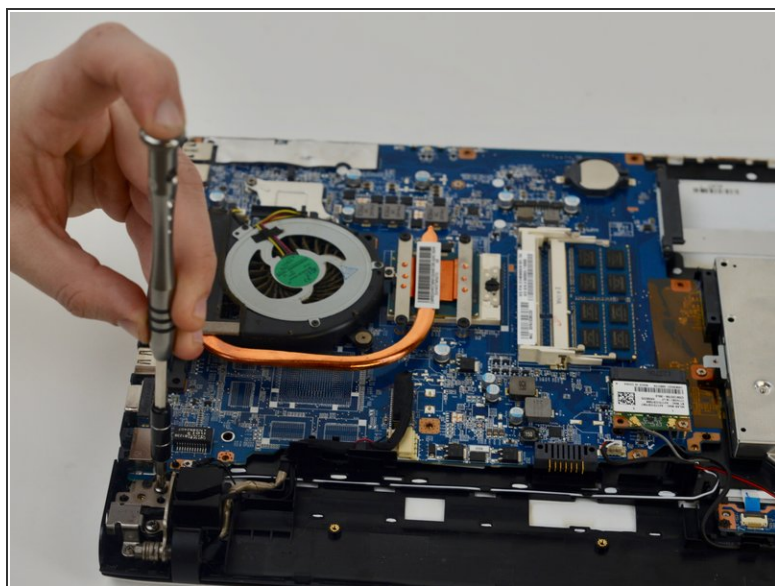
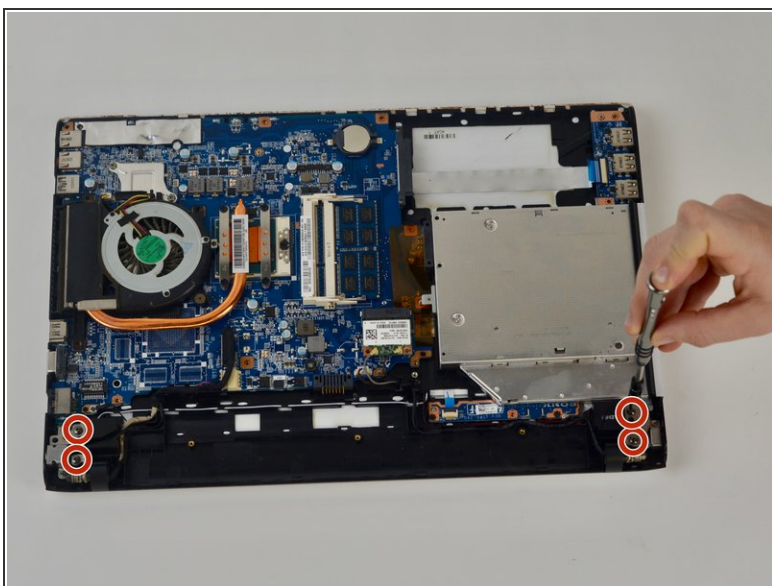
- Remove the display cable by pulling upwards.

## Step 5



- Remove the power display cable with a plastic opening tool by pushing outwards.

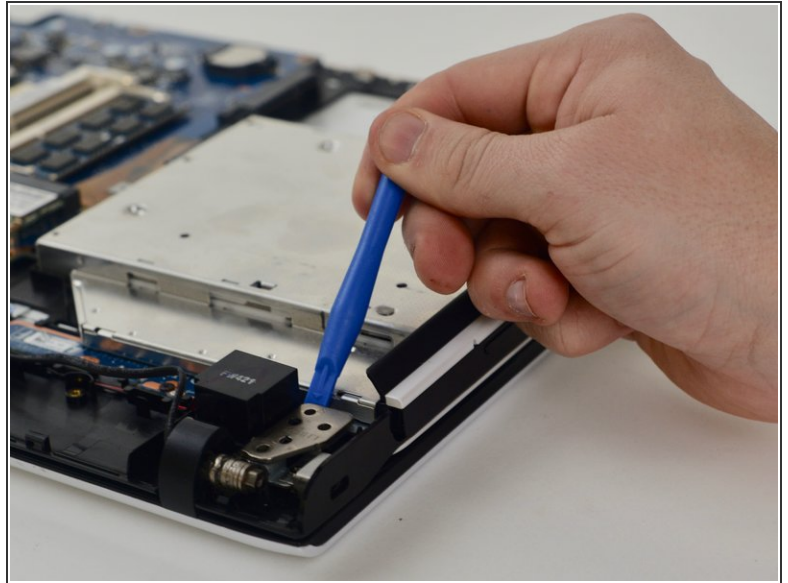
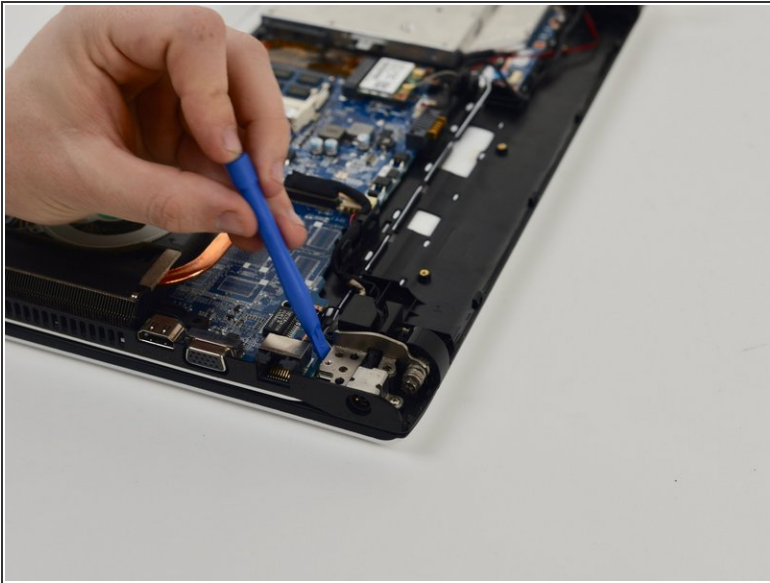
## Step 6



- Remove 4 hinge screws with a Phillips #0 screwdriver.

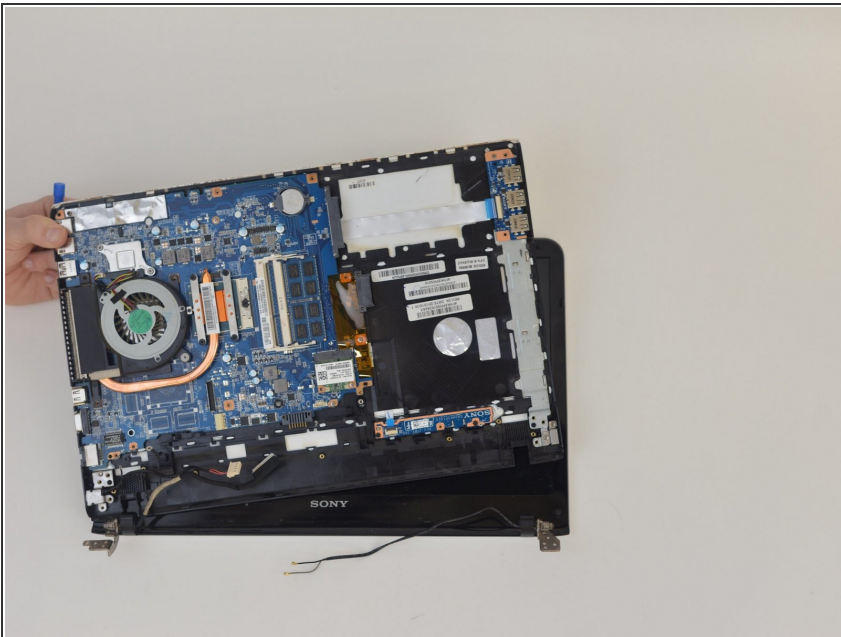


## Step 7



- Lift upward on the hinges with a plastic opening tool to release them.

## Step 8



- Separate the bottom of the laptop from the monitor.

## Step 9



- Completely detach screen from the laptop.

To reassemble your device, follow these instructions in reverse order.