



Acer Aspire 7741Z-4643 Wireless Card Replacement

How to replace the mini PCI-E card, also known as wireless card in your Acer Aspire 7741Z-4643.

Written By: Philip Matena



INTRODUCTION

Is your computer not connecting to the Wi-Fi? Consider using this guide to replace the wireless card in your device.



TOOLS:

- [Phillips #0 Screwdriver](#) (1)



PARTS:

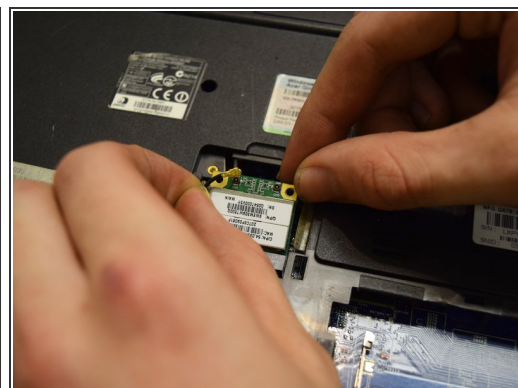
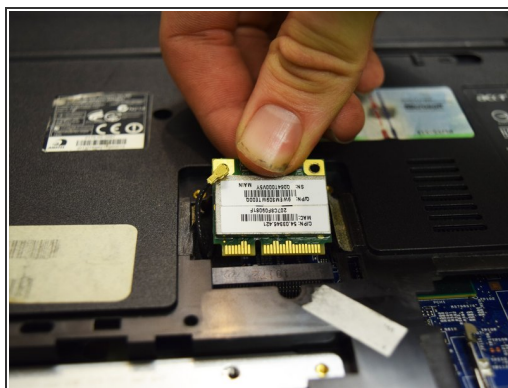
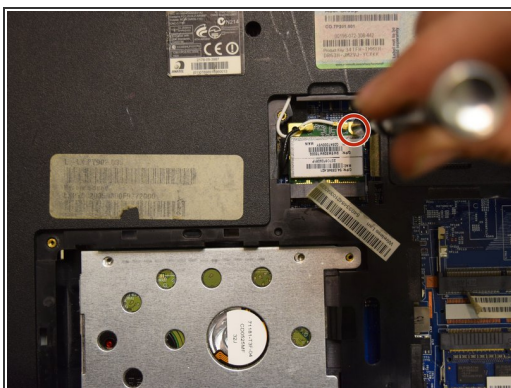
- [Wireless Network Card](#) (1)

Step 1 — Wireless Card



- Begin by unscrewing the four phillips #0 7.5mm screws on the plate on the underside. Remove the plate by lifting up.

Step 2



- Unscrew the one phillips #0 4.0mm screw at the top of the card in order for it to be removed.
- After the screw is removed, slide the card out. Remove connections to the terminals by pulling up on the connection carefully.

To reassemble your device, follow these instructions in reverse order.