



Asus X401A LCD Screen Replacement

A step-by-step guide to replacing a broken LCD panel for the new X401A Series laptops by ASUS.

Written By: Aaron Shields



INTRODUCTION

Replacing an LCD screen on these ASUS laptops isn't as hard as one might think. OEM replacement screens can be had at a good price from Laptopscreens.com:

<http://www.laptopscreen.com/English/mode...>



TOOLS:

- [Phillips #00 Screwdriver](#) (1)
- [Spudger](#) (1)



PARTS:

- [ASUS X401A Replacement Screen](http://www.laptopscreen.com/English/mode/ASUS/X401A/)
(<http://www.laptopscreen.com/English/mode/ASUS/X401A/>) (1)

Step 1 — LCD Screen



- Be sure to disconnect the battery and power supply before continuing.
- To remove the battery, two clasps must be disengaged on the underside of the laptop. One side is a standard switch, the other is spring-loaded.
- Slide the standard switch toward the center of the laptop. Hold the spring-loaded switch in the same position (pressed towards the center of the laptop) and, while depressed, disconnect the battery.

Step 2



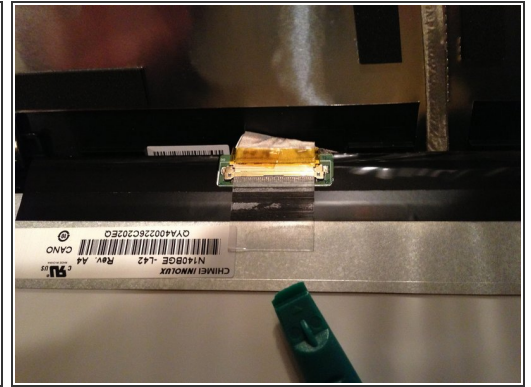
- The bezel is attached with screws at two points near the hinges, covered with black plastic squares
- Use a spudger, exacto knife, or whatever to remove the adhesive squares. Do it carefully, as they will be going back on at the end and we want them to be pretty.
- With the squares removed, use a #0 or #00 Philips screwdriver to back the screws out

Step 3



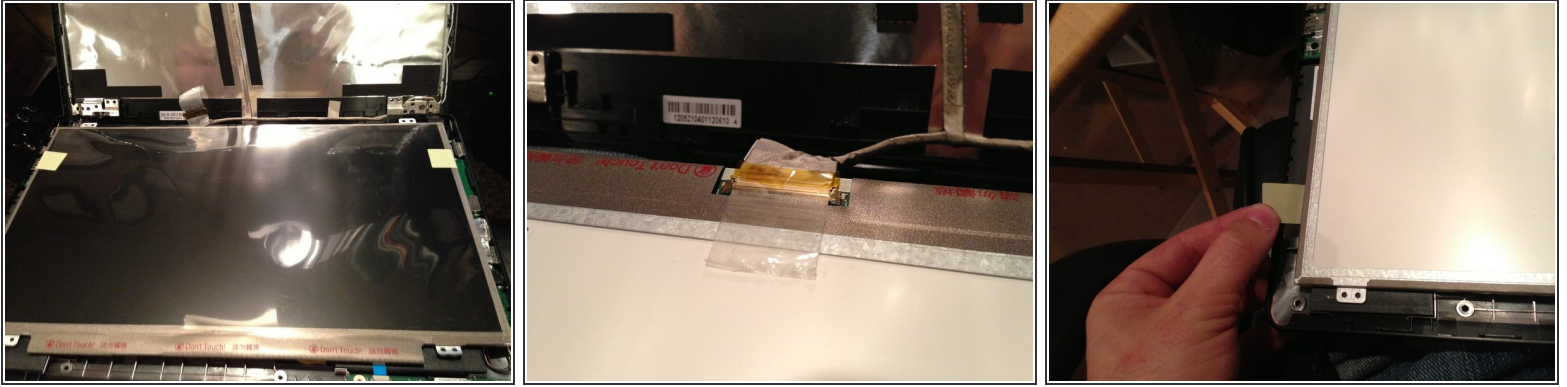
- Remove the front bezel using a spudger. The only tricky part here is at the hinges. Tipping the lid backward will reveal the seam on the hinge. Gently separate at the seam and lift the bezel away from the screen

Step 4



- Removing the bezel exposes four screws securing the panel. Remove these with a #00 Philips screwdriver
- Gently remove the panel and set it face-down on the keyboard. The cable plugs in at the base, and is secured with tape
- Carefully peel up the tape and unplug the broken panel

Step 5



- The new panel will have some protective plastic over the screen. It's a good idea to leave this on until just before the bezel goes on.
- Place the new panel in the same orientation as the old panel, face-down, on the keyboard. Reconnect the plug and secure with the existing tape (if it's in good enough shape), or a new piece.
- Before lifting up the panel and securing with screws, make sure that the tape holding the protective plastic is out of the way.
- To reassemble, just follow the guide in reverse order. Remember to remove the protective plastic sheet from the new panel before snapping the bezel back on.

To reassemble your device, follow these instructions in reverse order.