



# DualShock 4 Teardown

This guide will show the internal components of the Dualshock 4 wireless controller.

Written By: Joshua Wong





## TOOLS:

- [Phillips #0 Screwdriver](#) (1)
-

## Step 1 — Open the chassis of the controller



- Begin by removing the screws in the back of the controller.

## Step 2 — Remove analog sticks and motors



- Remove the analog sticks and motors.



### Step 3 — Remove the top layer PCB



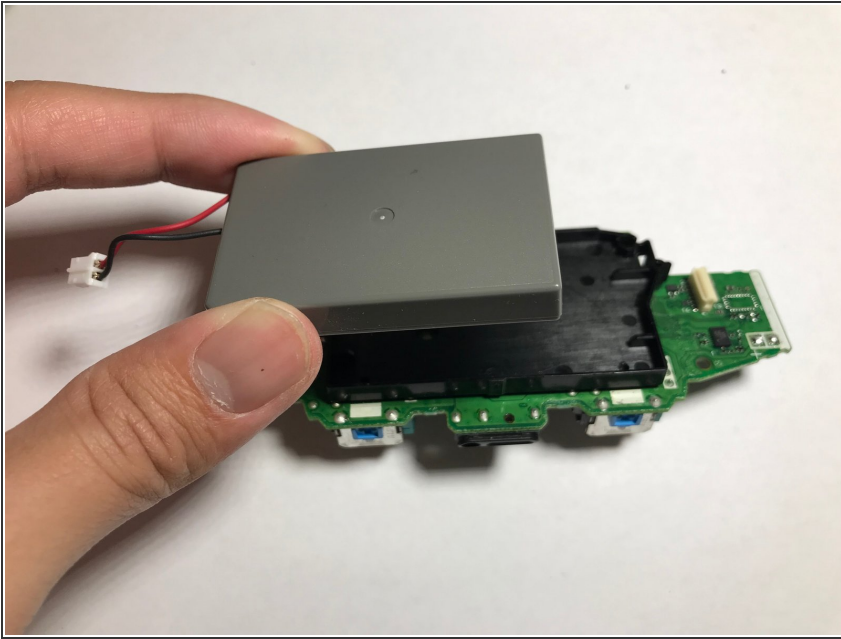
- Remove the top layer PCB. The PCB must be popped out of place and then angled in such a way that the trigger buttons at the top of the controller slide out of their slots.

### Step 4 — Remove the second layer PCB



- Remove the second layer PCB. This simply pops out of place.

## Step 5 — Remove the battery



- Flip over the second layer PCB. Remove the battery from its holder.

## Step 6 — Remove the light assembly



- Unscrew the two screws holding the light assembly together. Once the screws are undone, the parts of the assembly can be pulled out.

## Step 7 — Remove the USB module



- Unscrew the two screws holding down the USB module.