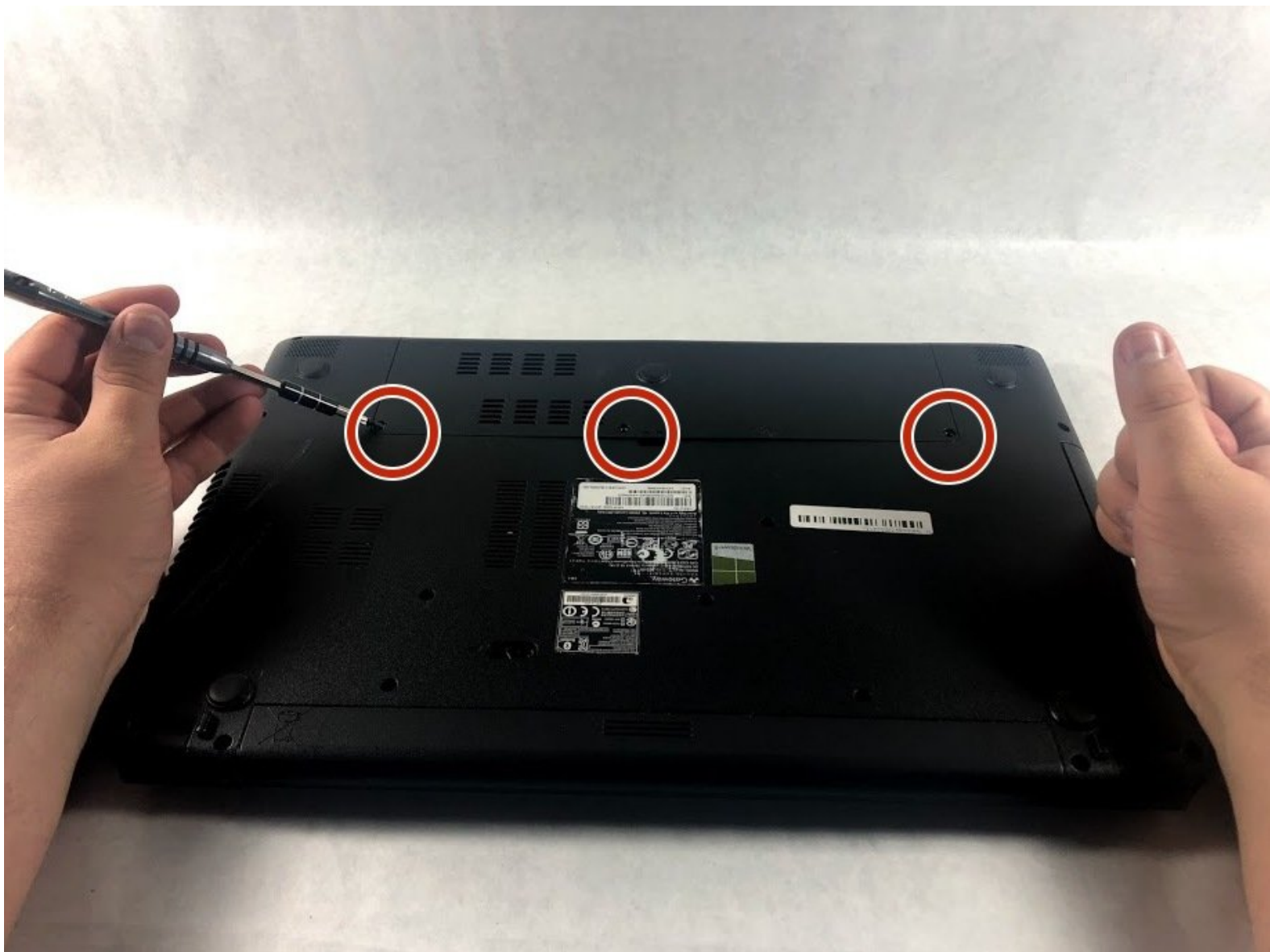




Gateway NE52214U Hard Drive Replacement

This guide will demonstrate how to remove and replace the Hard Drive in your Gateway NE52214U.

Written By: Kelsey Rodrigues



INTRODUCTION

Is your computer experiencing storage problems or errors with reading files? Consider using this guide to replace the hard drive in your device.



TOOLS:

- [Phillips #1 Screwdriver](#) (1)



PARTS:

- [7mm Deep Socket](#) (3)

Step 1 — Hard Drive



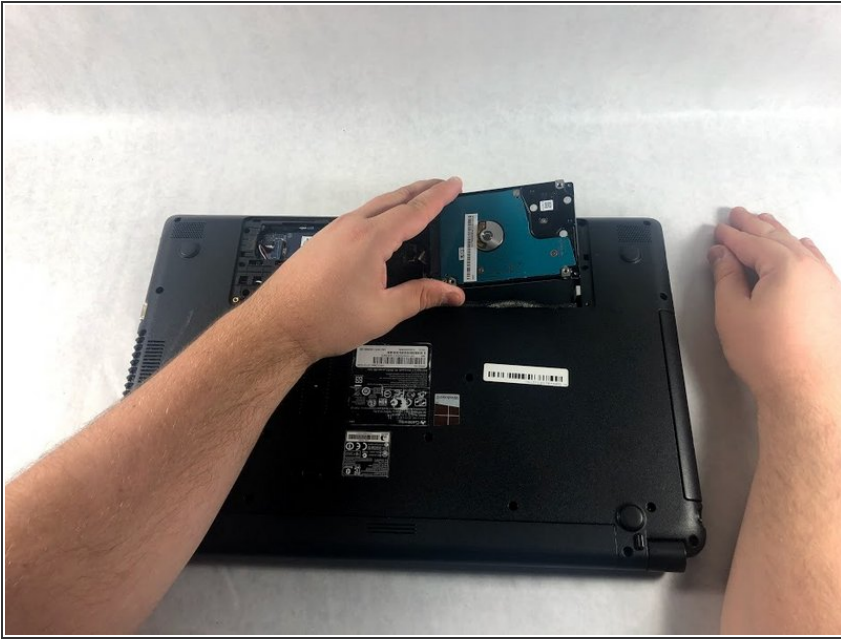
- ⚠ Make sure that your laptop is powered down and turned off.
- Flip the laptop over so the backside is facing you.
- Remove the three 7mm screws using the Phillips #1 screwdriver.

Step 2



- Lift the compartment cover up.

Step 3



- Remove the hard drive from the device.

To reassemble your device, follow these instructions in reverse order.