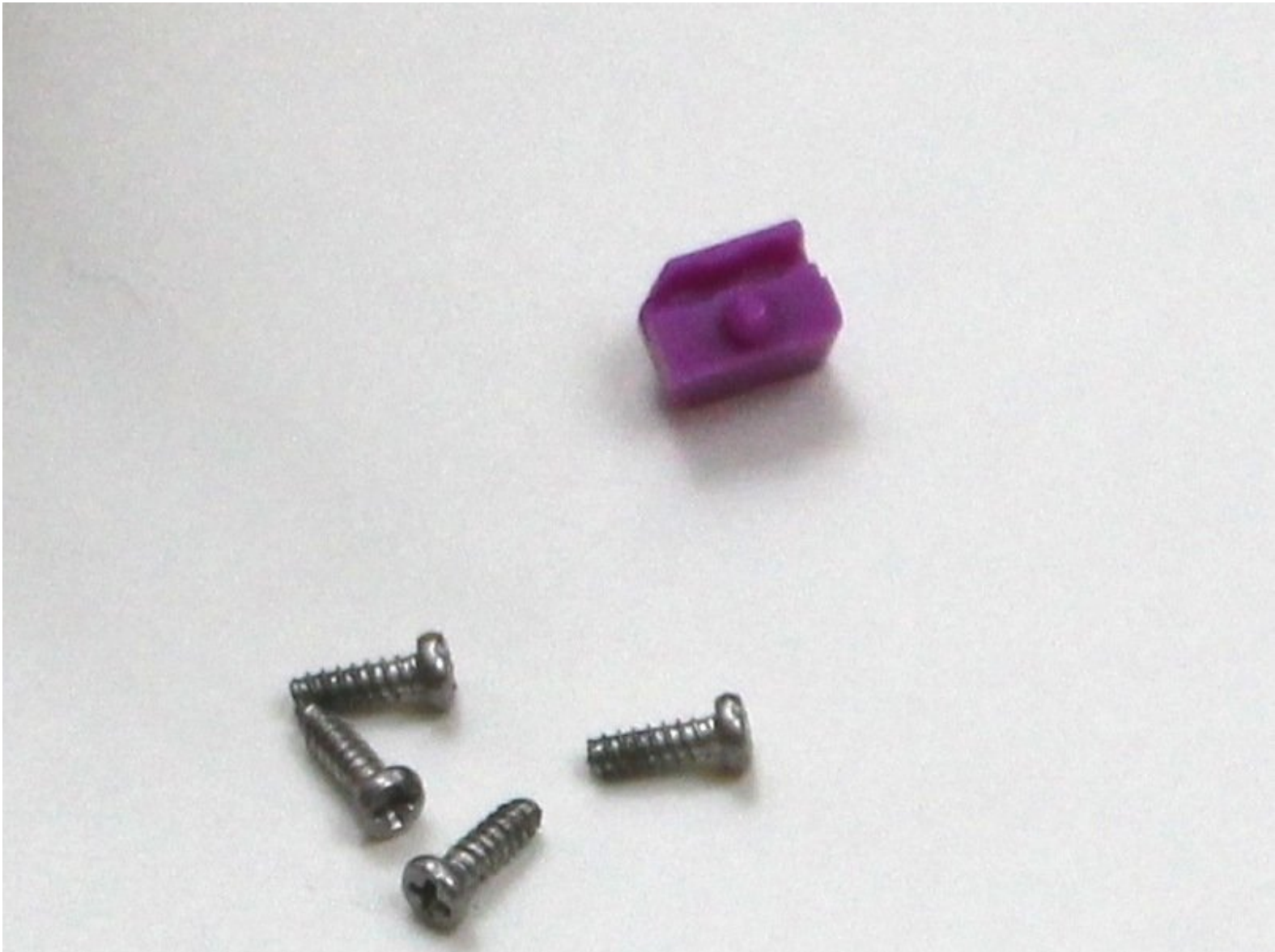




# VTech Kidizoom Smartwatch DX2 Master Switch Replacement

How to replace a VTech Kidizoom Smartwatch DX2 master switch.

Written By: Sydney



---

## INTRODUCTION

If your watch will not turn on there is a chance that your master switch is stuck or not functioning properly. The following guide will show you how to replace one of the most essential buttons on the Vtech Kidizoom Smart Watch DX.



### TOOLS:

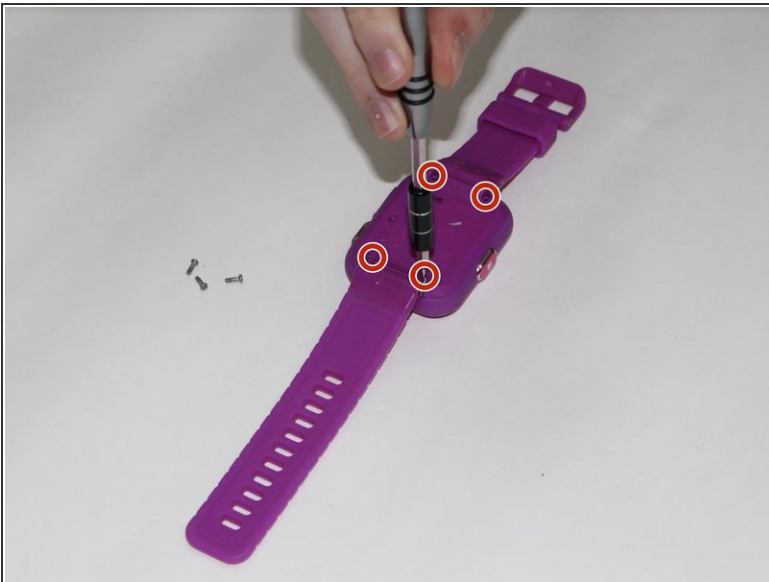
- [Phillips #00 Screwdriver](#) (1)
  - [Tweezers](#) (1)
-

## Step 1 — Master Switch



- Begin by flipping the watch over with its back facing upwards.

## Step 2



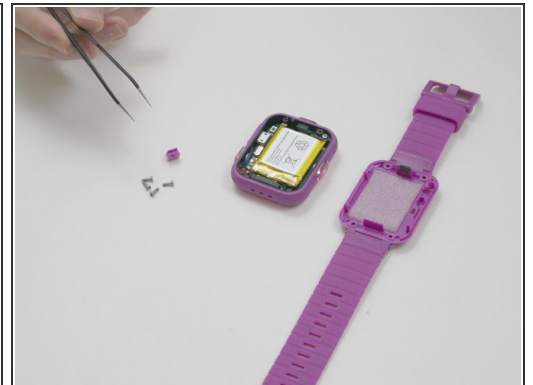
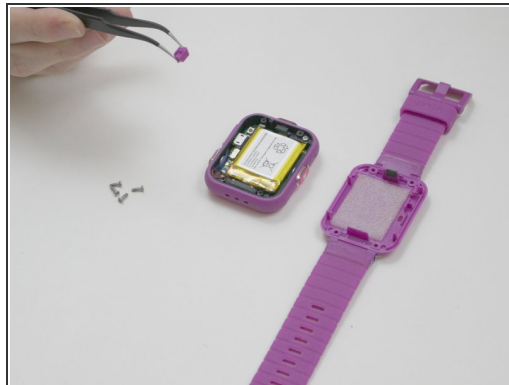
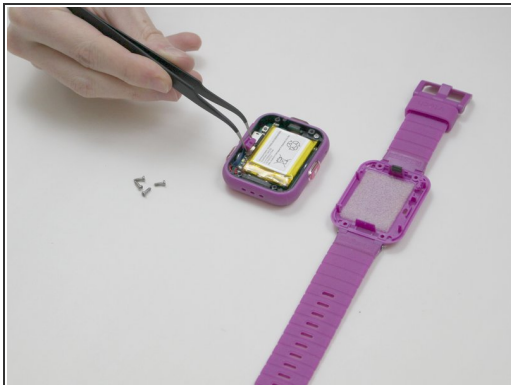
- Next, use the Phillips #00 screwdriver to unscrew the four 6.0 mm screws located in each corner of the watch to remove the backplate.

## Step 3



- Gently lift the backplate up to remove it.

## Step 4



- After removing the backplate, lift the master switch up from the circuit board.

To reassemble your device, follow these instructions in reverse order.