

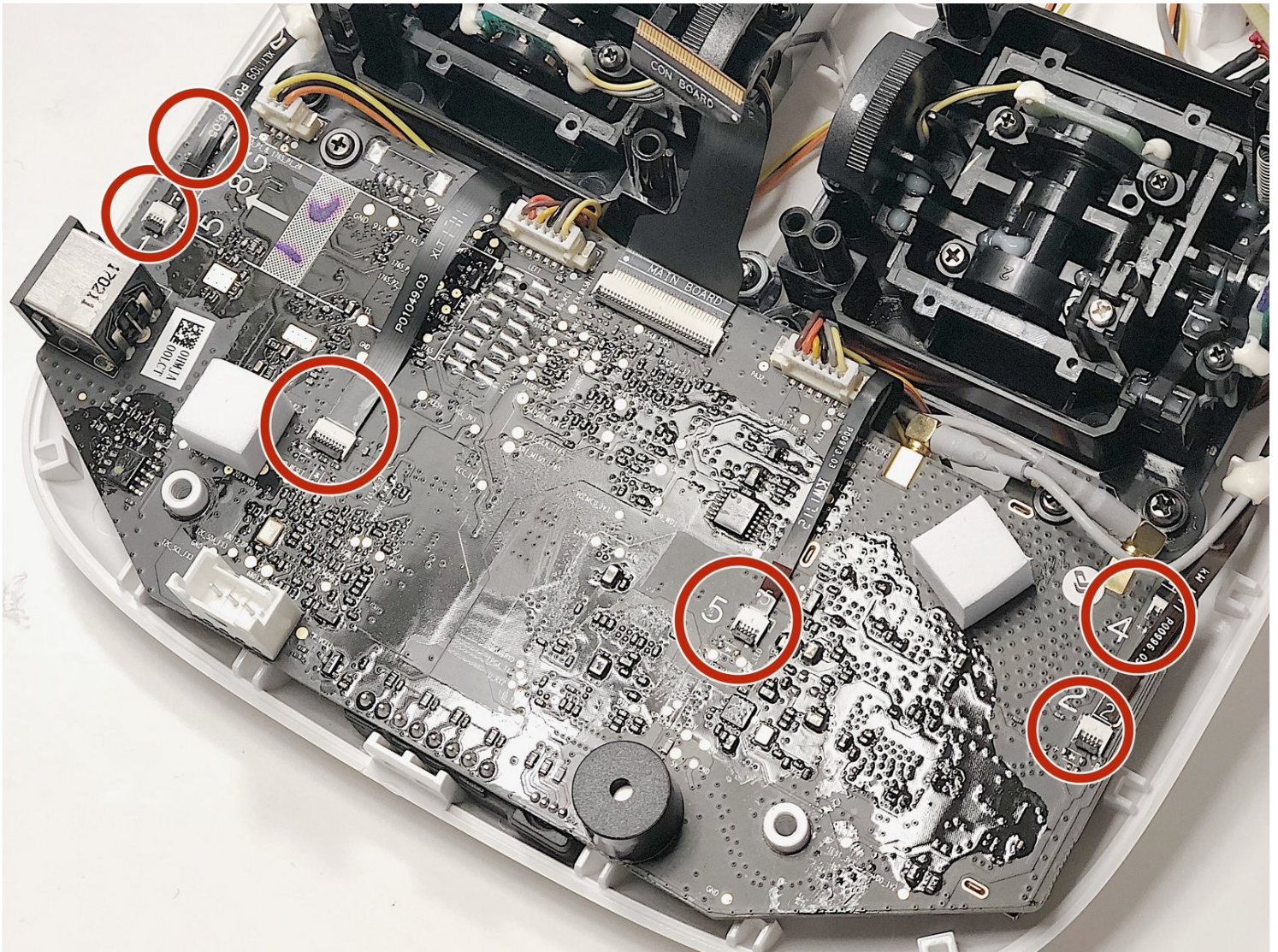


DJI Phantom 4 Advanced Remote Controller

Motherboard Replacement

This guide will show you how to remove and...

Written By: cade knott



INTRODUCTION

This guide will show you how to remove and replace the motherboard of the DJI Phantom 4 Advanced Remote Controller.

Before you begin:

- Please make sure to completely power off the the controller prior to any replacements.
- Please read the guide before any replacements in order to familiarize yourself with the process.

TOOLS:

Spudger (1)
TR8 Torx Security Screwdriver (1)
Phillips #0 Screwdriver (1)
Phillips #00 Screwdriver (1)
Tweezers (1)

PARTS:

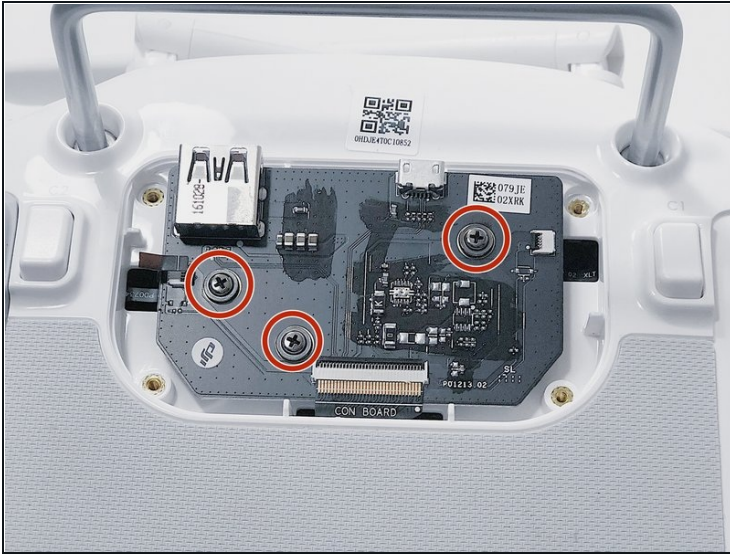
DJI Phantom 4 Advanced Remote Controller Motherboard (1)

Step 1 — Back Panel



- Remove the four screws with a Torx T8 screwdriver to access the back con board.

Step 2

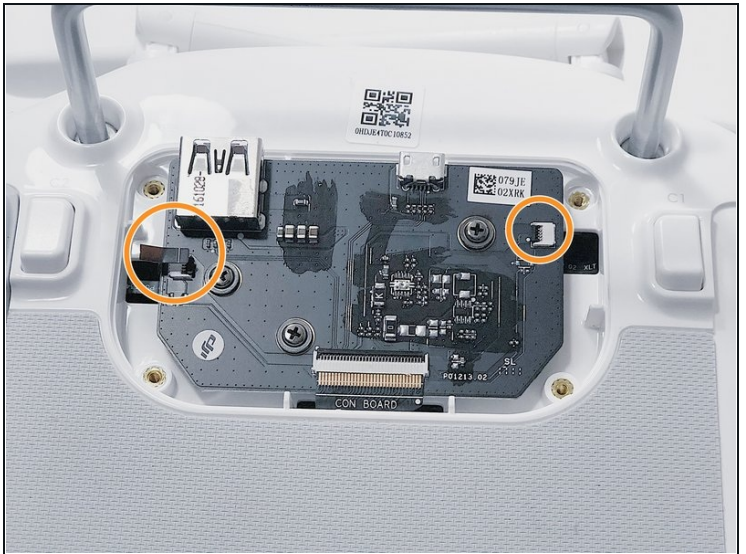
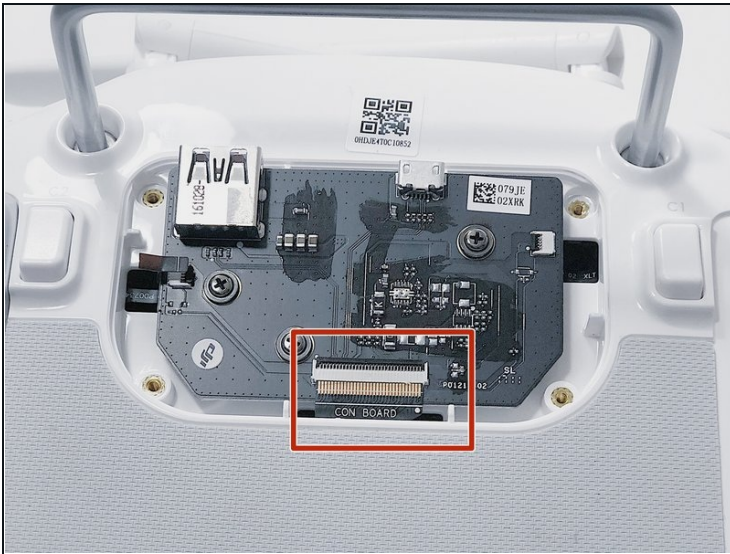


Phillips #00 screwdriver.



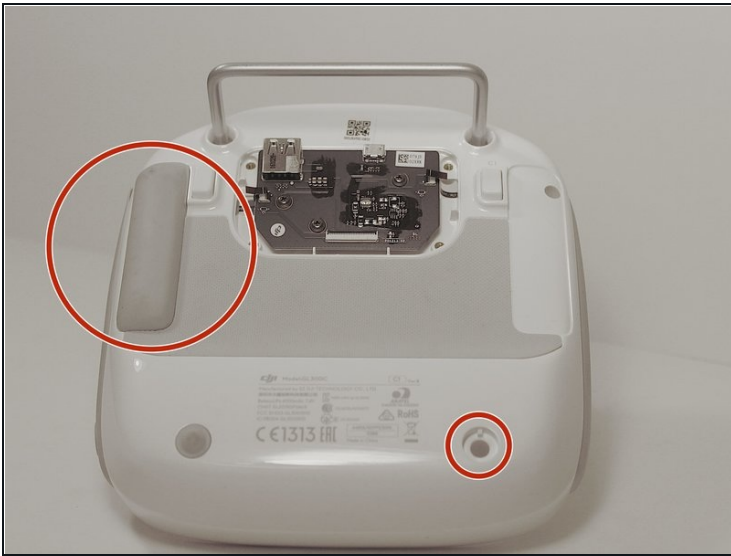
- Remove three screws using a Phillips #00 screwdriver.

Step 3



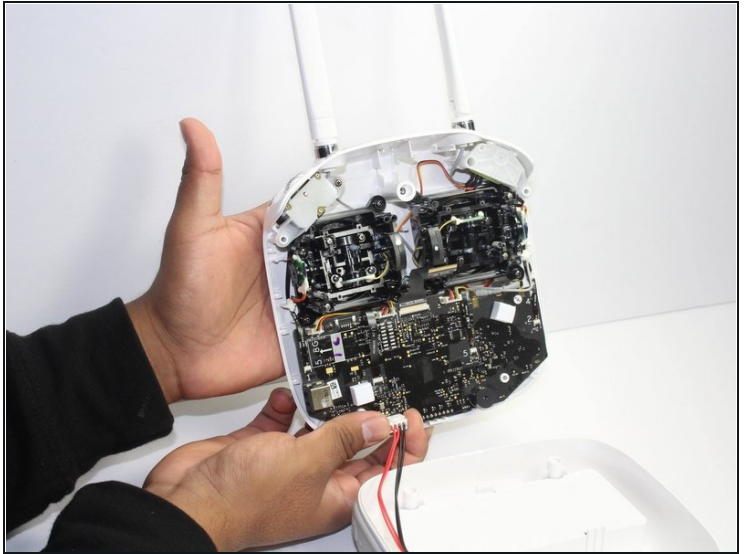
- With [tweezers](#), gently remove the large con board tab.
- Use your hands to remove the two small clips. Pull out from the socket, in a horizontal direction.

Step 4



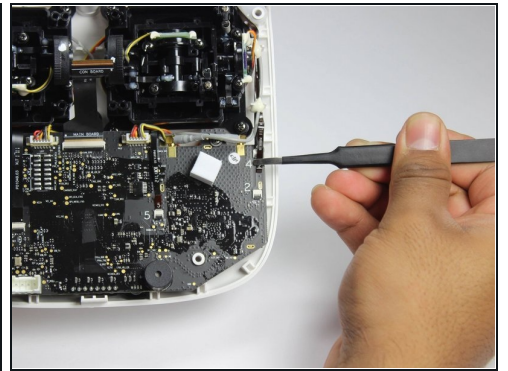
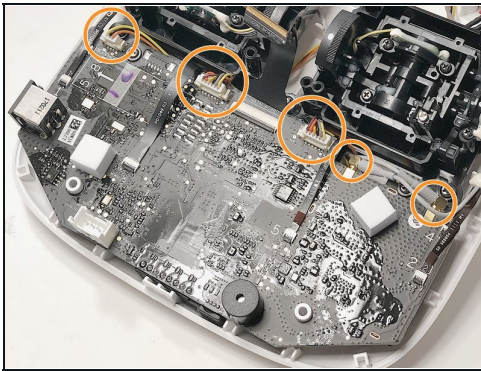
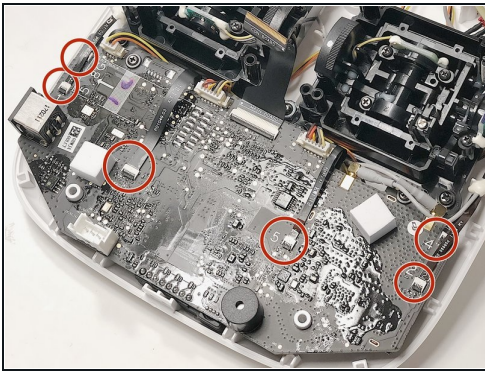
- Peel off the rubber grips to access the screw holes.
- ⚠ Make sure to save your grips and do not to get them stuck to anything, you are going to want to save the adhesive.
- Remove the back board and set it aside.

Step 5



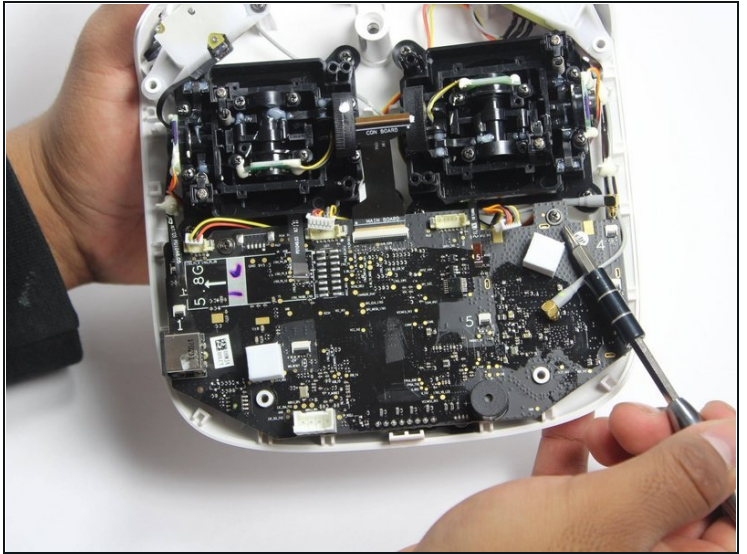
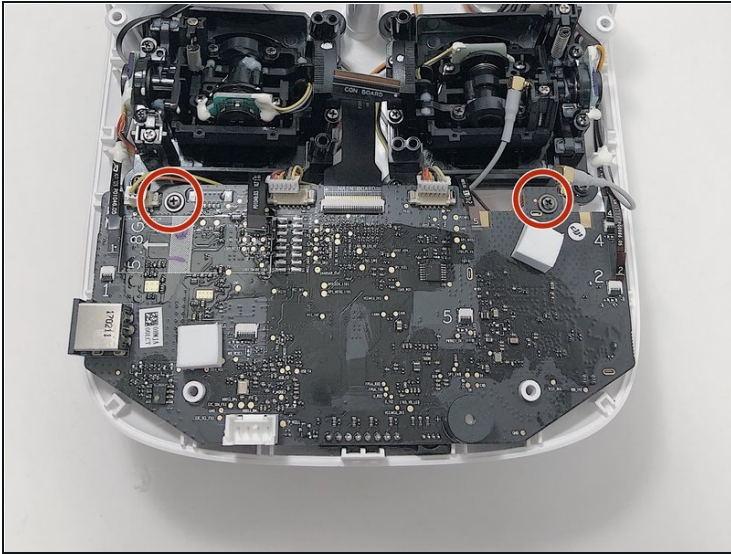
- Pull apart the back plastic panel.
- ① Recommended tool for this would be the metal spudger, but not required.
- Once the back panel is off, you will have access to the motherboard.

Step 6 — Motherboard



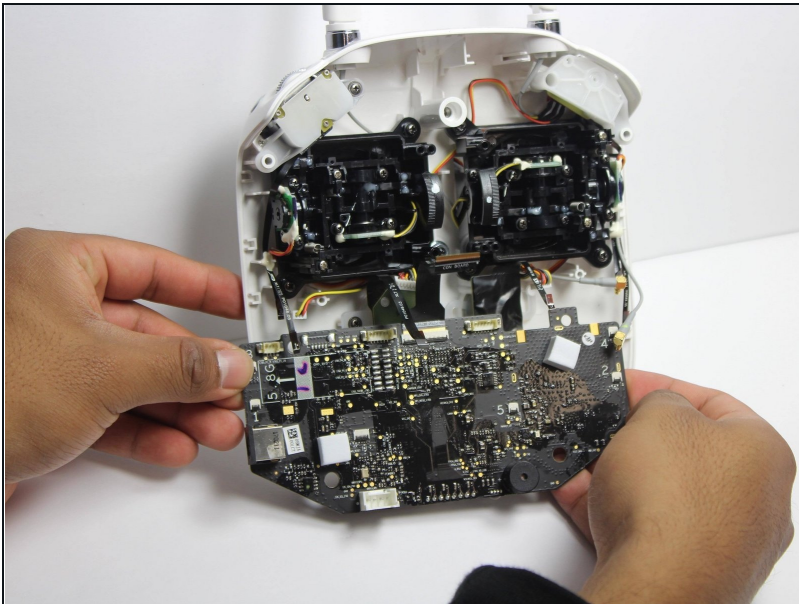
- Disconnect ribbon tabs 1,2,5,8G, and 3.
 - Remove ribbon tab by pulling gently along motherboard. Do not pull straight out.
- Then remove the plugs

Step 7



- With the Phillips #00 screwdriver, remove the two Phillips screws.

Step 8



⚠ Double check to make sure all tabs, plugs and screws are removed or disconnected.

- Gently lift motherboard out of the case.

To reassemble your device, follow these instructions in reverse order.