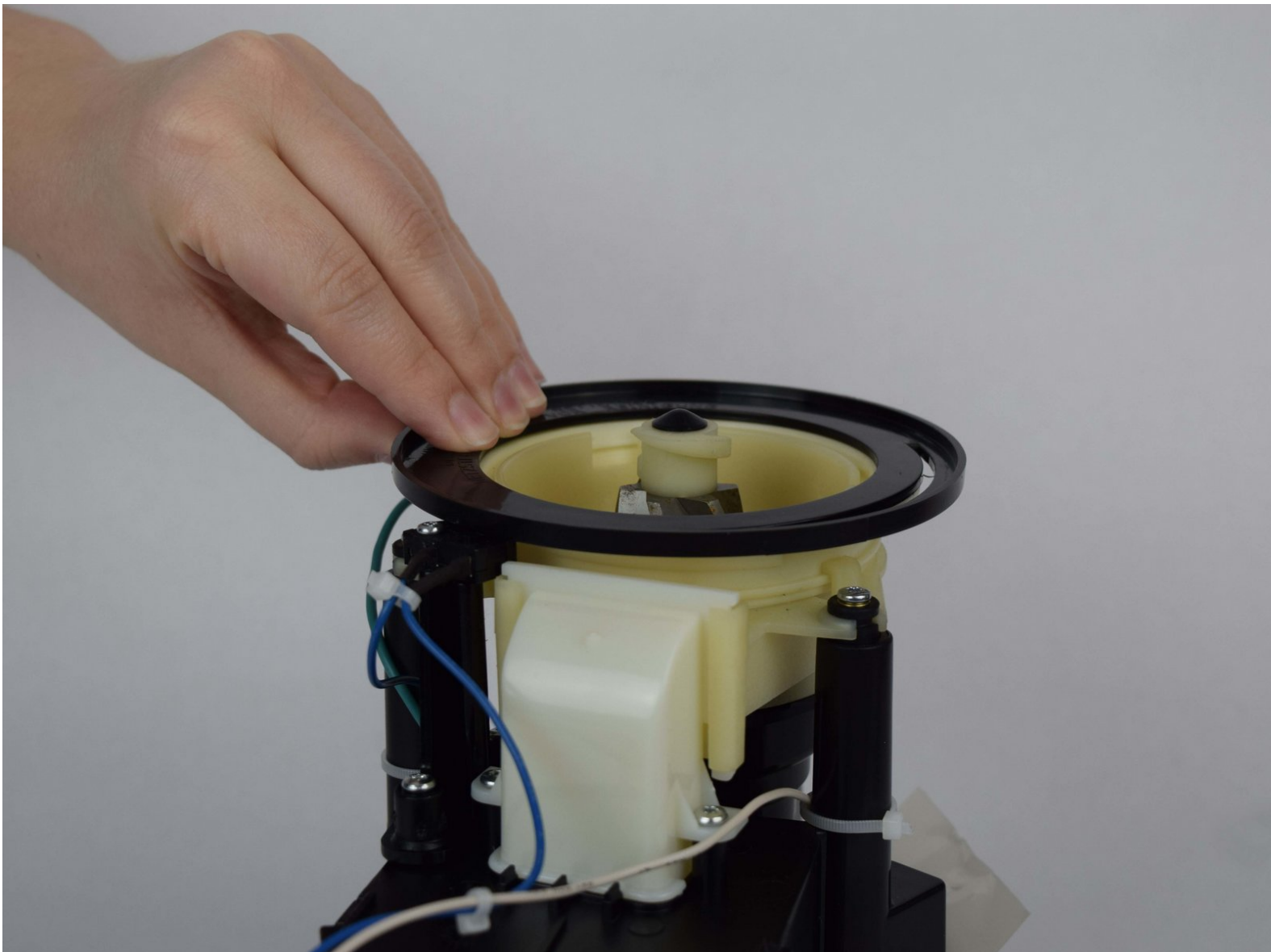




Capresso Infinity Bottom Conical Burr Replacement

This is a guide for the replacement of the bottom conical burr in the Capresso Infinity Coffee Grinder.

Written By: Nina Mackin



INTRODUCTION

If you need to replace the bottom conical burr, follow this guide to access it. The bottom conical burr is essential to having finely ground coffee, and if it is dull or no longer working, it needs to be replaced. For this guide you will need a Torx Security T20 Bit Screwdriver and an extension bit. To access the bottom conical burr, you will need to follow previous guides on replacing the outside metal casing. This guide is simple once you've finished the other.

TOOLS:

- [T10 Torx Security Bit Screwdriver](#) (1)
 - [T20 Torx Screwdriver](#) (1)
-

Step 1 — Metal Outside Casing



- Twist the top plastic container to the left counterclockwise.
- Pull upwards to remove.

Step 2



- Twist the top burr to the left counter clockwise.
- Pull upwards to remove.

Step 3



- Flip entire device upside down.
- Remove two rubber coverings on the back of the device.

Step 4



- Remove four 11.59mm T10 screws.
- ⓘ The screws will have small circular washers under them. Put them aside for reassembly.

Step 5



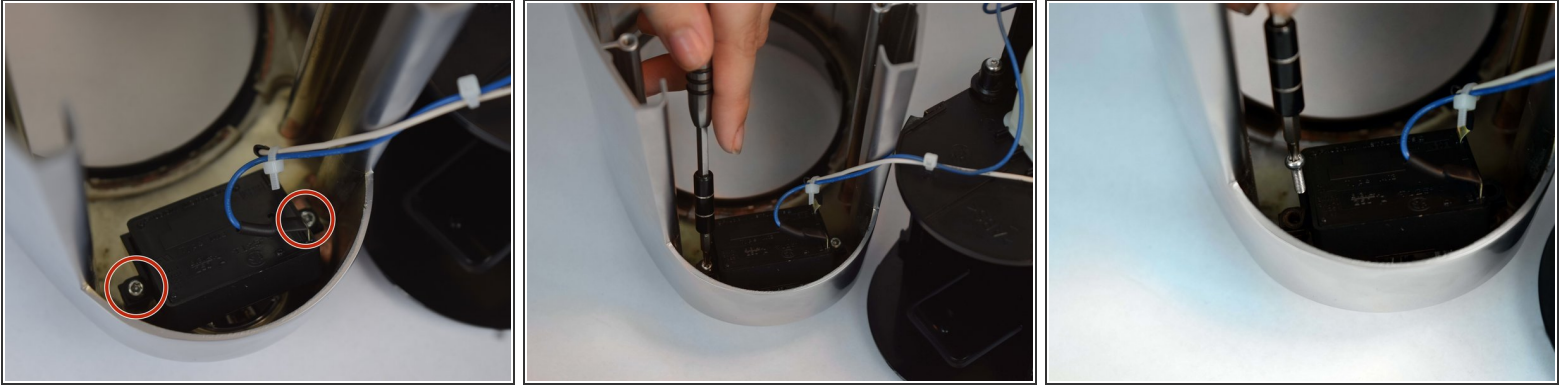
- Lift the metal outside casing off the black base.
- Flip the outside casing forward so you have access to the inside of it.

Step 6



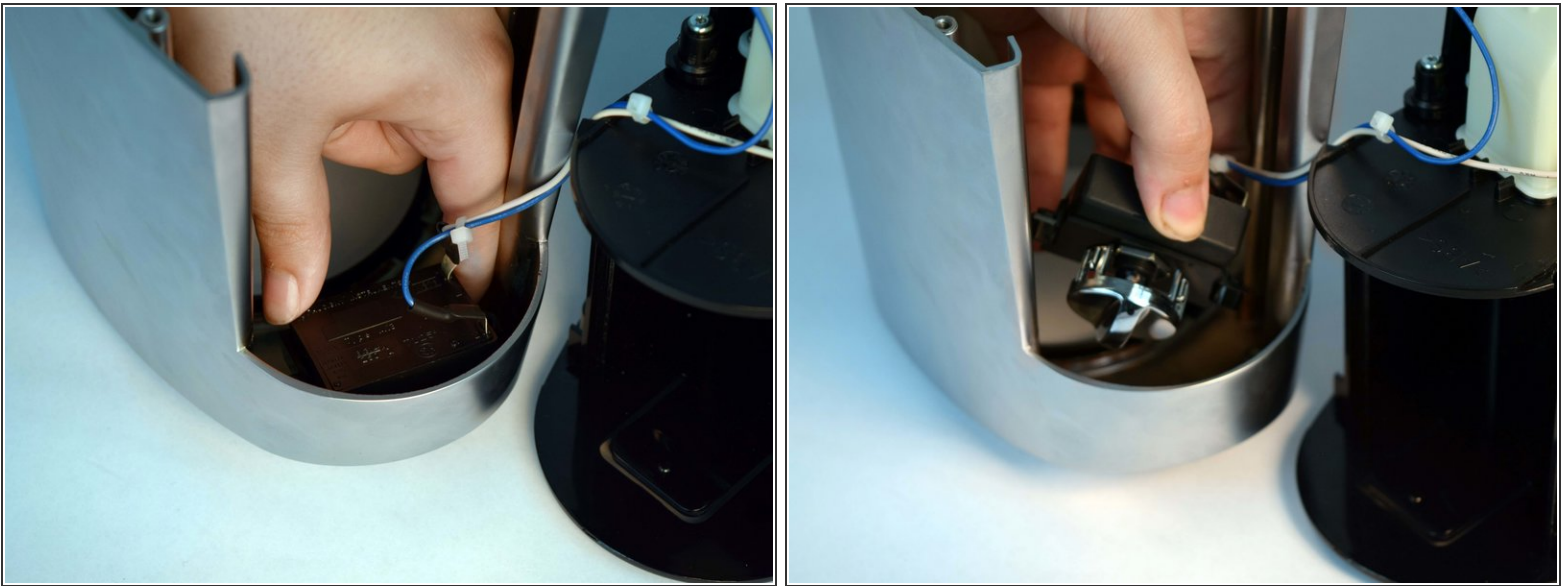
- Remove one 11.59mm T10 screw.
- Let the green wire fall, or place somewhere so it doesn't get in the way.
- ⓘ There will be a small metal retainer and washer, put them aside for reassembly.

Step 7



- Remove two 11.59mm T10 screws.

Step 8



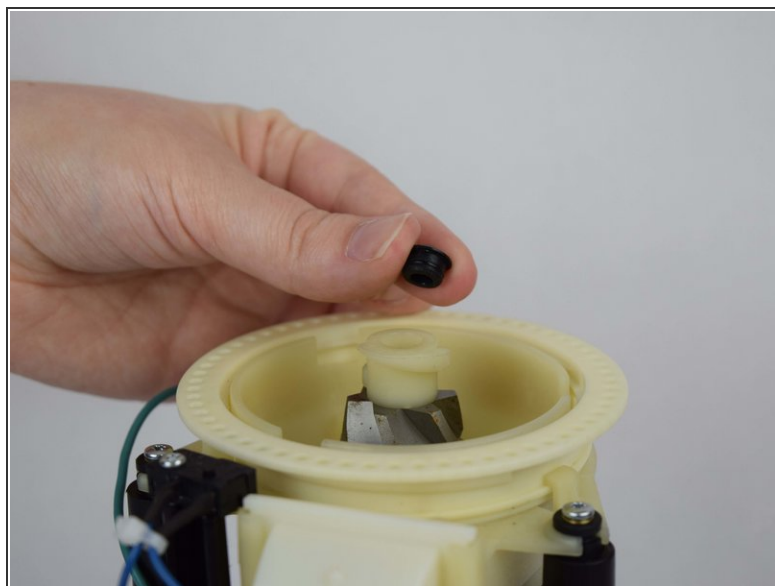
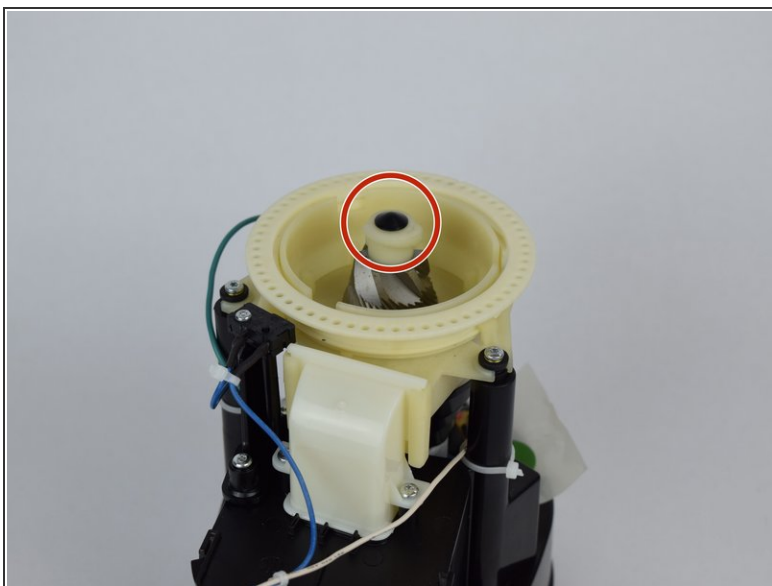
- Remove the time/on switch by pulling upwards.

Step 9 — Bottom Conical Burr



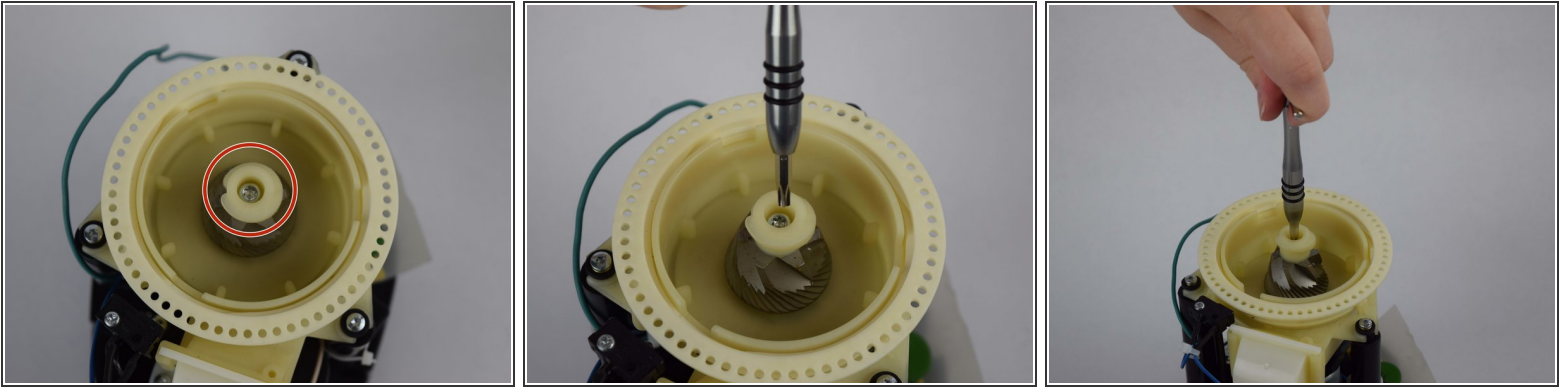
- Grab the edge of the plastic black ring that sits on top of the device and gently pull up to release.

Step 10



- Remove the black rubber knob atop the bottom burr by gently pulling up.

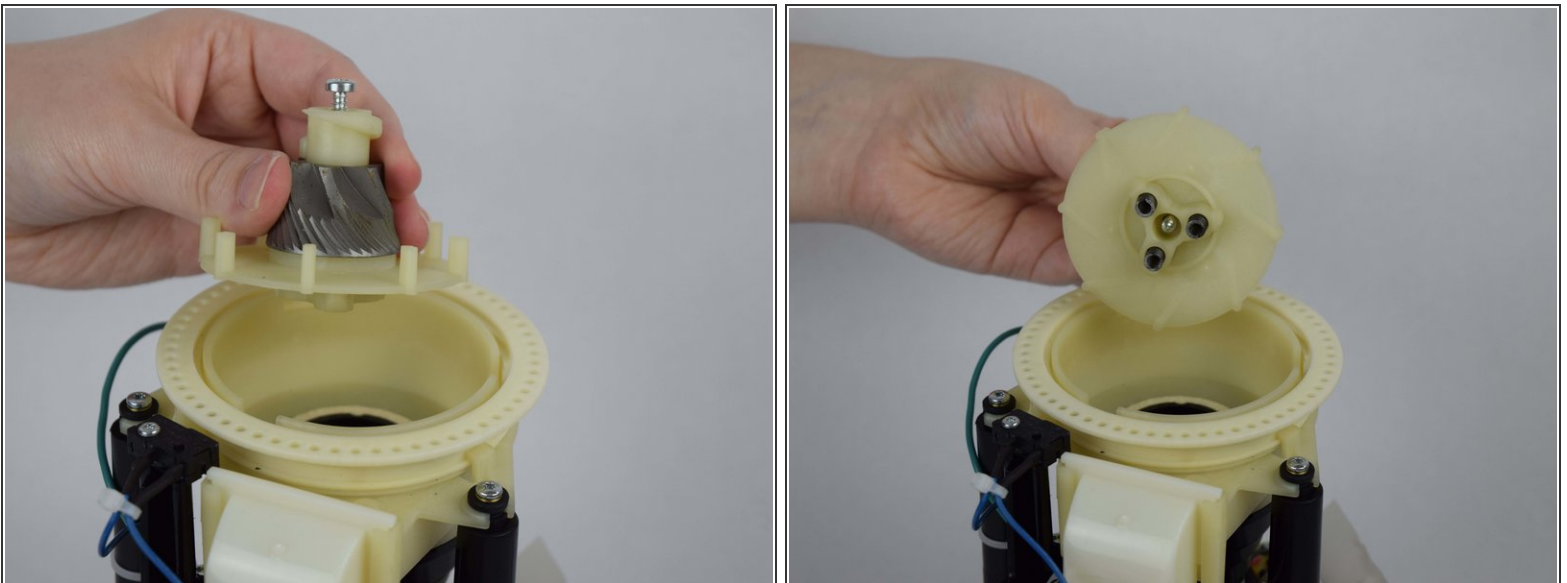
Step 11



- Partially remove one 47.20mm T20 screw.

i The screw does not need to come out completely, it just needs to be loose enough pull the burr out of the device.

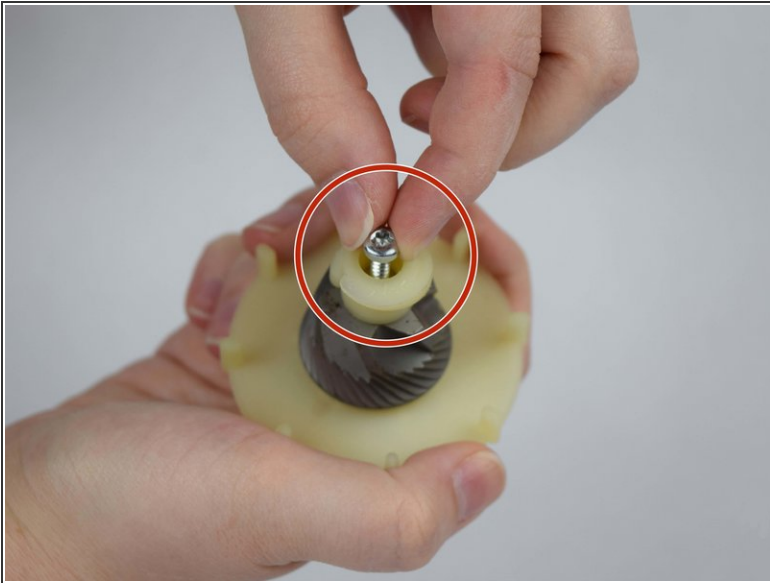
Step 12



- Remove the bottom burr piece by pulling upwards.

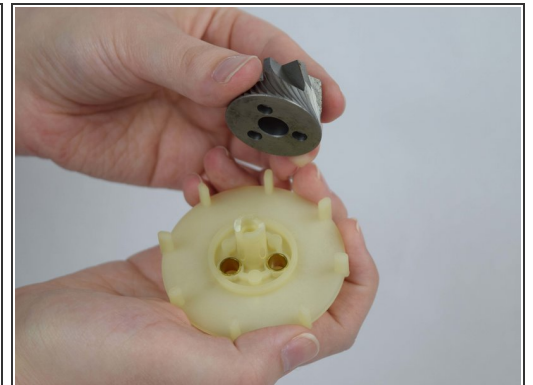
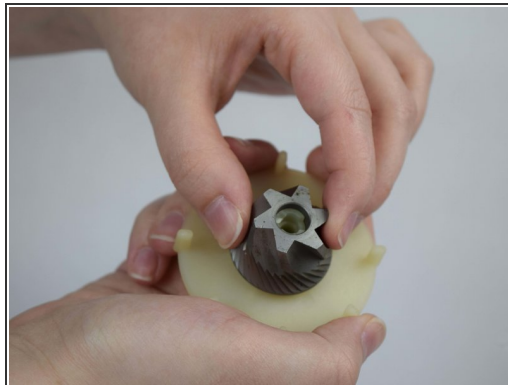
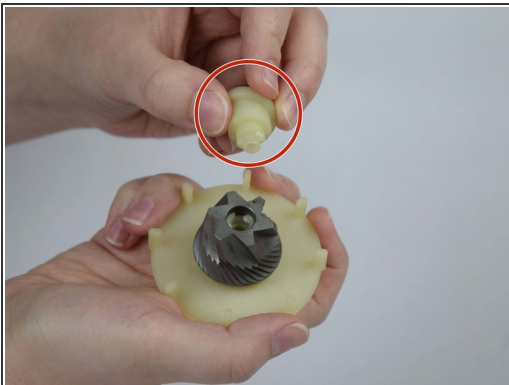
i There will be 3 springs and 3 metal balls under the springs, located underneath the burr. Put them aside for reassembly.

Step 13



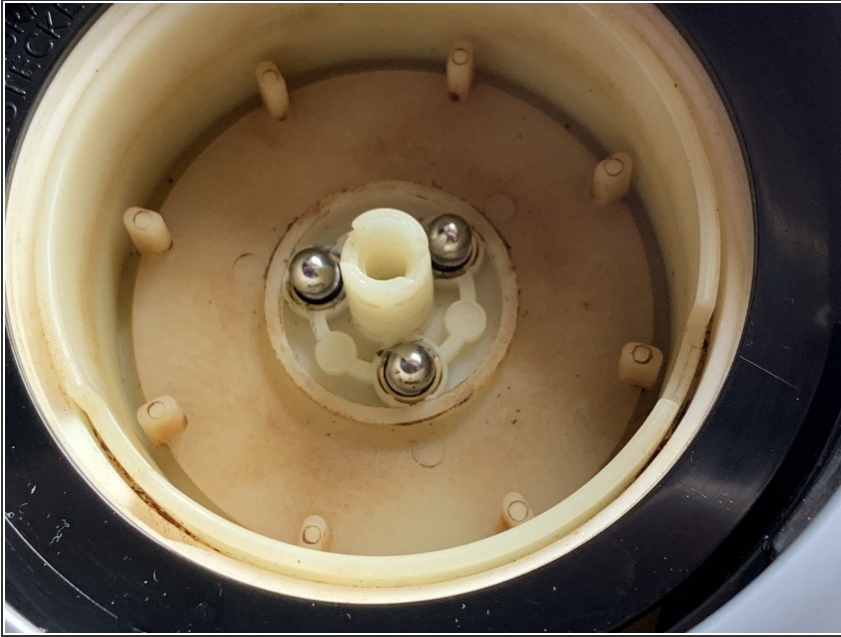
- Remove the loosened screw by pulling it upwards.

Step 14



- Grip the plastic piece at the top of the conical burr and pull upwards to remove.
- Grip the metal burr, and pull upwards to slide it off the plastic base.

Step 15 — Spring and Bearing Positions



- This is the correct position of bearings and springs when the screw and bottom burr are removed.

To reassemble your device, follow these instructions in reverse order.