



DJI Phantom 4 Advanced Remote Controller

Back Panel Replacement

removing the back panel allows you to access everything inside the remote.

Written By: cade knott



INTRODUCTION

Use this guide to replace the back con board of a DJI Phantom 4 Advanced Remote Controller.

With step by step detailed instructions, you will be able to safely resolve issues that may arise with the back con board.



TOOLS:

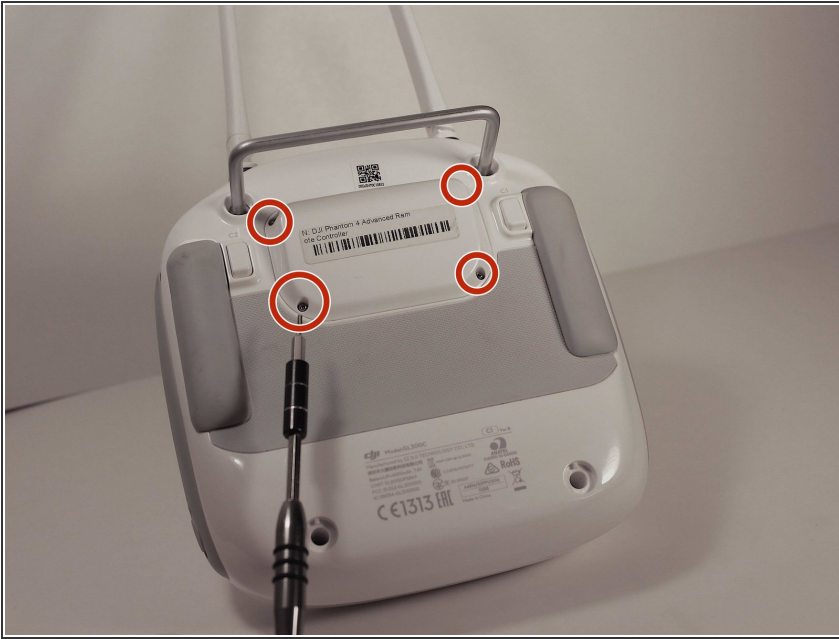
- [Spudger](#) (1)
- [Tweezers](#) (1)
- [T8 Torx Screwdriver](#) (1)
- [Phillips #0 Screwdriver](#) (1)



PARTS:

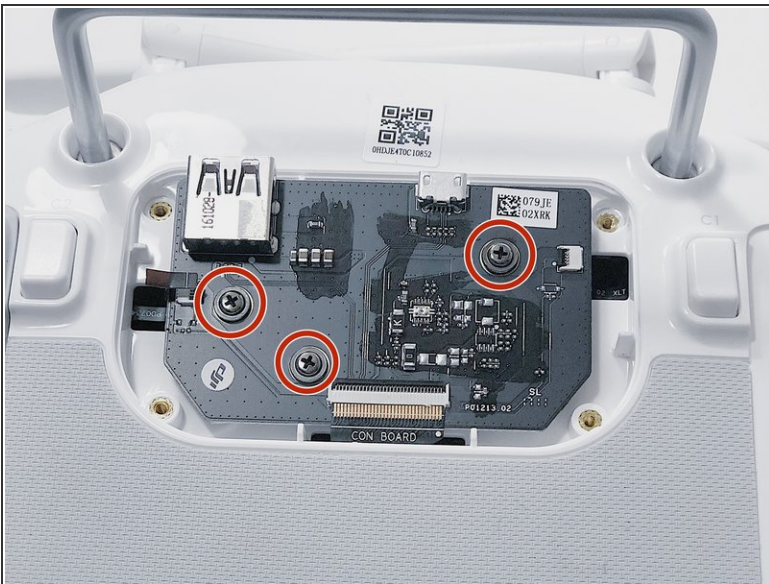
- [DJI Phantom 4 Advanced Remote Controller Lower Shell](#) (1)

Step 1 — Back Panel



- Remove the four screws with a Torx T8 screwdriver to access the back con board.

Step 2

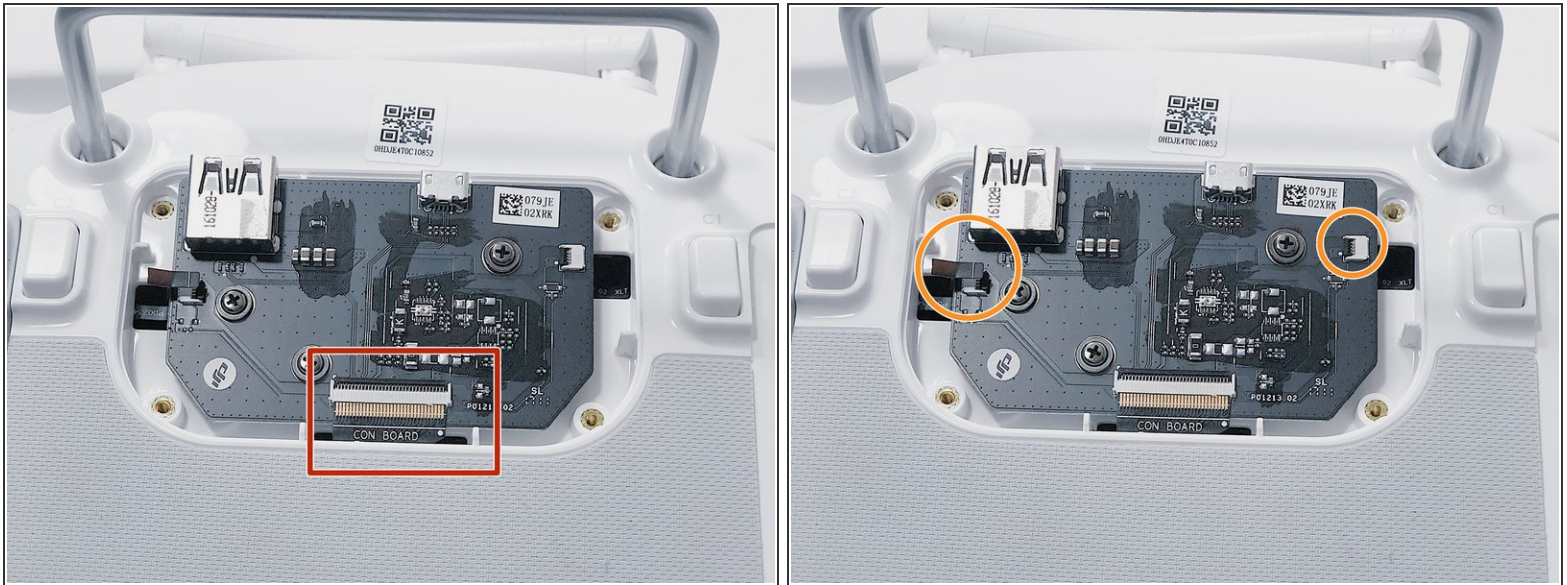


Phillips #00 screwdriver.



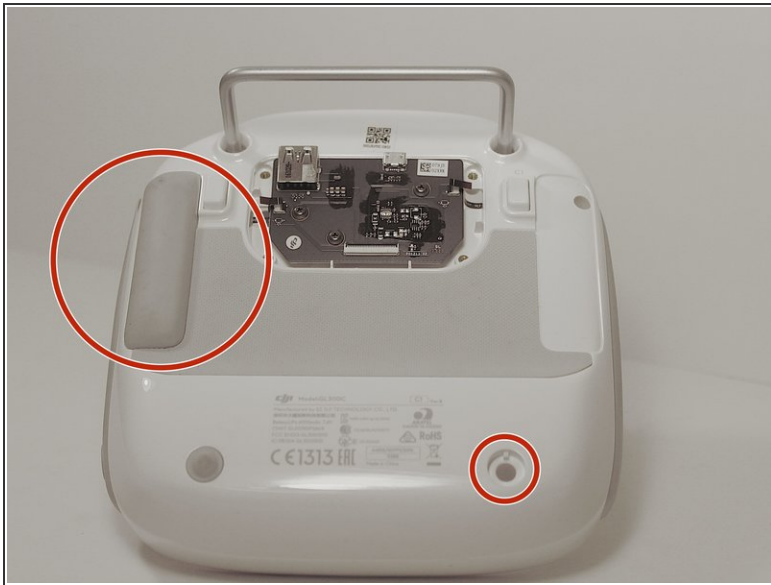
- Remove three screws using a Phillips #00 screwdriver.

Step 3



- With tweezers, gently remove the large con board tab.
- Use your hands to remove the two small clips. Pull out from the socket, in a horizontal direction.

Step 4

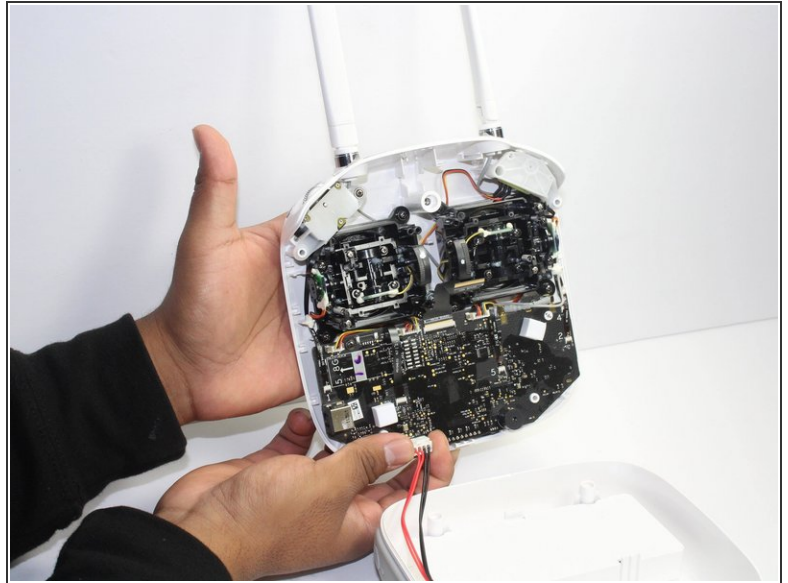


- Peel off the rubber grips to access the screw holes.

⚠ Make sure to save your grips and do not get them stuck to anything, you are going to want to save the adhesive.

- Remove the back board and set it aside.

Step 5



- Pull apart the back plastic panel.
- ⓘ Recommended tool for this would be the metal spudger, but not required.
- Once the back panel is off, you will have access to the motherboard.

To reassemble your device, follow these instructions in reverse order.