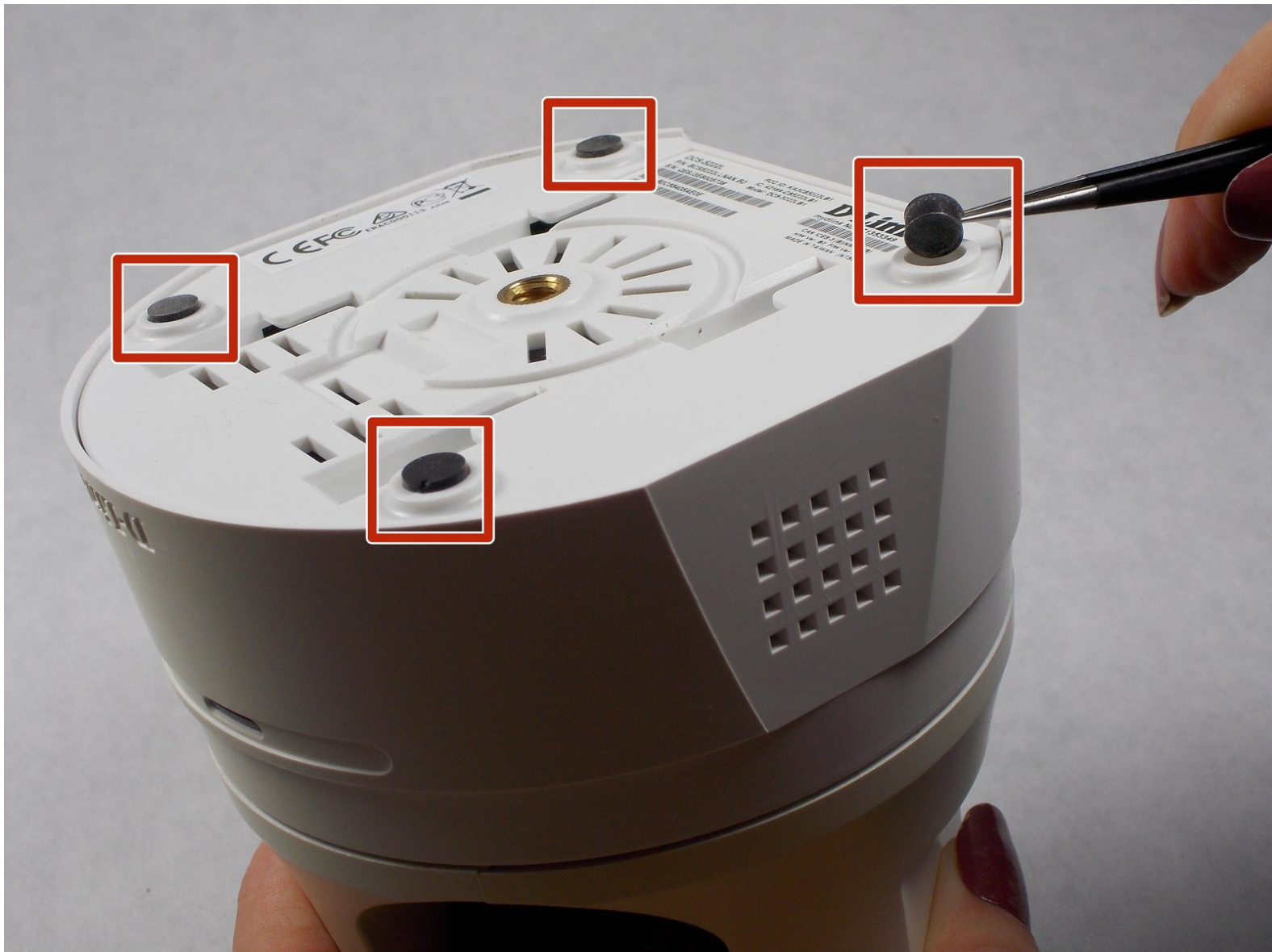




D-Link DCS-5222L Lens Replacement

How to replace a D-Link DCS-5222L lens.

Written By: Atefeh Rahmani



INTRODUCTION

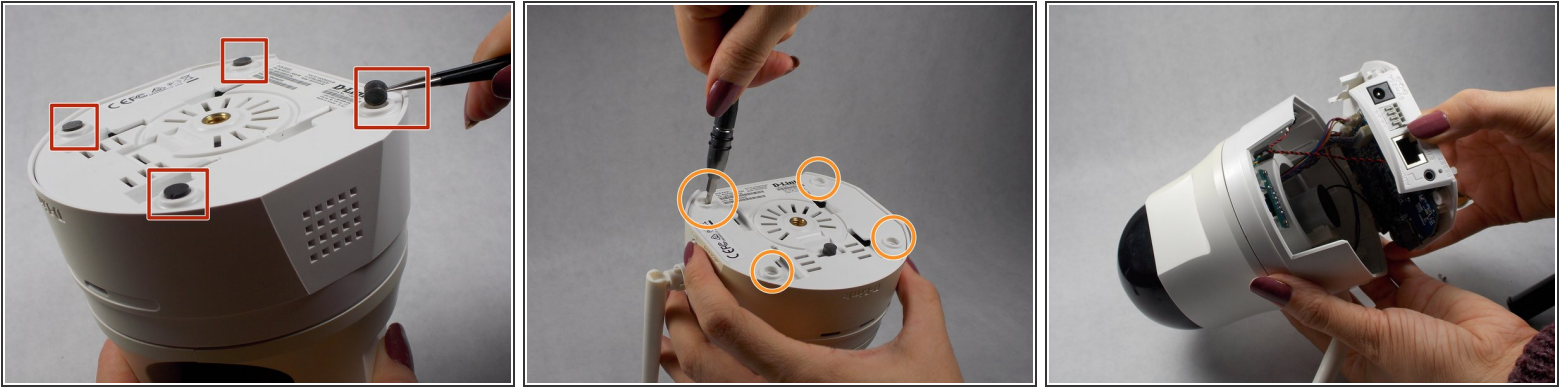
If the security camera image is not clear or does not show any picture, at first, take a look at the lens of the camera. If the lens of the camera was scratched or broken follow this replacement guide to replace the broken lens with a new one.



TOOLS:

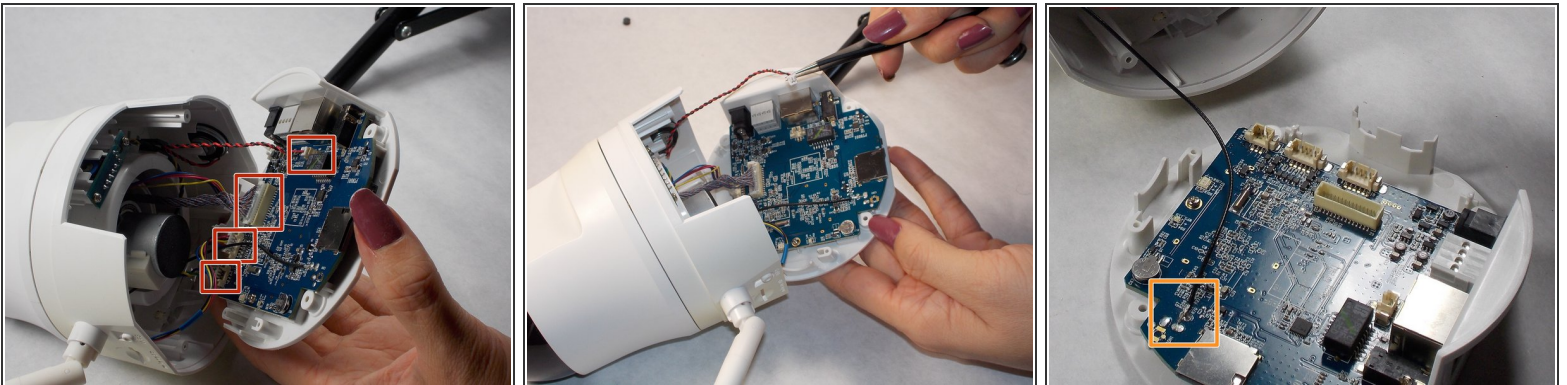
- [Phillips #1 Screwdriver](#) (1)
 - [iFixit Opening Tools](#) (1)
 - [Tweezers](#) (1)
 - [Phillips #0 Screwdriver](#) (1)
-

Step 1 — Lens



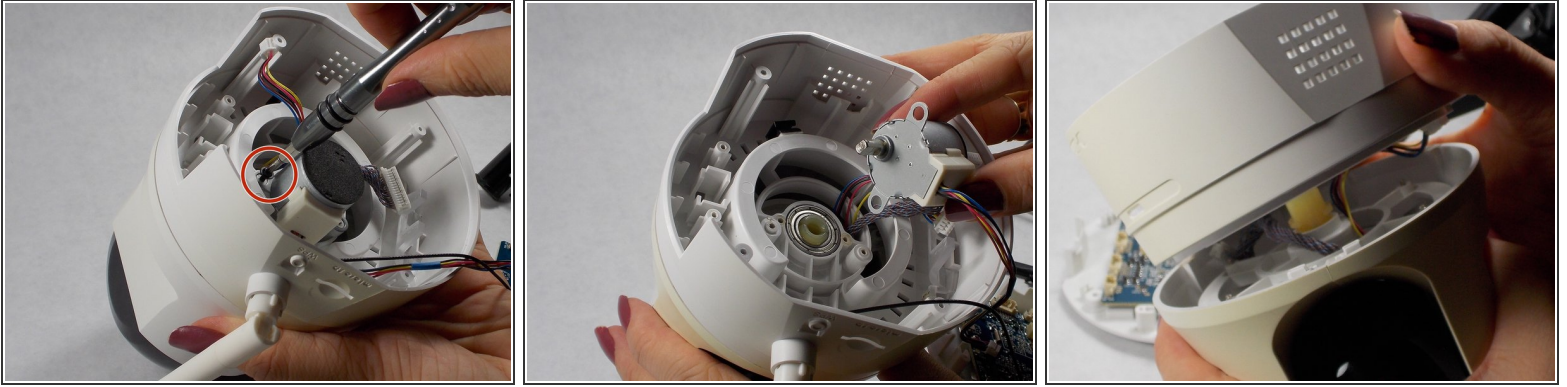
- Remove the four rubber feet with tweezers to access the screws.
- Remove all four 7mm screws by using a #1 Phillips screwdriver.
- Then, with your hands, pull off the lower part of the camera body.

Step 2



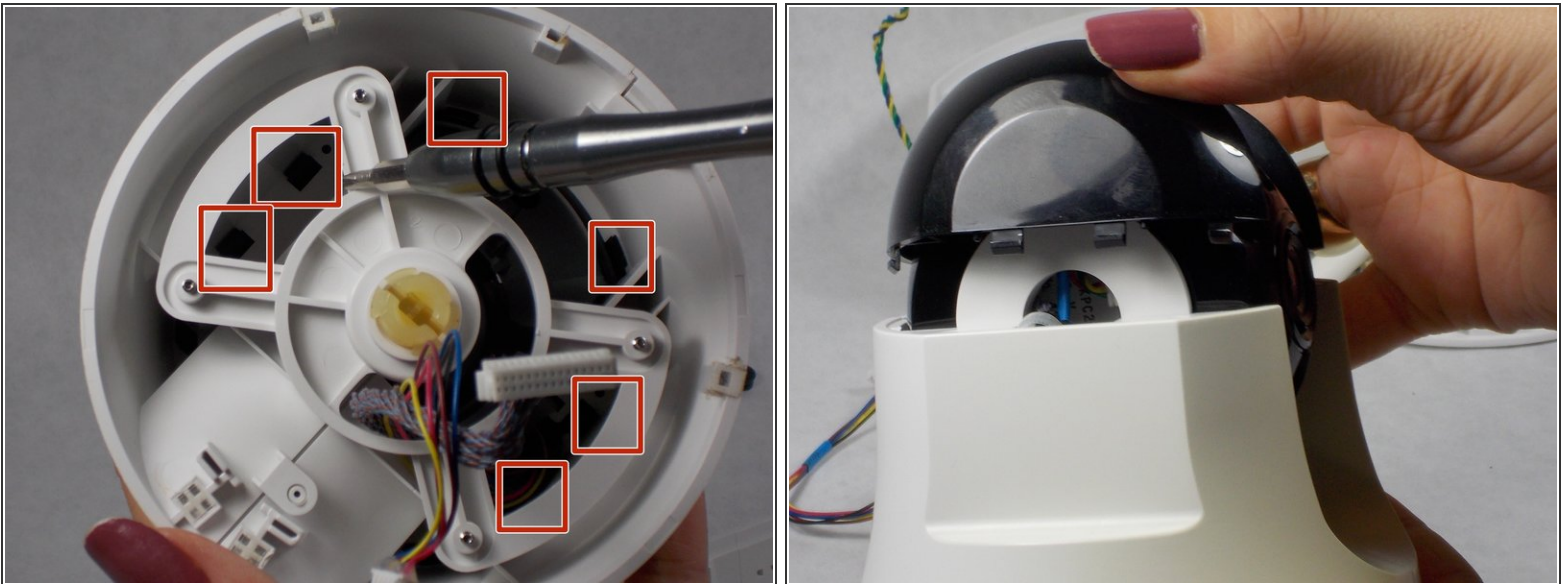
- On the base motherboard, there are five connecting cables. Disconnect all of them from the motherboard gently using safety tweezers.
- ⓘ Do not cut or damage the cables.
- ⓘ Disconnecting the antenna cable from motherboard is not necessary.

Step 3



- Remove the two 7mm screws holding the motor using a #1 Phillips screwdriver.
- Pull off the motor and lift away the midbody of the camera using your hands.

Step 4



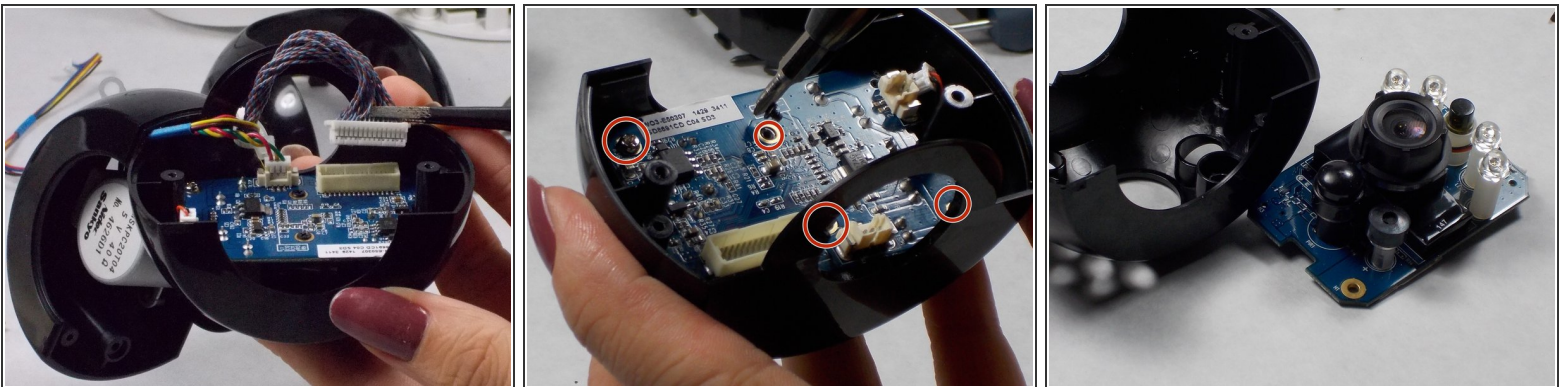
- Separate the black camera shroud from the upper body by prying loose the tabs with a plastic opening tool or spudger.
- Use your hands to wiggle the shroud free.

Step 5



- Use a #1 Phillips screwdriver to unscrew the four 5mm screws on both sides of the black camera housing to separate it from white body.
- Unscrew the two 7mm #1 Phillips screws on both sides of the camera housing to open it.

Step 6



- Gently disconnect the three cables from the small motherboard using safety tweezers.
- Use a #0 Phillips screwdriver to remove the two black 2mm screws and a #1 Phillips screwdriver to remove the 2 silver 6mm screws.
- Separate the board from the black housing.

Step 7



- Using your fingers, remove the focus adjustment ring.
- Twist the lens to unscrew it from the camera module.
- Replace the broken lens with new one and reassemble all parts of the camera respectively.

To reassemble your device, follow these instructions in reverse order.