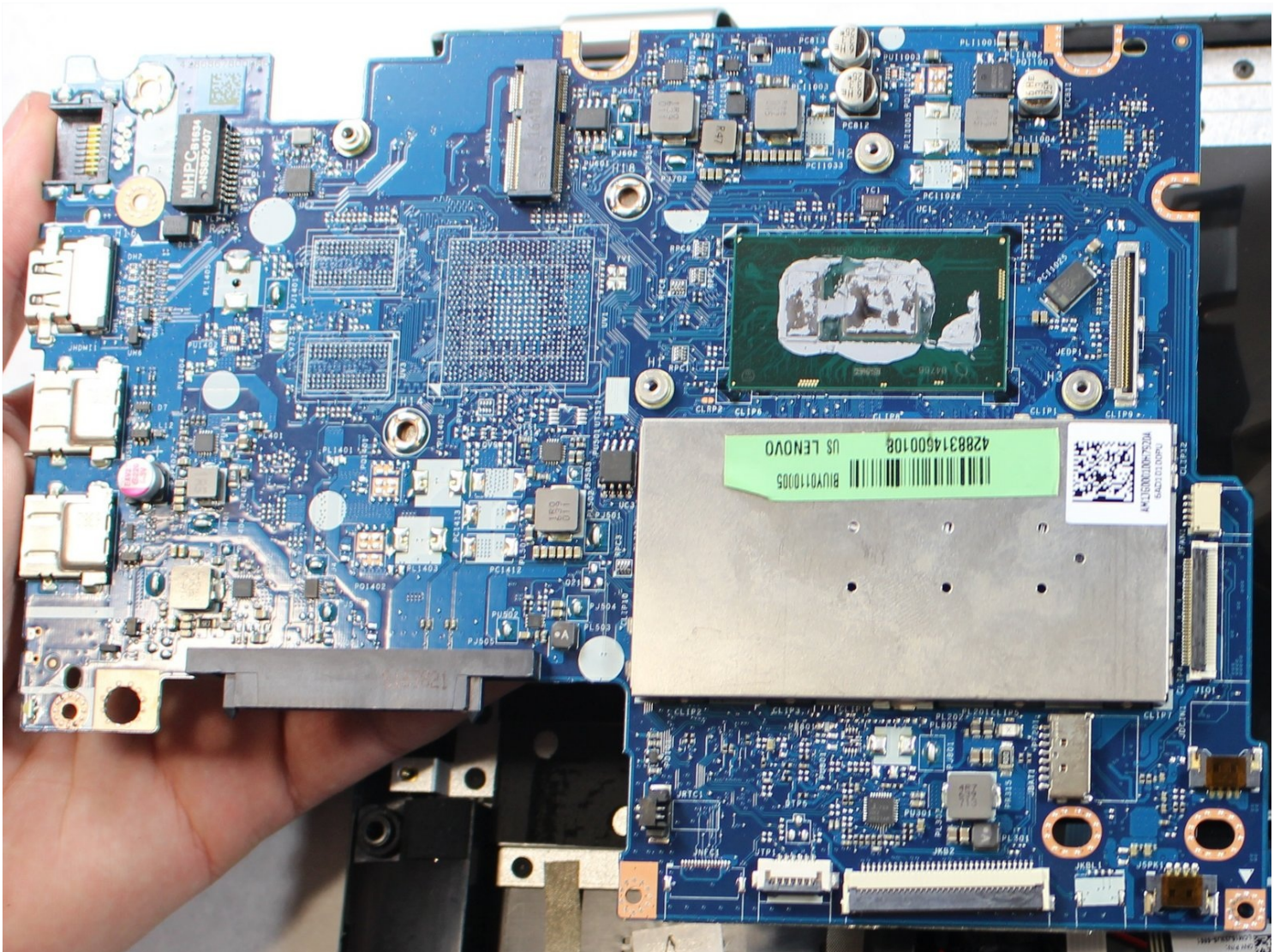




Lenovo IdeaPad Flex 4-1470 Motherboard Replacement

This guide will help you to replace your...

Written By: Elijah Ellis



INTRODUCTION

This guide will help you to replace your computer's motherboard, one of the most essential components of your computer. To replace this, you will have to take apart a good portion of your laptop, so be ready with sufficient tools, work area, and time.

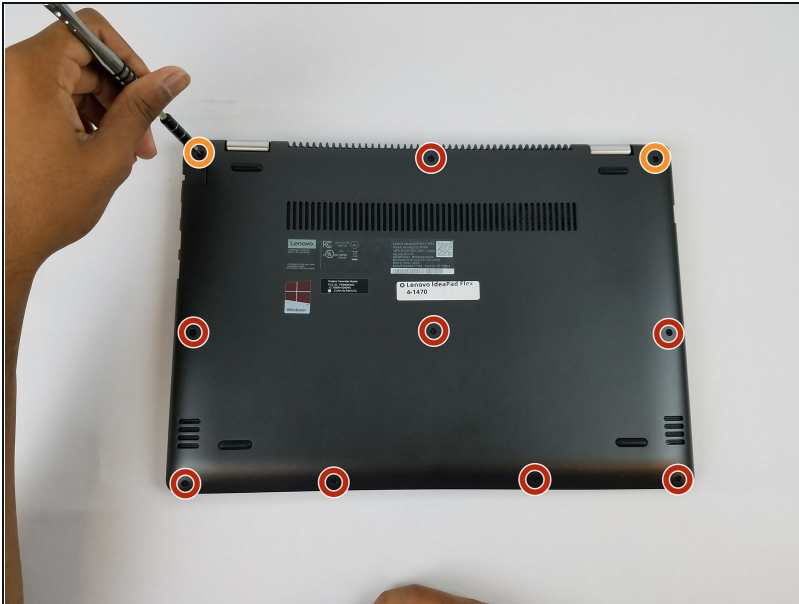
TOOLS:


[Phillips #0 Screwdriver](#) (1)
[iFixit Opening Tool](#) (1)
[Tweezers](#) (1)

PARTS:

[5B20L46045 - Lenovo Laptop](#)
[Motherboard - Genuine](#) (1)

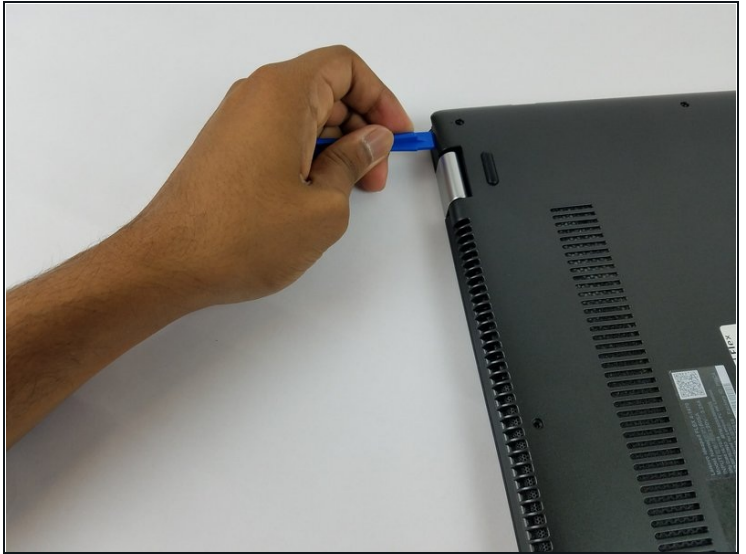
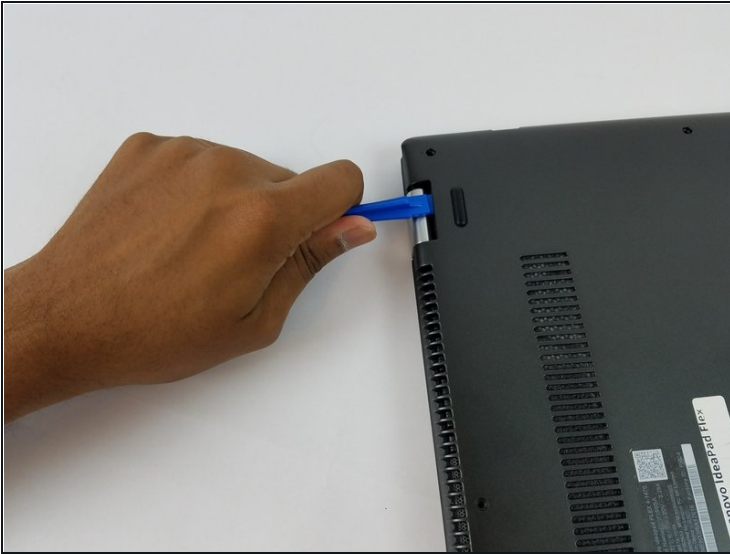
Step 1 — Lower Case



 **Ensure your computer is completely OFF before starting this guide.**

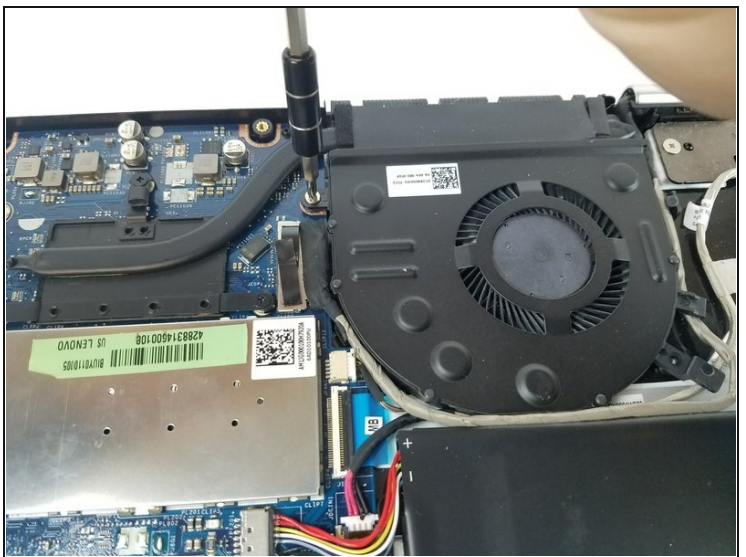
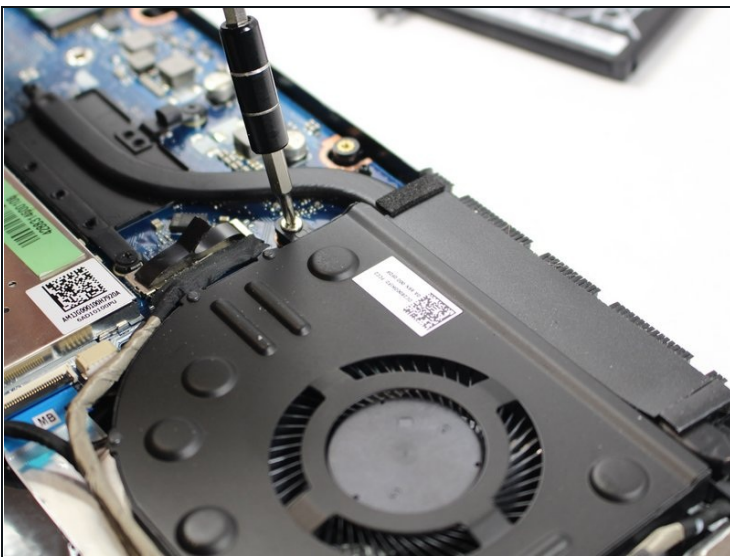
- Remove the eight 6 mm screws using a Phillips #0 screwdriver.
- Remove the two 11 mm screws using a Phillips #0 screwdriver.

Step 2



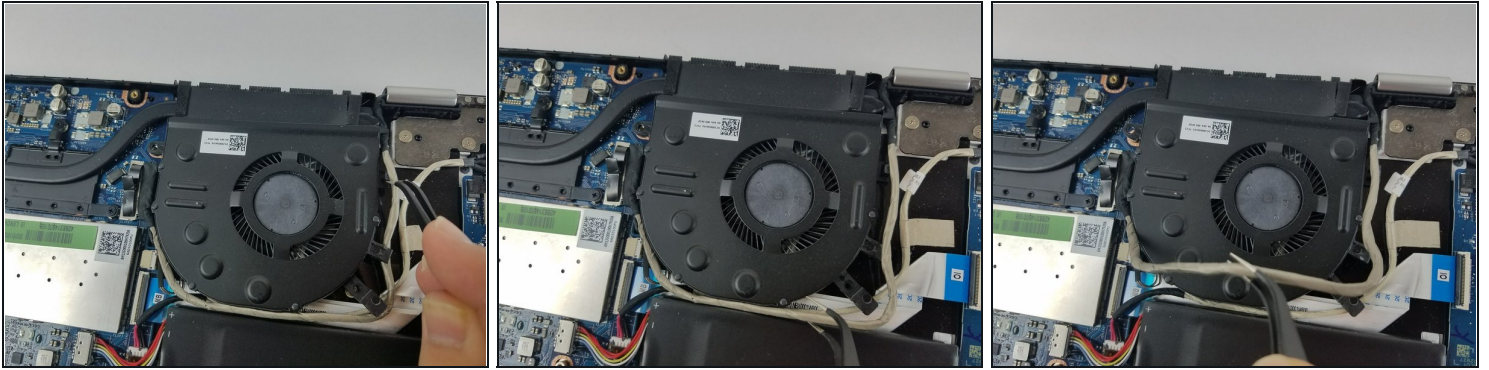
- Pry the back cover off by inserting the plastic opening tool at the hinges and wedging it between the Back cover and the body.
- Follow along the back edge with the plastic opening tool, lifting the cover off as you go. It is normal to hear snapping/clicking sounds as the back cover is held on by clips.
- Remove the cover.

Step 3 — Cooling Fan



- Remove the two 4 mm Phillips #0 screws which mount the fan.

Step 4



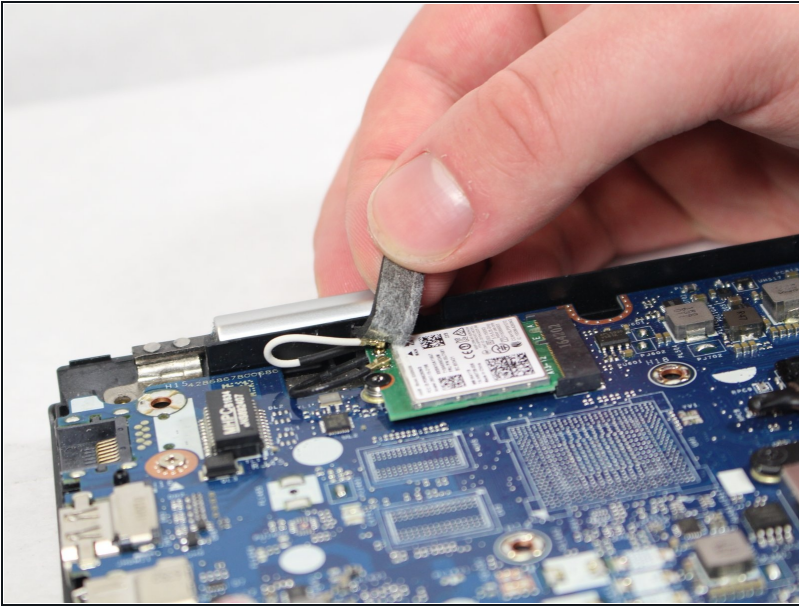
- Using the Precision Tweezers, remove the 2 gray wires around the fan from their clips.

Step 5



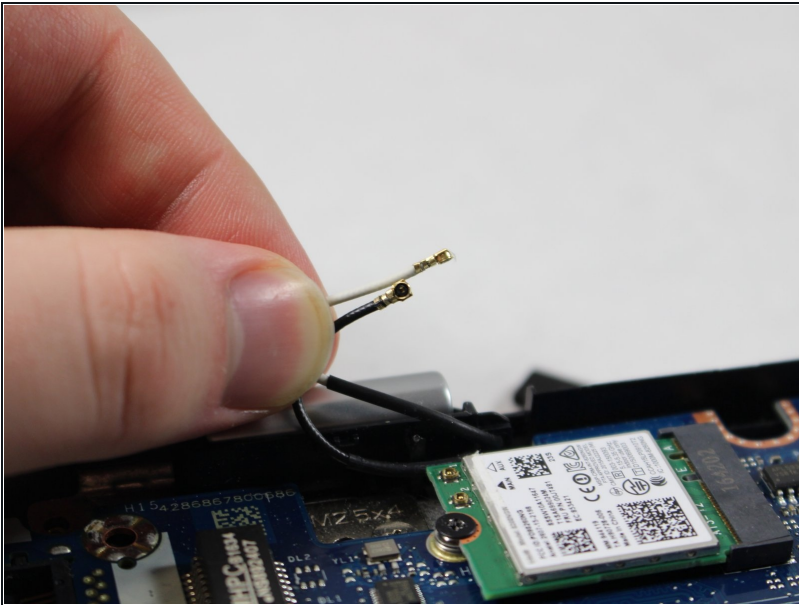
- Use 2 plastic opening tools to remove the fans power wire from the Mother board and remove the fan.
- Lift the cooling fan out of the laptop.

Step 6 — Wifi Card



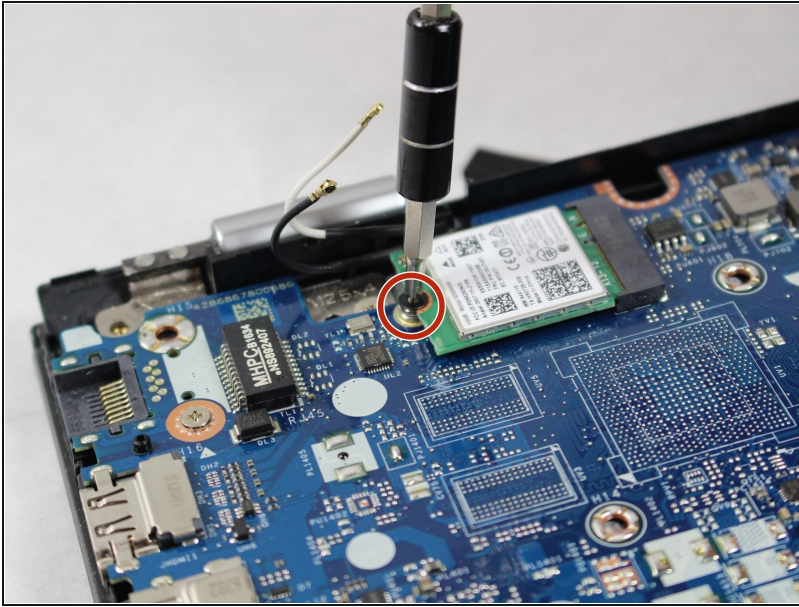
- Remove the foam on the WIFI card.

Step 7



- Remove the wires attached to the WIFI card.

Step 8



- Unscrew the 4mm screw holding wifi card.

Step 9 — Motherboard



- Unscrew the twelve 4mm screws with a #0 Phillips screwdriver.

Step 10



- Remove the motherboard.
- ☑ The motherboard will be in place when the screw holes line up.

To reassemble your device, follow these instructions in reverse order.