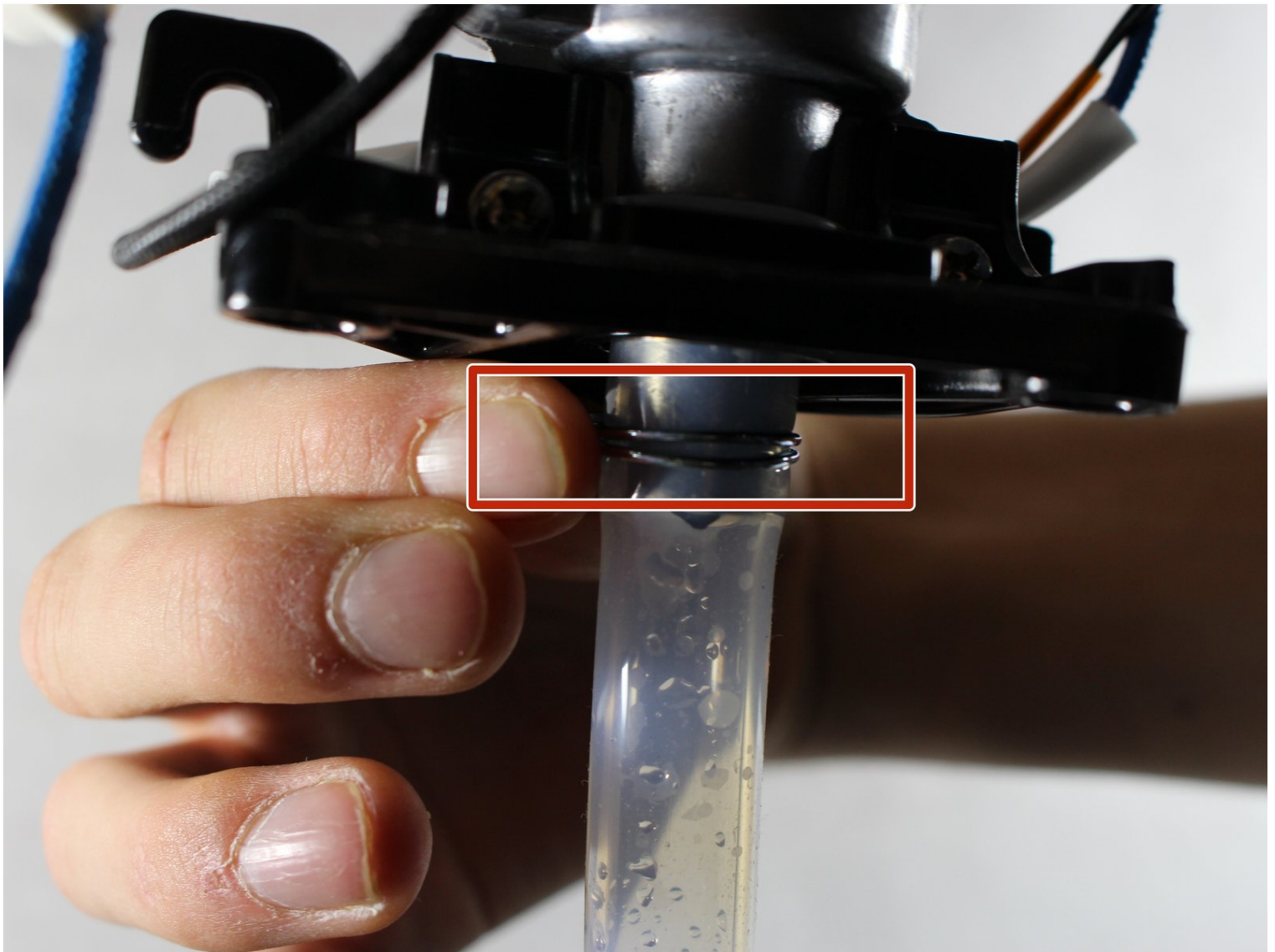


Ninja Coffee Bar® Single-Serve System Hot Water Tubing Replacement

Tubing is prone to leaking and replacing the...

Written By: Kyle Gustafson



INTRODUCTION

Tubing is prone to leaking and replacing the hot water tubing may eliminate any problems you may be facing with your device or prevent problems down the road. Replacing the main hot water tube involves removing screws on both the top and bottom panel, so it may be a good idea to use the iFixit magnetic pad to keep track of loose screws.

TOOLS:

Phillips #1 Screwdriver (1)

iFixit Opening Tool (1)

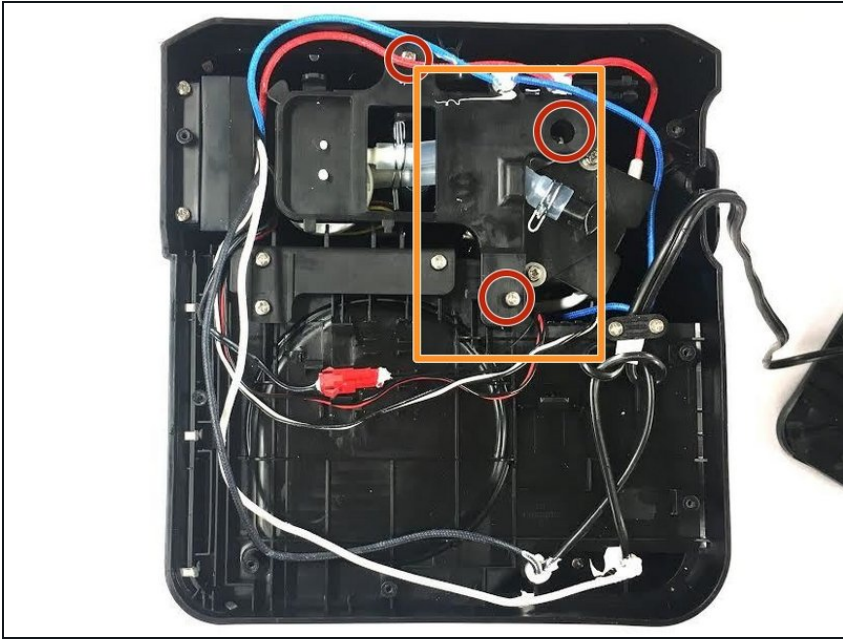
Wire Stripper (1)

Step 1 — Valve Tubes



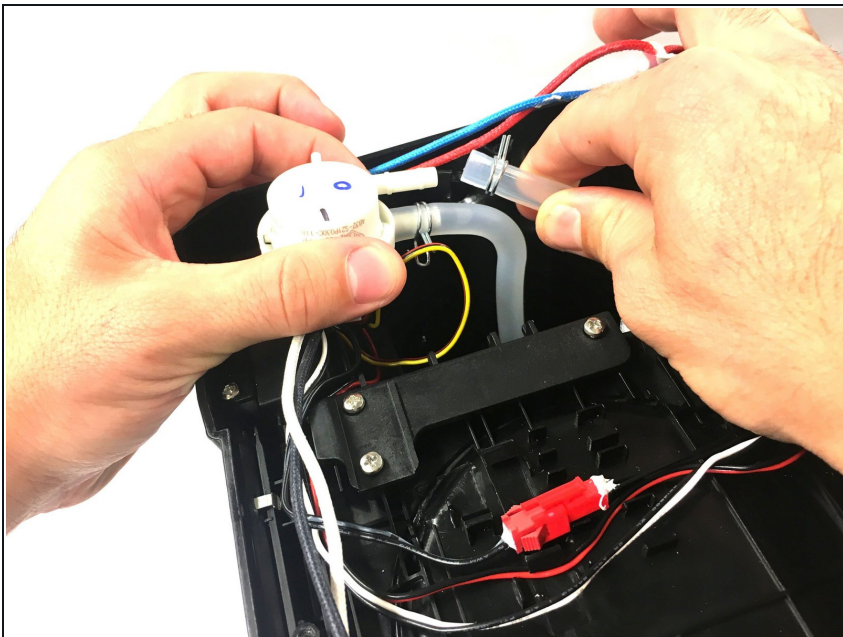
- Remove the eight 6 mm screws using the Phillips #1 screwdriver.
- Remove the bottom cover.

Step 2



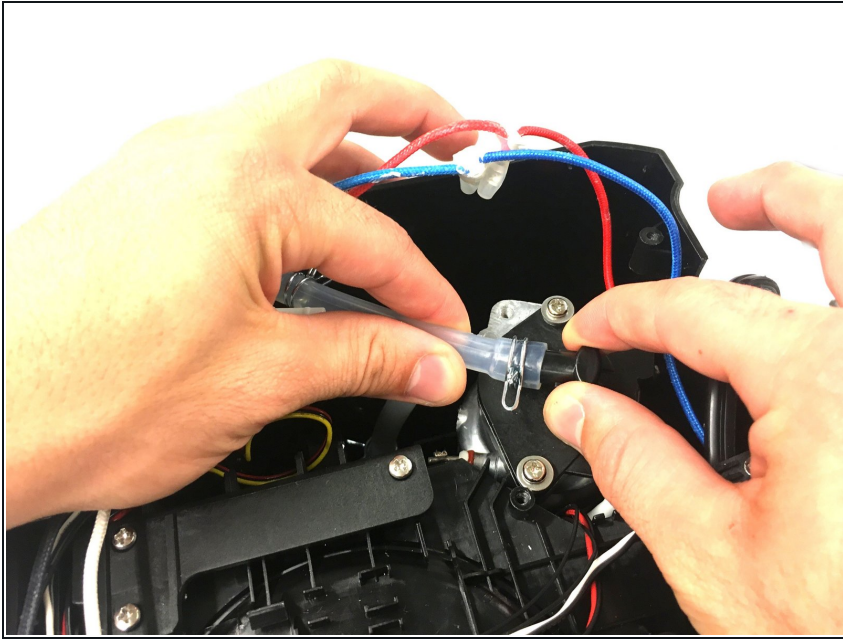
- Remove the three 6 mm screws with the Phillips #1 screwdriver.
- Remove the plastic cover.

Step 3



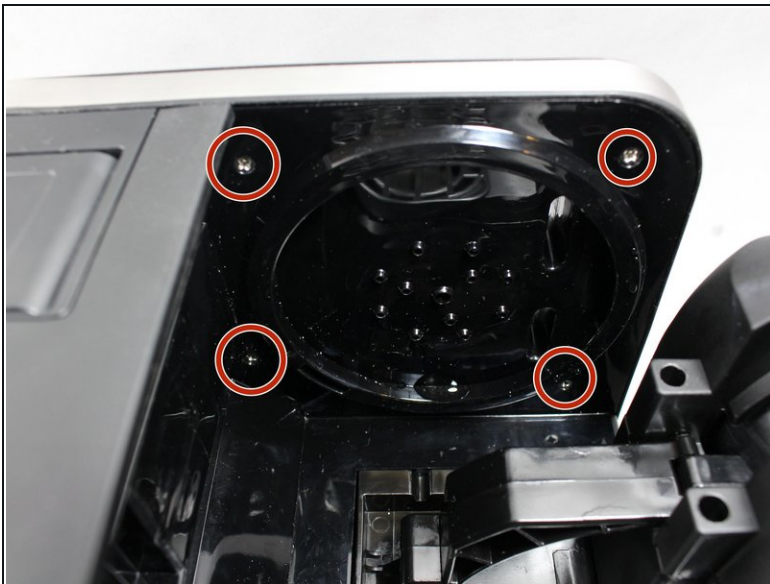
- Detach the valve tubes from the valve by squeezing the pins and pulling them away from the valve.

Step 4



- Detach the valve tubes from the device by pinching the pins and sliding the valve tubes off.

Step 5 — Water Heater



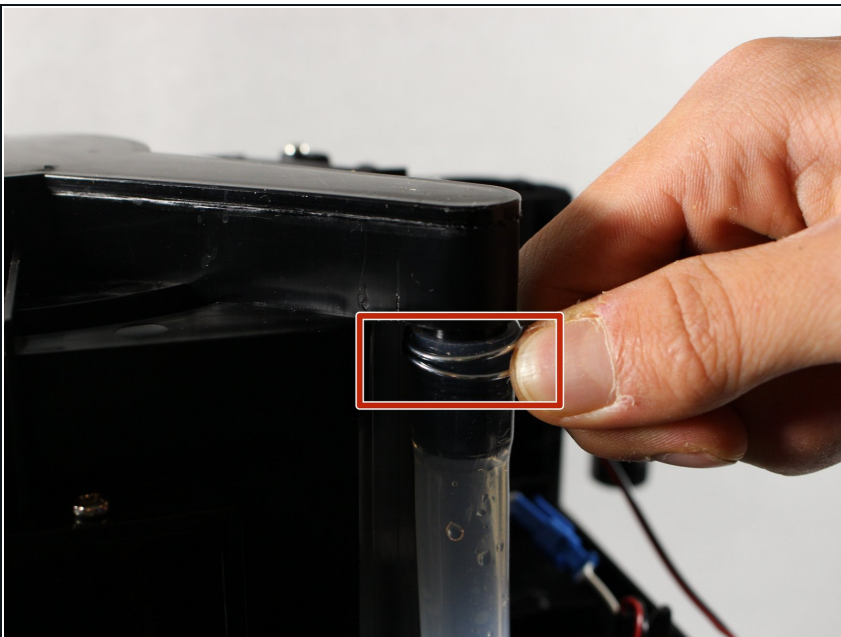
- Unscrew the four 6mm #1 Phillips head screws from the underside of the basket area.
- Remove the single 6mm #1 Phillips-head screw from the side of the unit.

Step 6



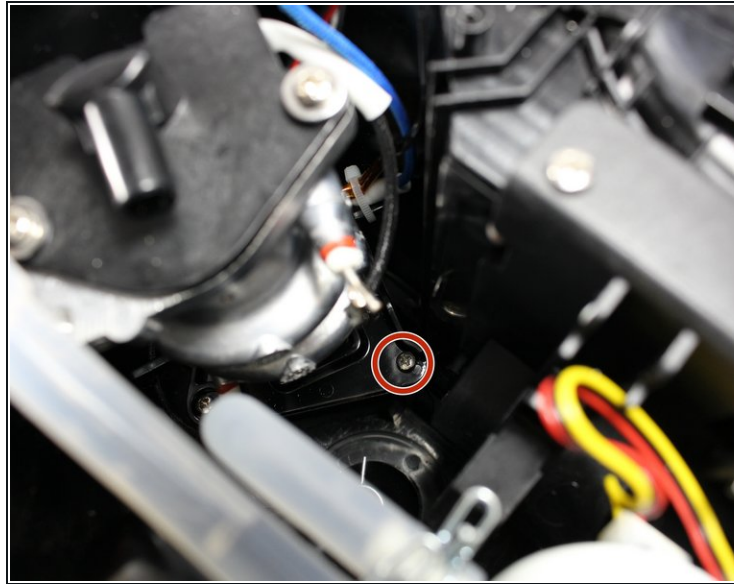
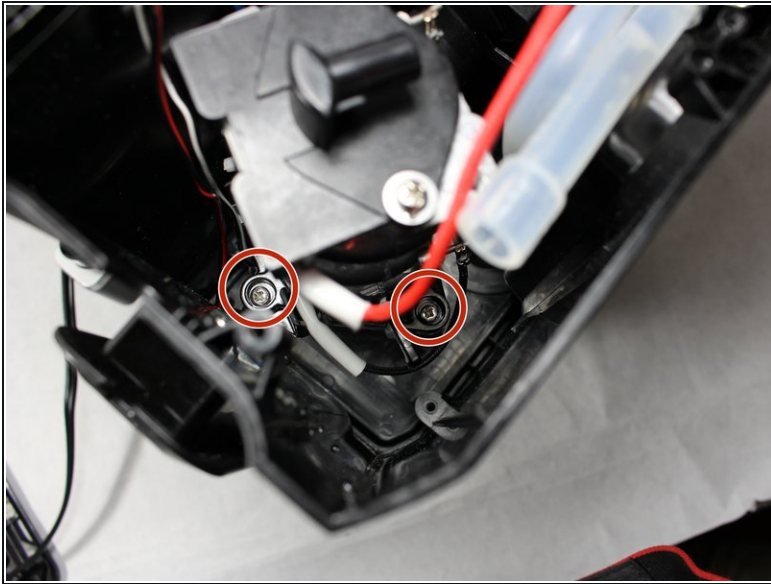
- Slowly pry the upper cover away from the unit on top of the brew basket, and near the base of the water reservoir along the side of the upper cover.

Step 7



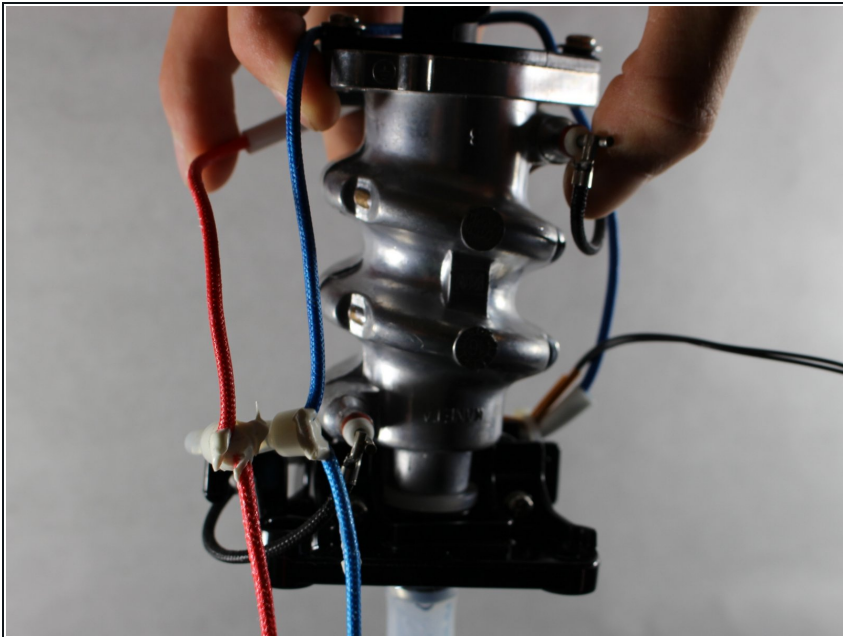
- Separate hose from upper nozzle by squeezing the clamp and pulling the hose down slightly.

Step 8



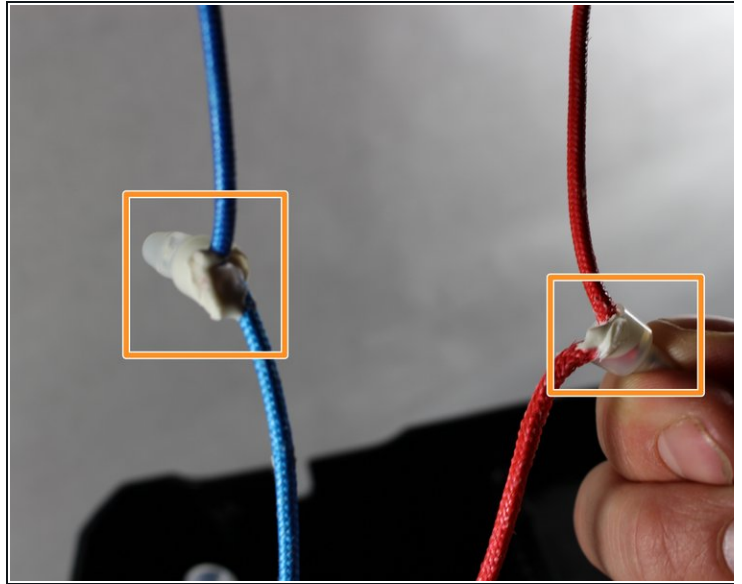
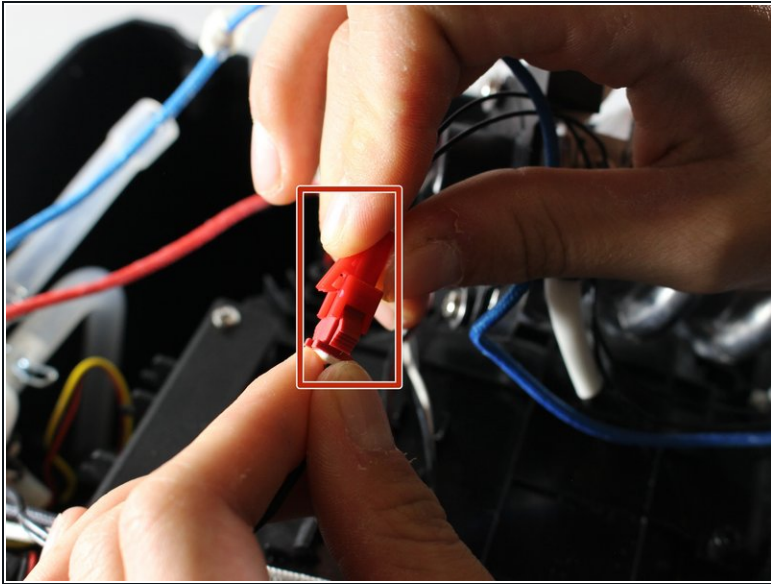
- Using a #1 Phillips head screwdriver with an extension, remove three 6mm screws holding the heater to the unit.

Step 9



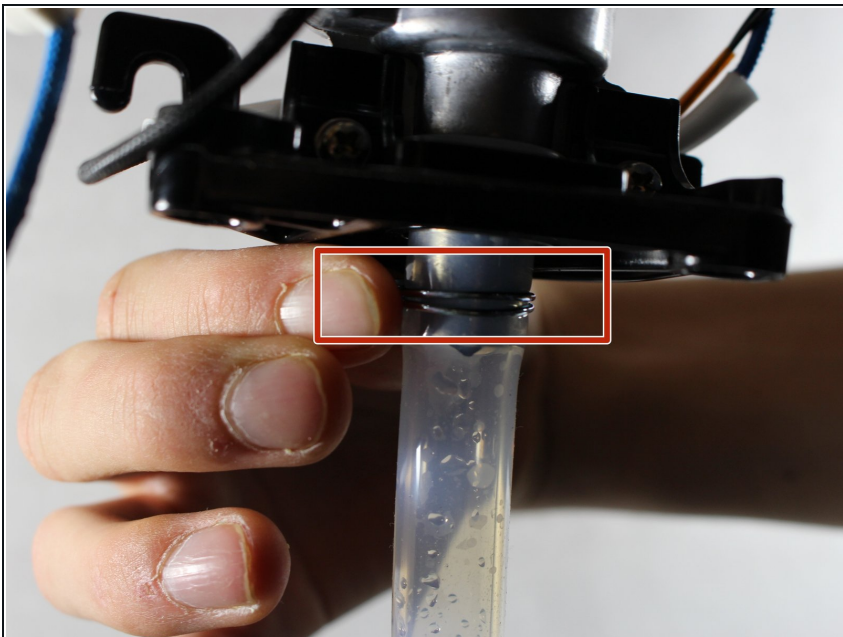
- Remove heater from unit.

Step 10



- Squeeze clip and separate signal wiring.
 - Using wire stripper/crimping tool, uncrimp wiring connectors
- ⚠ Wiring connectors are sealed together making them difficult to disconnect. Cutting and rewiring should be considered.

Step 11 — Hot Water Tubing



- Squeeze connector and pull tubing away from heater.
- Inspect tubing for damage and/or weak spots and replace if necessary.

To reassemble your device, follow these instructions in reverse order.