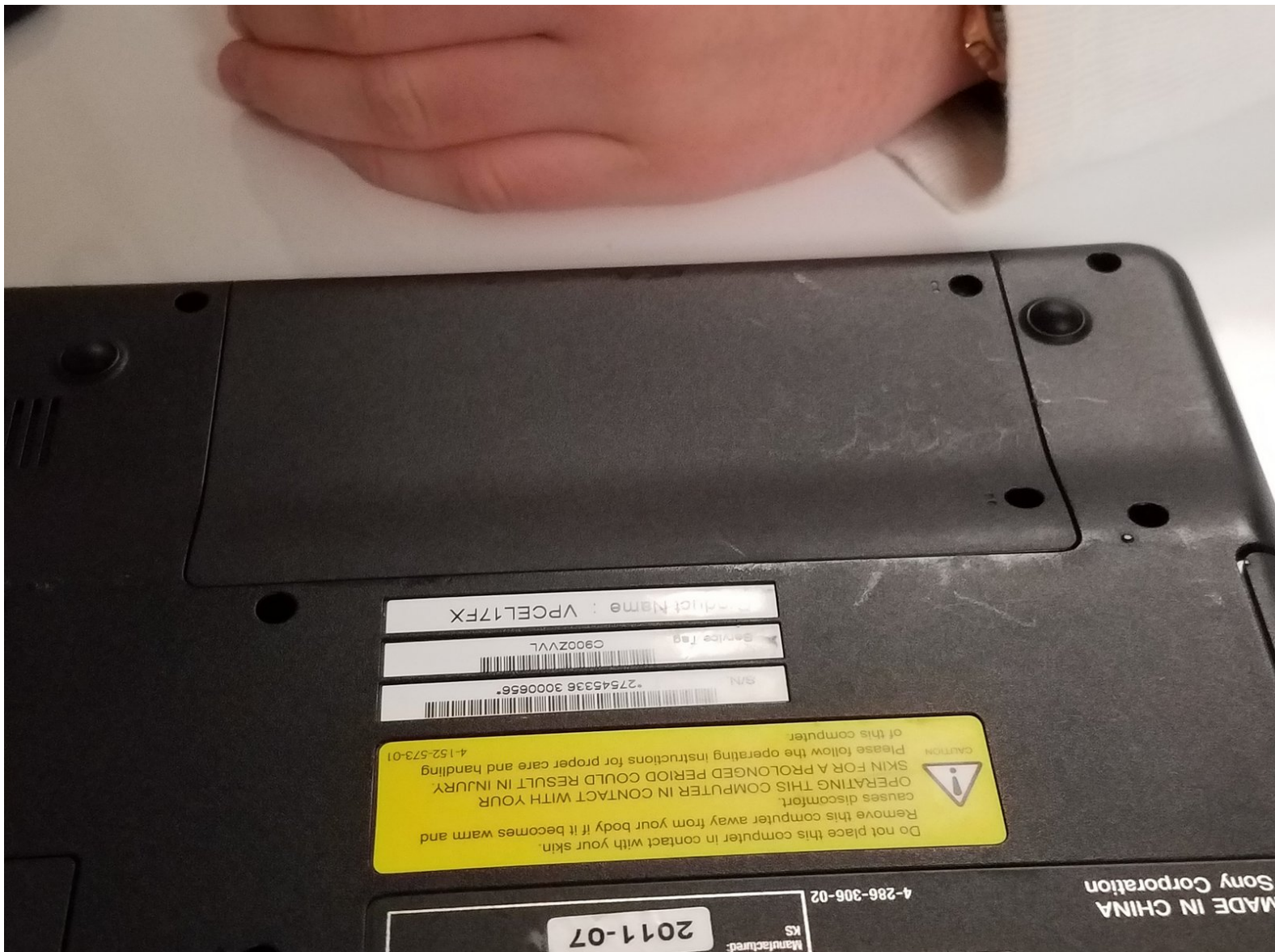




Sony Vaio VPCEL17FX Hard Drive Replacement

Installing or replacing a hard drive is a...

Written By: Alberto Rosas



INTRODUCTION

Installing or replacing a hard drive is a fairly simple procedure. It only involves a total of 6 screws and up to a 320 GB HDD.



TOOLS:

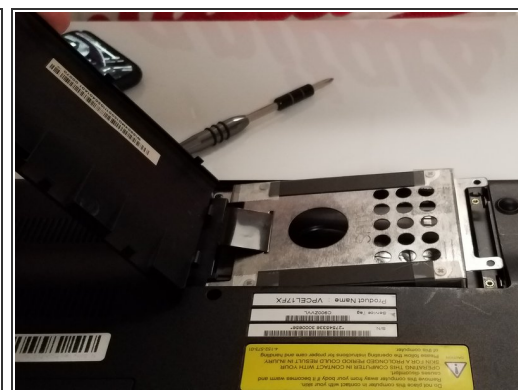
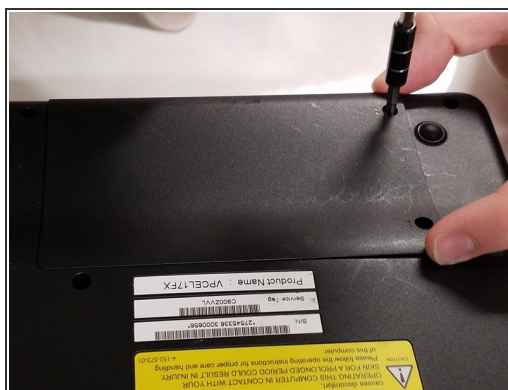
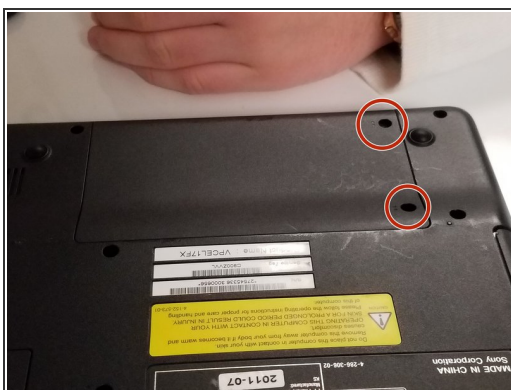
- [Phillips #00 Screwdriver](#) (1)



PARTS:

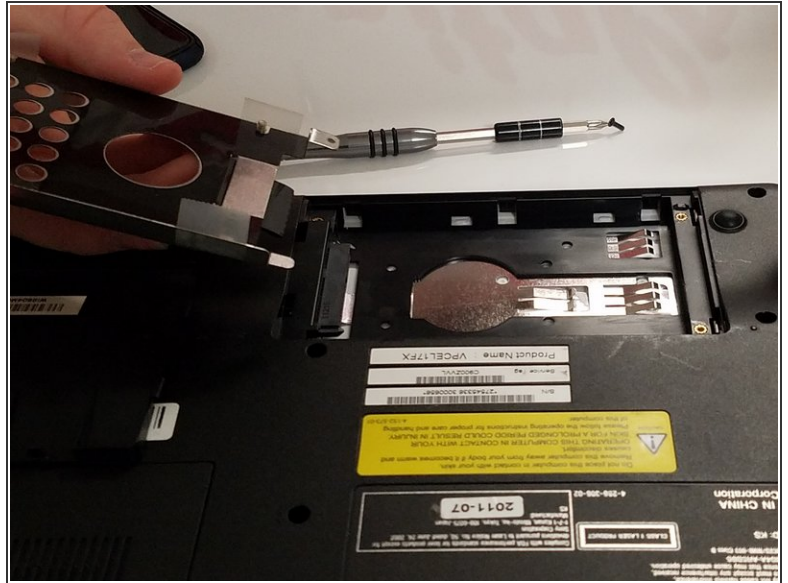
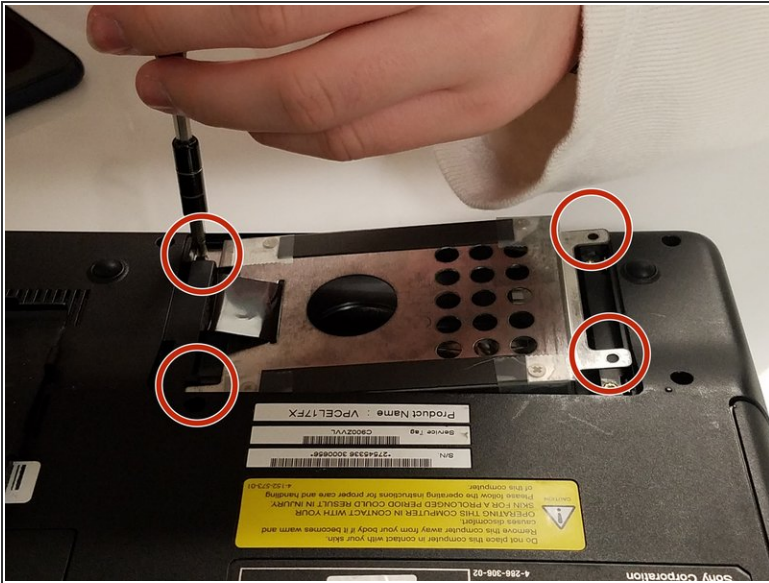
- [320 GB Hard Drive](#) (1)

Step 1 — Hard Drive



- First, locate the hard drive slot on the under side of the laptop.
- Unscrew the screws using your Phillips #00 screwdriver.
 - ☑ Set the two screws aside so you can screw them in later on when you're finished.
- This should reveal a small metallic place holder that your hard drive belongs.

Step 2



- Unscrew the 4 hard drive bracket screws.
- Once the screw is undone you can pull the place holder back to find the slot where the actual hard drive belongs.
- ☑ Remember to set aside the screw so you can correctly install the hard drive.

The installation/replacement is a very easy task that can be done by anyone.