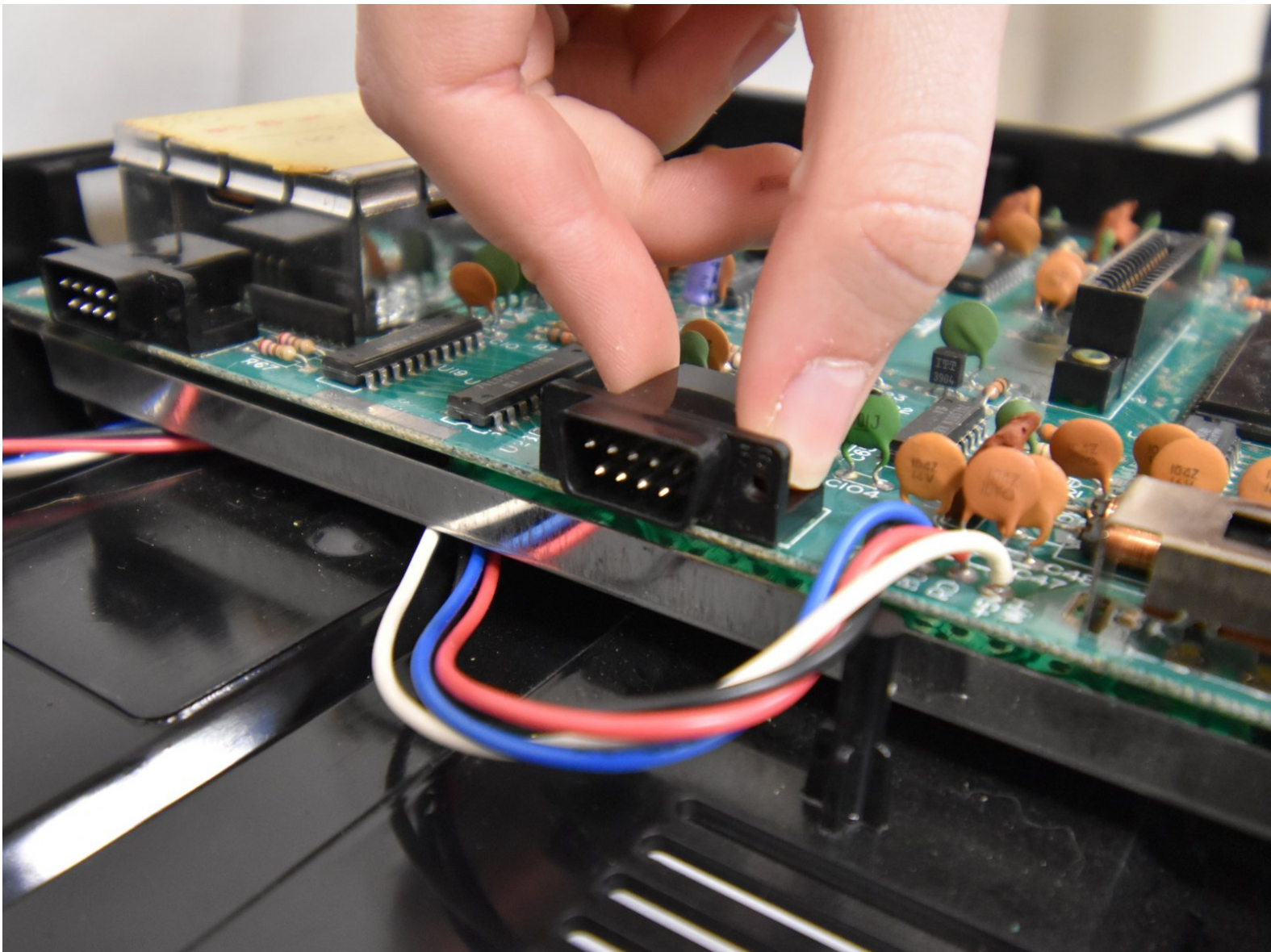




# ColecoVision Controller Port Replacement

This guide will teach you how to remove and replace the controller port on the ColecoVision.

Written By: Bobby



---

## INTRODUCTION

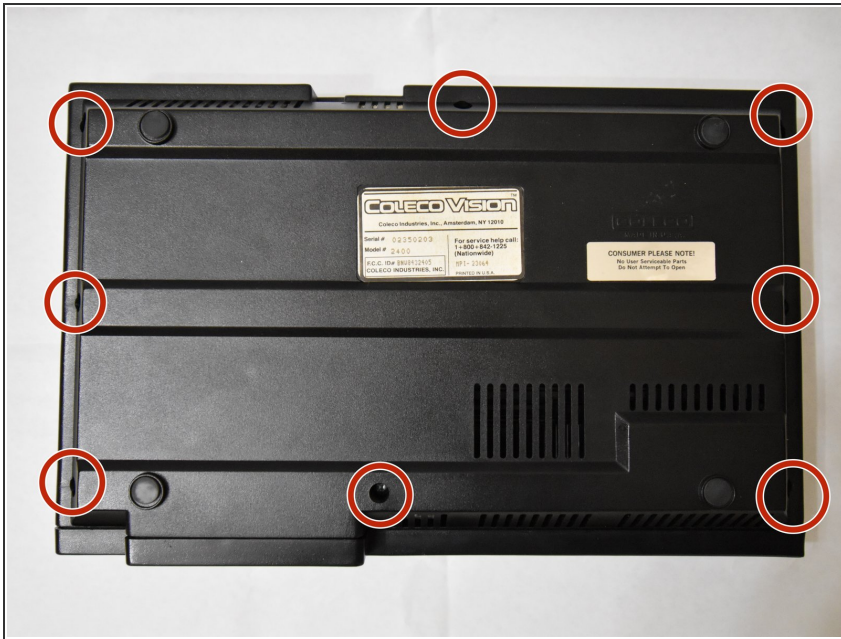
The purpose of this guide is to communicate steps on how to replace or repair the controller ports on a ColecoVision.

---

### TOOLS:

- [Metal Spudger](#) (1)
  - [Soldering Iron](#) (1)
  - [Phillips #1 Screwdriver](#) (1)
-

## Step 1 — Controller Port



- Flip the ColecoVision over with the pegs facing the ceiling.
- Remove the eight 15mm screws holding the bottom of the ColecoVision in place using the Phillips #1 screwdriver.

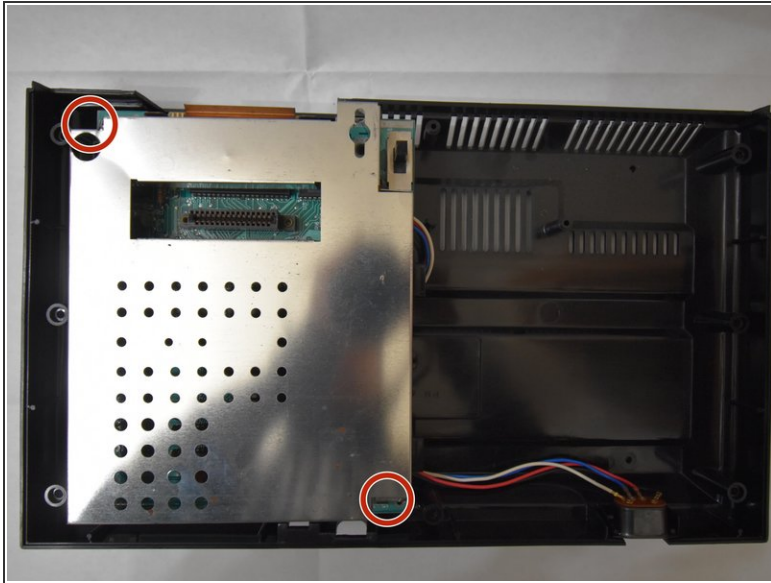
## Step 2



- Carefully remove the bottom of the ColecoVision out of the top.
- I would recommend running a metal spudger along the rim of the case to remove the bottom.

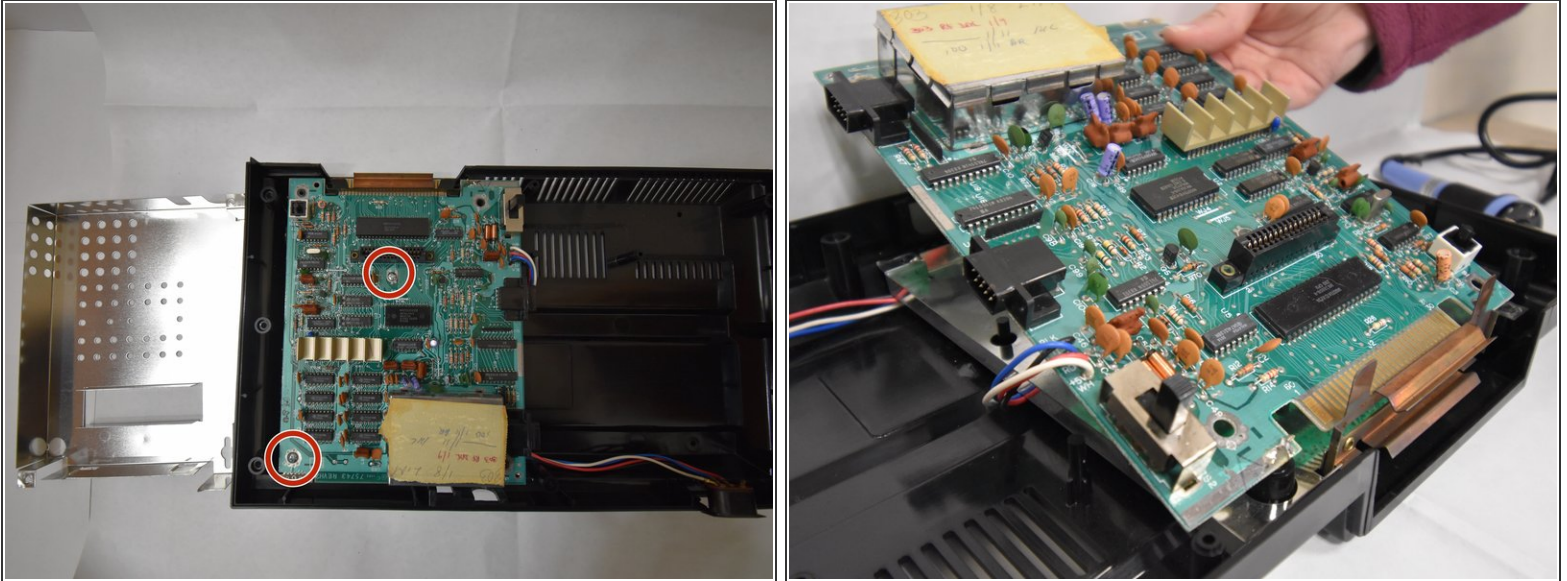


## Step 3



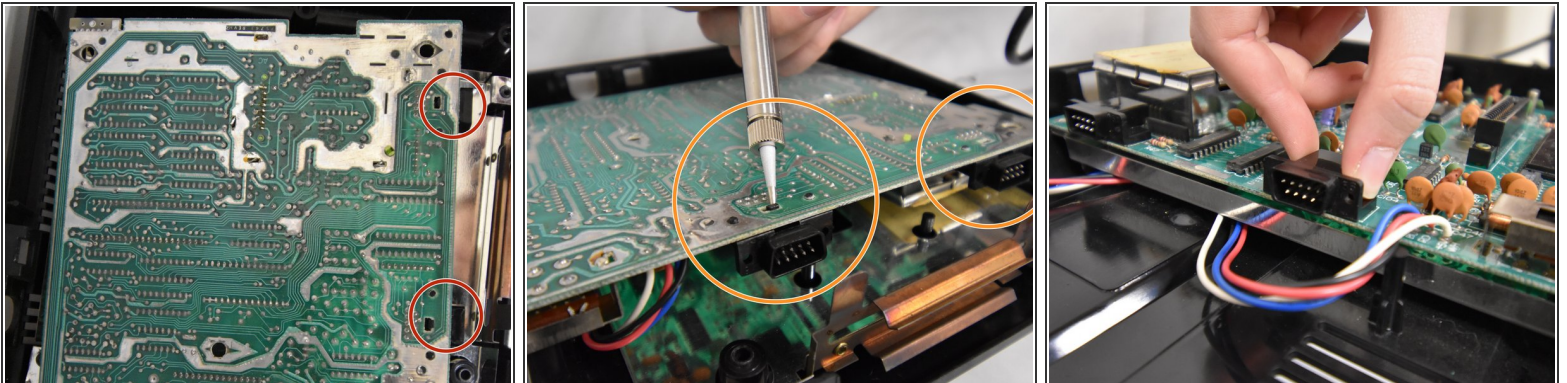
- Remove the two 15mm screws holding the casing in place using the Phillips #1 screwdriver.
- Remove the casing and put it to the side.

## Step 4



- Remove the two 15mm screws on the motherboard with a Phillips #1 screwdriver.
- Pull the entire motherboard towards the back of the system and carefully lift the entire motherboard.

## Step 5



- Flip the motherboard over and locate the two controller ports.
- Using a soldering iron, desolder the controller ports.
  - ① [Refer to this soldering technique guide for reference.](#)
- After waiting for controller ports to cool down, flip motherboard back over and carefully lift controller ports to remove.

This document was generated on 2020-11-28 07:07:17 AM (MST).

To reassemble your device, follow these instructions in reverse order.