



Lenovo ThinkPad Edge E420s Optical Drive Replacement

Replace your optical drive in order to restore functionality to your Lenovo ThinkPad Edge E420s.

Written By: Keyadri Summerlin



INTRODUCTION

If you need to replace the optical drive, use this guide to access and remove the optical drive from this device. For this guide you will need a plastic opening tool, a Phillips #0, #00, and #000 screwdriver. This repair may be needed either as a prerequisite to replacing other parts or in order to fix issues such as frequent, but irregular crashes, error messages, or disappearing or scrambled files.




TOOLS:

- [Phillips #00 Screwdriver](#) (1)
 - [Phillips #0 Screwdriver](#) (1)
 - [iFixit Opening Tools](#) (1)
 - [Phillips #000 Screwdriver](#) (1)
-

Step 1 — Hard Drive



 There is no external access to the battery. Please make sure the at the battery has been drained or disabled through BIOS before beginning.

- Flip the device over.


Step 2



- Use a Phillips #00 screwdriver to remove one M2 x 3mm screw from the side of the device.

Step 3



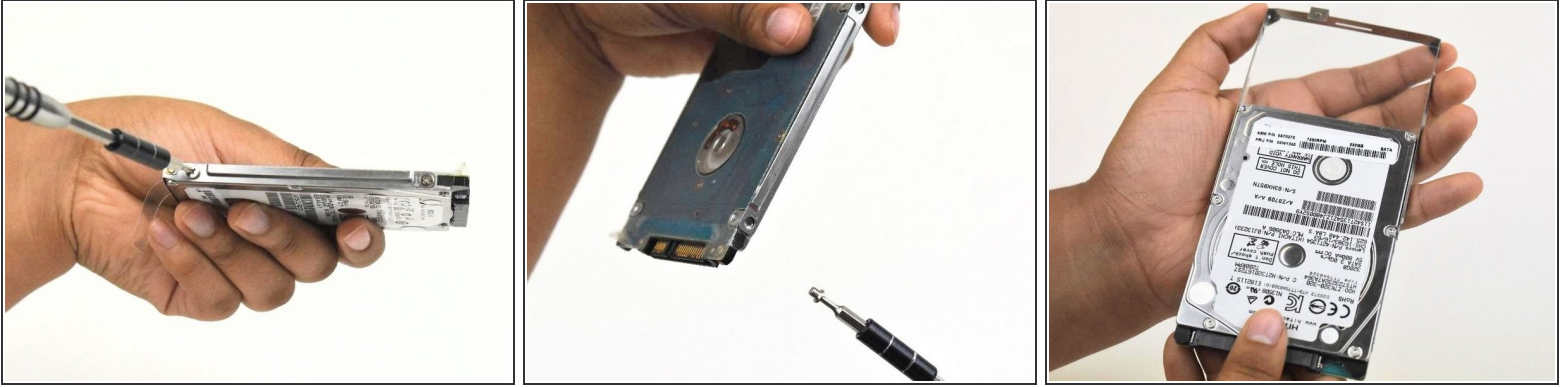
- Swing the cover out slightly like a hinge.
 - Pull the cover directly away from the case towards the base of the laptop.
 - Lift the cover up and away from the device to remove it.
-  You may hear a slight pop when you pull the cover off.


Step 4



- Use the clear tab to slide the hard drive out of the device.

Step 5



- To replace the hard drive, remove the four M2 × 4mm wafer-headed screws on the sides of the hard drive case using a Phillips #00 screwdriver.
- Slide the old hard drive directly out.
-  When reassembling, make sure the hard drive is securely in the case before beginning.

Step 6 — Top Case



- Use a Phillips #0 screwdriver to remove eight M2 × 3 mm screws near the front opening and scattered across the bottom of the laptop.
- Remove three M2x3 mm screws using a Phillips #00 screwdriver from the base of the laptop near the opening.

Step 7



- Remove the M3 x 2mm screw from the hole left by the hard drive using a Phillips #00 screwdriver.

Step 8



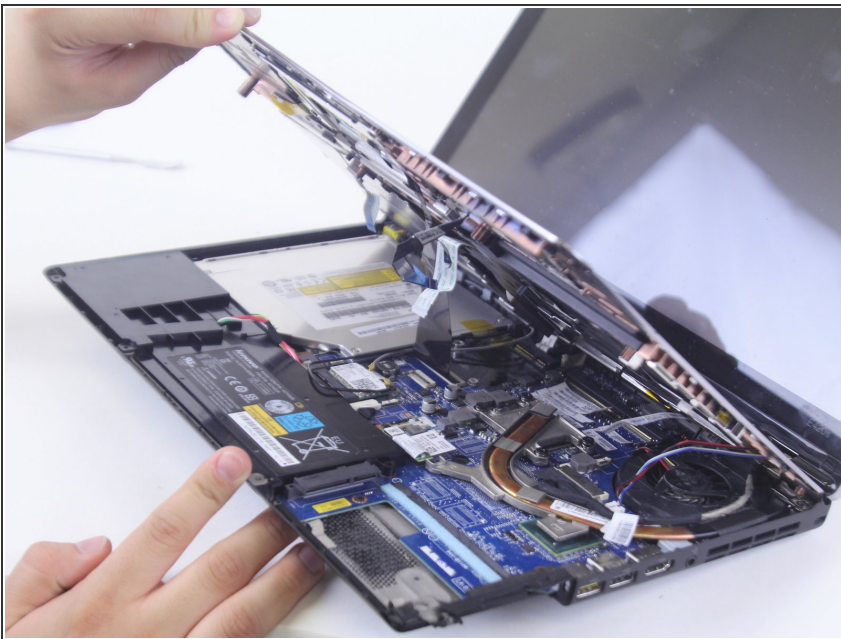
- Flip over the device.
- Open the device normally.

Step 9



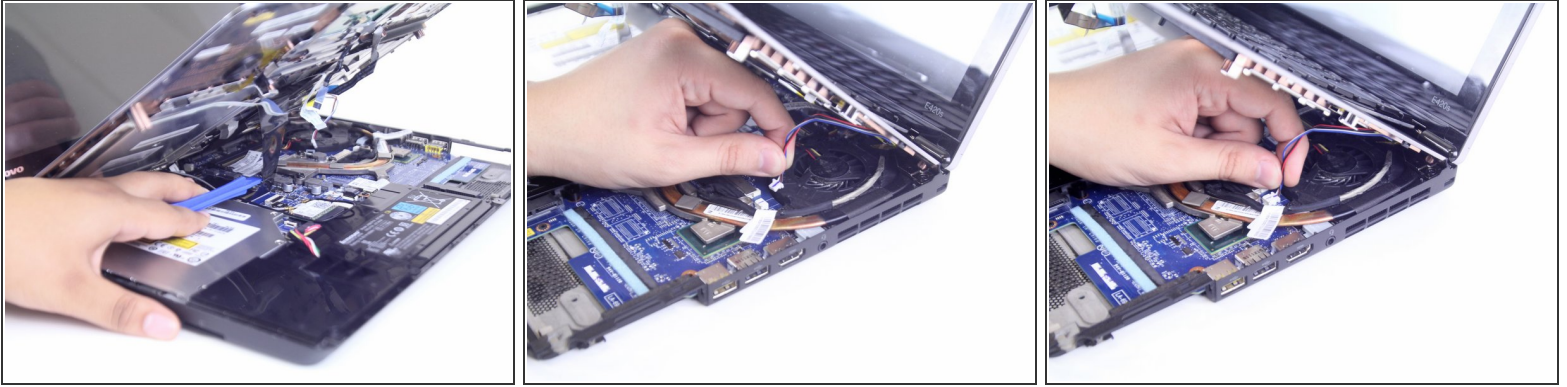
- Wedge the plastic opening tool between the upper and lower halves of the lower case.
- Lift the end of the opening tool slowly until the case separates.
- ⓘ Hearing a small popping or cracking noise during this step is normal

Step 10



- Lift the upper half of the case up slowly.
- ⚠ Be sure not to yank any of the wires connected to the case as this could damage them.

Step 11



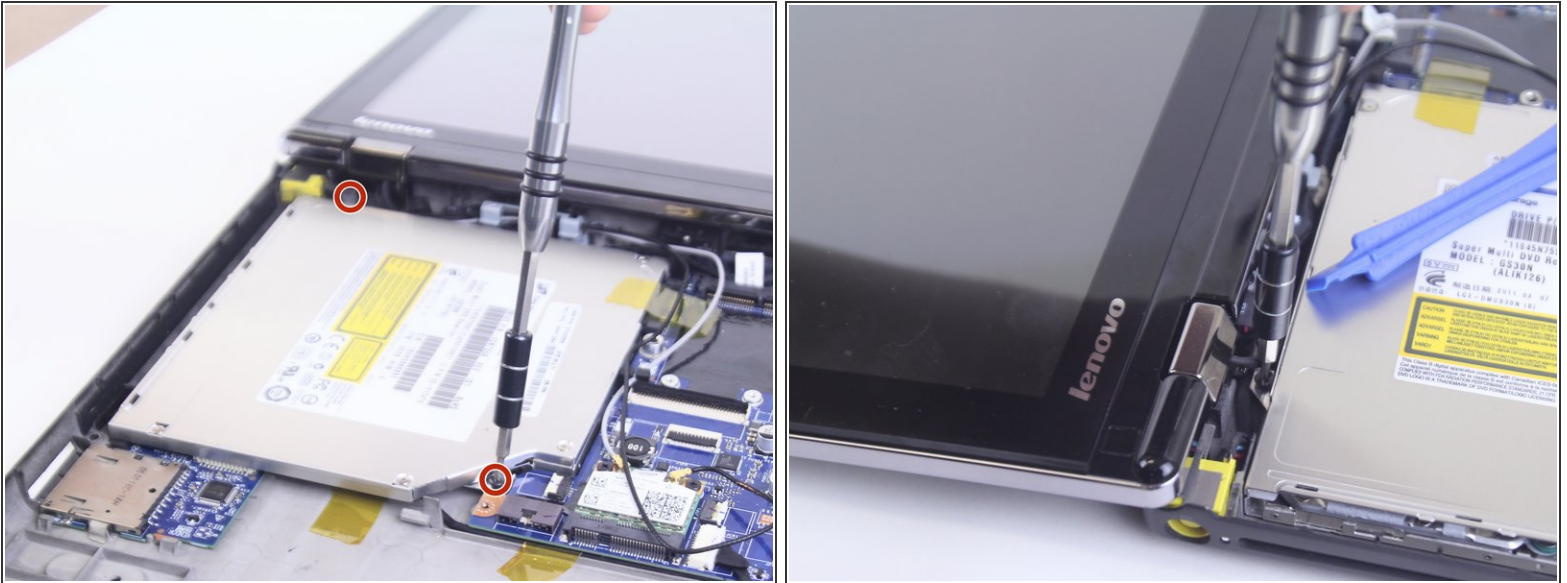
- Locate and disconnect the 4 ribbon wires from the top case.
 - Locate and disconnect the two additional connecting wires.
 - ☑ Some wires may be connected by a clamp. In order to remove the clamp, press upwards on the lever attached to the connector
- ⚠ Be careful to not yank on the wires when disconnecting them as they are easily damaged.

Step 12



- Lift the unattached case away from the device and place it to the side.
- ☑ When reassembling ensure that all parts of the case are properly aligned.

Step 13 — Optical Drive



- Remove the two M2 x 3mm securing the the optical drive to the device using a Phillips #000 screwdriver.

Step 14



- Slide the optical drive away from the motherboard in order to remove it.

To reassemble your device, follow these instructions in reverse order.

This document was generated on 2020-11-28 07:05:27 AM (MST).

