



# LeapFrog LeapPad Ultimate LCD Screen Replacement

The screen of any device is one of the most...

Written By: Avery Dillon



# INTRODUCTION

The screen of any device is one of the most delicate parts. This guide will walk you through how to replace your LCD screen.

## TOOLS:

Phillips #1 Screwdriver (1)

iFixit Opening Tool (1)



Metal Spudger (1)

Small Plastic Spudger (1)

Tweezers (1)

## Step 1 — Back Panel



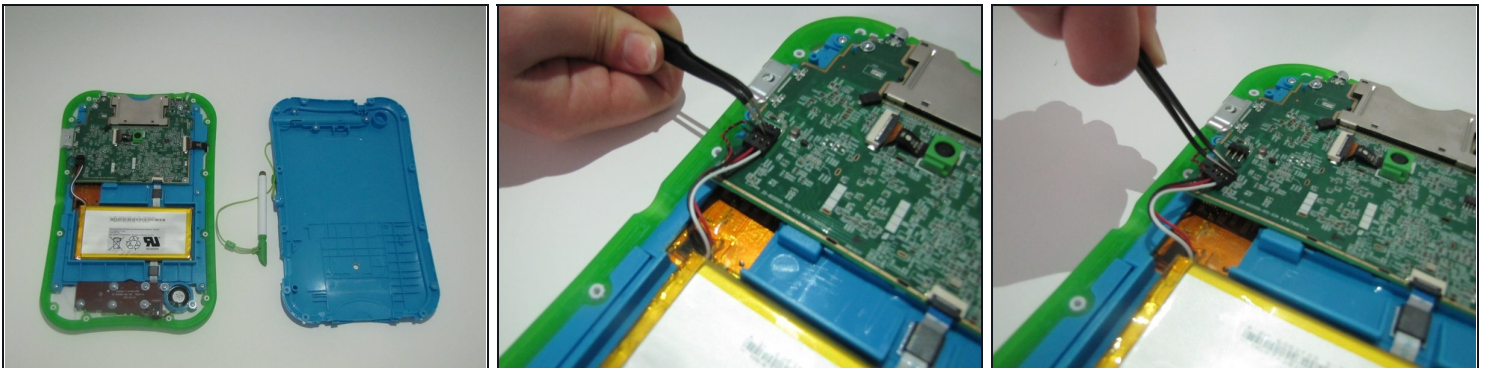
- Flip over the Pad to its back side to begin the removal of the back panel.
  - Begin by removing the blue rim along the edge of the device. It runs along the green silicone lining.
-  This is very difficult to remove , so do be patient. To help remove the seal, both a metal spudger and plastic opening tool may be used.
-  Remove the pen from its place before starting to avoid tangling.

## Step 2



- Once the blue rim is removed, the 12 screws will be visible.
- Use the Phillips #1 screwdriver to unscrew all 12 screws.

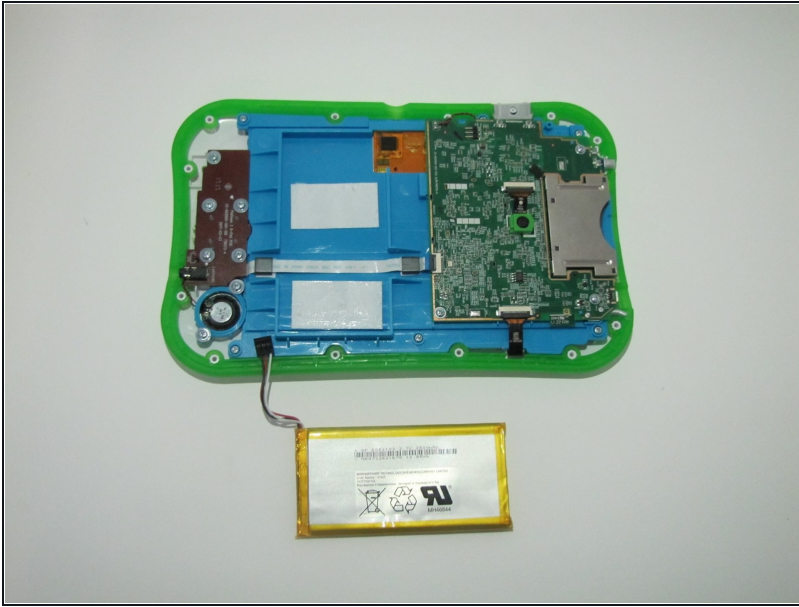
## Step 3 — LCD Screen



- The segment connecting the battery to the motherboard will consist of red, white, and black wires.
  - There is a small notch on the segment. Use the curved [tweezers](#) to pull the notch in the direction of the battery. this will disconnect the battery from the motherboard.
- ① The battery is the bright orange rectangle.
- ① The motherboard is the large dark green surface.

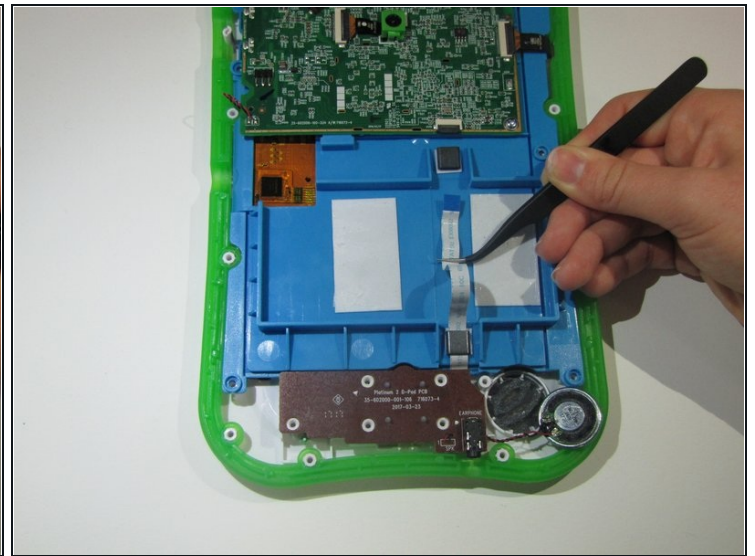


## Step 4



- Carefully remove the battery from its place and set aside.
- Removing the battery will fully expose a white and blue ribbon cable that runs beneath the battery.
- The ribbon cable must be disconnected from the motherboard and removed from the panel.

## Step 5



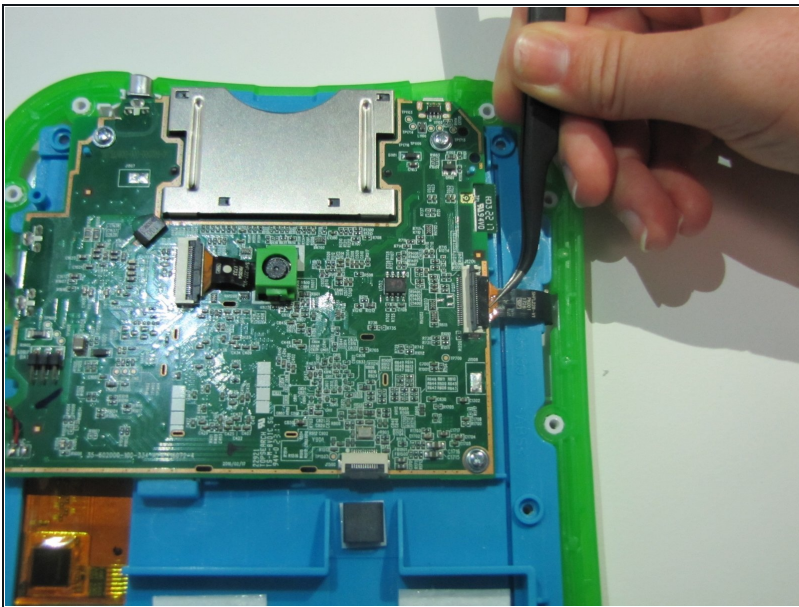
- The ZIF connector which connects the ribbon cable and the motherboard has a small flap on the top.
- Use the curved tweezers to flip the flap up.
- Once it is disconnected, carefully pull the ribbon cable through the 2 black plastic arches holding it down.

## Step 6



- Use a Phillips #1 screwdriver to unscrew the 7 screws on the speaker.
- 5 will be on the brown part and 2 on the circular blur part.
- Once it is unscrewed completely, remove the speaker and set aside.

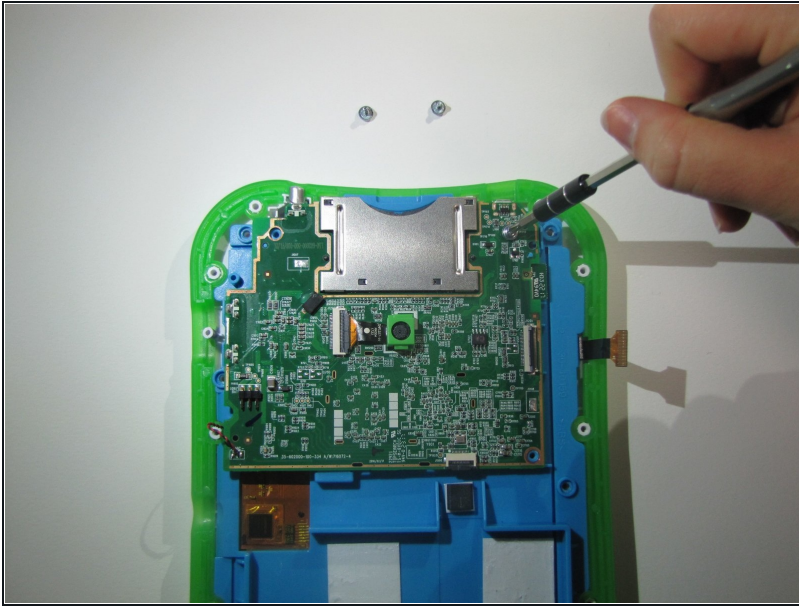
## Step 7



- An orange and black ribbon cable connects the motherboard and the area to the side of the panel.
- There is a switch on top of it.
- Use the curved tweezers to flip the switch.

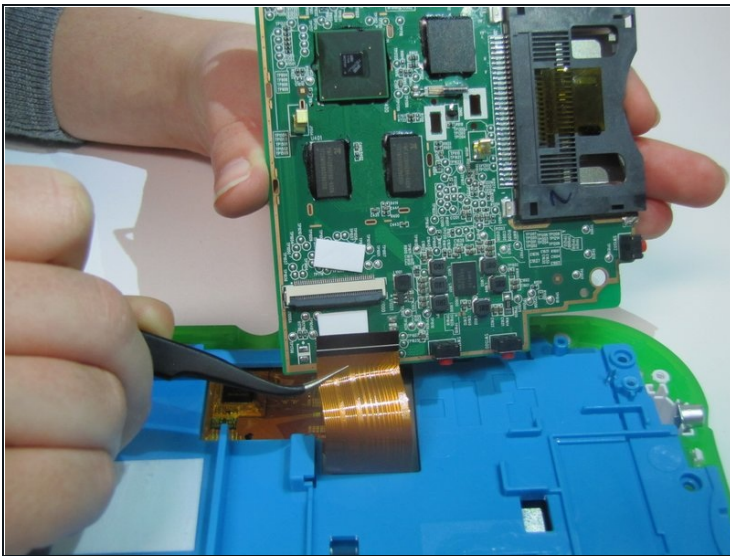


## Step 8



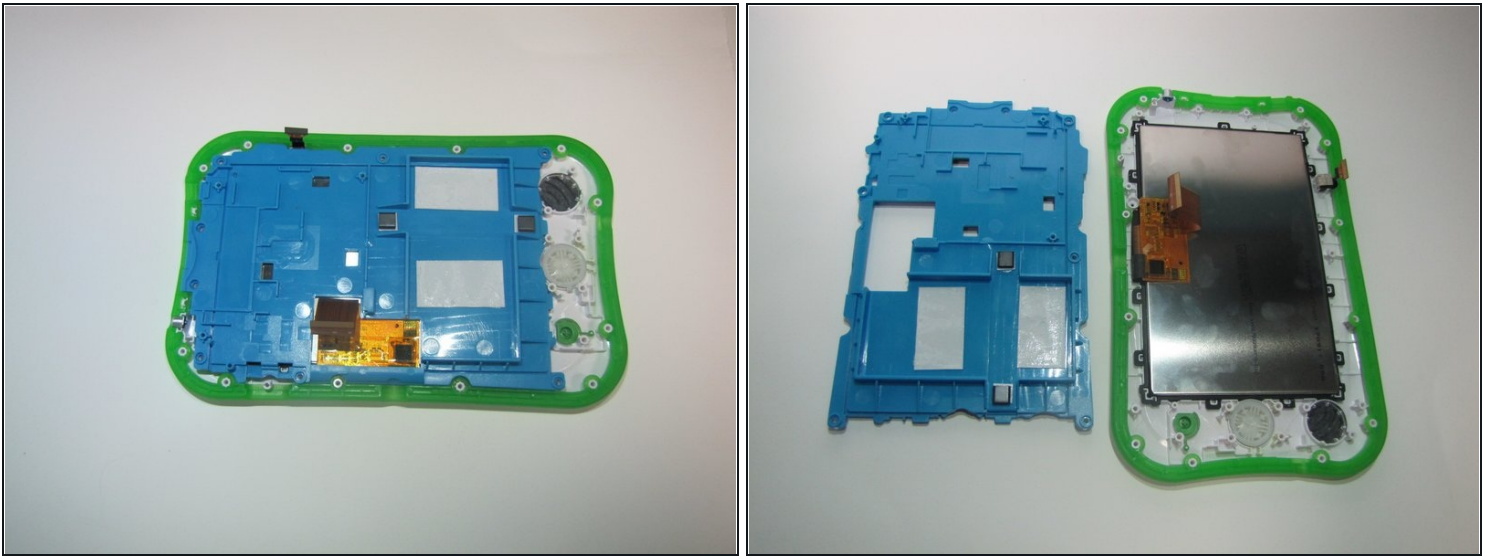
- Unscrew the 3 screws on the motherboard with a Phillips #1 screwdriver.

## Step 9



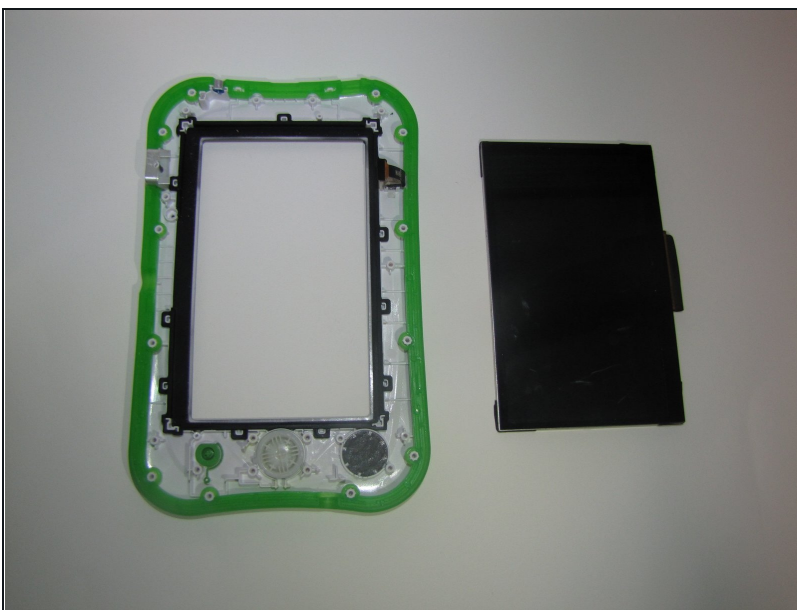
- Flip the motherboard over to expose the underside.
- There is a wide black ribbon with a switch. Flip the switch and set aside the motherboard.

## Step 10



- Along the side of the blue panel are 6 screws. Unscrew each of the screws with a Phillips #1 screwdriver.
- Remove the panel and the remainder of its contents and set aside.

## Step 11



- The screen is now exposed and can be removed and replaced.

---

To reassemble your device, follow these instructions in reverse order.

