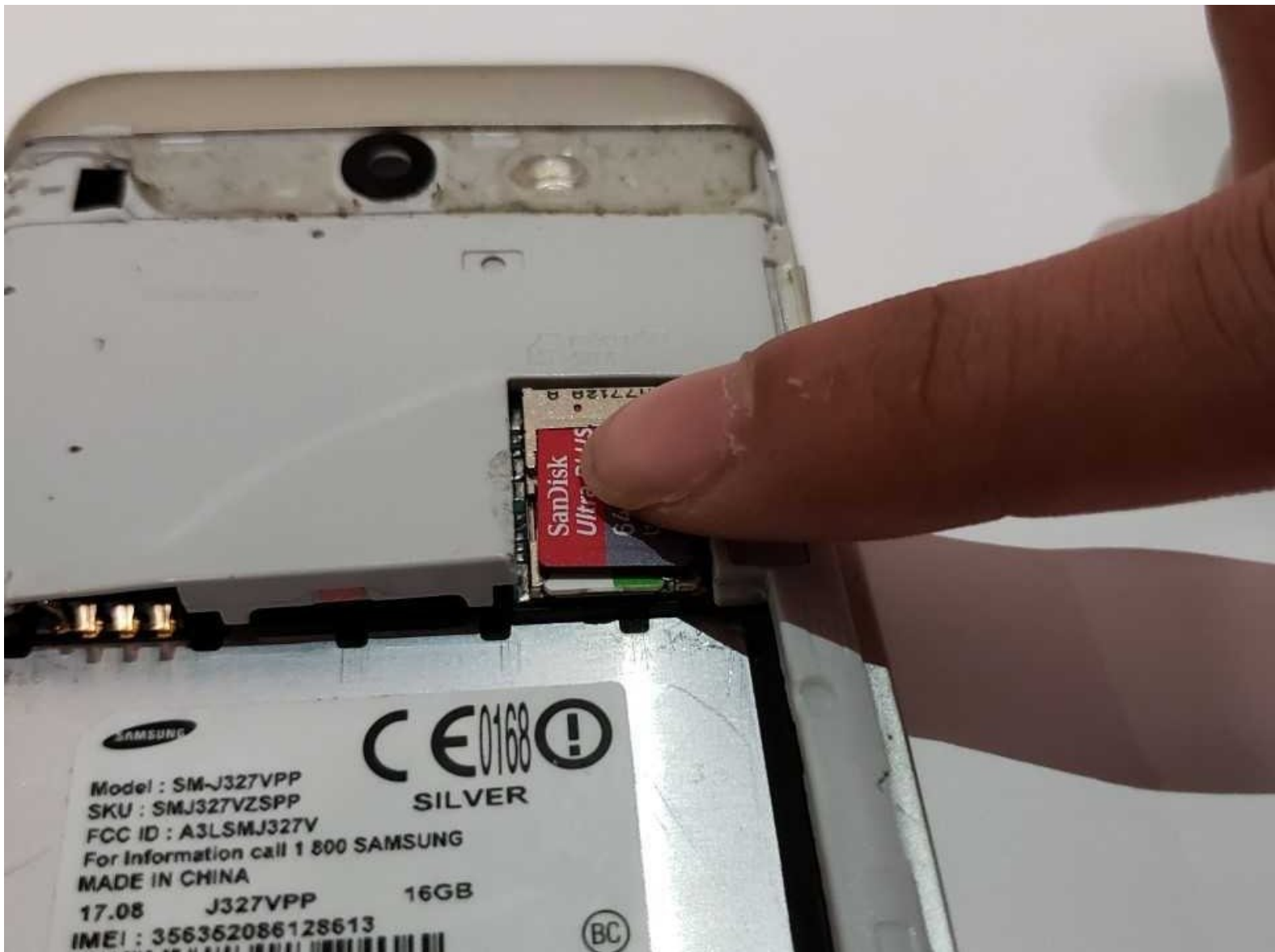




Samsung Galaxy J3 Mission SD and SIM Cards Replacement

How to replace both the SD and SIM cards for the Samsung Galaxy J3 Mission.

Written By: Joseph Toth



INTRODUCTION

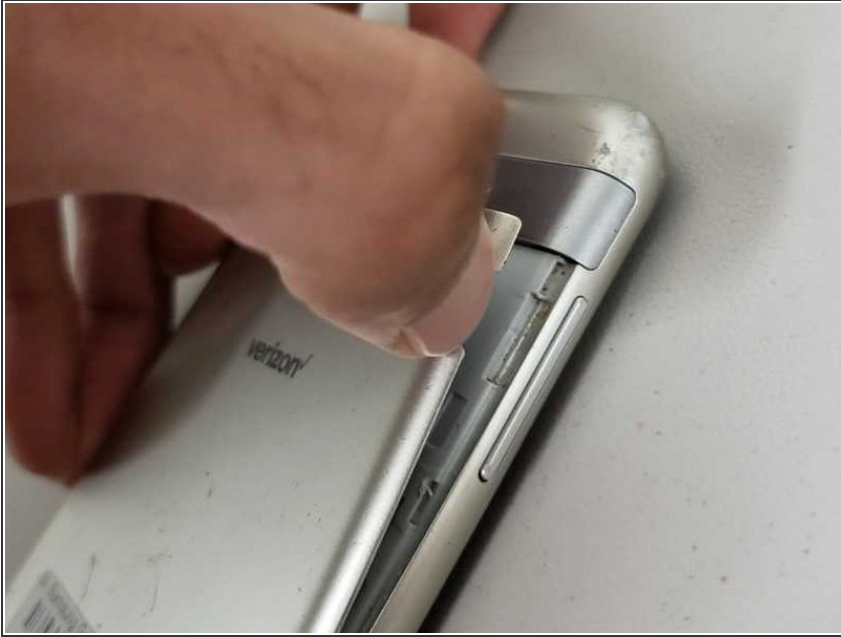
It is important to remove the SD and SIM card before getting deeper into the device, as these are easily damaged components. Additionally, replacement of these components is necessary when switching network providers, or if wanting to upgrade the available storage space for the device.



TOOLS:

- [iFixit Opening Tool](#) (1)
 - [Spudger](#) (1)
-

Step 1 — Back Cover



- Insert your fingernail into the back cover removal slot and gently pull back until the cover pops off.

Step 2 — Battery



- ⚠ Make sure that your device is powered off before removing the battery.
- Insert your fingernail into the battery removal slot and pull back until the battery pops out.

Step 3 — SD and SIM Cards



- Use your finger to slide the SD and SIM card out of the device.

To reassemble your device, follow these instructions in reverse order.