



Disassembling Sanyo Katana Eclipse X Outer Casing

Having internal hardware problems on your phone...

Written By: Scott Kelley



INTRODUCTION

Having internal hardware problems on your phone can be very complicated as you may not really know what to do. This guide will help you to access the inner workings of the phone by removing the outer shell. All it takes is the few simple steps that are listed below. After gaining access to the internal hardware, you should be able to replace items such as:

- * Screen
- * Keypad
- * LogicBoard
- * And More

TOOLS:

[Damaged Screw Remover](#) (1)

Step 1 — Back Panel



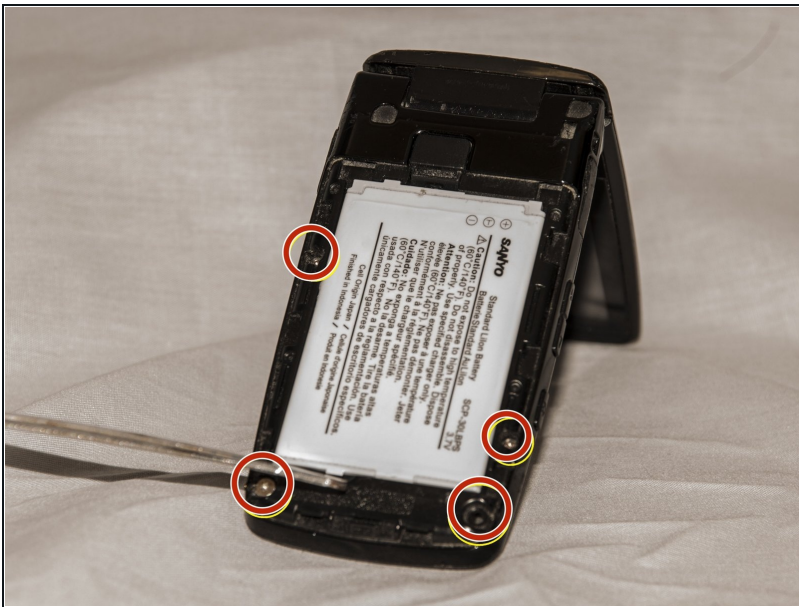
- Press the battery release button located on the back of the phone.
- With the button depressed, pull down on the battery protector to remove it from the phone.
 - ⓘ The phone's battery will now be exposed.

Step 2



- Slide a thin object under the white tab located on the bottom of the battery and carefully lift away from the phone.
 - ① A small, flat-tip screwdriver or credit card may be helpful for this step.
- The battery should now be free of the phone.

Step 3 — Casing



- ① This task can be difficult. This phone has several specialized screws that are engineered to prevent removal.
- With the battery removed, four (5.75mm) screws that hold the outer case together are visible (circled in picture).

Step 4



- Using your "Damaged Screw Remover", remove the screws from their current positions.
- Once the screws are removed, the phone can be split apart.
 - ① You may need to wiggle the case a bit in order to get it loose
- The case is now open.

To reassemble your device, follow these instructions in reverse order.