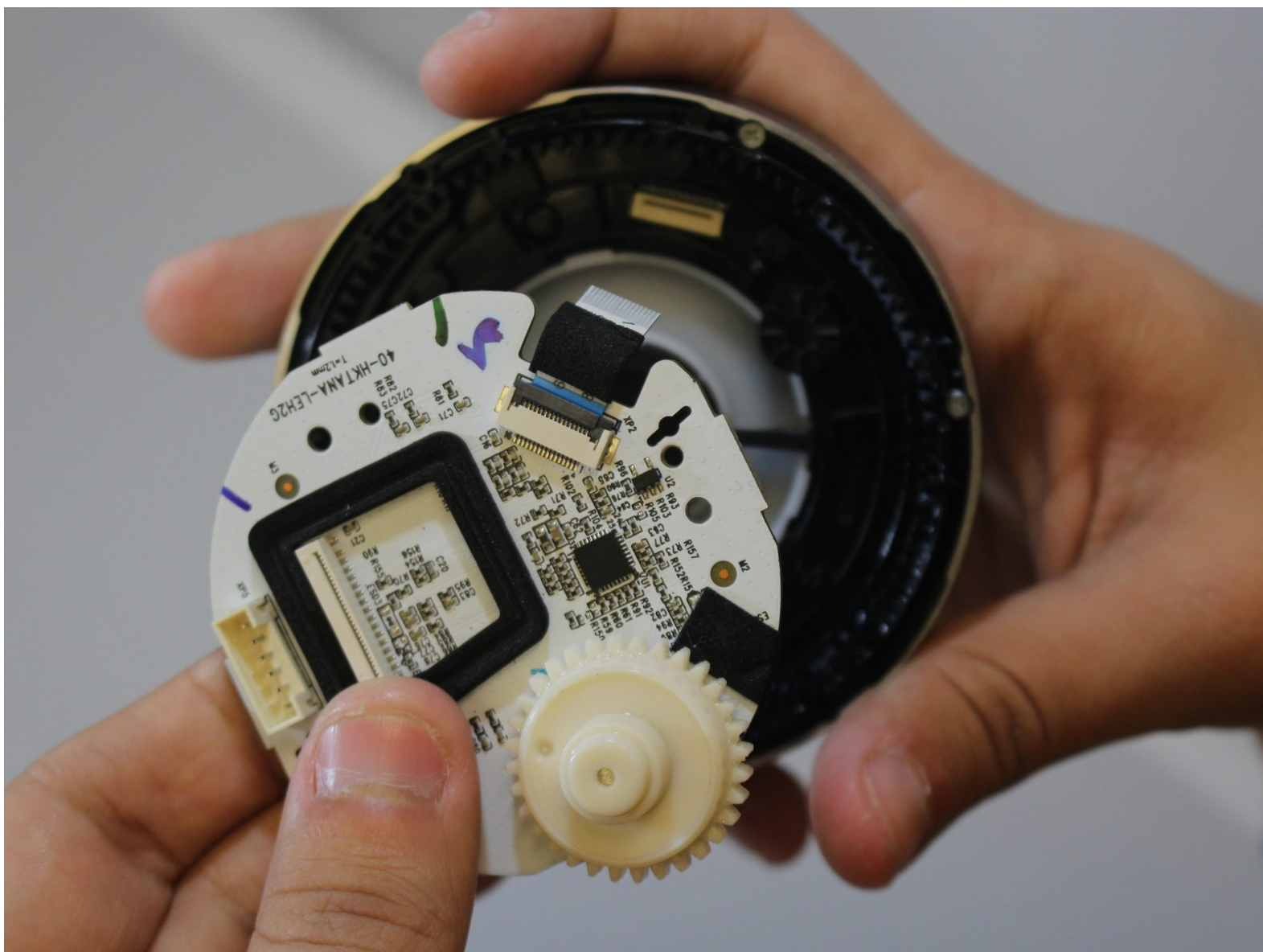




# Harman Kardon Invoke LED Board Replacement

If the LED does not function you might need to change one of the LED or LED Board, so for this replacement you need a Phillips #2 screw driver,

Written By: Khalid Almutairi



---

## INTRODUCTION

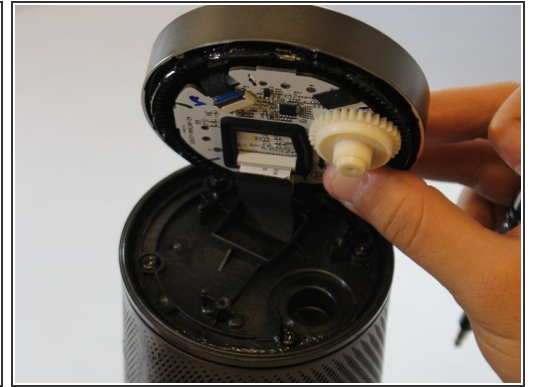
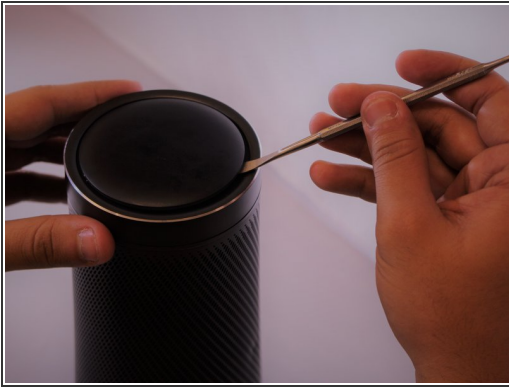
If the LED lights do not function after troubleshooting, you might need to change the LED Board. For this replacement you need a Phillips #2 screw driver and a metal spudger.



### TOOLS:

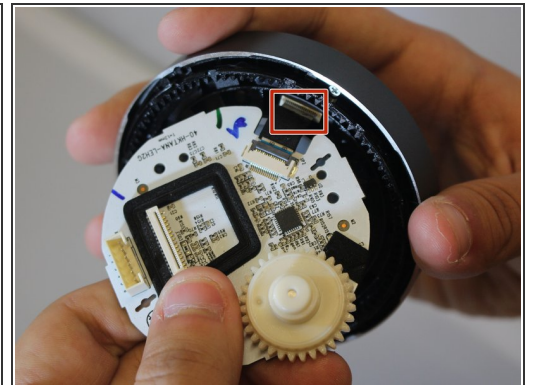
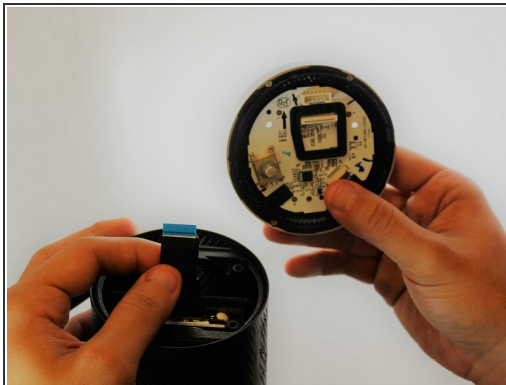
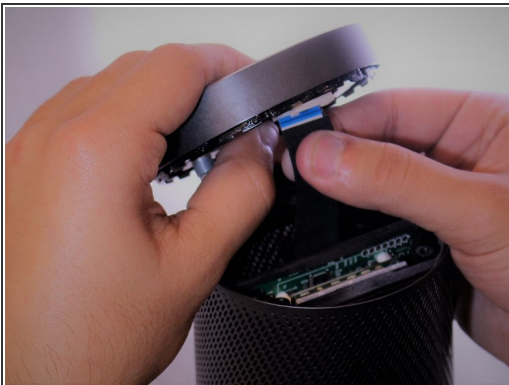
- [Metal Spudger](#) (1)
  - [Phillips #2 Screwdriver](#) (1)
-

## Step 1 — LED Board



- Use a metal spudger to remove the top cover.
- Use a Phillips #2 screwdriver to remove three 17 mm screws.

## Step 2



- Grip larger cable connected to LED board and pull volume wheel until both are disconnected from the cable.
- Pull lightly on the LED board to disconnect the smaller LED board cable from volume wheel.

To reassemble your device, follow these instructions in reverse order.