



Kenwood DNX571HD LCD Touch Screen Replacement

Replace an old or damaged touch screen for the Kenwood DNX571HD car stereo.

Written By: Wendy Zaballos



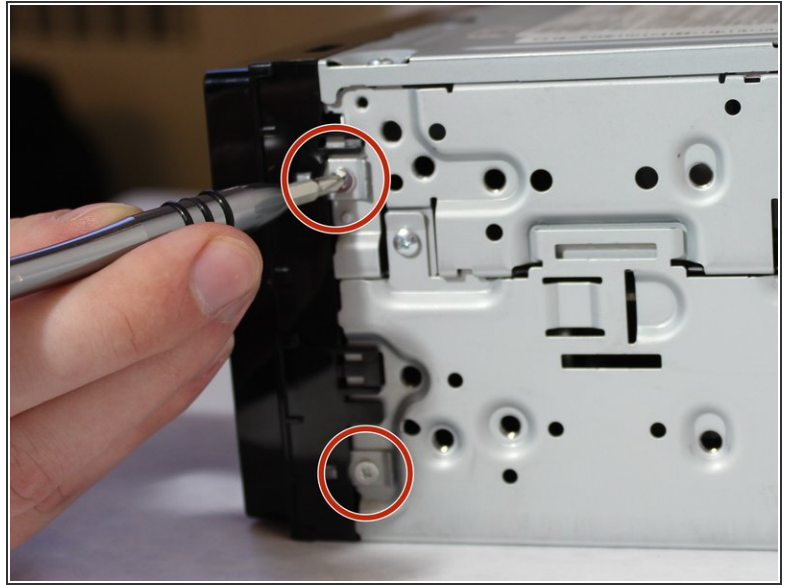
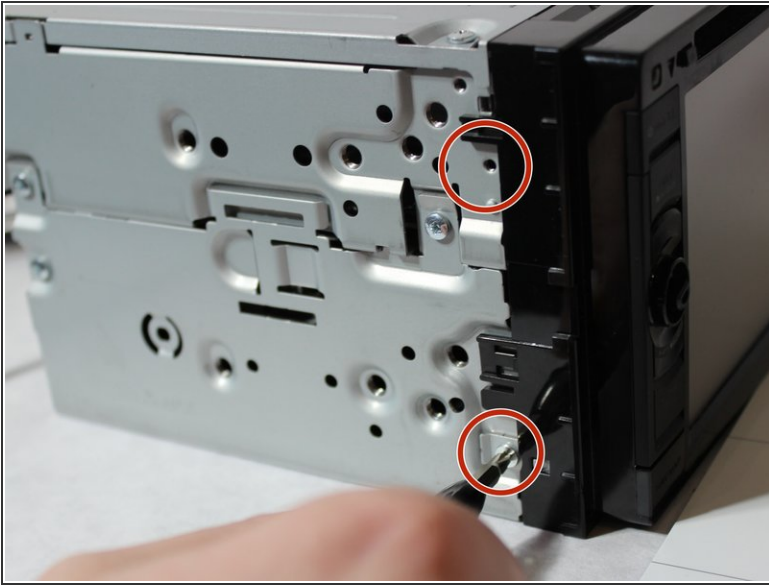
INTRODUCTION


If your screen has been damaged and needs to be replaced, this guide will provide the steps to remove the old screen and replace it with a new one.

TOOLS:


- [Spudger](#) (1)
 - [Phillips #1 Screwdriver](#) (1)
 - [ESD Safe Tweezers Blunt Nose](#) (1)
 - [JIS #00 Screwdriver](#) (1)
-

Step 1 — LCD Touch Screen

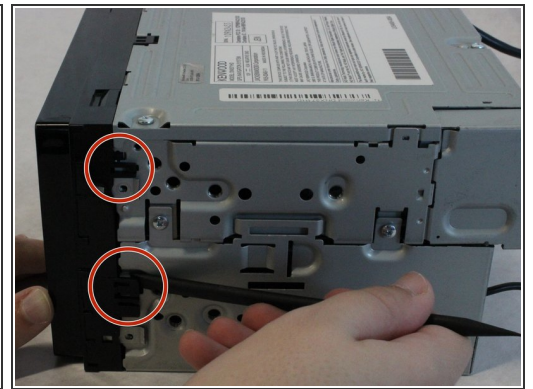
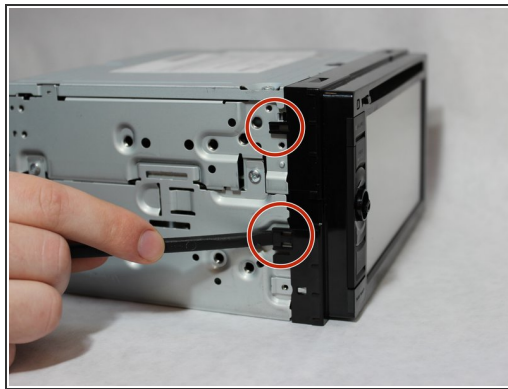


 Turn off the stereo and remove from the vehicle before starting.


- Unscrew the four 3.5mm side screws with a Phillips #1 screwdriver.

 There are two screws per side.

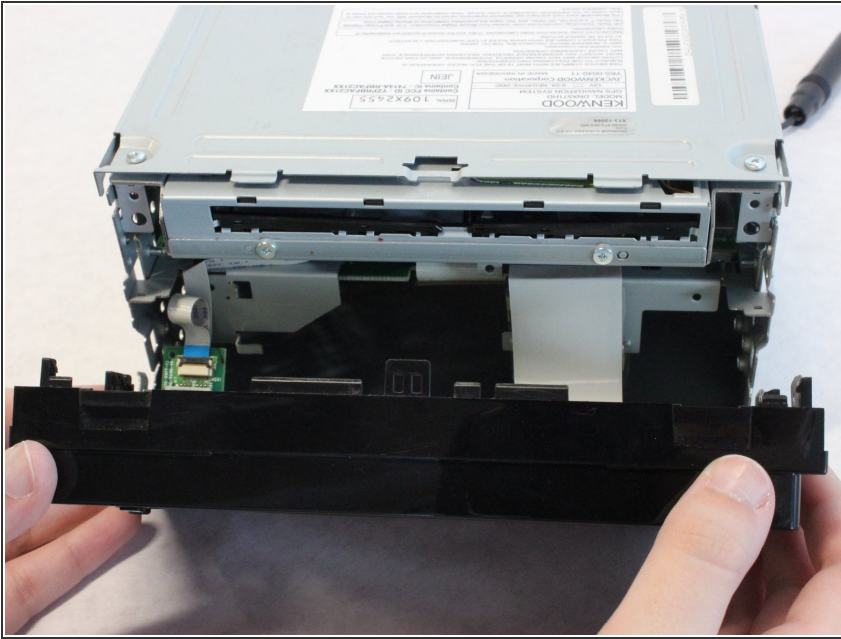
Step 2



- Use a spudger to unhook the plastic clips on the sides and top of the front panel. There are two clips on each side and one clip on the top.

 Place the spudger between the plastic tab and the metal case and gently lift the spudger away from the case.

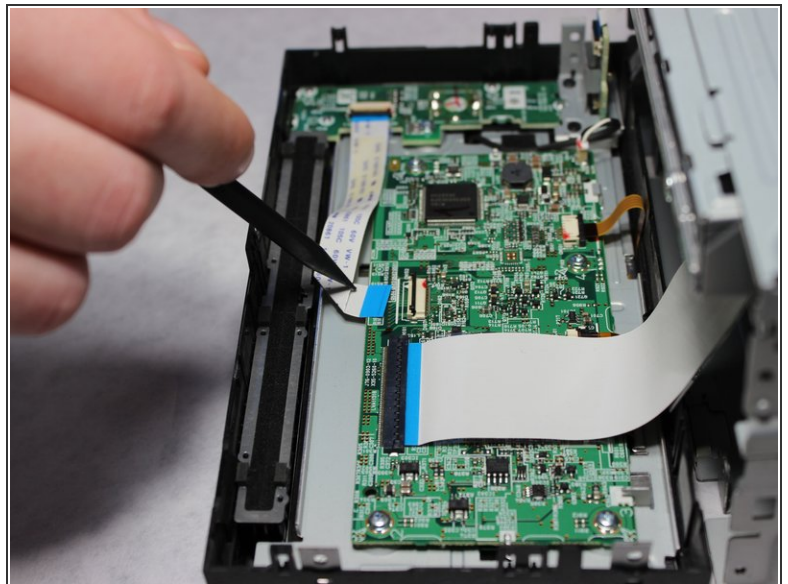
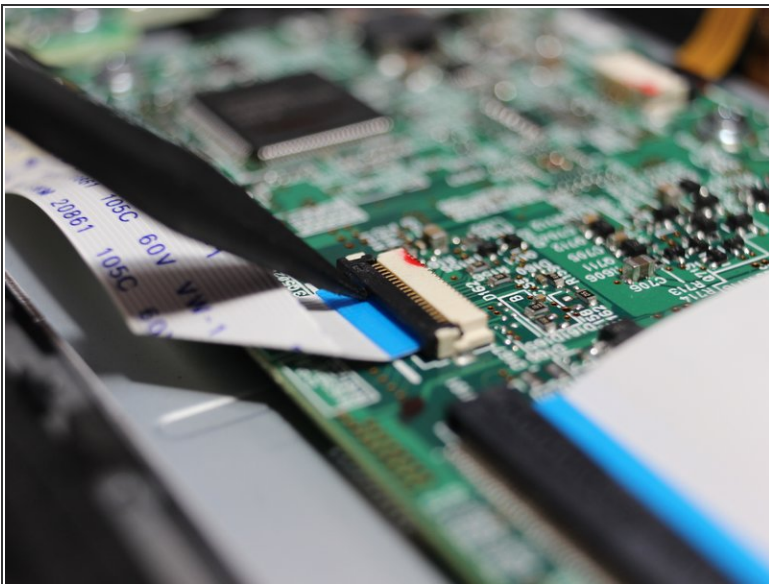
Step 3



- Pull the top of the front panel out and down to remove front panel.

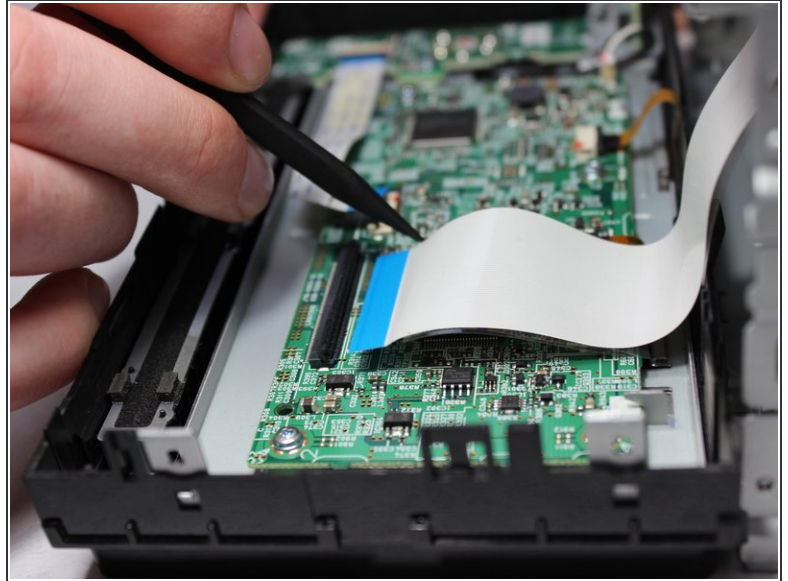
⚠ Remove the front panel gently so as not to damage the ribbon cables behind it.

Step 4



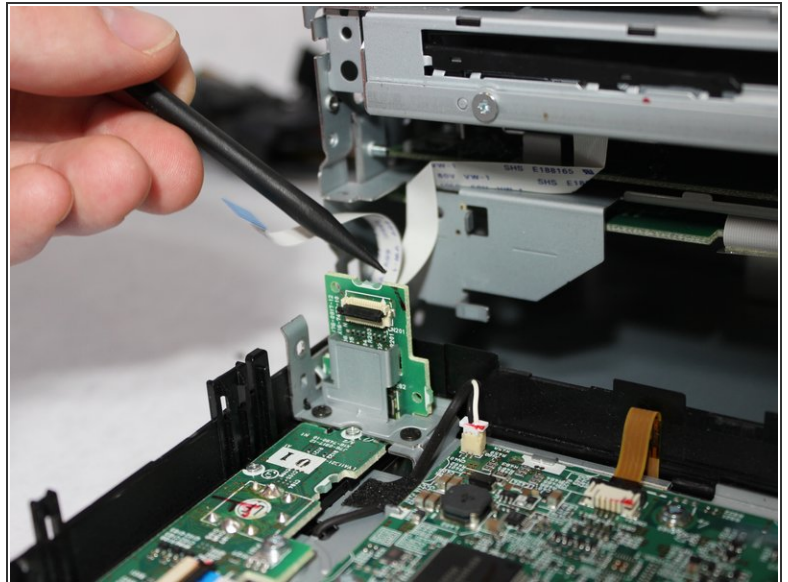
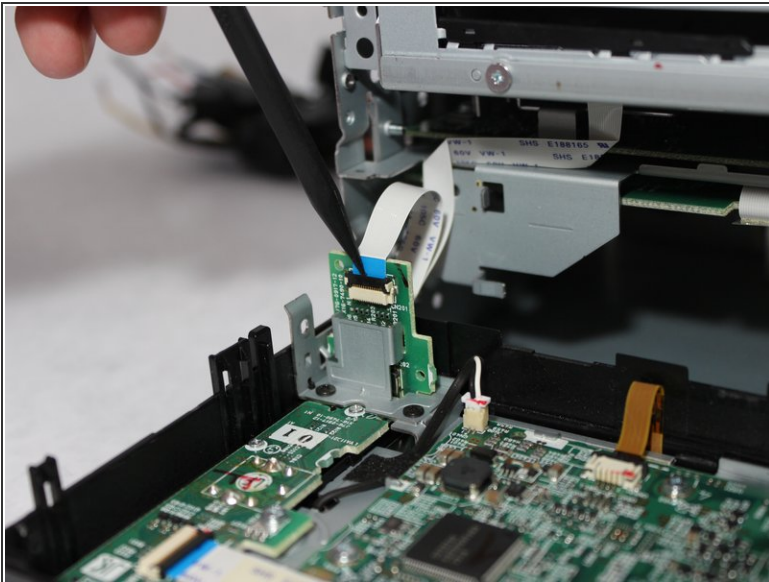
- Flip up the black clasp with the spudger to disconnect the small white ribbon cable from the main board.

Step 5



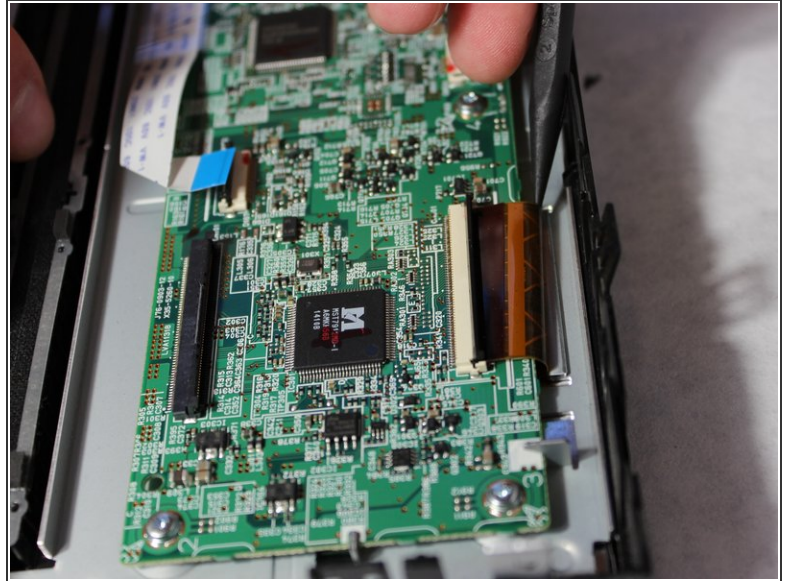
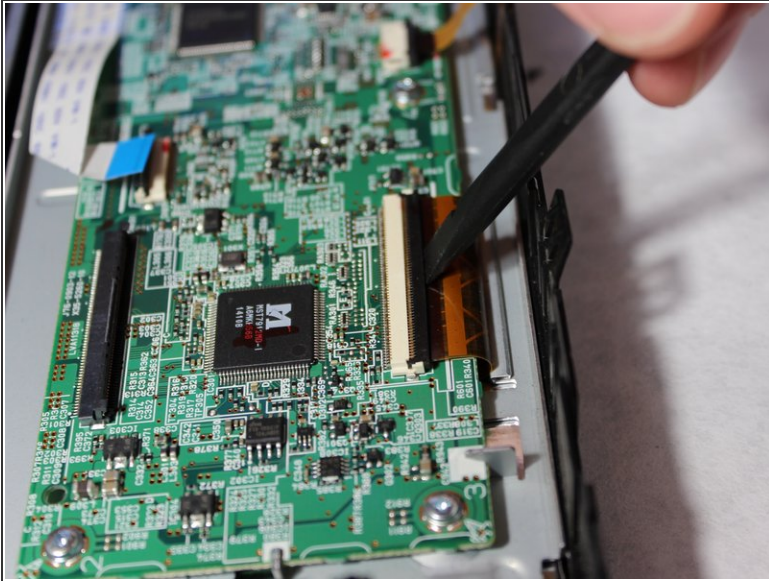
- Flip up the black clasp with the spudger to disconnect the large white ribbon cable from the main board.

Step 6



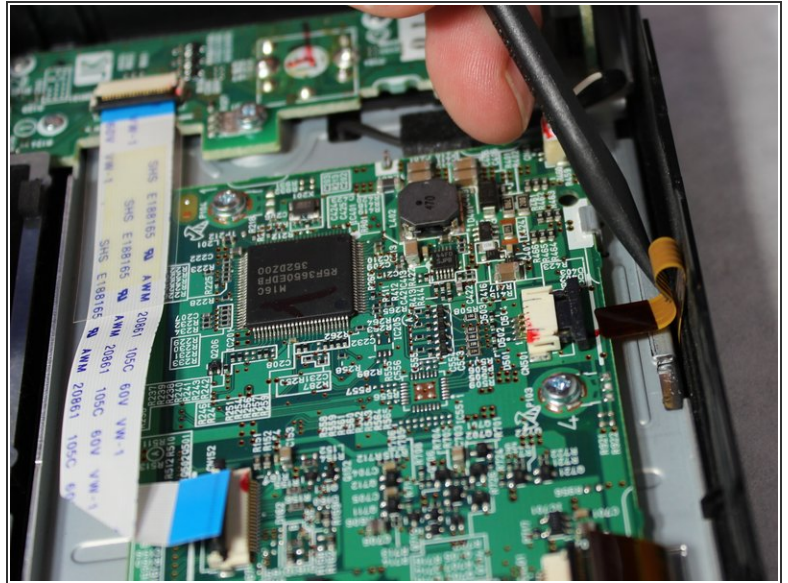
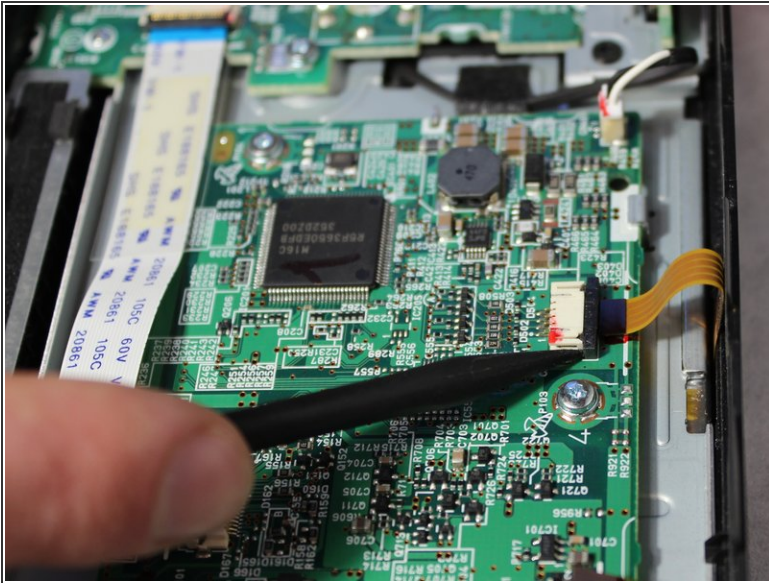
- Flip up the black clasp with the spudger to disconnect the small white ribbon cable from the vertical board.
- Carefully pull the ribbon from the clasp with the spudger.

Step 7



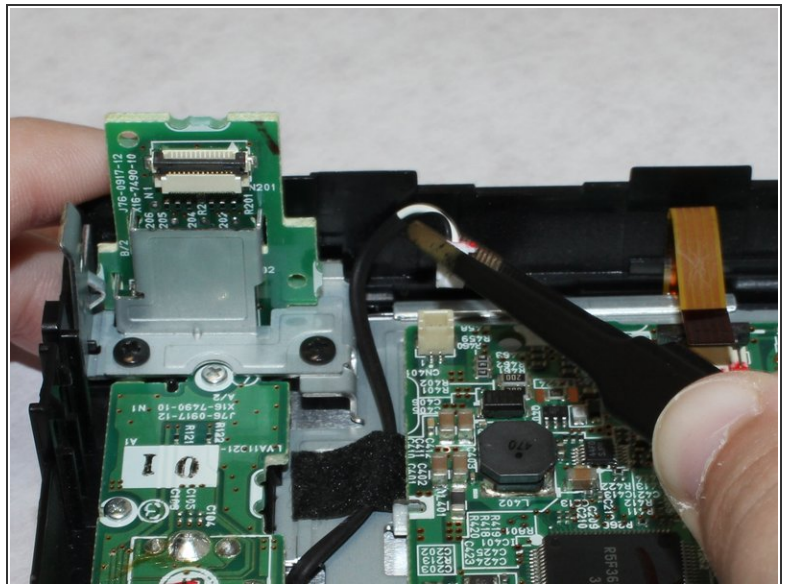
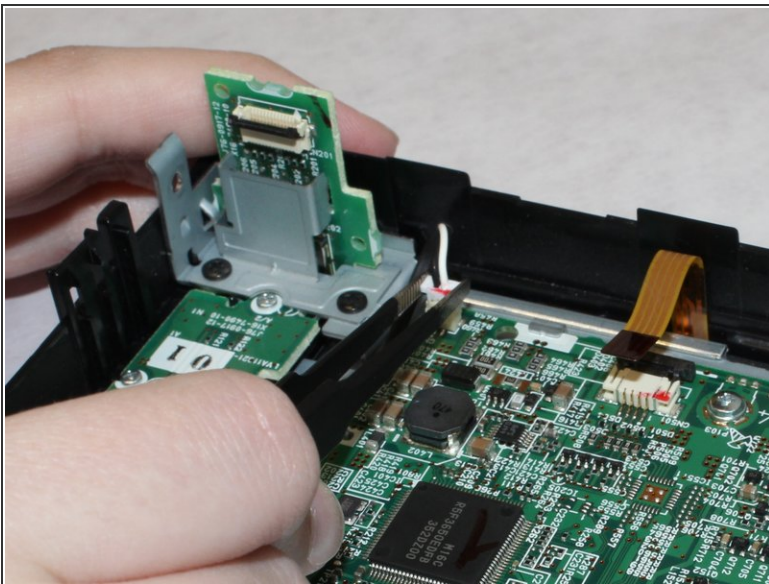
- Flip up the black clasp with the spudger to disconnect the large orange ribbon cable from the main board.
- Carefully pull the ribbon from the clasp with the spudger.

Step 8



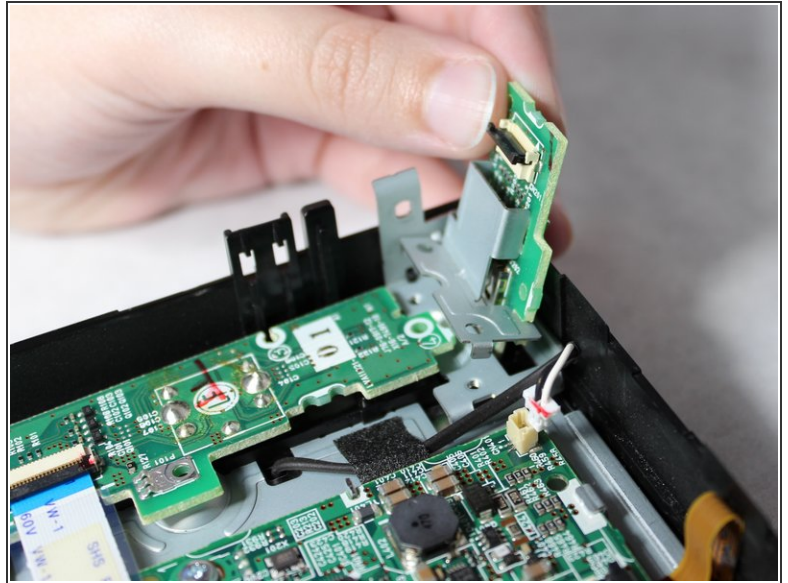
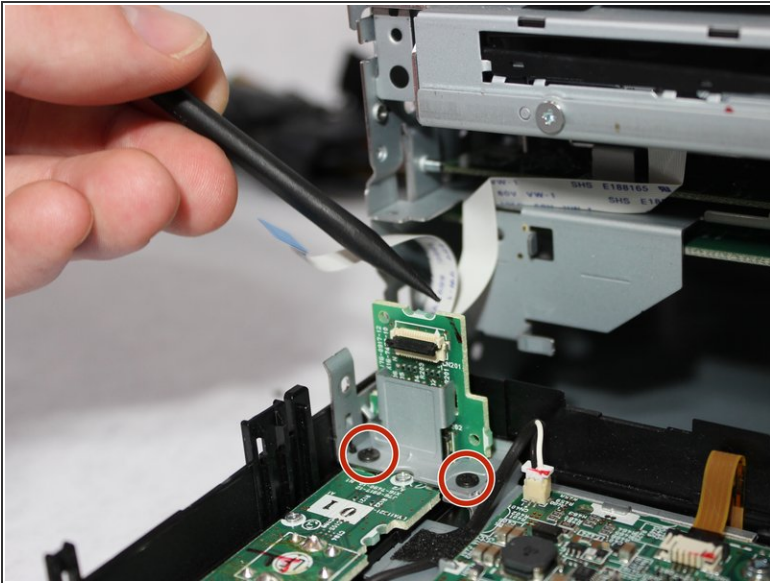
- Push out the black clasp with the spudger to disconnect the small orange ribbon cable from the main board.
- Gently push the ribbon out of the clasp with the spudger.

Step 9



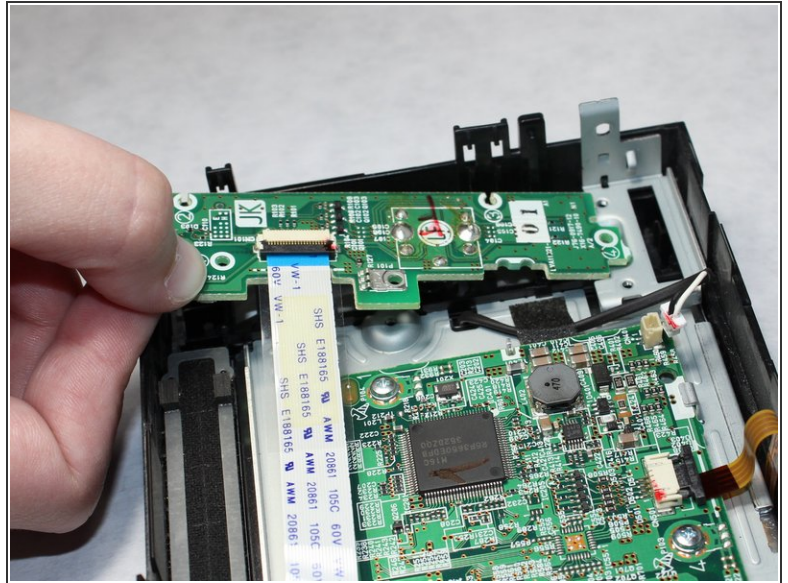
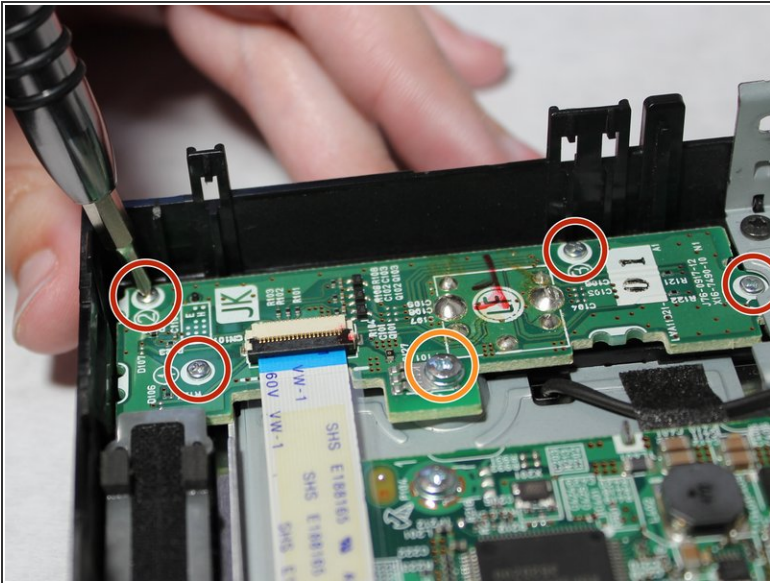
- Using a pair of tweezers, gently pull up on the connector for the power cable to disconnect it from the main board.

Step 10



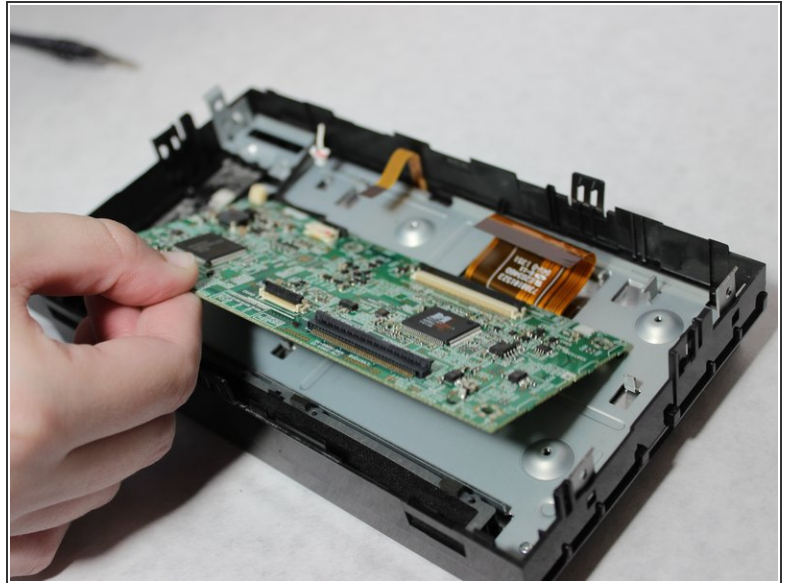
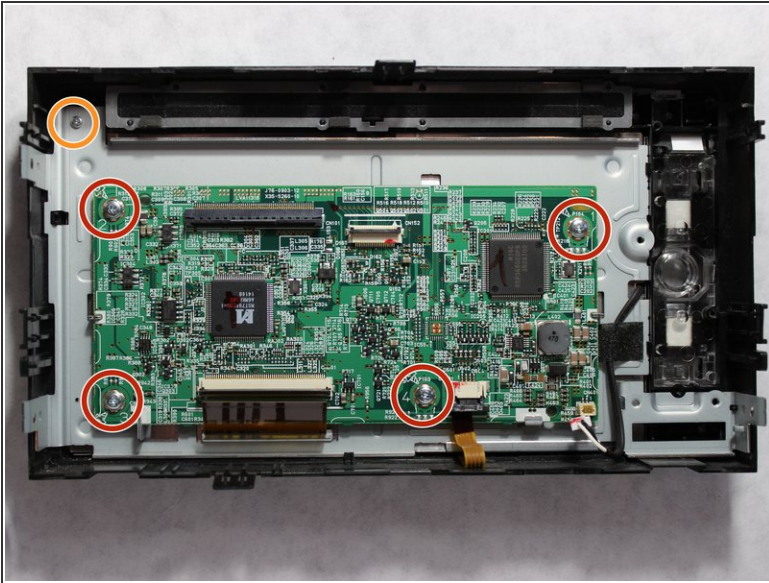
- Unscrew the two 4mm screws holding down the board that is standing vertically with a Phillips #1 screwdriver.
- Pull up on the board to remove it.

Step 11



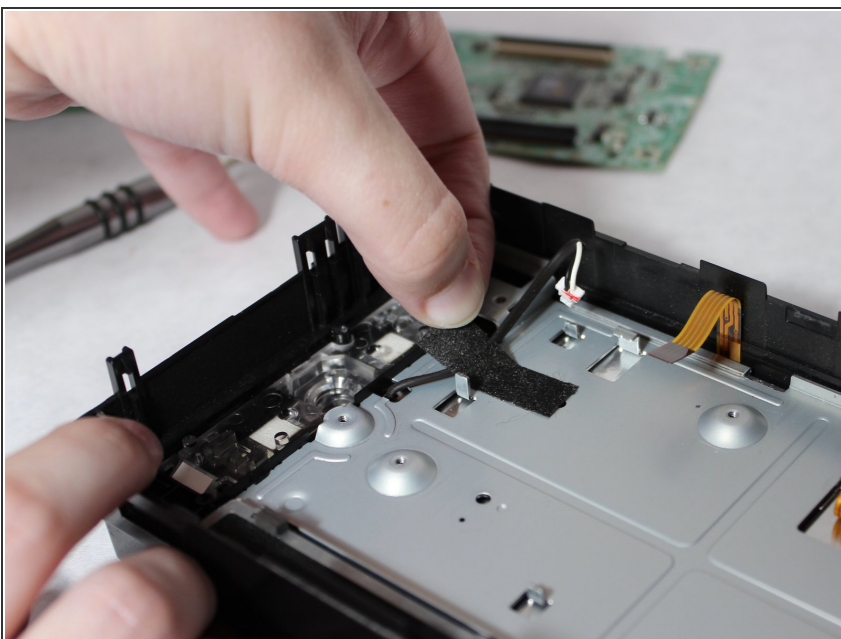
- Unscrew the four 5.5mm screws with a JIS #00 screwdriver.
- Unscrew the 4mm screw with a Phillips #1 screwdriver.
- Remove the disconnected circuit board.

Step 12



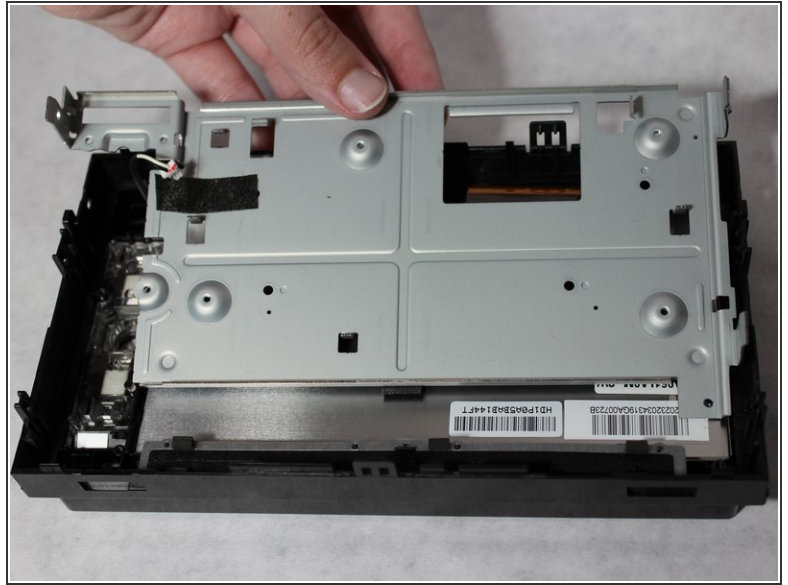
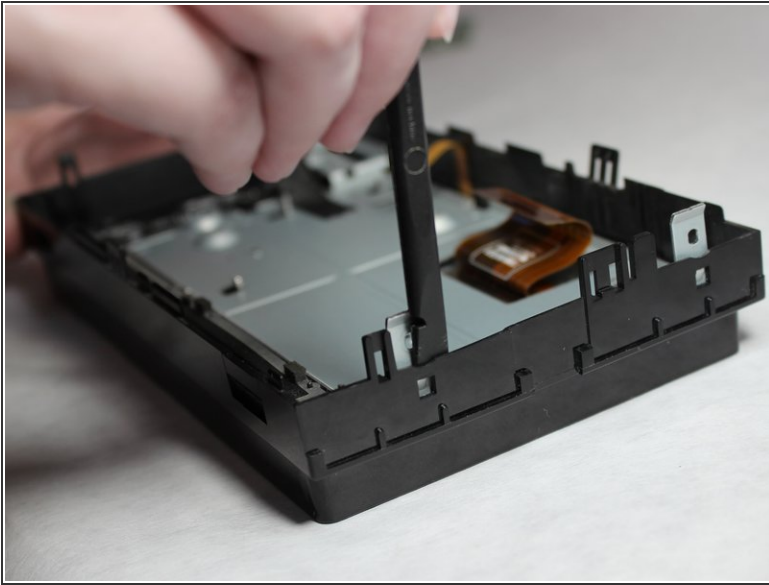
- Unscrew the four 4mm screws on the main board with a Phillips #1 screwdriver.
- Gently lift the board out of the casing.
- Unscrew the 5.5mm screw on the metal plate with a JIS #00 screwdriver.

Step 13



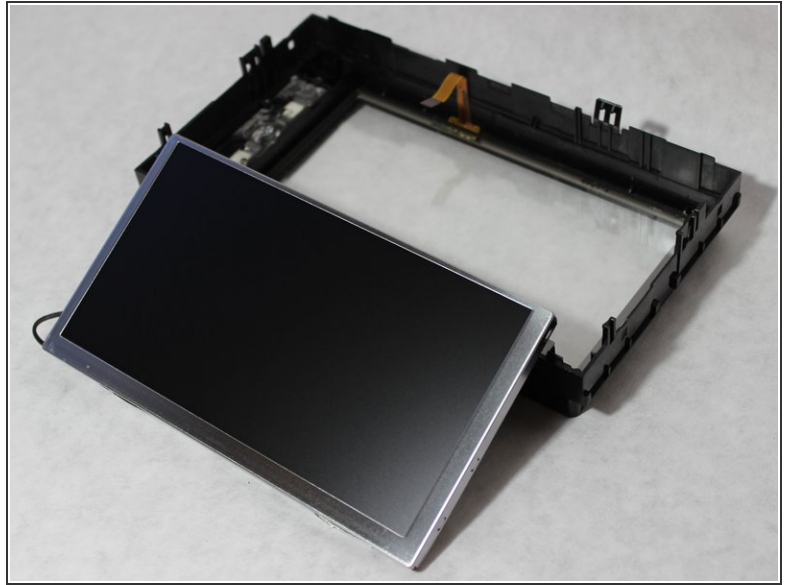
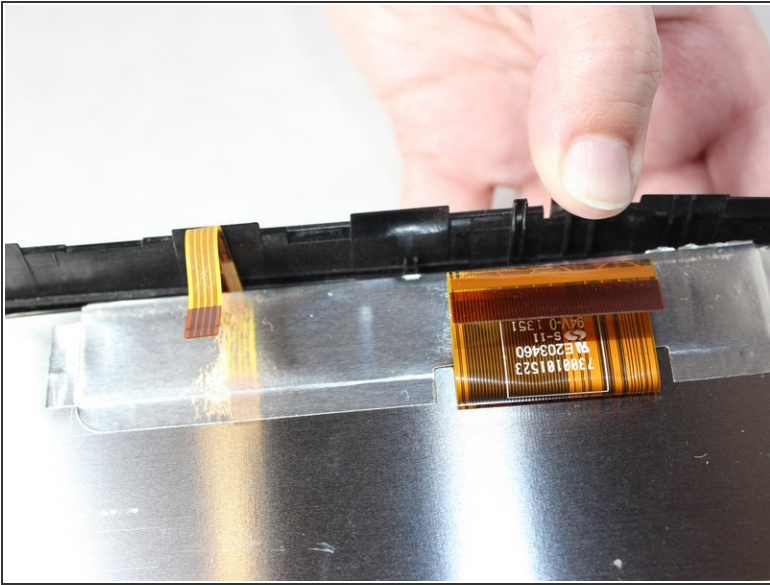
- Carefully remove the tape attaching the power cable to the metal plate.

Step 14



- Use the spudger to unhook the metal tabs and detach the metal plate from the plastic housing.
- ⓘ Place the spudger between the metal tab and the plastic case and gently lift the spudger away from the case.

Step 15



- Gently press the front of the screen to detach it from the plastic housing.
- ⓘ When removing the screen, gently flex out the plastic housing to help get the display past the plastic latch.

To reassemble your device, follow these instructions in reverse order.