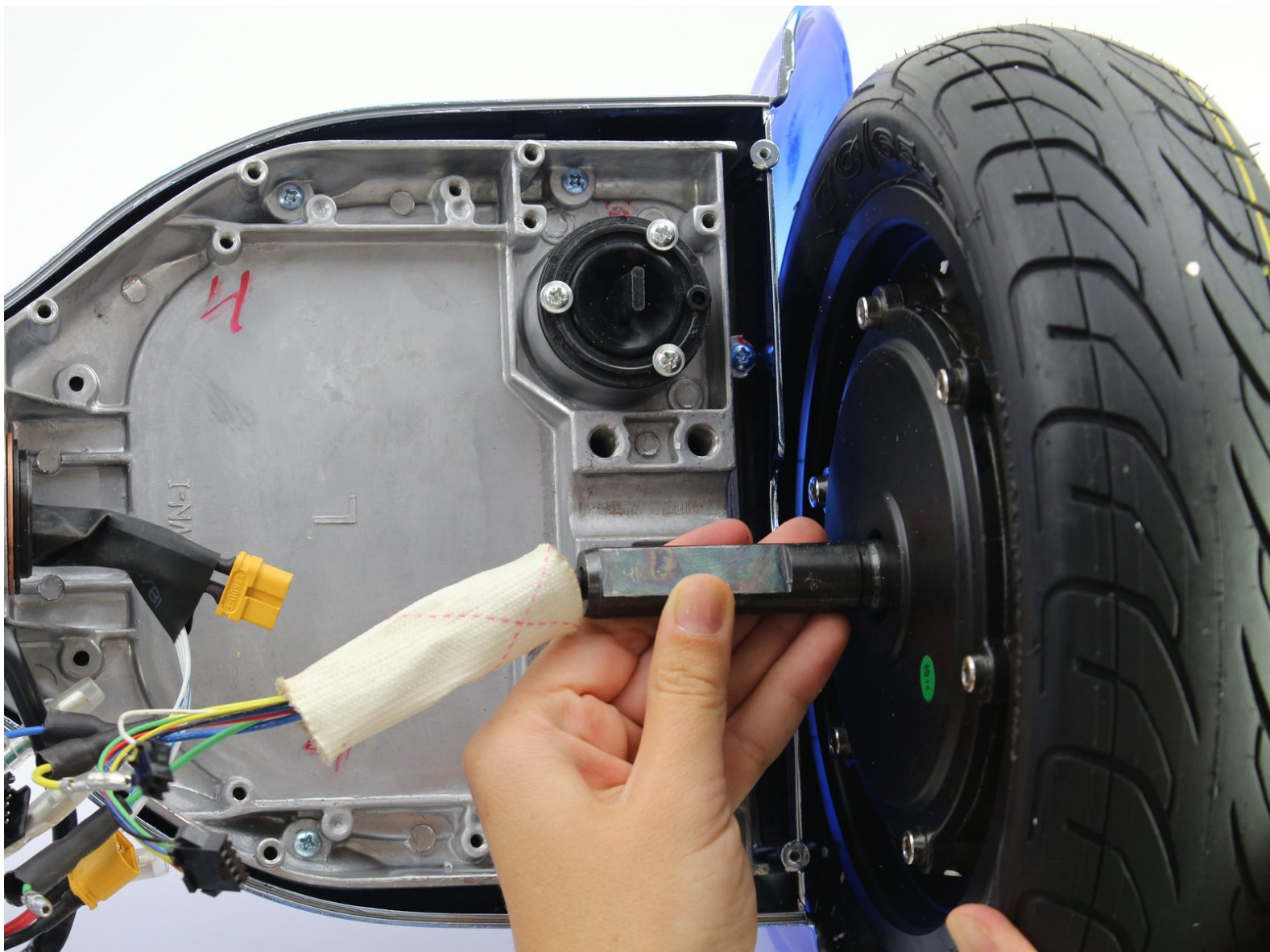




Hover-1 Titan Wheel and Motor Replacement

How to replace the wheel and motor on the Hover-1 Titan.

Written By: Emma Huun



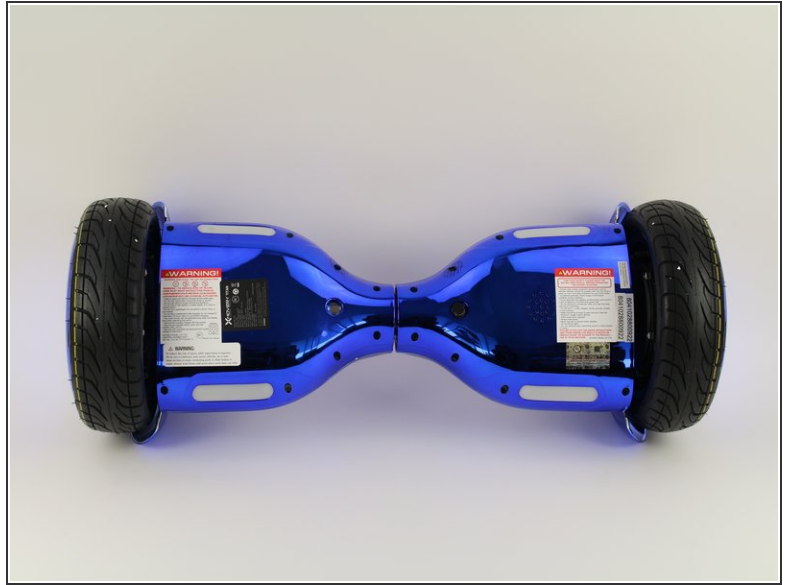
INTRODUCTION

If the wheel of your hoverboard is damaged or your hoverboard does not spin on one side, use this guide to replace the wheel and motor in the Hover-1 Titan.

TOOLS:

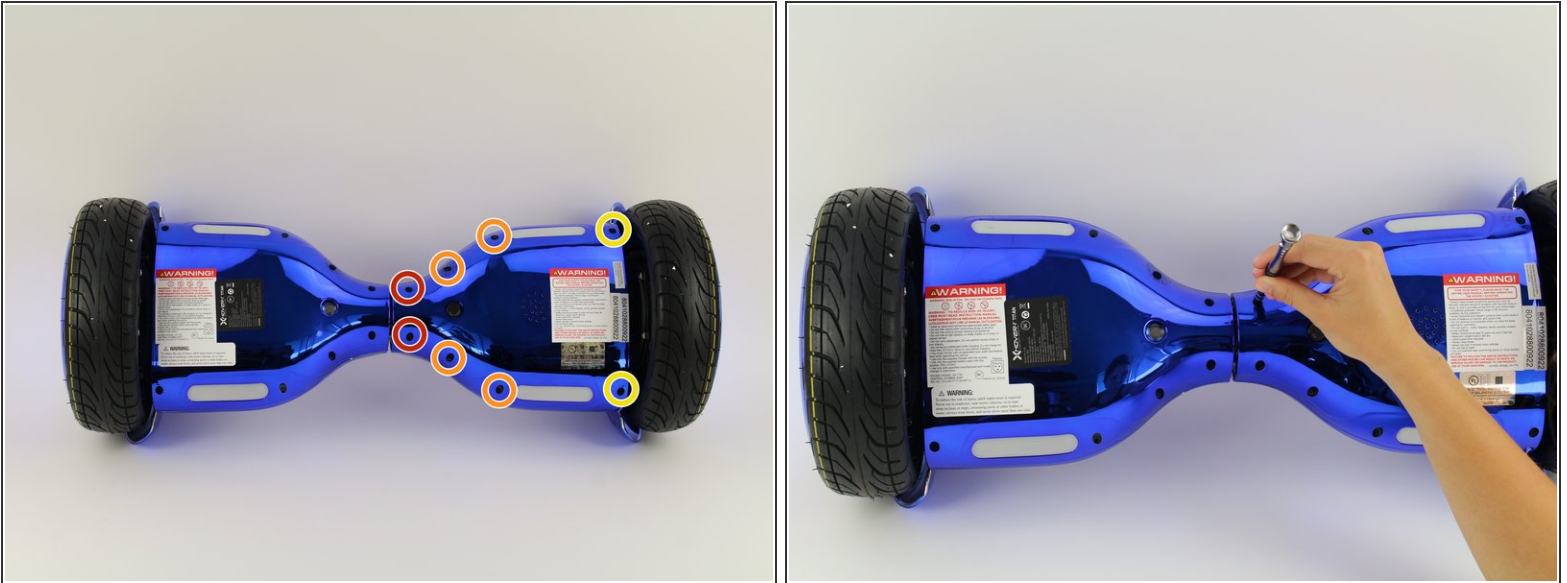
- [Impact Driver](#) (1)
 - [Utility Scissors](#) (1)
 - [Pocket knife](#) (1)
 - [Phillips #1 Screwdriver](#) (1)
-

Step 1 — Bottom Left Panel



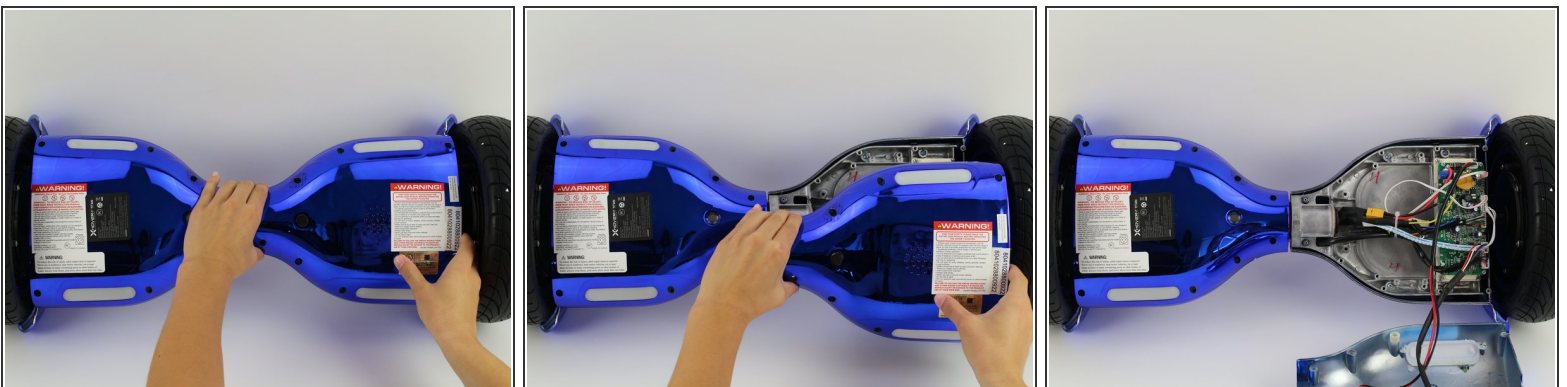
- Flip the hoverboard so the bottom is facing up.
- ⓘ The left side is the side that has the charge port. There is also an "L" on the metal plate underneath the wires.

Step 2



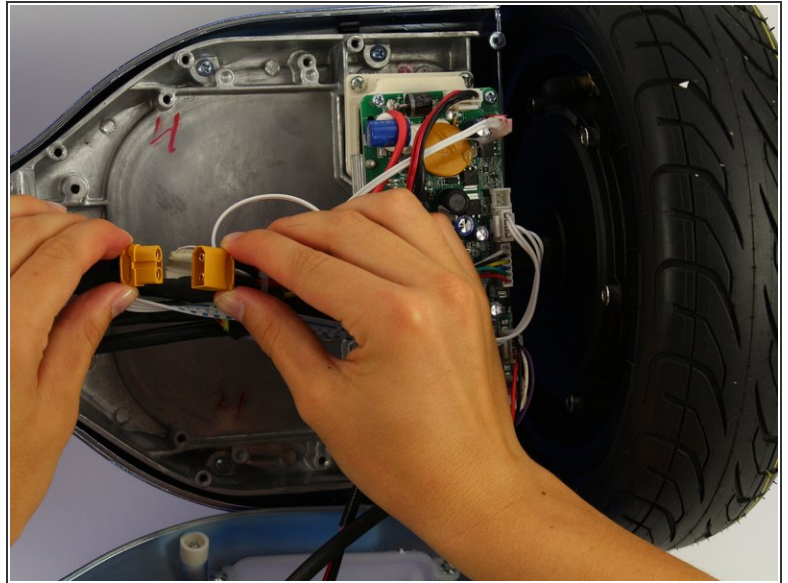
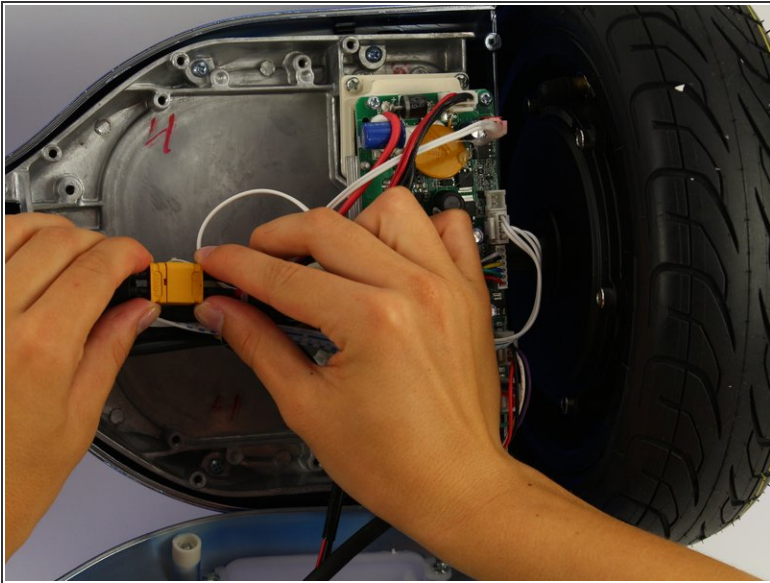
- Using a Phillips #1 screwdriver, remove the two 14 mm screws located closest to the center of the hoverboard.
- Using a Phillips #1 screwdriver, remove the four 12 mm screws located in the middle of the panel.
- Using a Phillips #1 screwdriver, remove two 15 mm screws located closest to the wheel.

Step 3



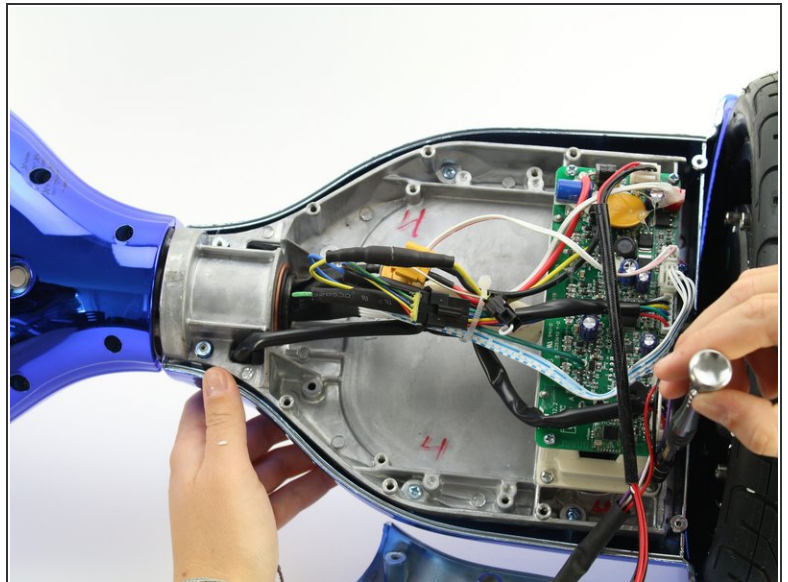
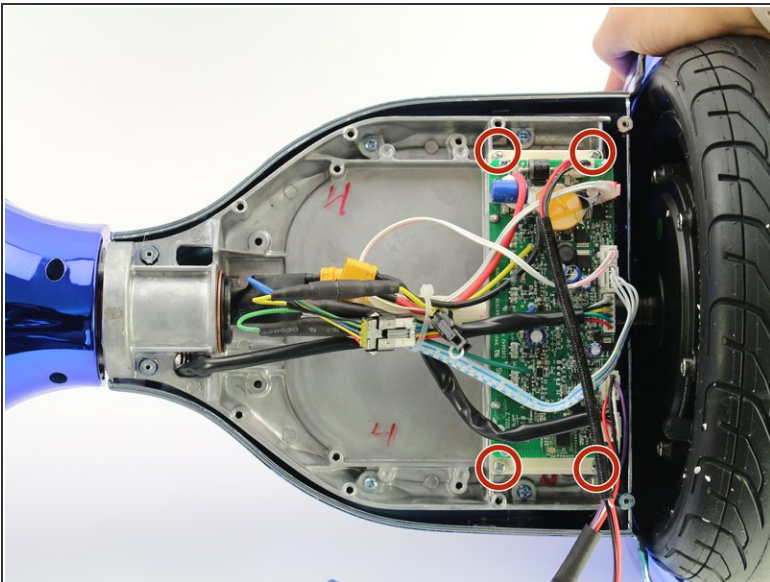
- Grip the bottom left panel and lift up to remove.

Step 4 — Wheel and Motor



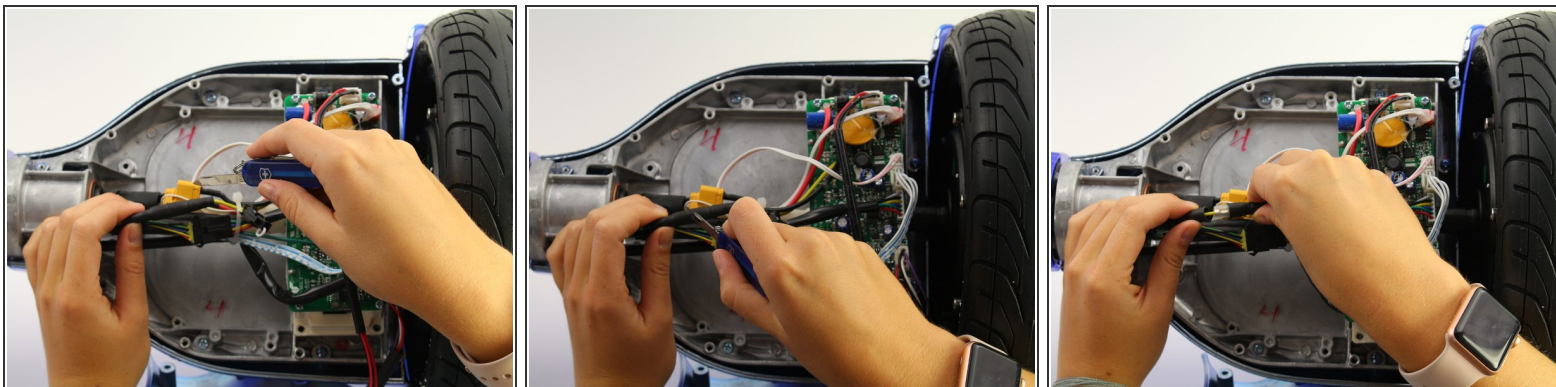
- Unplug the battery by pulling apart the yellow connectors.

Step 5



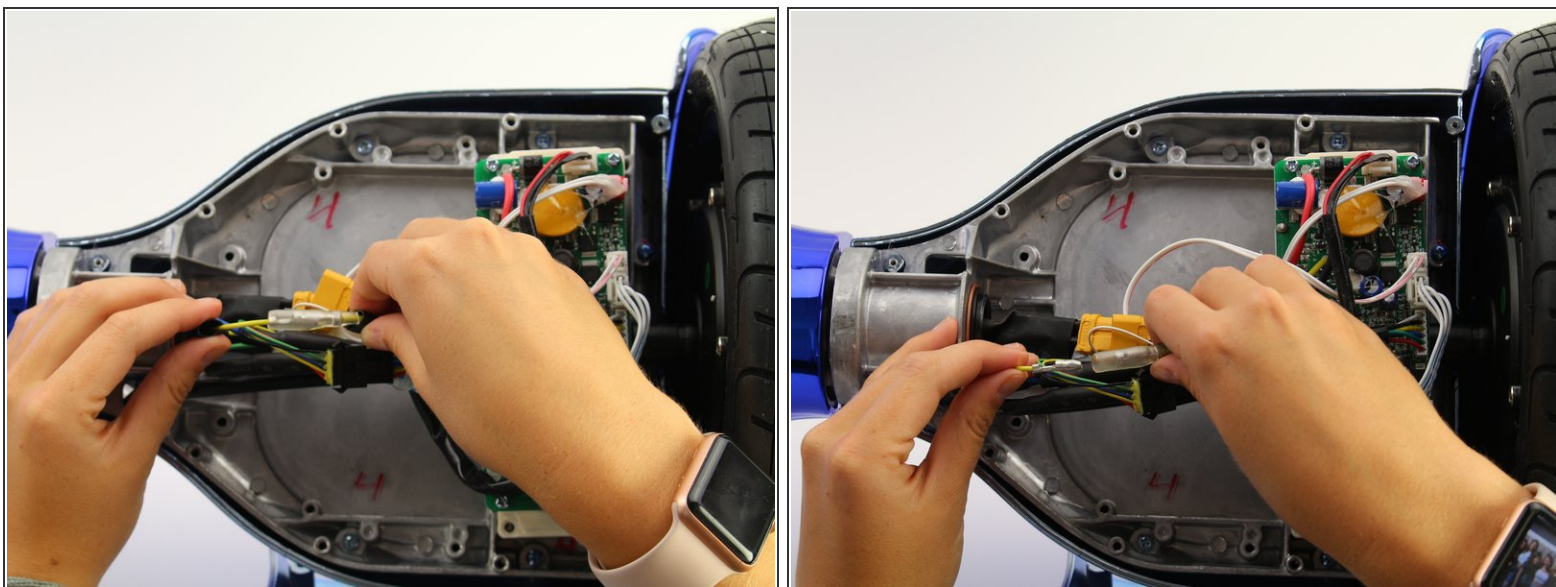
- Use the Phillips #1 screwdriver to remove the four 12mm screws that attach the gyroscope/motherboard to the hoverboard.

Step 6



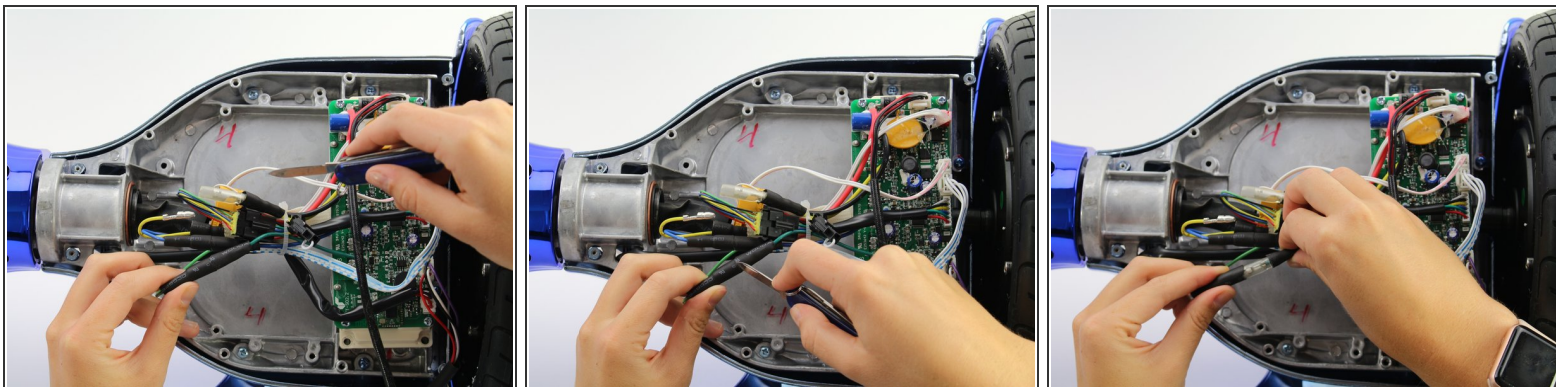
- Cut the rubber surrounding the yellow wire and pull the rubber apart, exposing the connectors.

Step 7



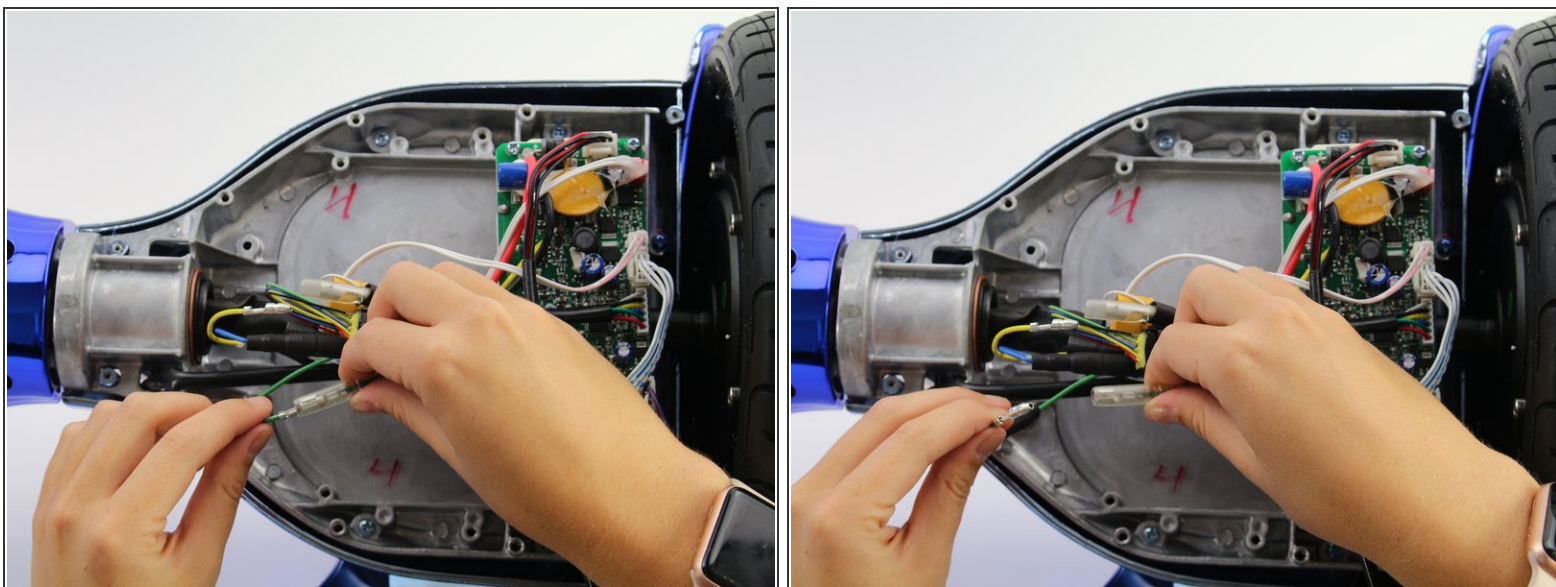
- Unplug the yellow wires by gripping the wire close to the connectors and pulling apart.

Step 8



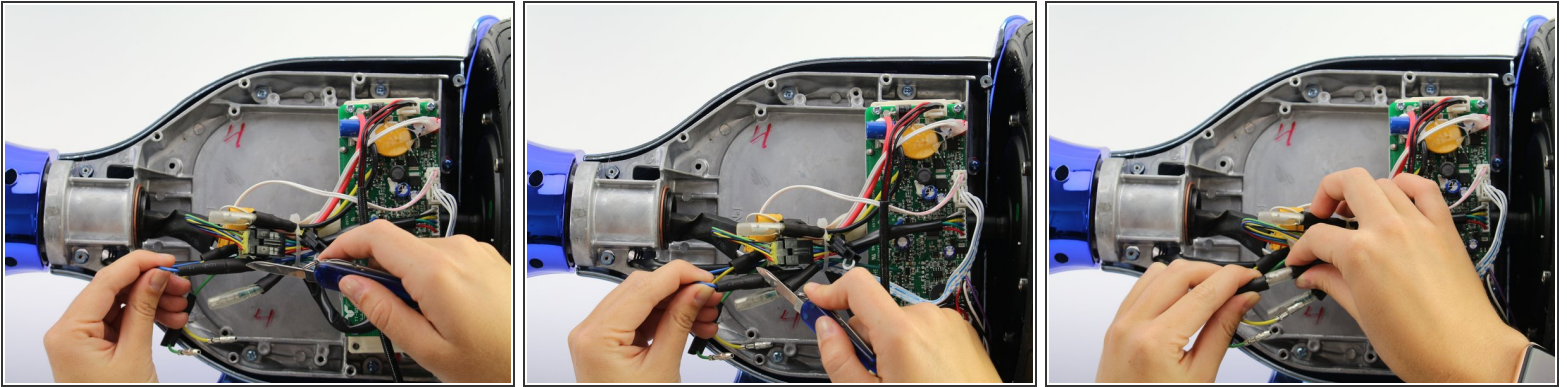
- Cut the rubber surrounding the green wire and pull the rubber apart, exposing the connectors.

Step 9



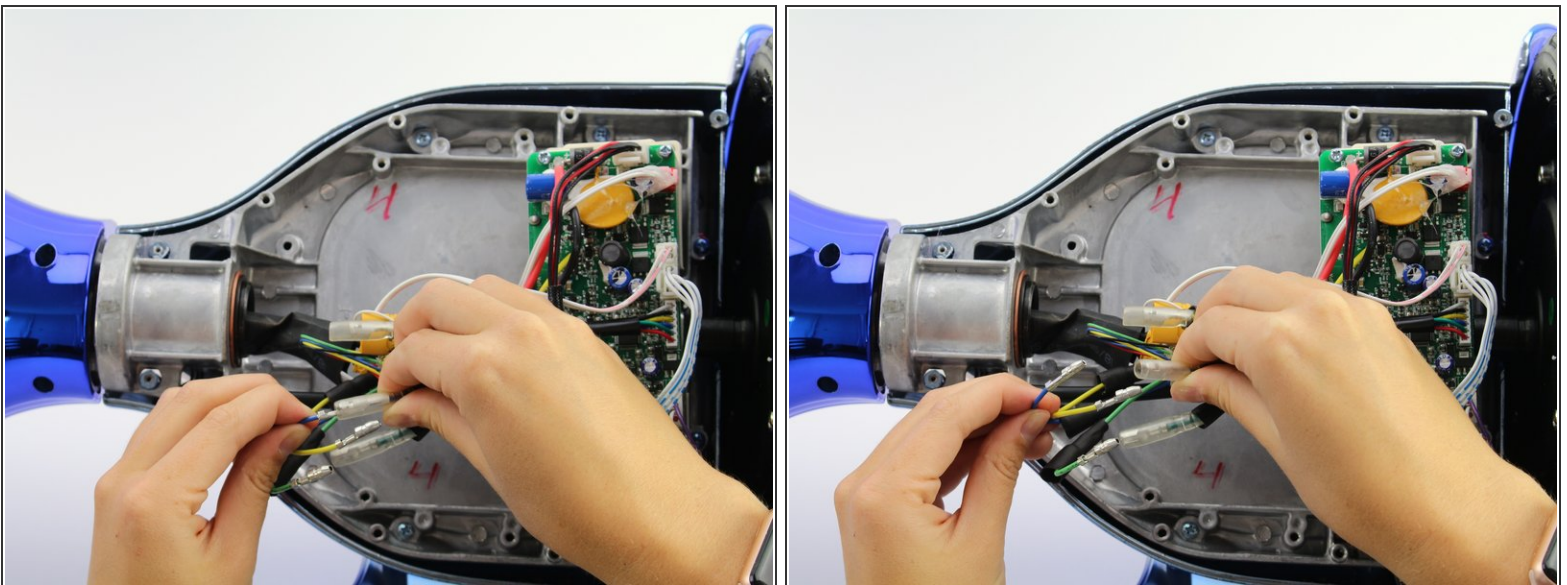
- Unplug the green wires by gripping the wire close to the connectors and pulling apart.

Step 10



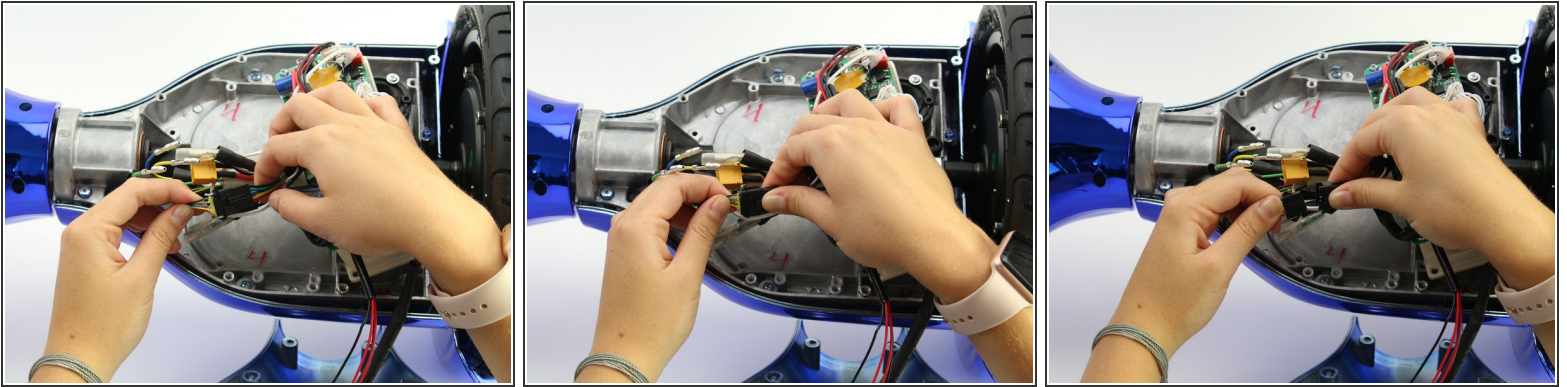
- Cut the rubber surrounding the blue wire and pull the rubber apart, exposing the connectors.

Step 11



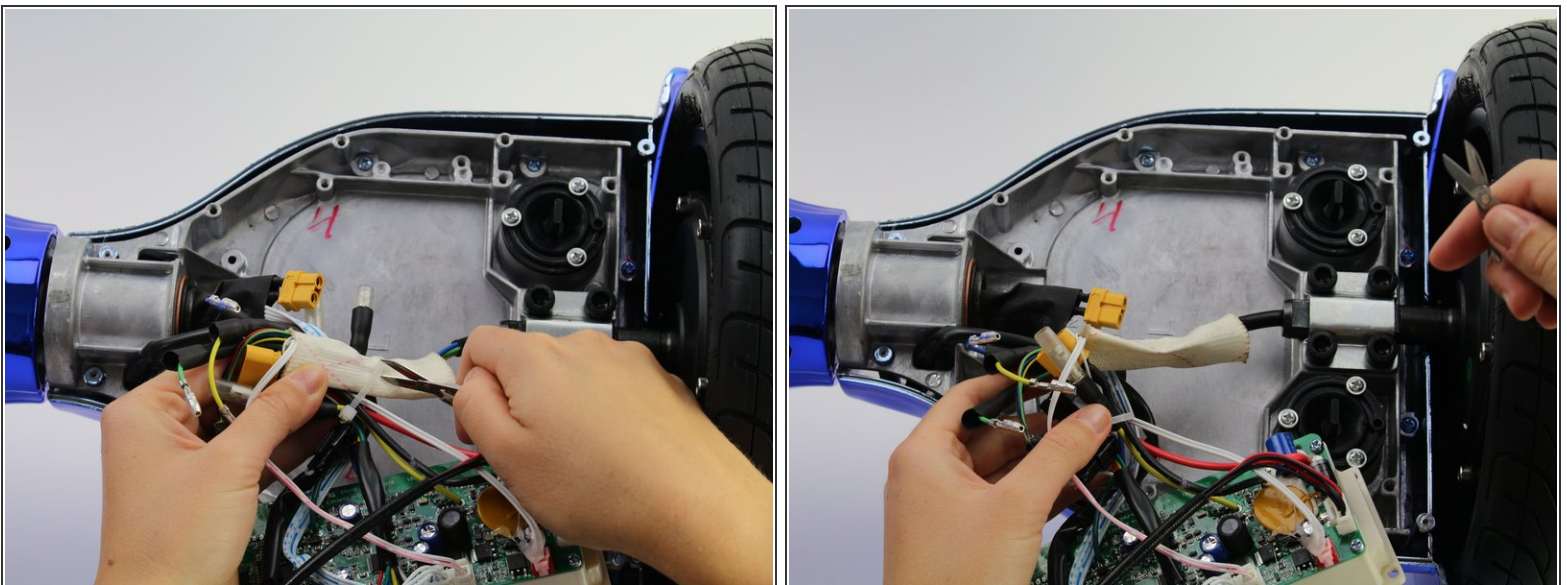
- Unplug the blue wires by gripping the wire close to the connectors and pulling apart.

Step 12



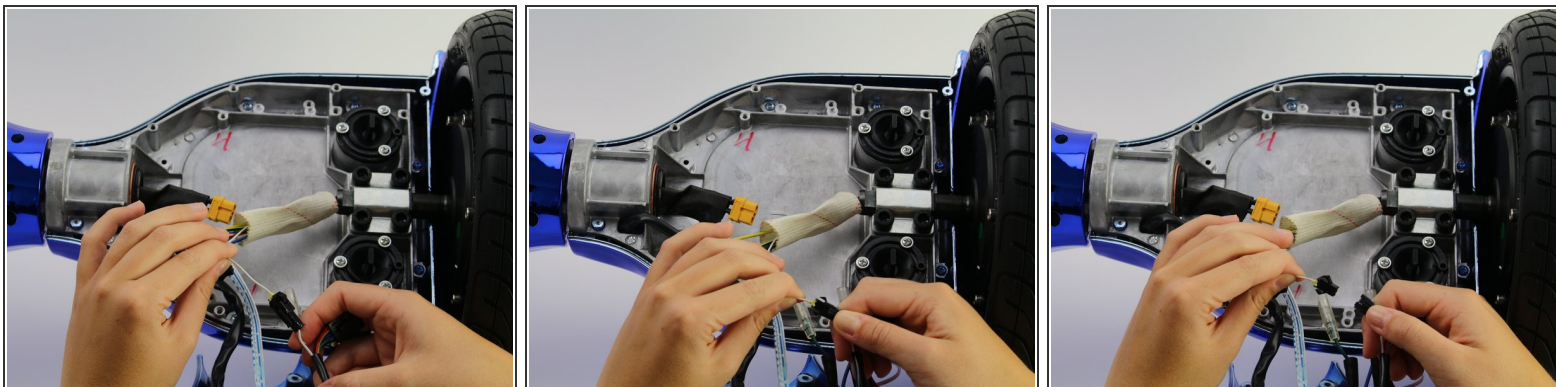
- Unplug the rainbow connector by squeezing the clips and pulling apart.

Step 13



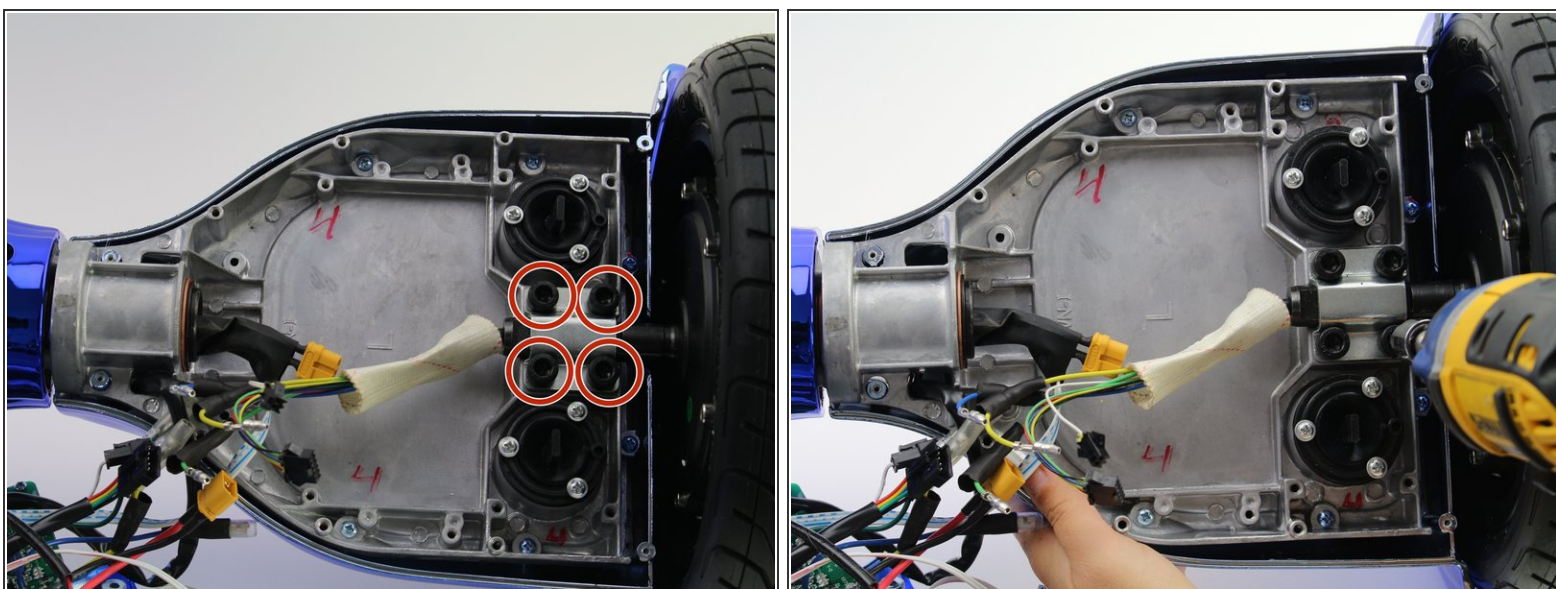
- Use scissors to cut the zip tie around the group of wires.

Step 14



- Unplug the white wire connector by squeezing the clips and pulling apart.

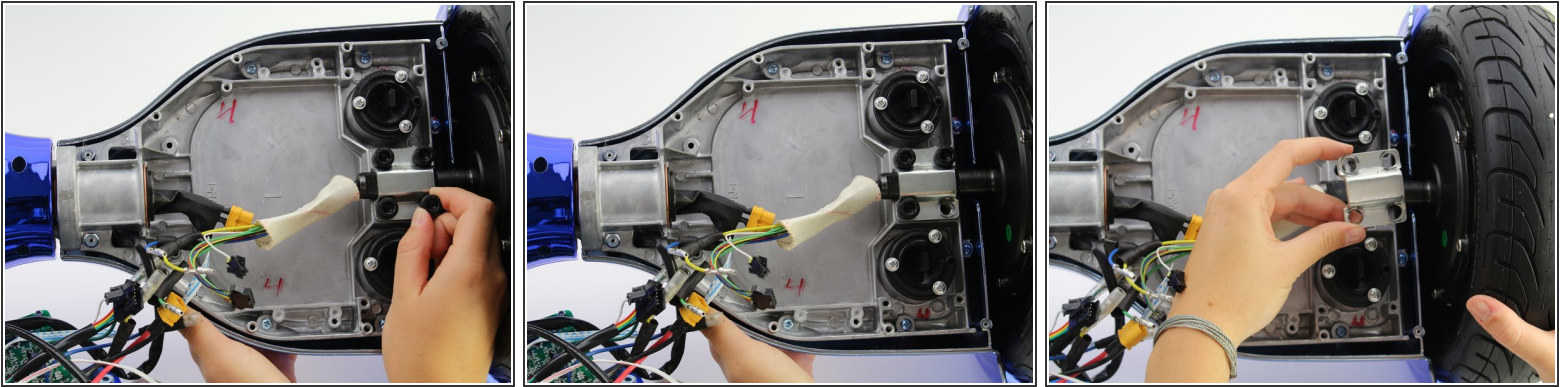
Step 15



- Use an impact driver with a hex 6 bit to loosen the four 20 mm hex 6 bolts.

⚠ Wear safety glasses while using the impact driver.

Step 16



- Pull out the loosened screws with your hands and remove the metal plate.

Step 17



- Lift the wheel and motor shaft up and out of the board.

i The motor shaft is located within the wheel.

To reassemble your device, follow these instructions in reverse order.