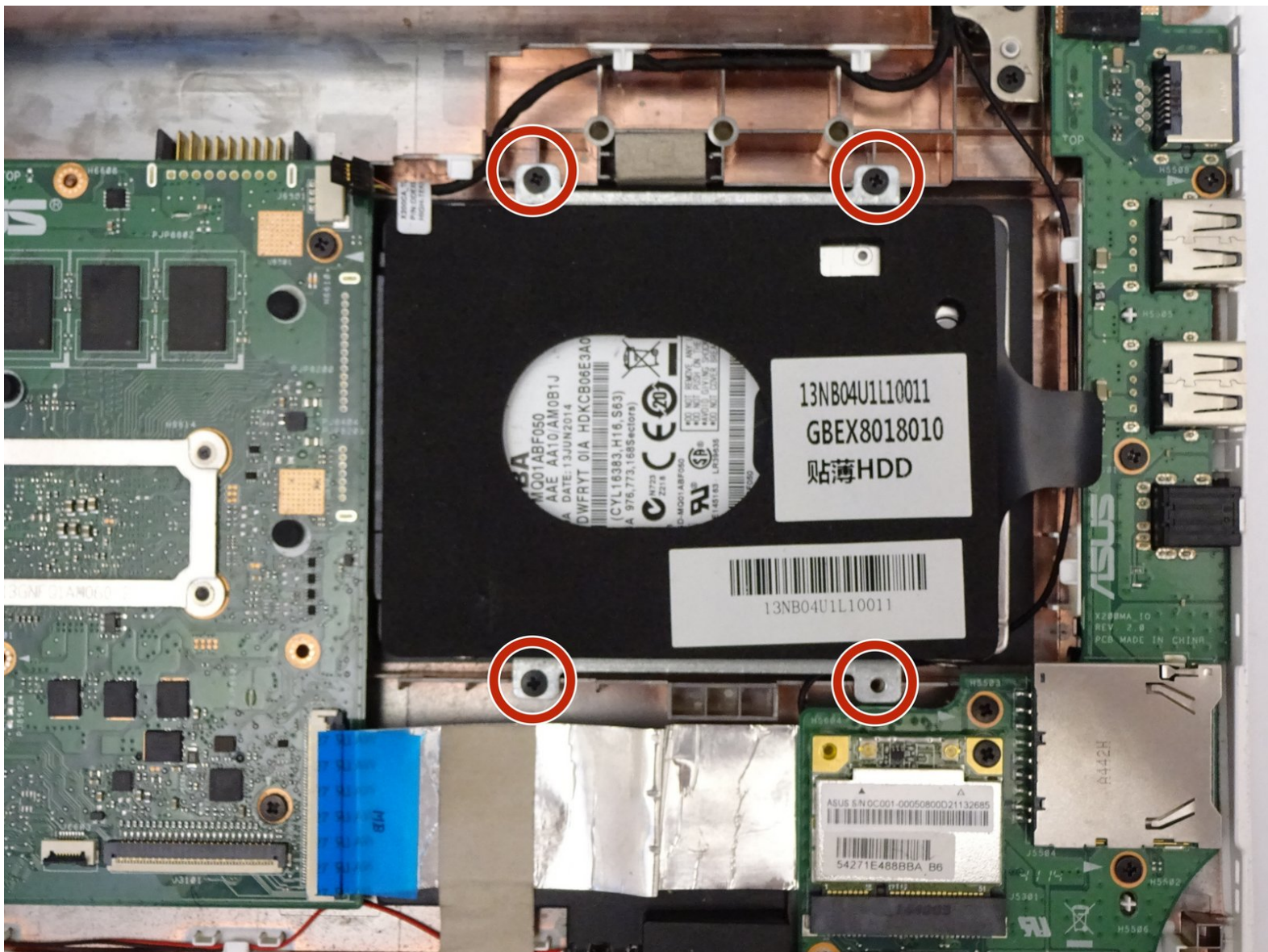




# ASUS K200MA-DS01T Hard Drive Replacement

Hard drive replacements for the Asus K200MA-DS01T can be done using this step-by-step guide.

Written By: Terrinda



---

# INTRODUCTION

This guide will help to assist in replacing the hard drive for an Asus K200MA laptop.

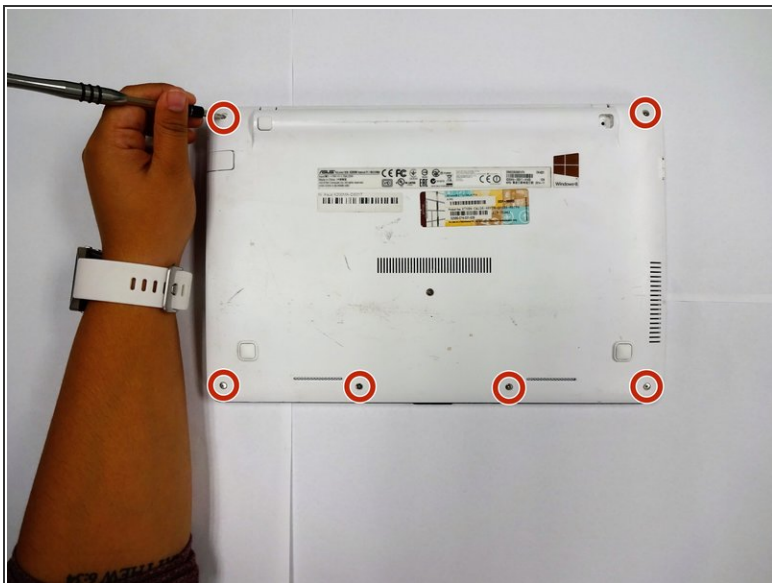
---



## TOOLS:

- [Phillips #0 Screwdriver](#) (1)
  - [iFixit Opening Tools](#) (1)
  - [Spudger](#) (1)
-

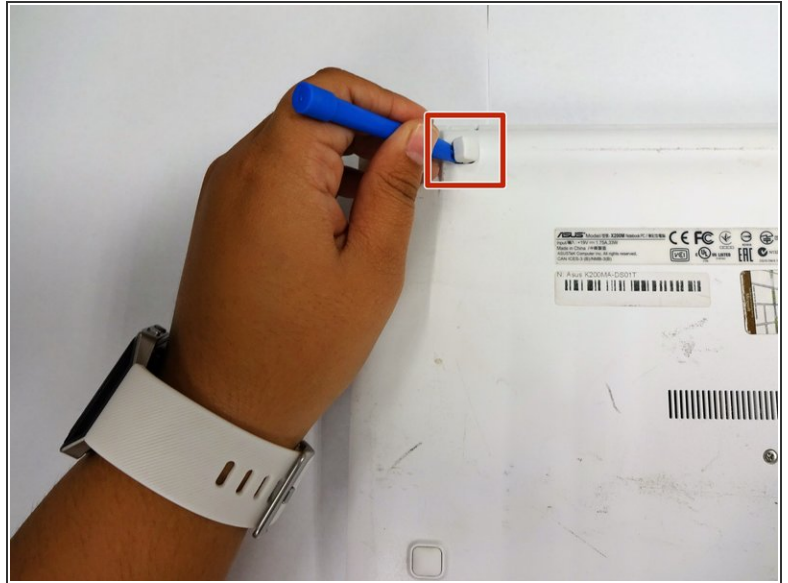
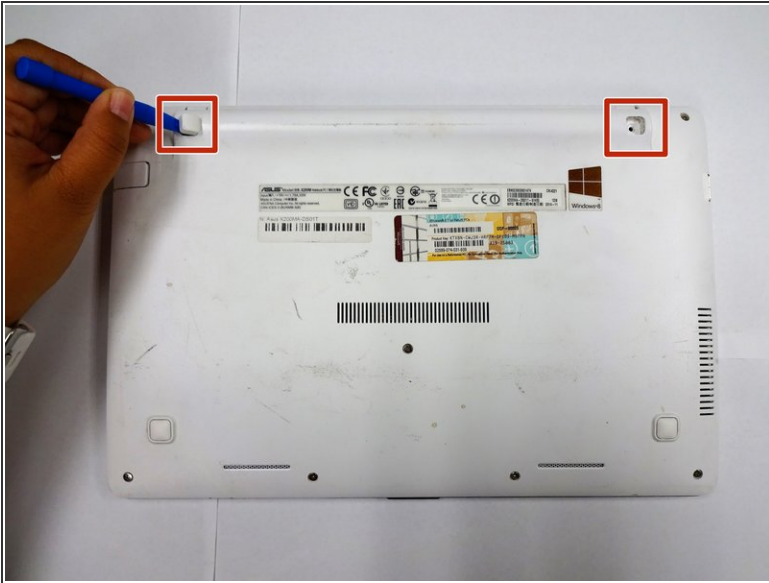
## Step 1 — Back Panel



- With the opening facing you, flip the laptop over and remove the following screws from the back panel:
  - Six 4mm Phillips screws using a Phillips #0 screwdriver.
  - One 12mm Phillips screw in the center using a Phillips #0 screwdriver.

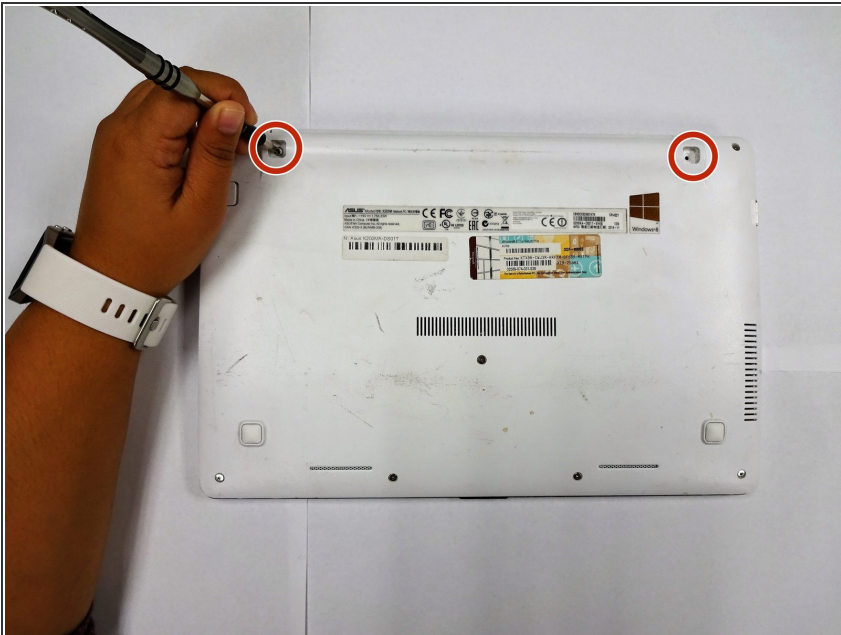


## Step 2



- Using a plastic spudger, remove the two rubber stoppers closest to the hinge to reveal the screws underneath.

## Step 3



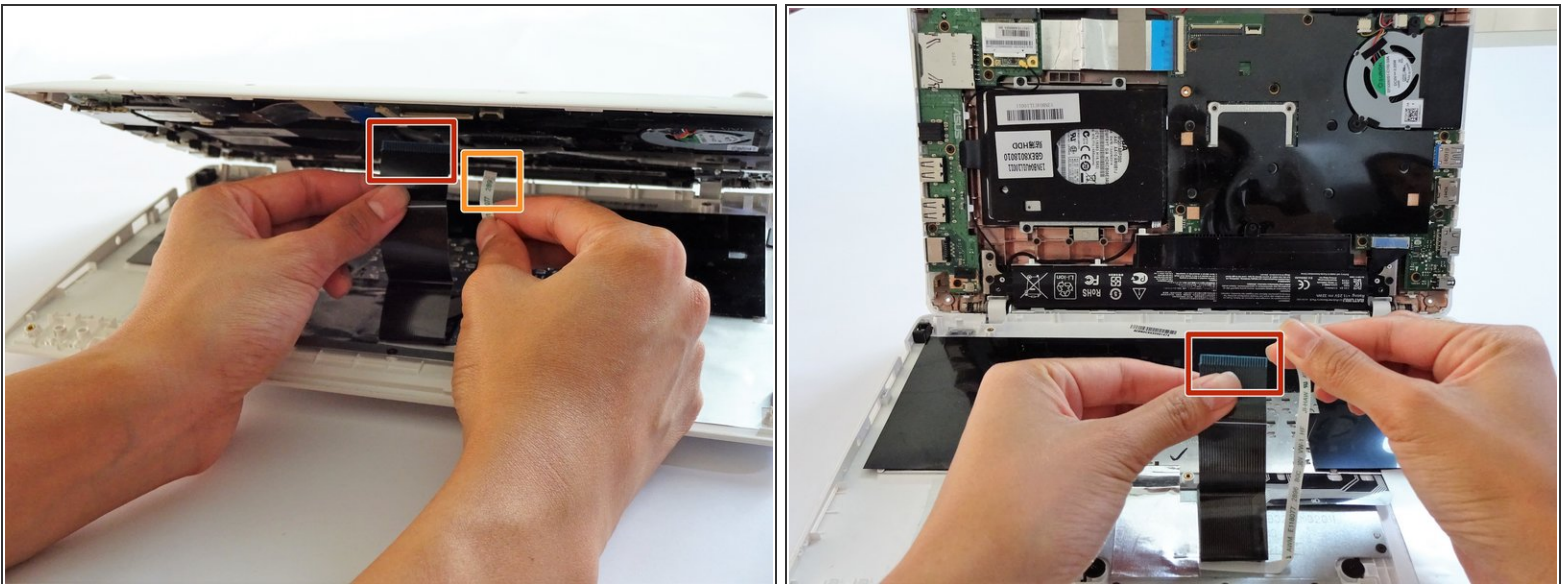
- Remove the following screws:
  - Two 4mm Phillips screws using a Phillips #0 screwdriver.

## Step 4



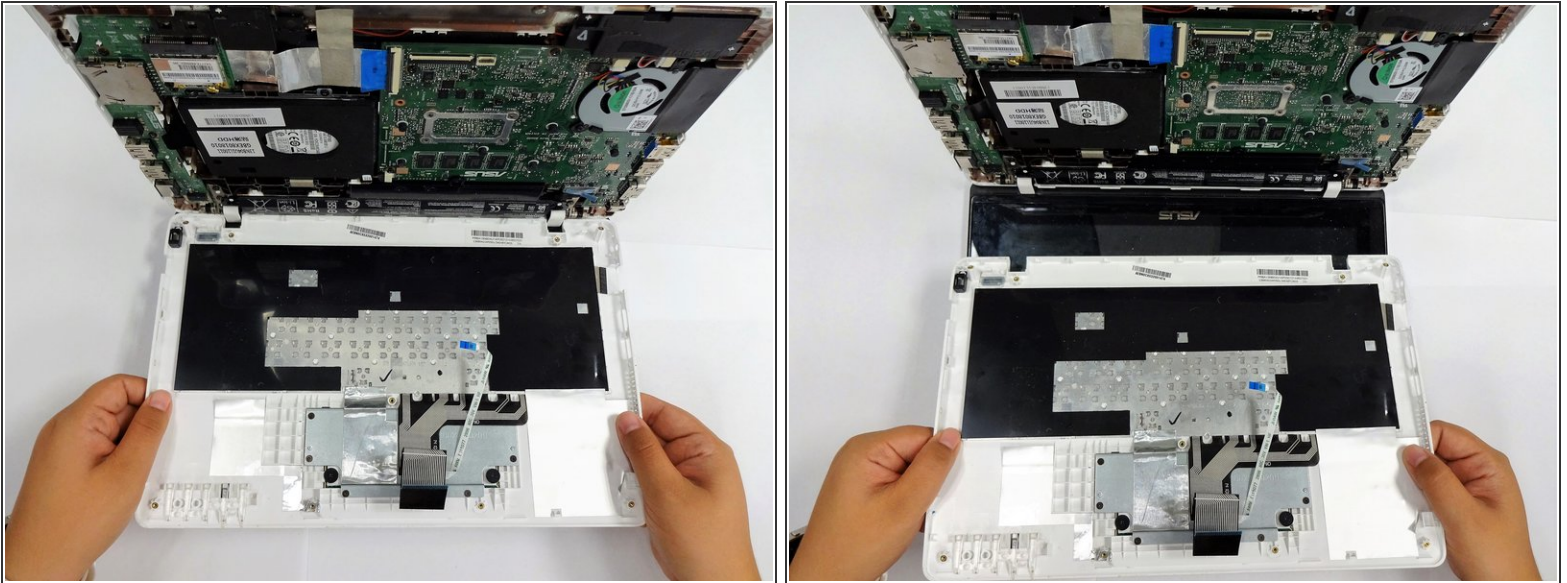
- Using a plastic spudger (and a fair amount of force), pry the back panel up from the keyboard to separate.
- ❗ You may have to use one spudger to wedge between the back panel and keyboard while using another to pry it open in a different spot.

## Step 5 — Keyboard



- To disconnect the keyboard connectors from keyboard and back panel, gently pull wide keyboard connector out.
- Gently pull the narrow connector away from the keyboard.

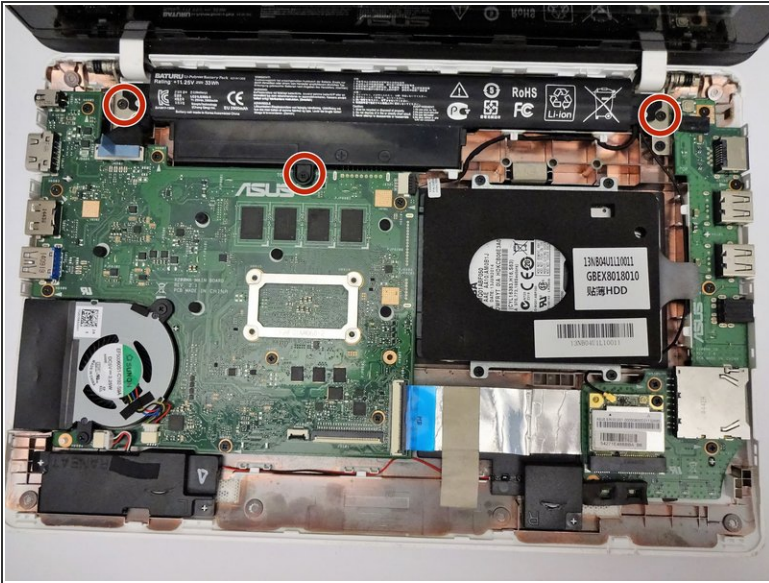
## Step 6



- Now that the keyboard connectors are unplugged, pull the keyboard off and away from the back panel hinges.



## Step 7 — Battery



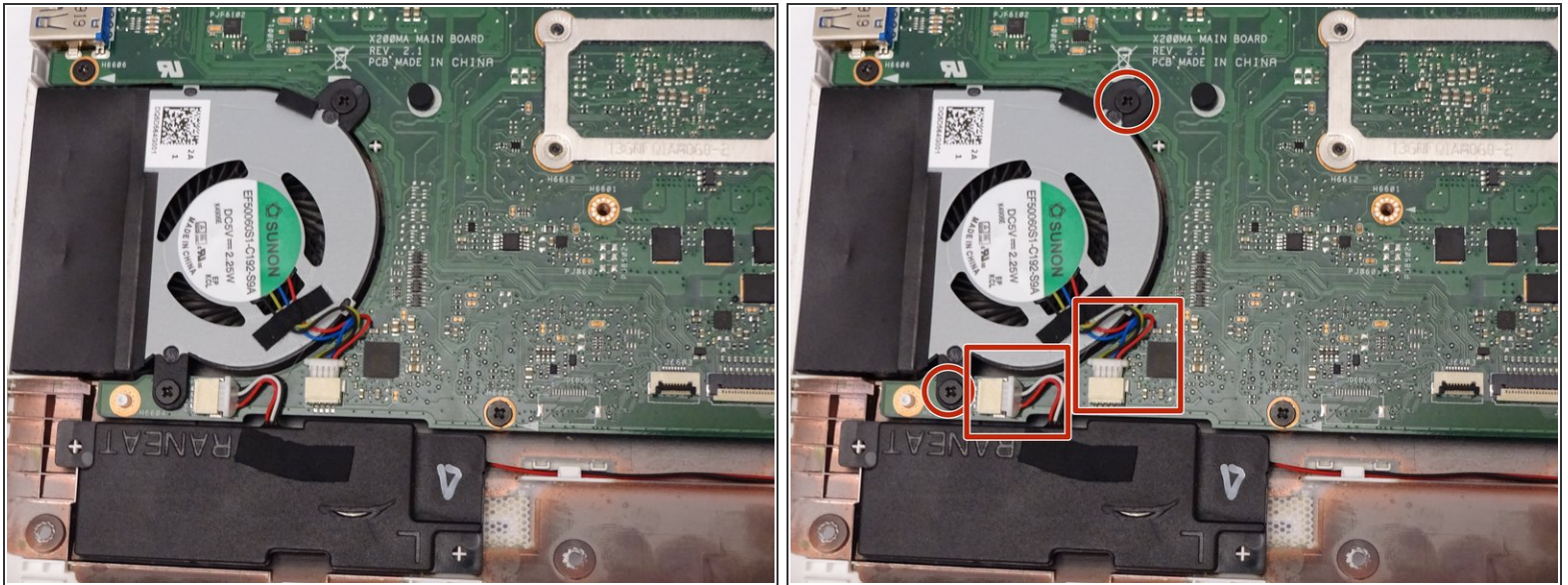
- Flip the computer over so that the side with the motherboard (large green piece) is laying face-up.
- Remove the following screws from the middle and far ends of the battery:
  - Three 4mm Phillips screws using a Phillips #0 screwdriver.
- ❗ The battery will be located closest to the screen.

## Step 8



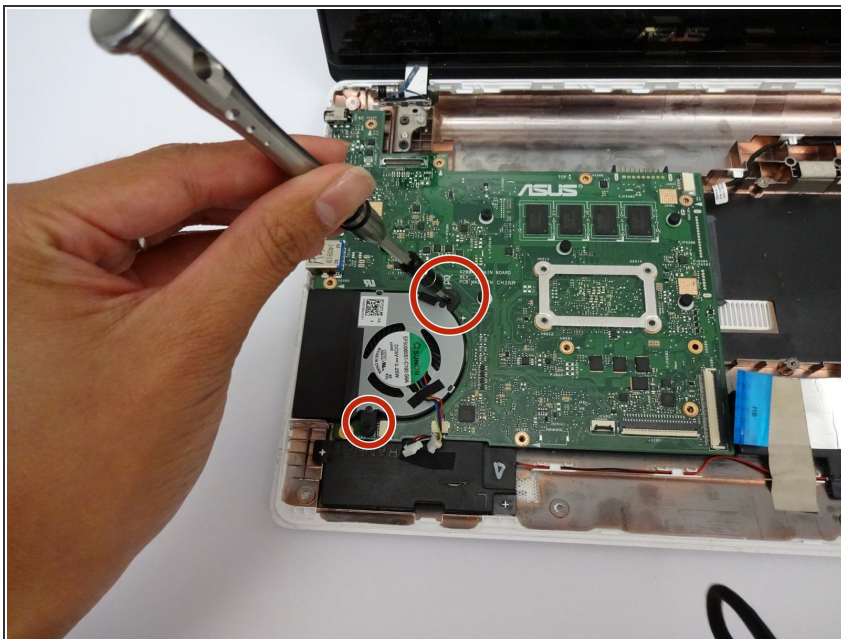
- Gripping the wider left section, lift the battery up and away from computer.

## Step 9 — Fan



- Locate the fan, two screws and two color coded wires in the bottom left corner of the computer.

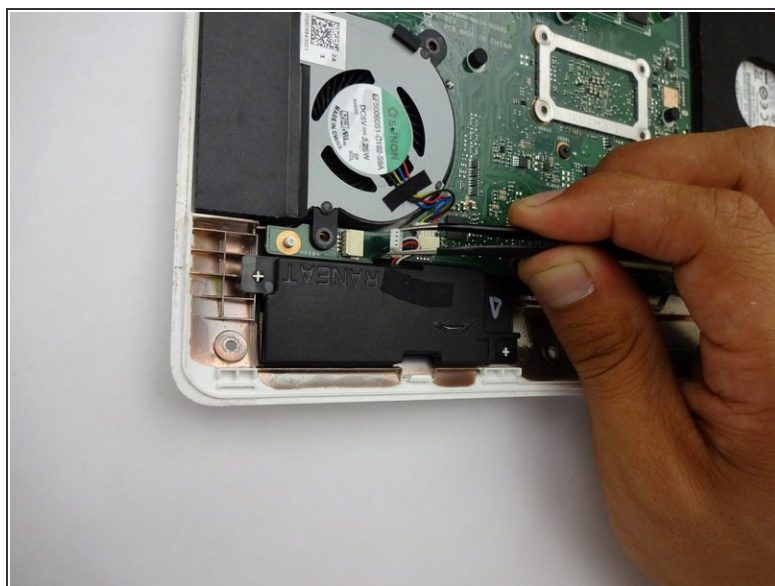
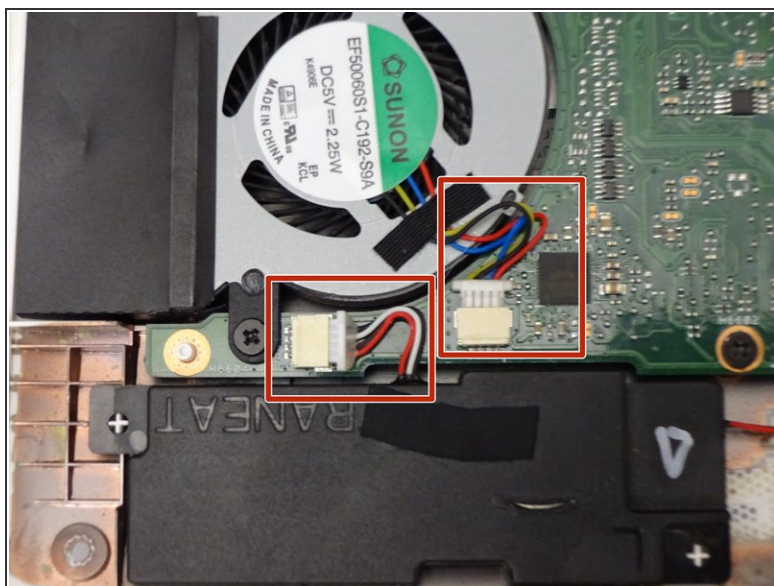
## Step 10



- Remove the following screws from the fan:
  - Two 4mm screws using a Phillips #0 screwdriver.

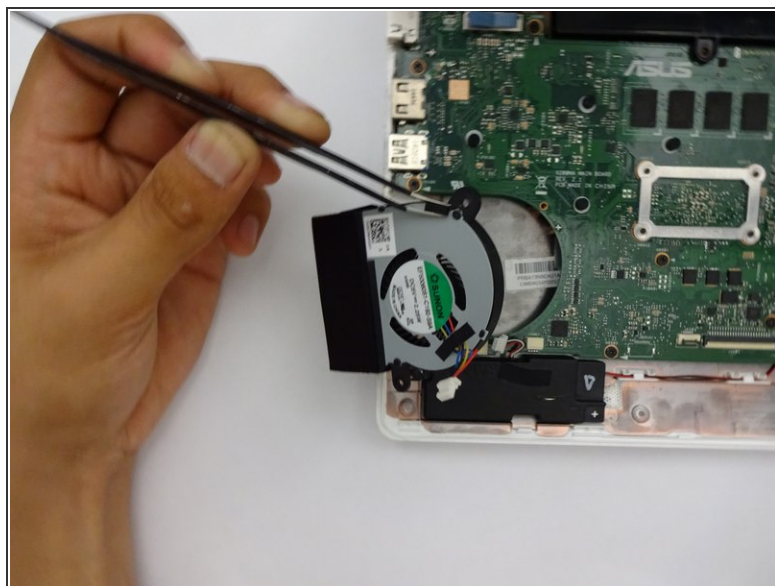
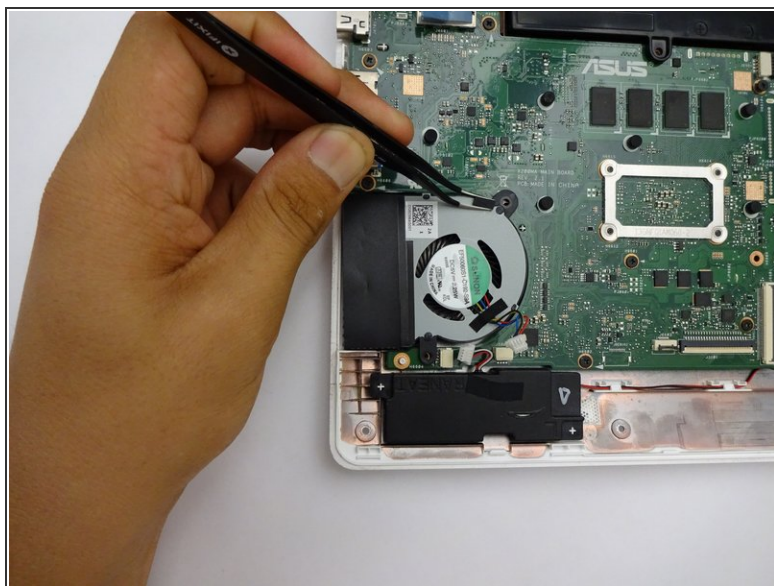


## Step 11




- Firmly pull colored wires away from wire slot.

## Step 12

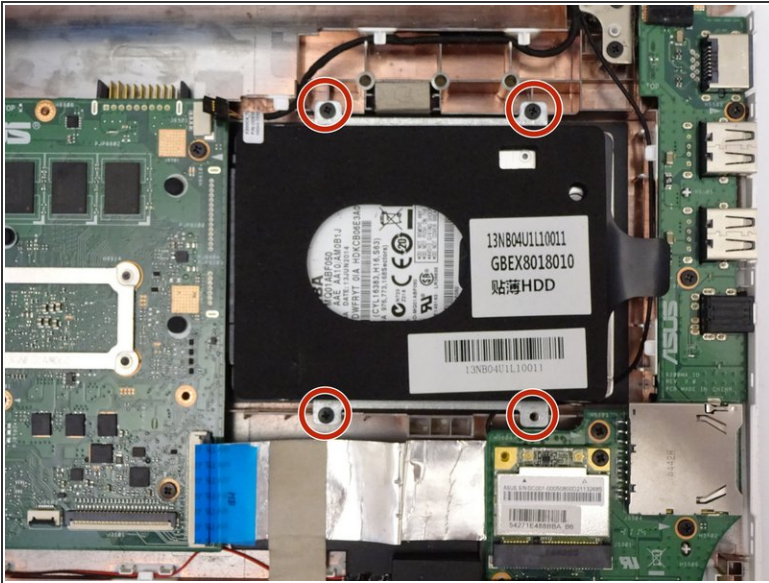


- After removing both the screws and color coded wires, lift fan out of place.

 Tools such as spudgers or tweezers may be used for fan removal.

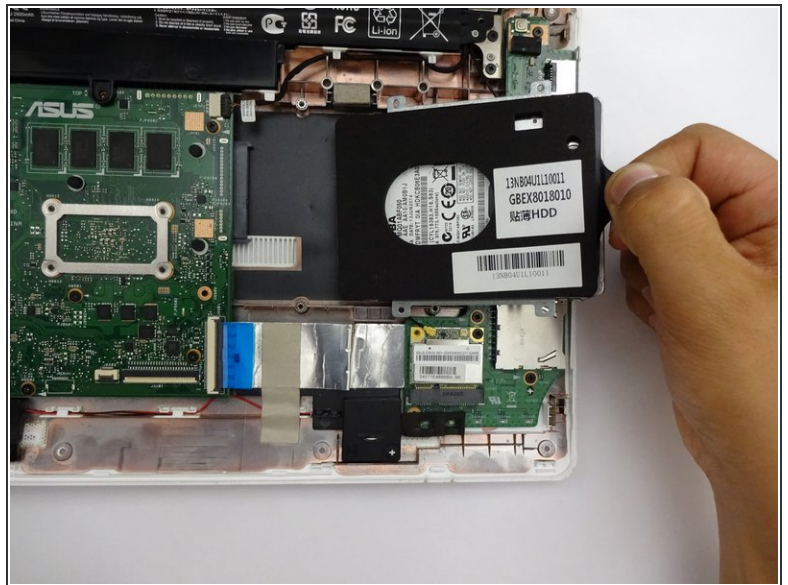


## Step 13 — Hard drive



- Remove the following screws:
  - Four 4mm Phillips screws using a Phillips #0 screwdriver.

## Step 14



- Remove by sliding hard driving right and away from the computer using the tag on the right side.

To reassemble your device, follow these instructions in reverse order.