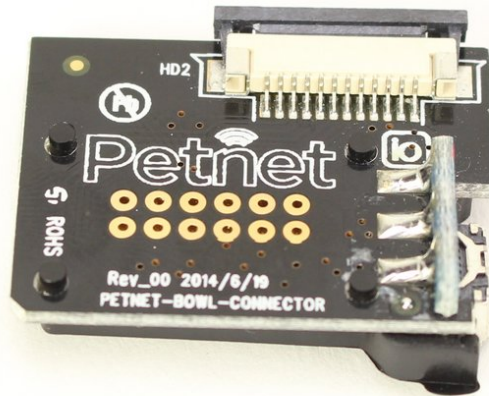




# Petnet SmartFeeder SF10E Charging Assembly Replacement

Replace your charging assembly to charge your Petnet SmartFeeder SF10E and eliminate low battery warnings.

Written By: Kristin Villanueva



---

## INTRODUCTION

Use this guide to replace your charging assembly if it is damaged and cannot connect to the USB charging cable. When working with electrical components, use steady hands and touch as little of the circuitry as possible.



### TOOLS:

- [Tweezers](#) (1)
  - [Phillips #1 Screwdriver](#) (1)
  - [Spudger](#) (1)
-

## Step 1 — Battery



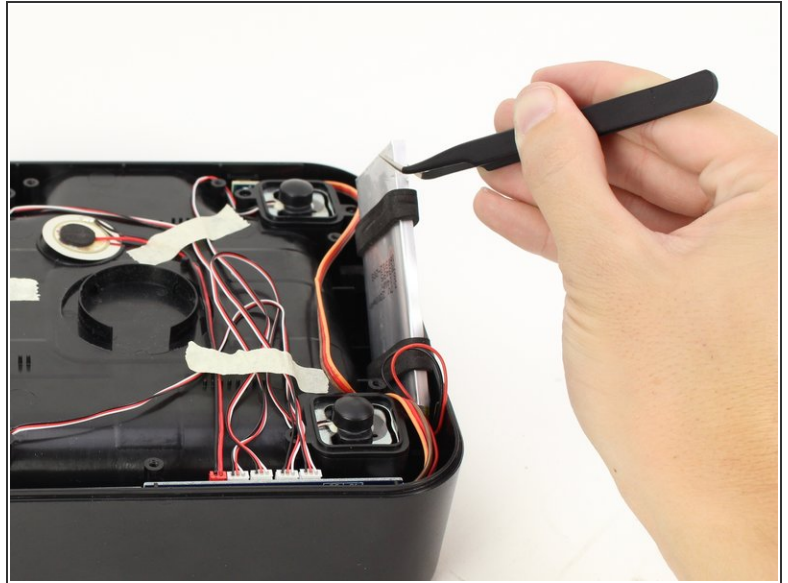
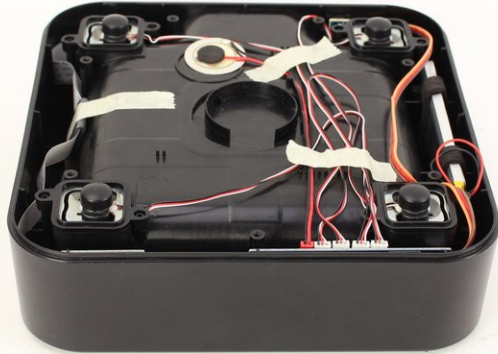
- Eject the SmartBowl by pressing the button located at the front of the SmartFeeder base.
- Remove the metal tray by using both hands and pulling out the bowl towards you.

## Step 2



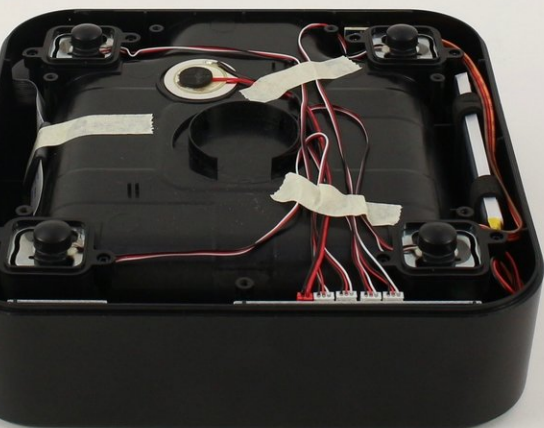
- Turn the bowl tray side down by using both hands.
- Remove seven 11 mm screws by using the Phillips #1 screwdriver.

### Step 3



- Take the battery out of the SmartBowl with tweezers, avoid pulling on any wires.
- ⓘ Hold the SmartBowl down using one hand while using the other hand to remove the battery.

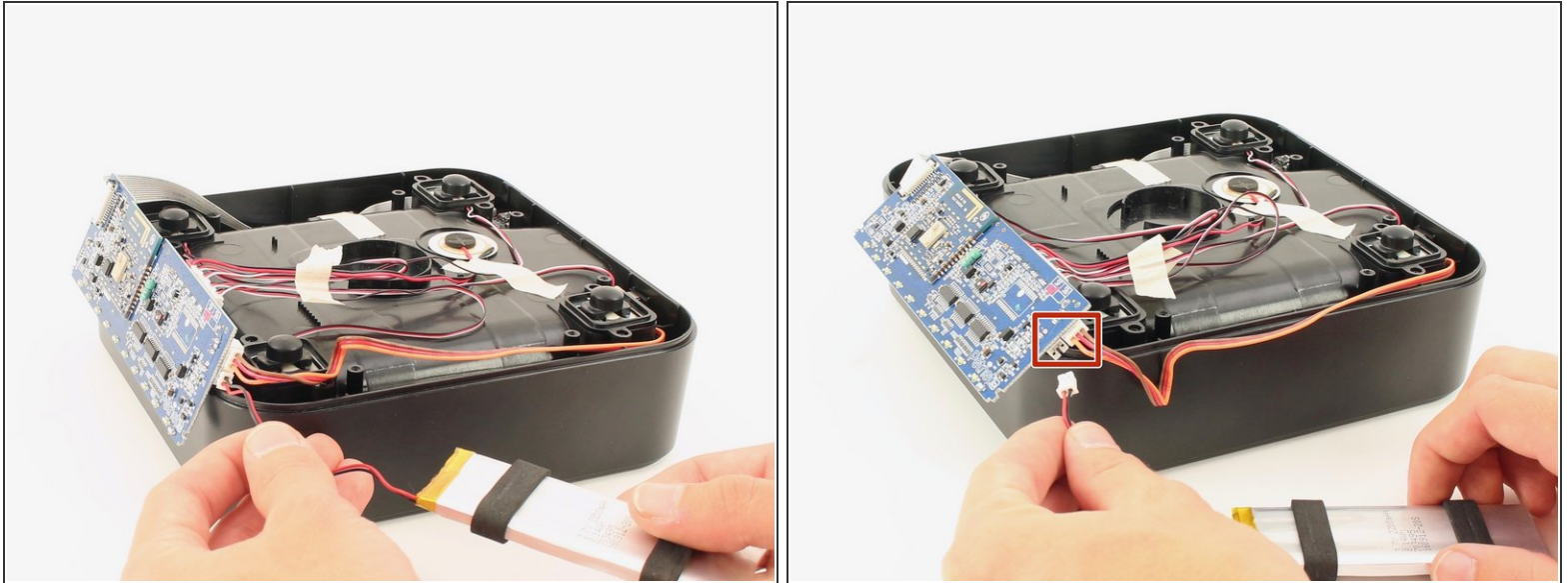
### Step 4



- Remove the tape, closest to the four white connectors, with your hands.
- ✦ Keep the wires attached to the tape for easy reassembly.

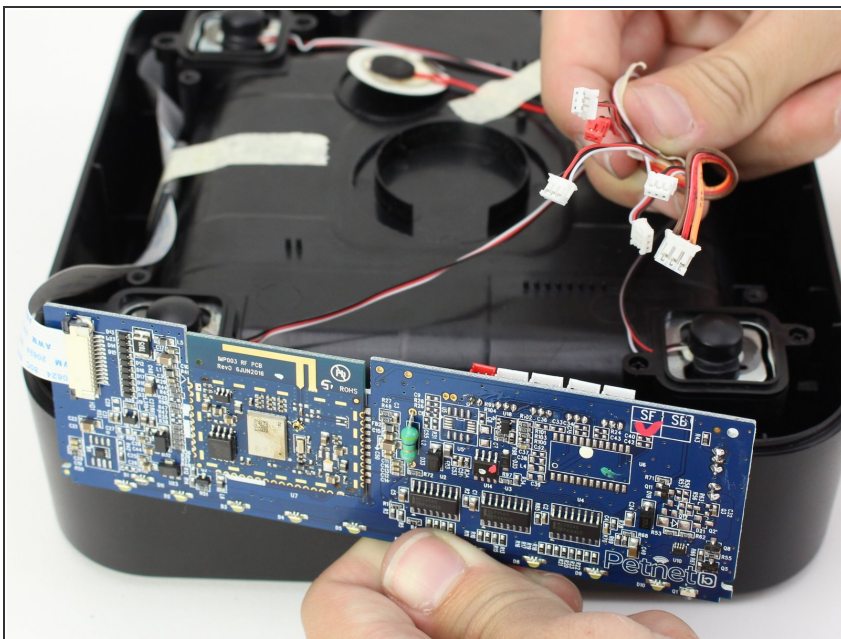


## Step 5



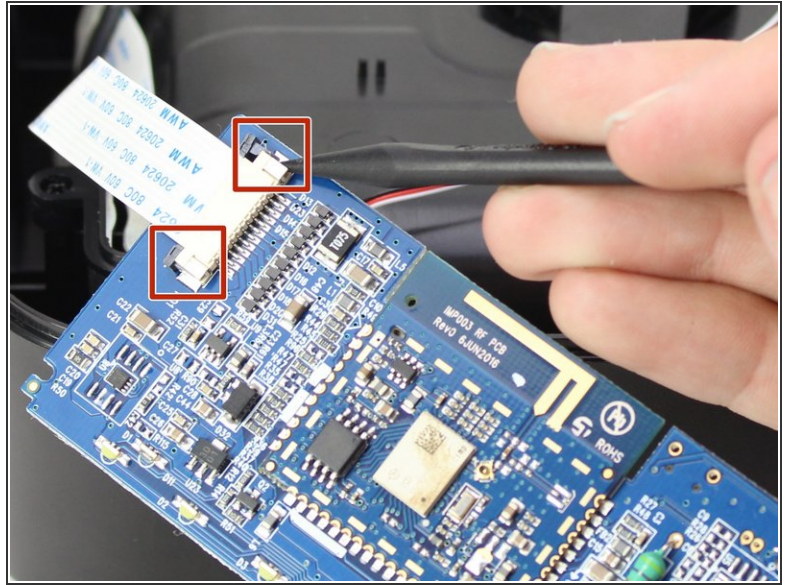
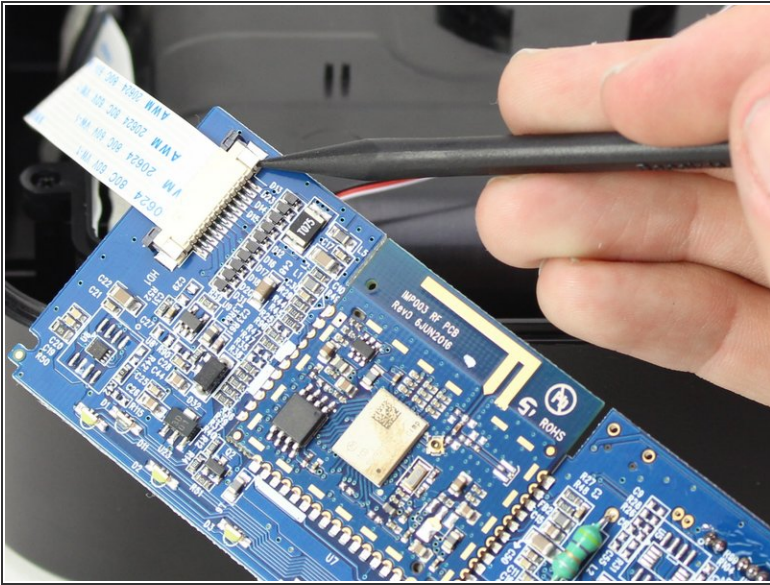
- Trace the wires with your hands from the battery to the motherboard.
  - Detach the three-prong connector between the battery and the motherboard by pulling the white connectors with your hands.
- ⚠ Hold on to the sockets on the motherboard or you could accidentally pull off the entire assembly.

## Step 6 — Motherboard



- Remove the remaining 3-prong connectors by carefully pulling outwards.
- ⚠ Hold on to the sockets on the motherboard or you could accidentally pull off the entire assembly.

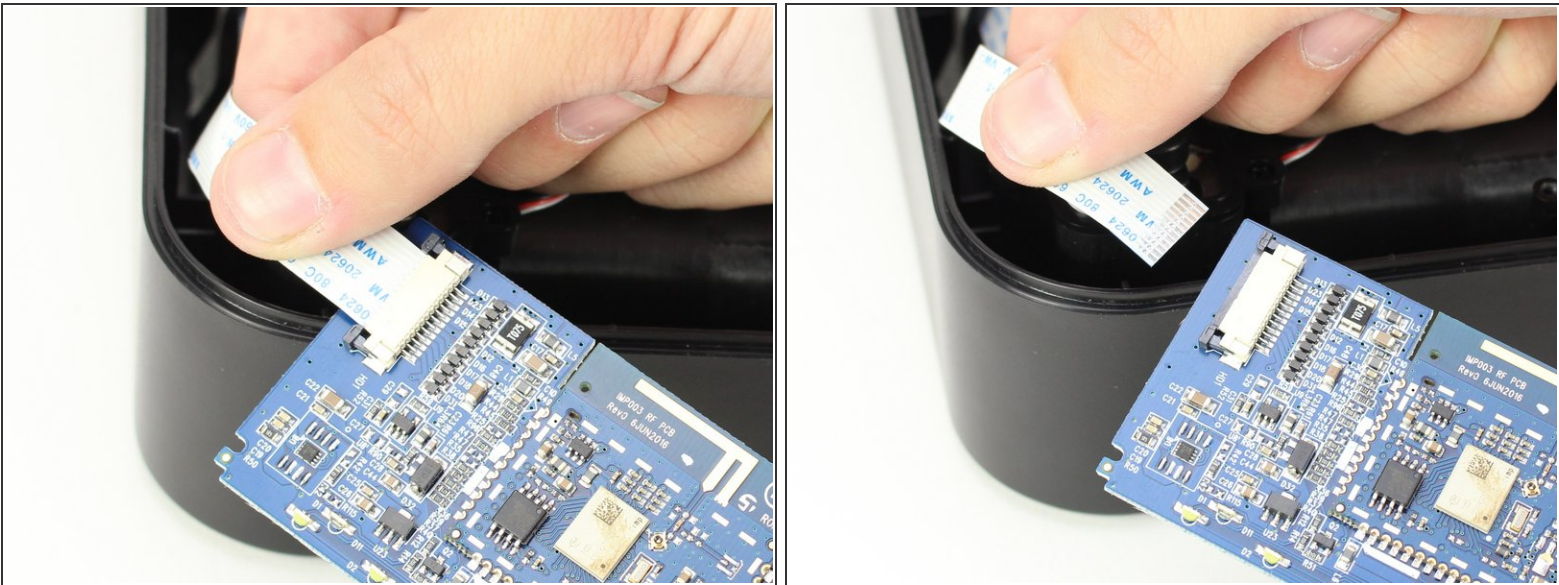
## Step 7



- Push both small gray pieces next to the ribbon connector towards the ribbon to put them in the “open” position using the nylon spudger.

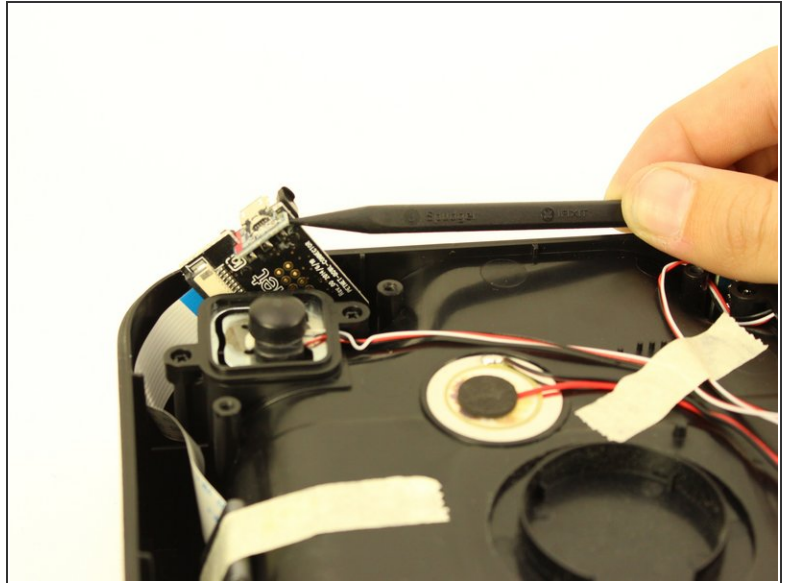
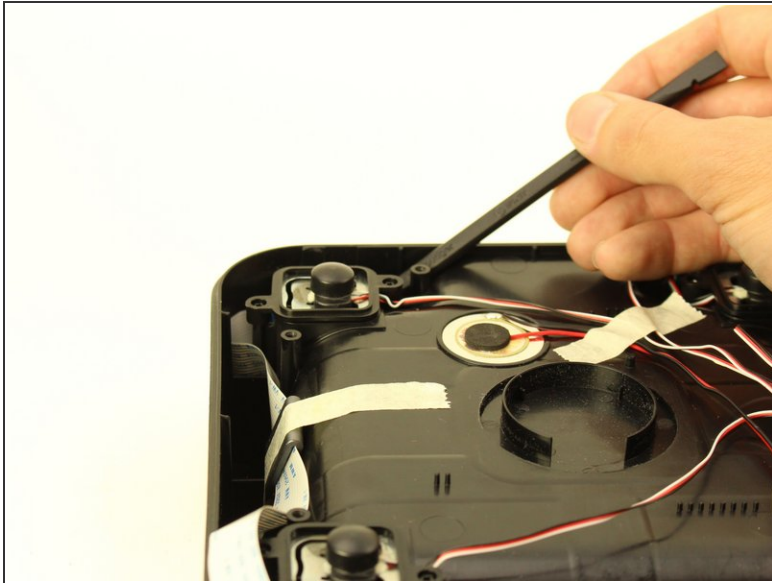


## Step 8



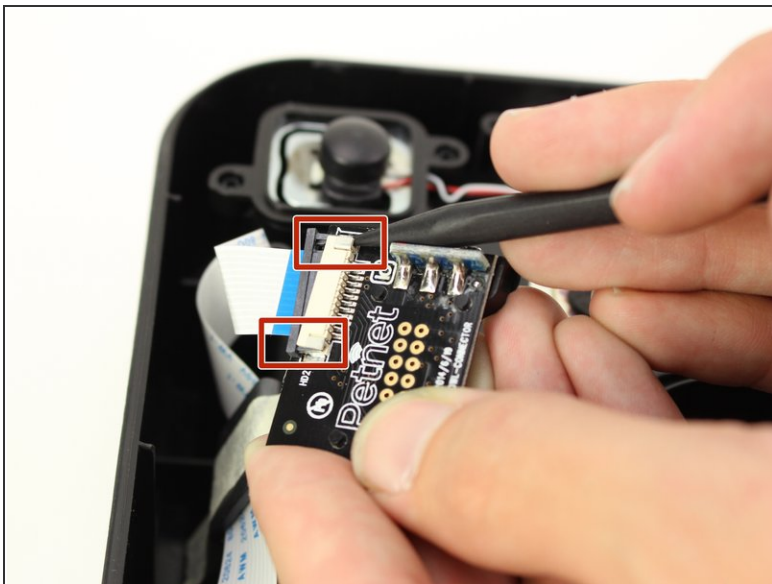
- Remove the ribbon connector from its slot by pulling on it with a couple fingers.
- ⚠ The ribbon should come out easily with the gray pieces in the "open" position. Do not use too much force with the ribbon or it could be damaged.
- 👉 Make sure the gray pieces are in the "open" position when you reassemble the ribbon connector or the connector will not go into its slot. Once the connector is in the slot, slide the gray tabs back down into the "closed" position

## Step 9 — Charging Assembly



- Use the nylon spudger to remove the charging assembly from the SmartBowl.

## Step 10

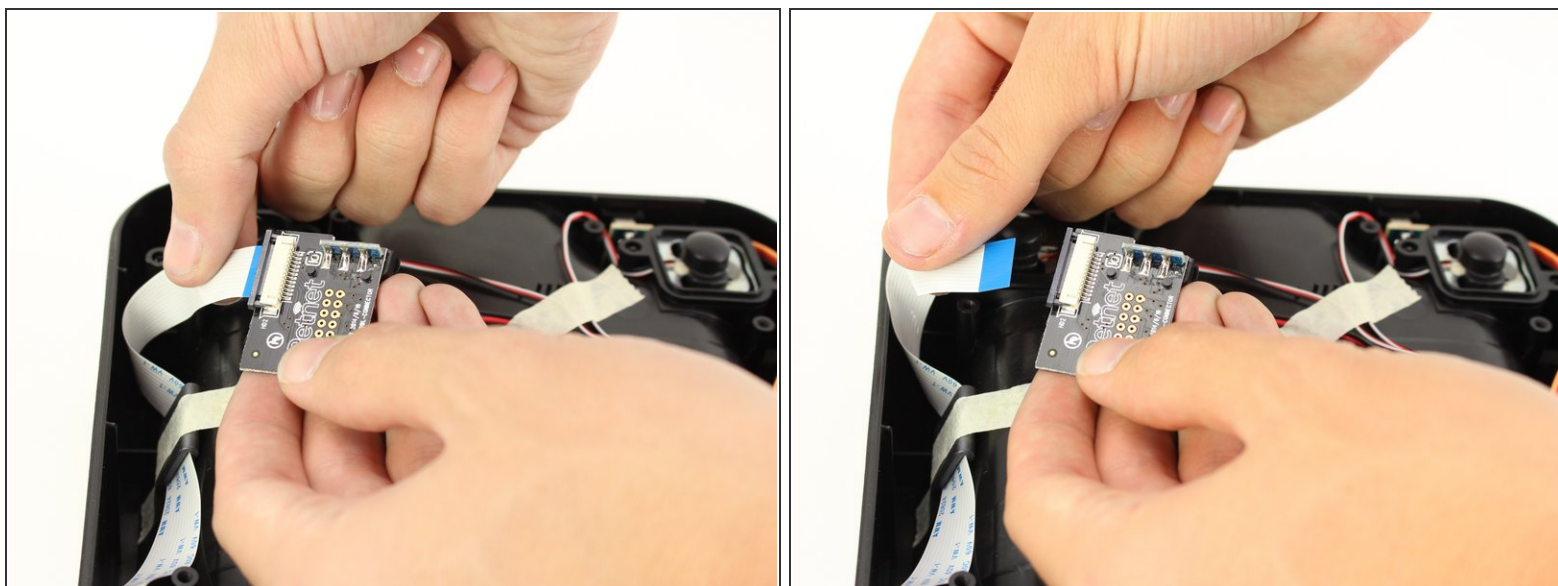


- Push the small gray pieces on the ribbon connector into the “open” position with the nylon spudger.

⚠ Do not to use too much force when removing the ribbon or any of the electrical components because they are sensitive and delicate.



## Step 11



- Pull the ribbon connector out of its slot using one hand and another hand on the base of the charging assembly.
- ☑ Make sure the gray pieces are in the “open” position when you reassemble the ribbon connector or the connector will not go into its slot.

To reassemble your device, follow these instructions in reverse order.