



Hover-1 H1 Shell Replacement

How to replace the shell of the Hover-1 H1 hoverboard.

Written By: Sara Passantino



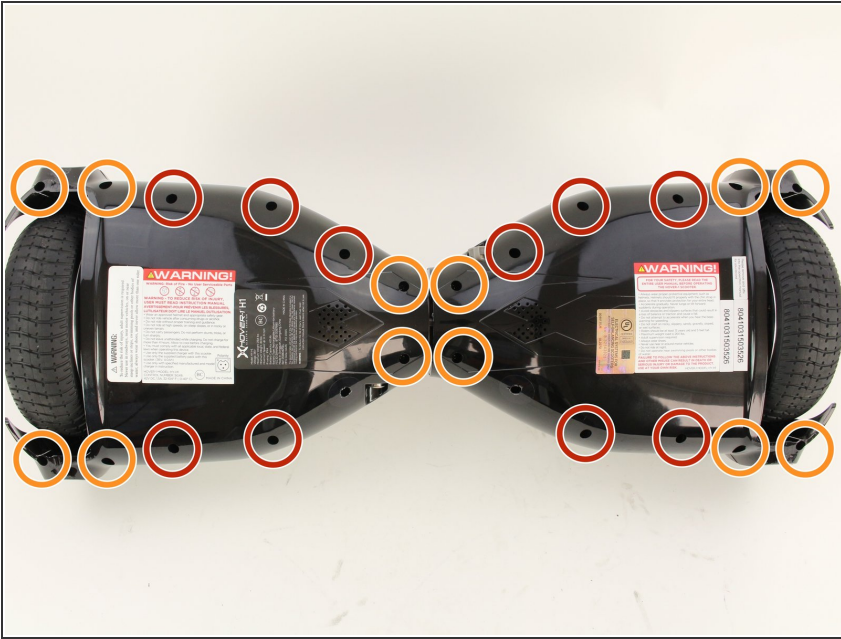
INTRODUCTION

This guide explains how to replace the shell of your Hover-1 H1 hoverboard.

TOOLS:

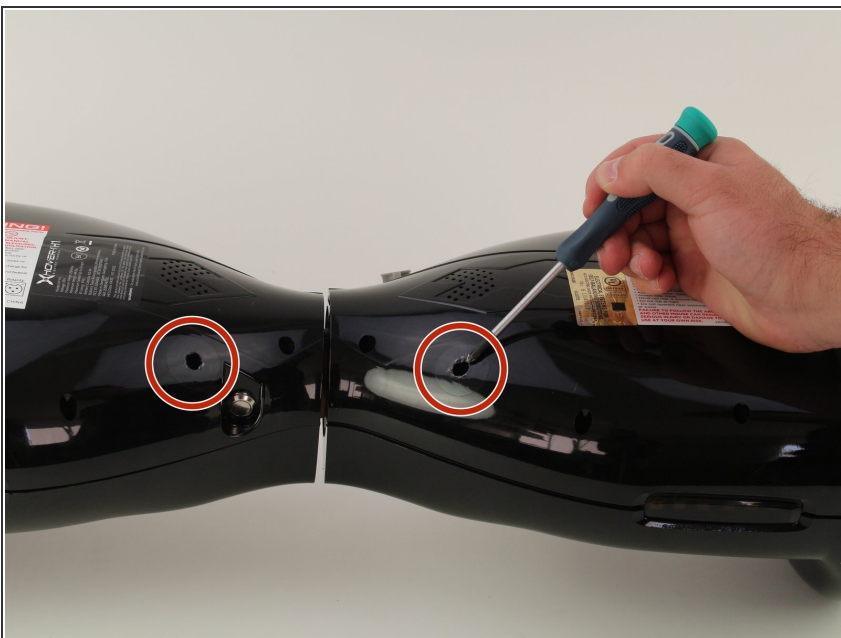
- [Utility Knife](#) (1)
 - [Phillips #2 Screwdriver](#) (1)
 - [Phillips #0 Screwdriver](#) (1)
 - [Adjustable Wrench](#) (1)
-

Step 1 — Bottom Shell



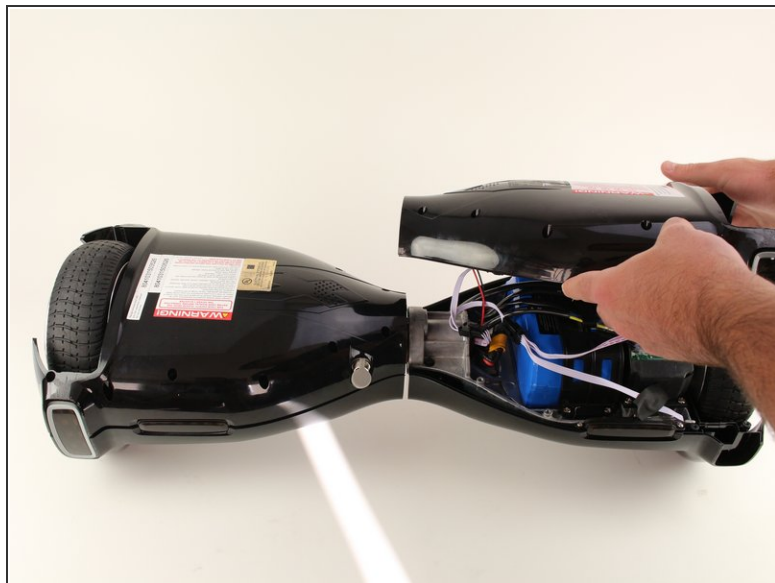
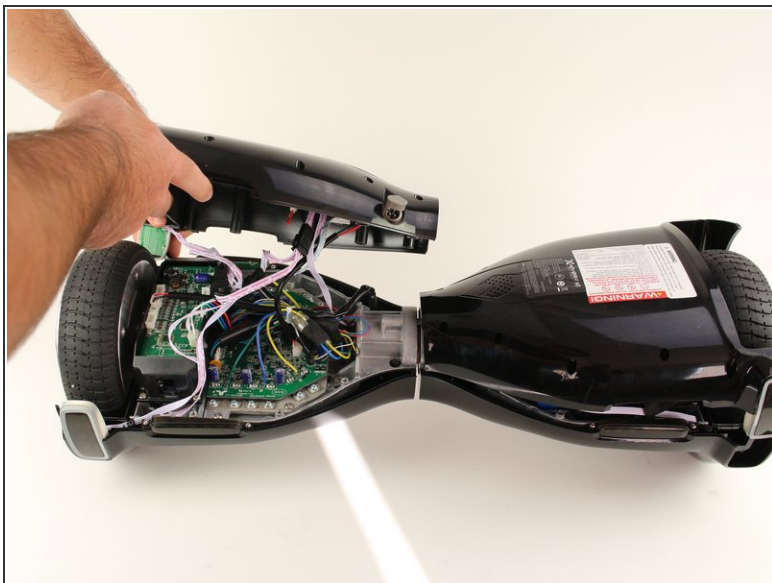
- Remove the ten 9mm machine screws by using a long Phillips #2 screwdriver to rotate the screws counterclockwise.
- Remove the twelve 9mm sheet metal screws by using a long Phillips #2 screwdriver to rotate the screws counterclockwise.

Step 2



- Puncture the two black stickers by using the tip of a screwdriver.
- Remove the two 9mm machine screws by using a long Phillips #2 screwdriver to rotate the screws counterclockwise.

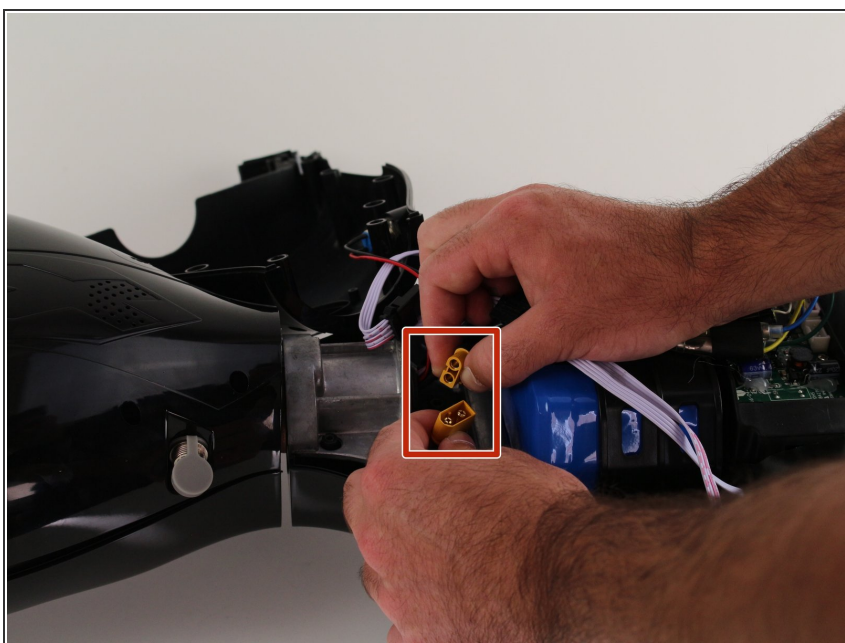
Step 3



- Lift each side of the bottom shell by pulling up.

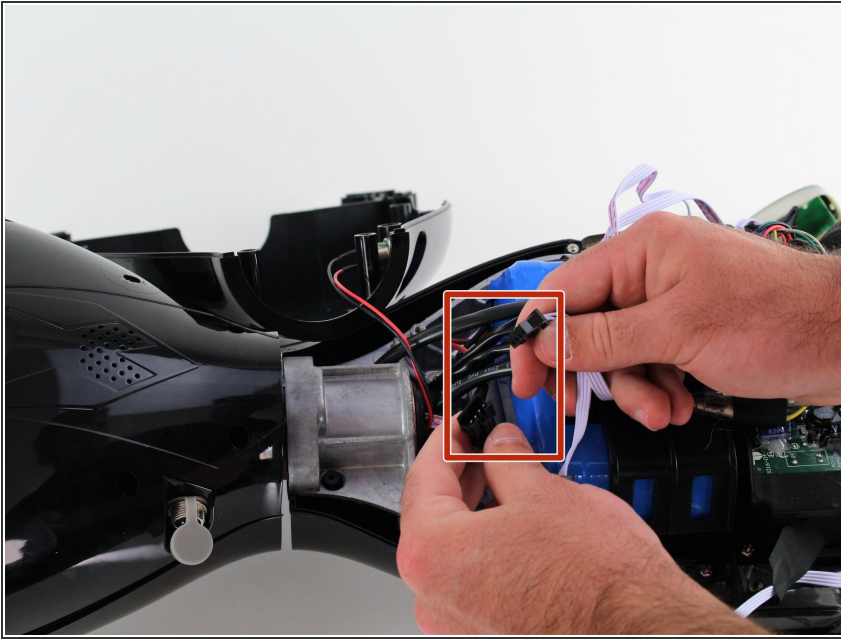
⚠ When lifting the shell, take care to not tear any cables from their connectors.

Step 4



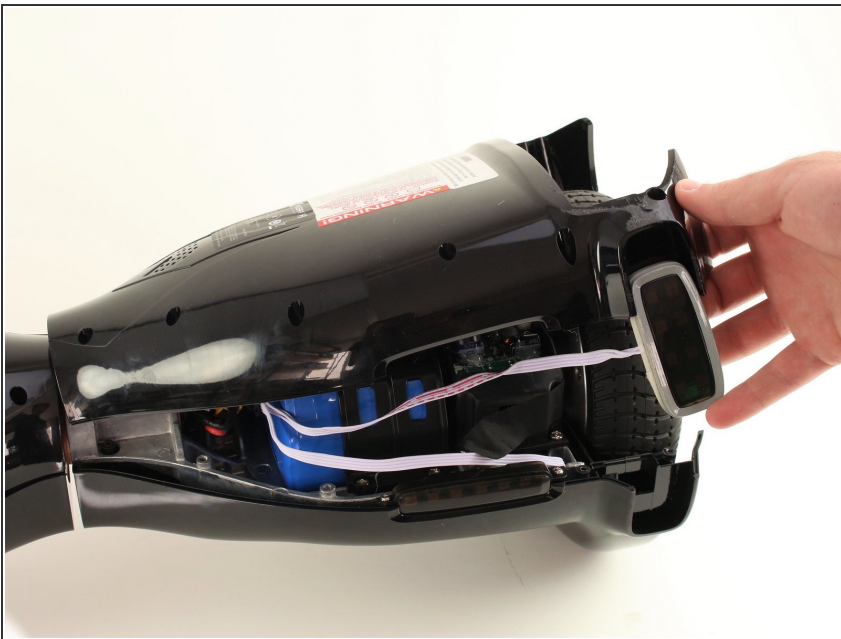
- Unplug the battery by pulling gently on both sides of the orange connector.

Step 5 — LED Headlights



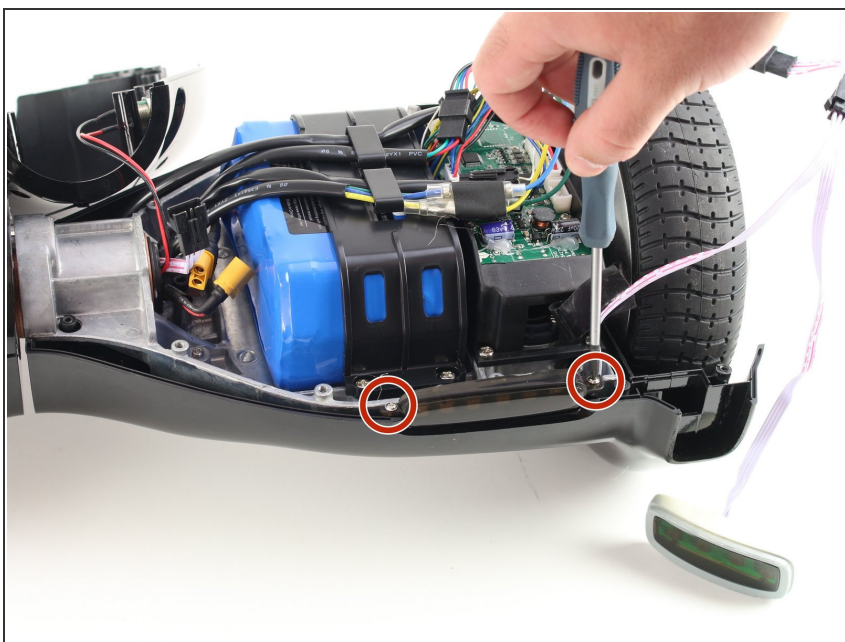
- Unplug the lights from the battery by pulling gently on both sides of the black connector attached to the white wires.

Step 6



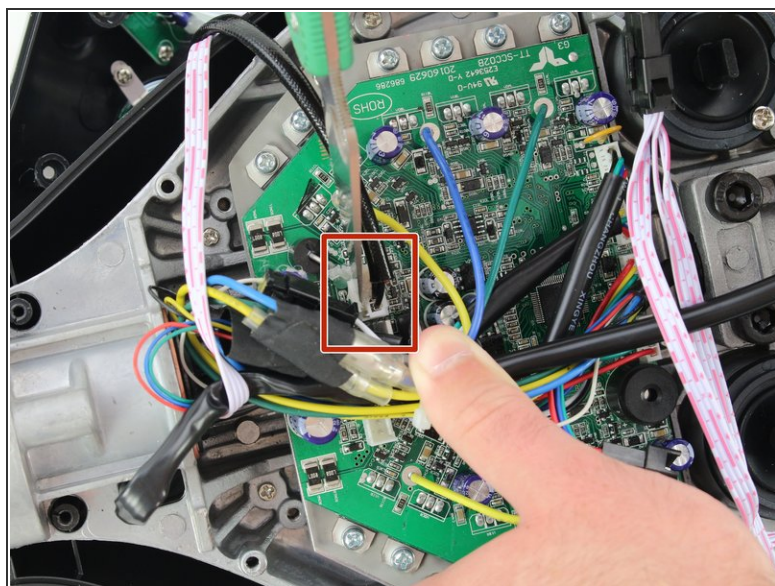
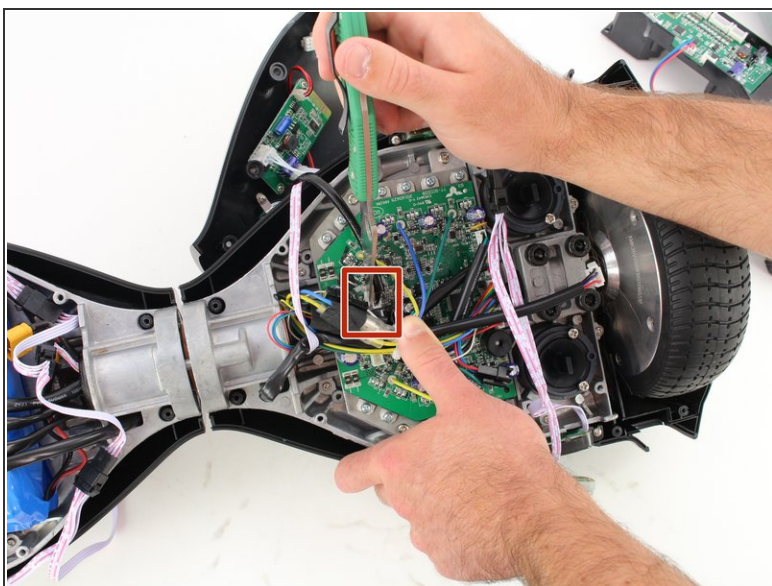
- Remove the vertical light from the shell by using your hands to pull it free from the surrounding shell.

Step 7



- Remove two 8mm screws using a Phillips #0 screwdriver to rotate the screws counterclockwise.
- Remove the horizontal light by using your fingers to pull the light up out of the shell.

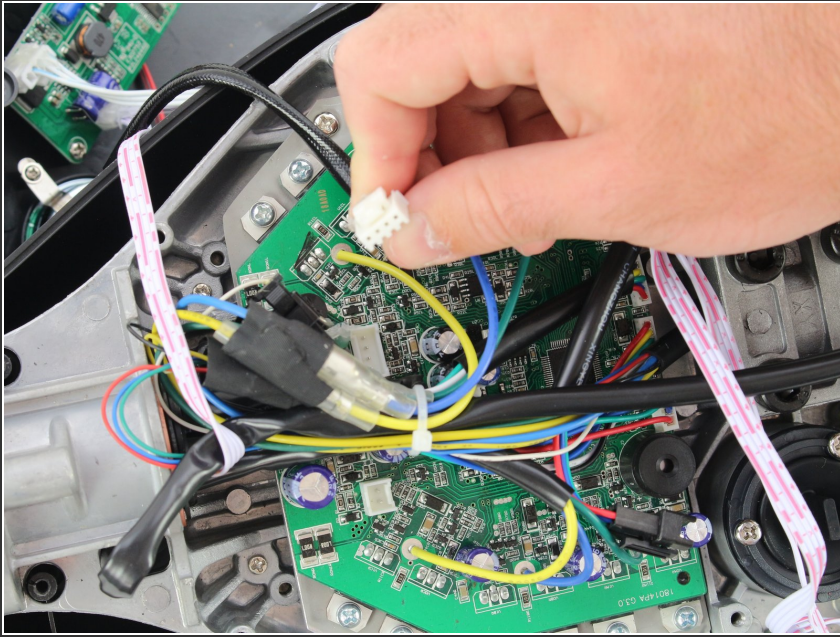
Step 8 — Charging Port



- Using a utility knife, scratch off the hot glue from the connector attaching the red and black wires to the motherboard.

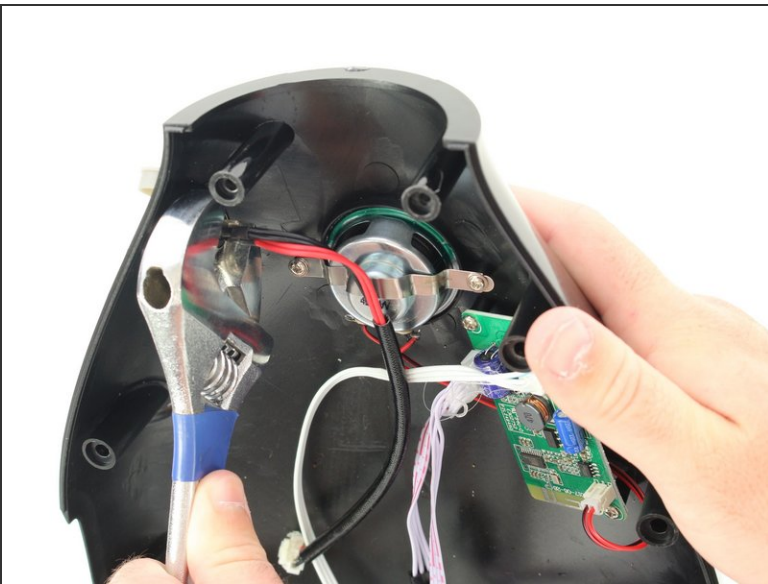
⚠ Be careful to not damage the wires or connector when removing the glue.

Step 9



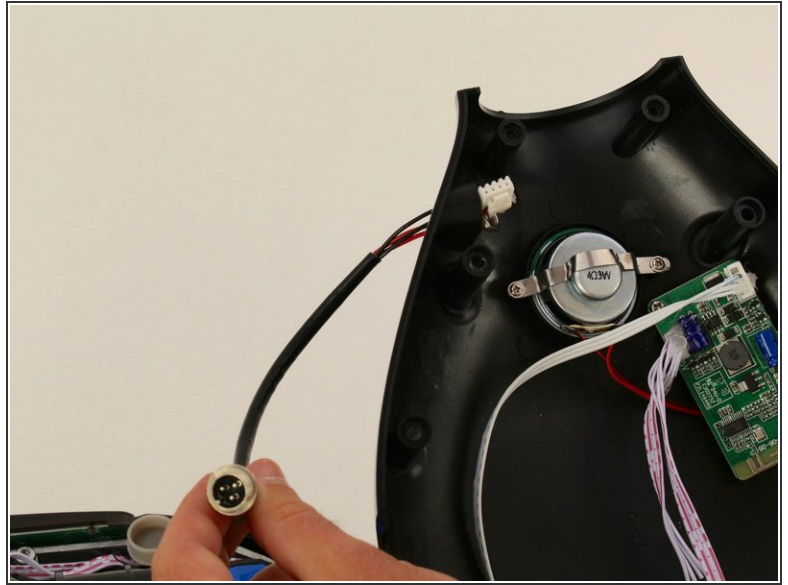
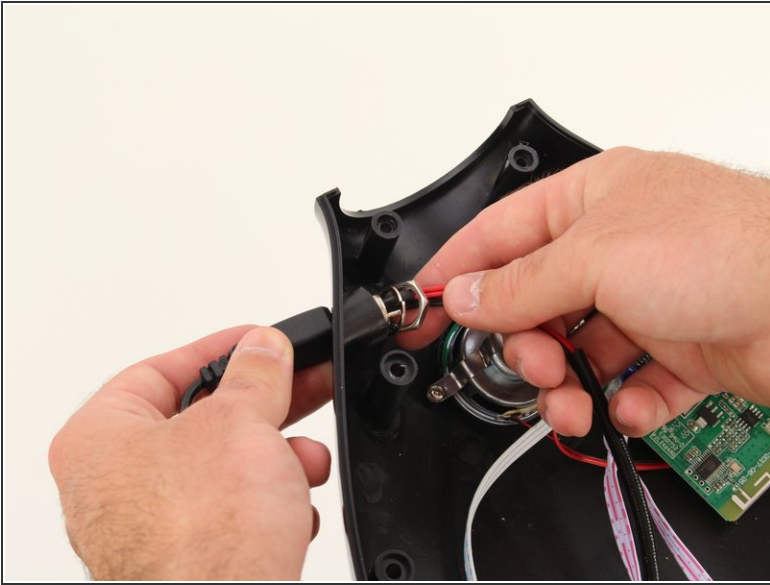
- Remove the charging port connector from the motherboard by squeezing the connector and pulling the connector up.

Step 10



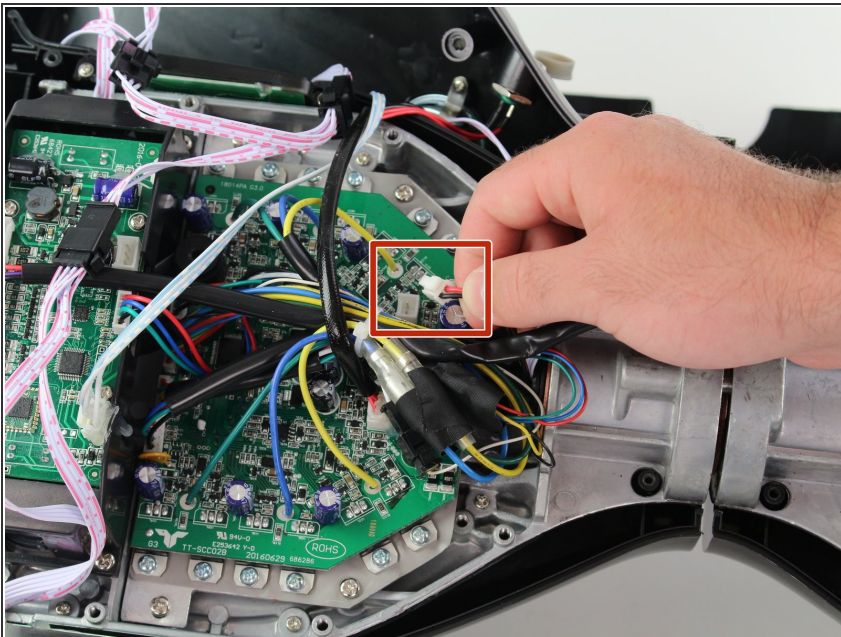
- Using an adjustable wrench, unscrew the nut that is attaching the charging port to the bottom shell.
- i** It might be helpful to put the charger in the charging port while unscrewing the nut to ensure that the port is not spinning.

Step 11



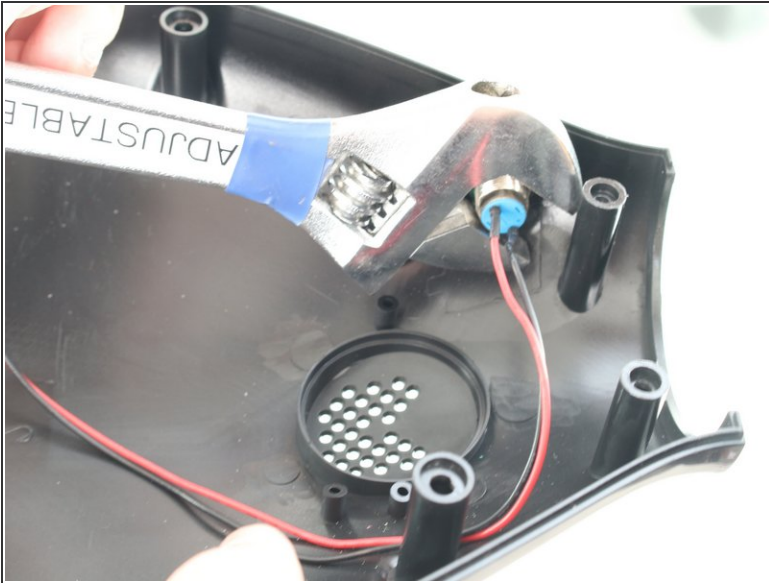
- Pull the charging port to the left through the shell.

Step 12 — Power Button



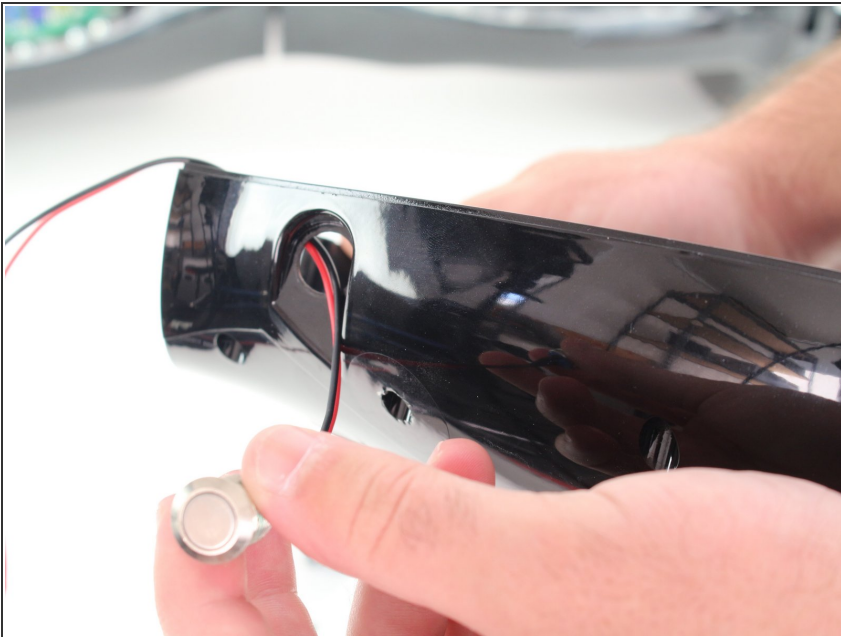
- Unplug the power button connector by pinching the tab on the front and pulling directly upwards.
- Pull the cable through the center section of the hoverboard.
- ☑ For reassembly, you will have to feed the cable back through the center section. This can be done using a rigid wire or cable.

Step 13



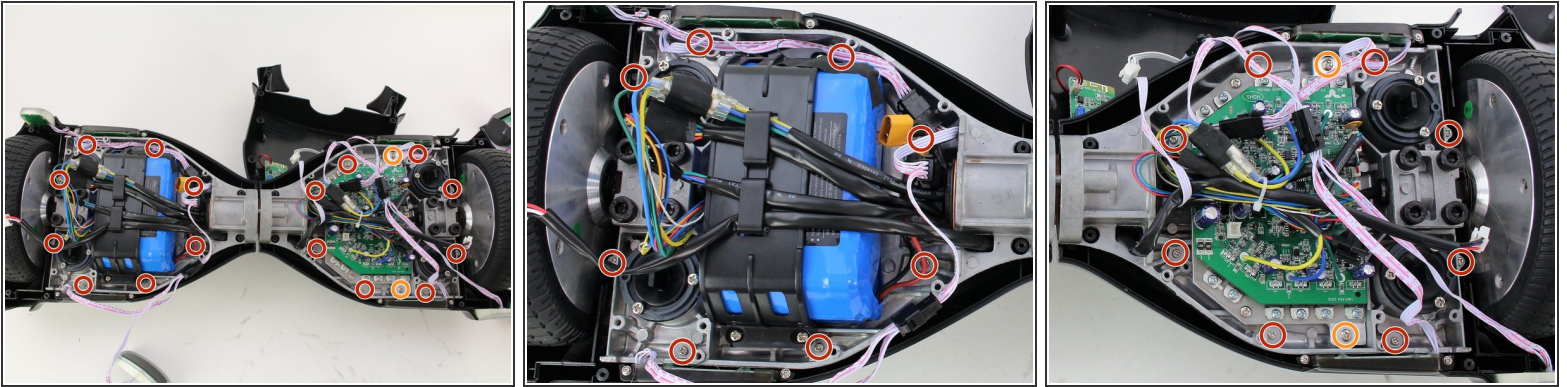
- Using an adjustable wrench, remove the nut on the back of the power button by rotating the nut counterclockwise.

Step 14



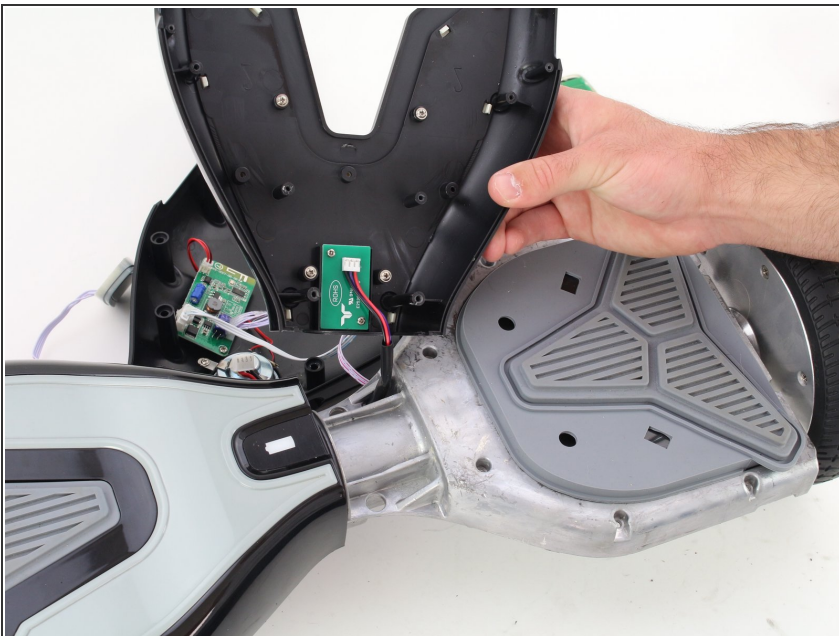
- Pull the power button through the hole in the shell.

Step 15 — Shell



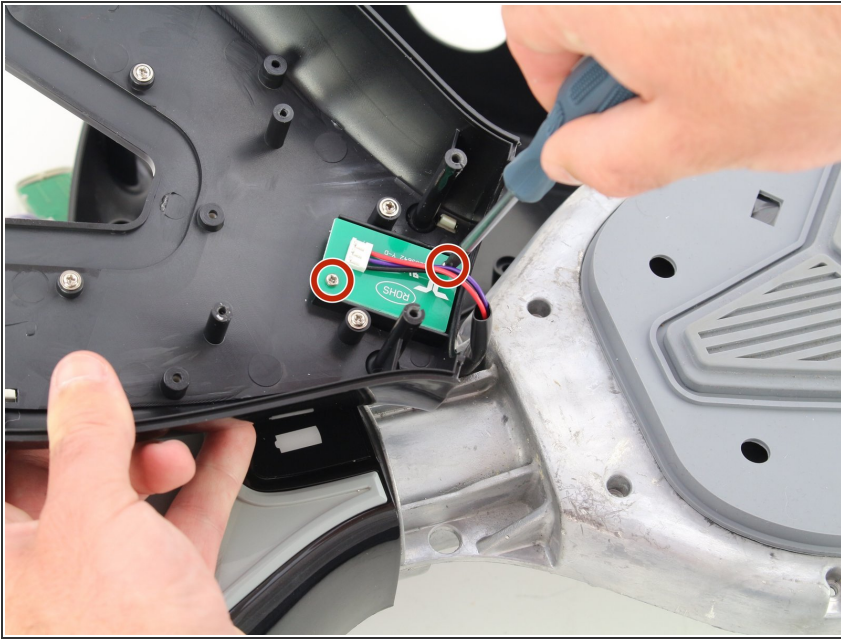
- Remove the sixteen 10mm Phillips #2 machine screws by using a screwdriver to rotate the screws counterclockwise.
- Remove the two 12mm Phillips #2 machine screws by using a screwdriver to rotate the screws counterclockwise.

Step 16



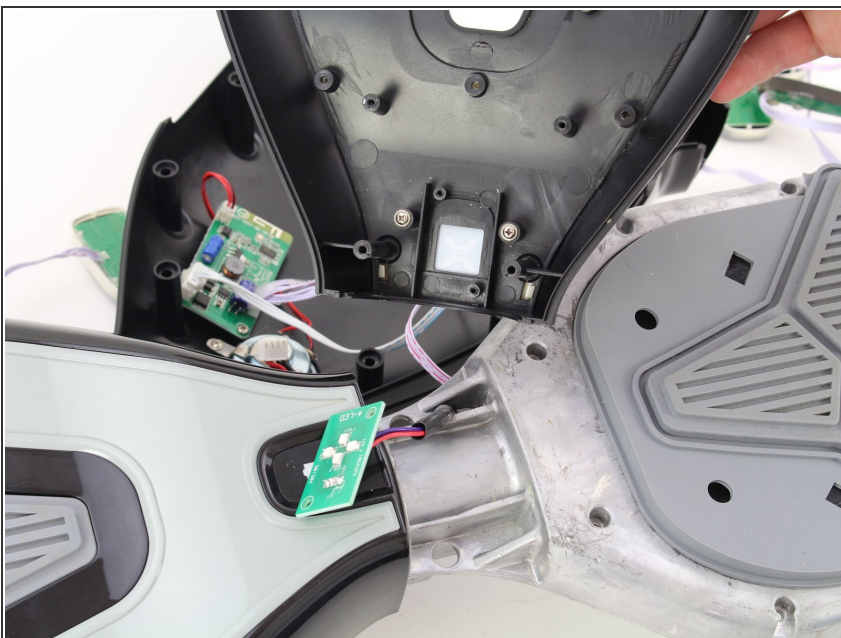
- Lift both the left and right sides of the top half of the shell from the hoverboard's chassis.

Step 17



- Remove the two 8mm Phillips #0 screws on the right half of the shell by using a screwdriver to rotate the screws counterclockwise.
- Repeat for the left side of the shell.

Step 18



- Lift the shell to remove it from the chassis.

To reassemble your device, follow these instructions in reverse order.