



HP Color LaserJet Pro MFP M277dw Power Module Replacement

Replace the power module in an HP Color LaserJet Pro MFP M277dw if the printer does not turn on.

Written By: Lyndon Fresnido



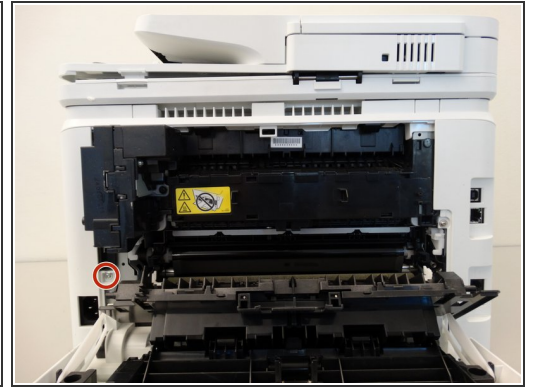
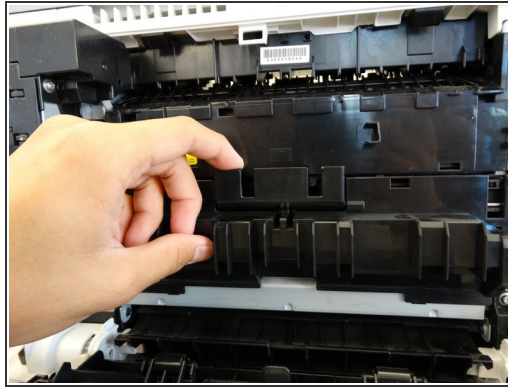
INTRODUCTION

This guide will help you replace your power module in a HP Color Laser Jet Pro MFP M277dw.

TOOLS:

- [Phillips #2 Screwdriver](#) (1)
 - [Metal Spudger](#) (1)
 - *(Optional)*
 - [iFixit Opening Tools](#) (1)
-

Step 1 — Power Module



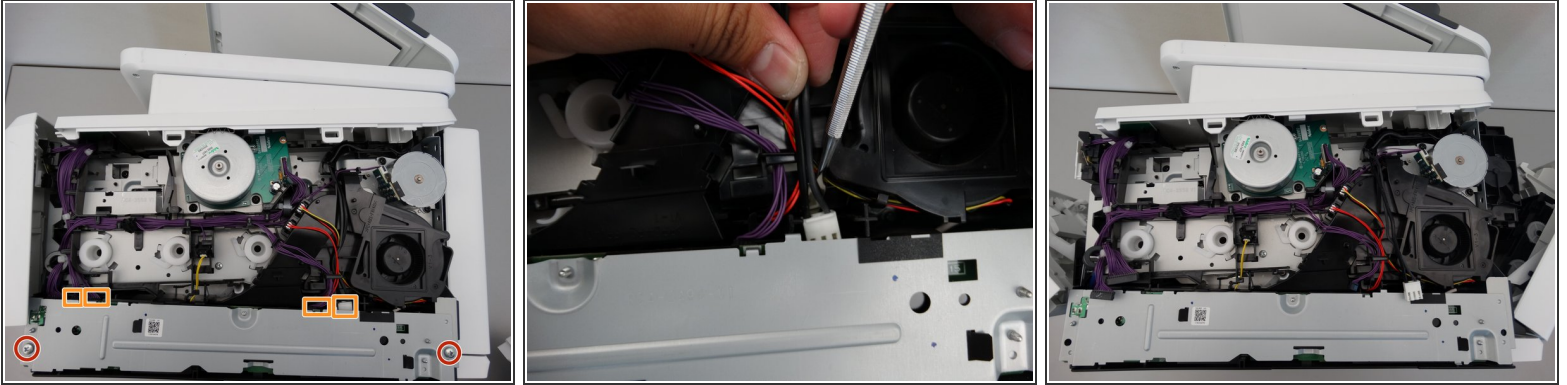
- Open and lower the back panel by pulling it down.
- Remove one Phillips #2 10 mm screw.

Step 2



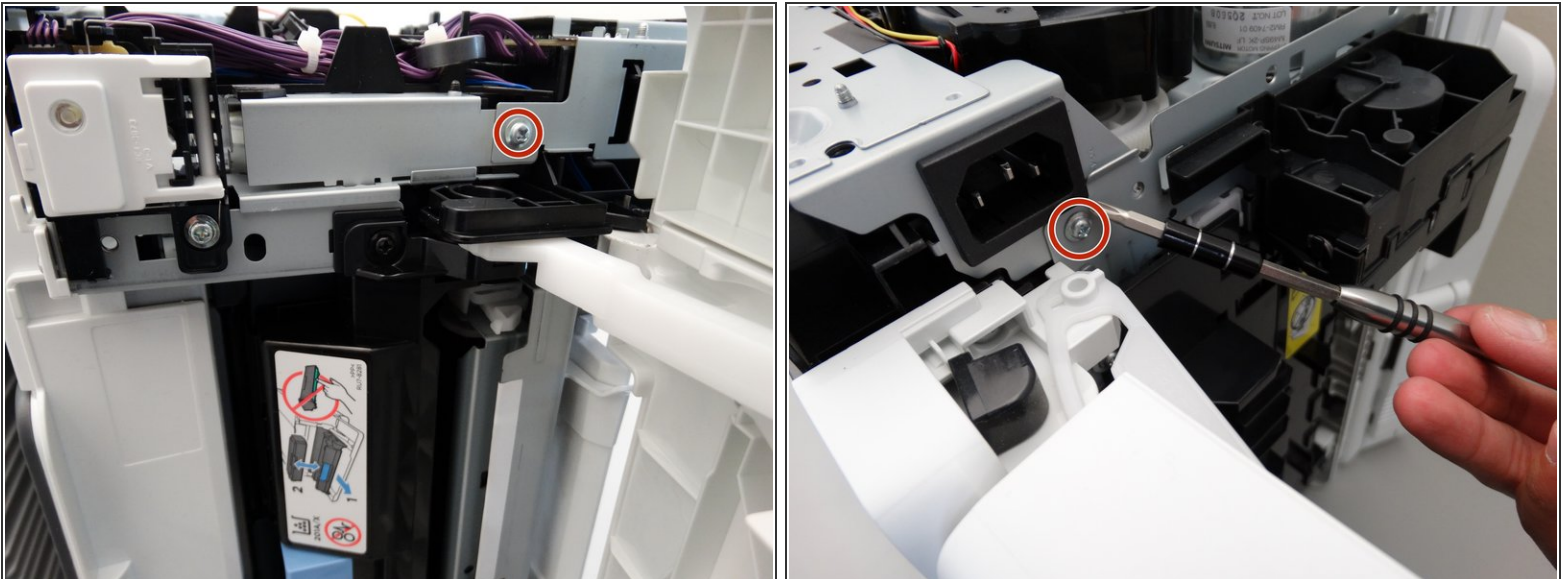
- Use the plastic opening tool to remove the right side panel of the printer.
- ❗ Flipping the printer on its side, with the right side facing up, will make it easier to remove.

Step 3



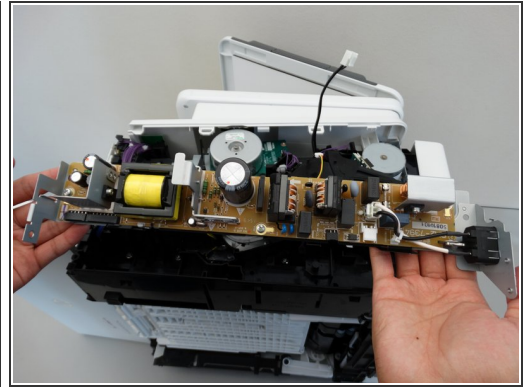
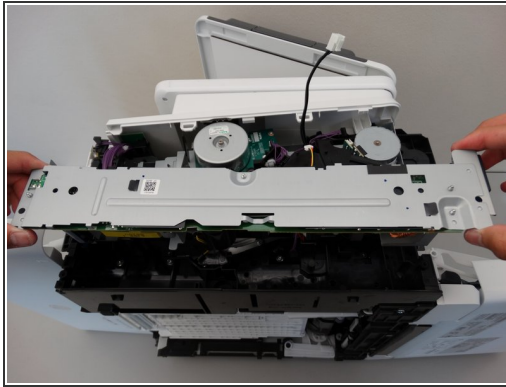
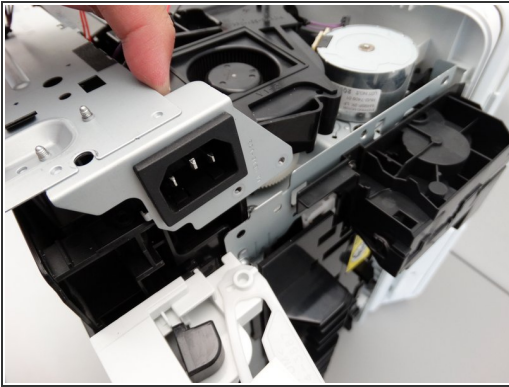
- Remove two Phillips #2 12mm screws.
- Remove four different pin connectors that attach to the power module located at the bottom.
- ❗ Removing the white connector is made easier with assistance of a spudger/flat tip that loosens the clamp.

Step 4



- Remove two Phillips #2 10mm from the left (front) and right (back) side that attach the power module to the printer.

Step 5



- Slowly lift the power module from the printer using both hands.

To reassemble your device, follow these instructions in reverse order.