



Motorola Moto G5s Plus Display Replacement

This guide will help you replace the screen for...

Written By: Kevin George



INTRODUCTION

This guide will help you replace the screen for your Motorola Moto G5s Plus.

Before you begin, download the [Rescue and Smart Assistant](#) app to backup your device and diagnose whether your problem is software or hardware related.

TOOLS:

[Heat Gun](#) (1)

[iFixit Opening Tool](#) (1)

[Suction Handle](#) (1)

[T5 Torx Screwdriver](#) (1)

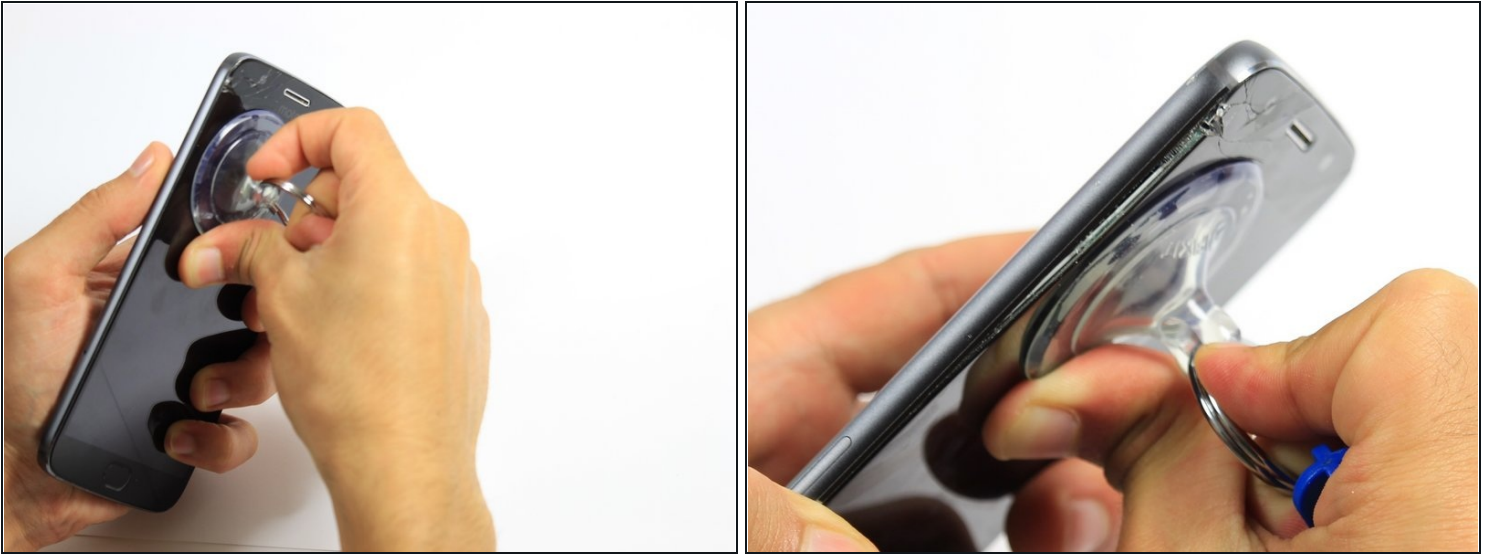
Step 1 — Display



 Power off the phone before you begin.

- Bring the heat gun one to two inches from the edges of the display to melt the display adhesive.
- Spend equal amounts of time applying heat around the entire edge of the phone.

Step 2



- Attach the suction cup to the display slightly to the left of center.
- Exert a moderate force to pull on the suction cup. The display will come loose.

Step 3



- Insert the opening tool inside the loosened edge.
- Gradually work the opening tool around the edge of the entire screen to cut through the adhesive.

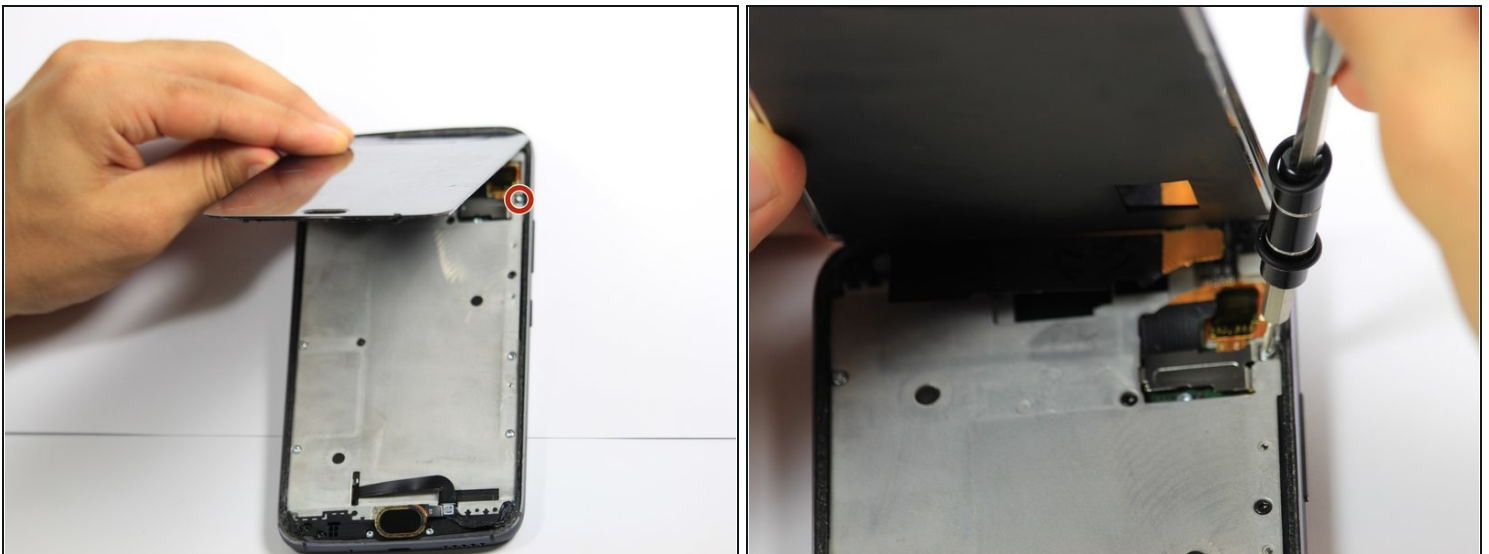
⚠ Do not wedge the opening tool too far beneath the screen. Using too much force can result in torn connector cables.

Step 4



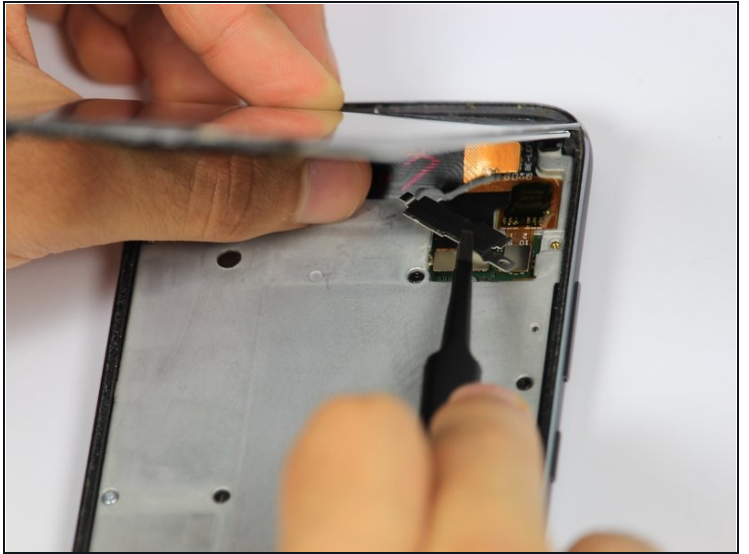
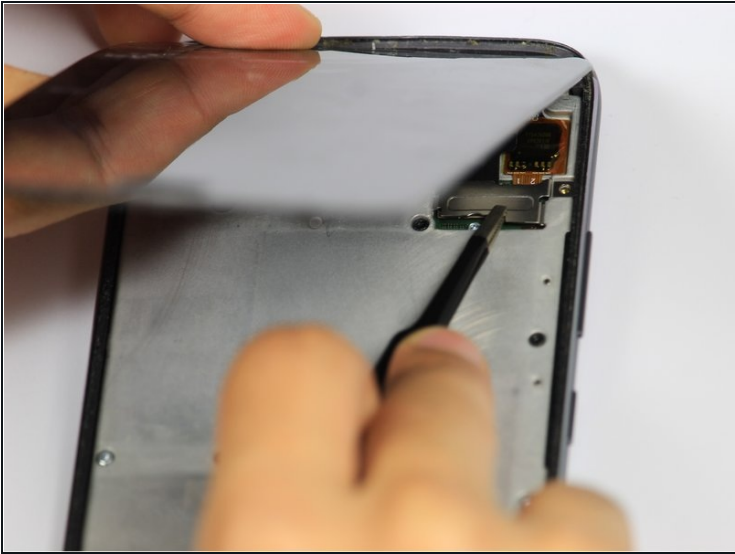
- ① The display should now be entirely loose, attached only by the connectors at the top of the device and the fingerprint sensor connector at the bottom of the device.
- Press down on the fingerprint sensor with the display slightly raised to disconnect it from the display.
- ① If the fingerprint sensor does not come loose, use the heat gun to loosen its adhesive.

Step 5



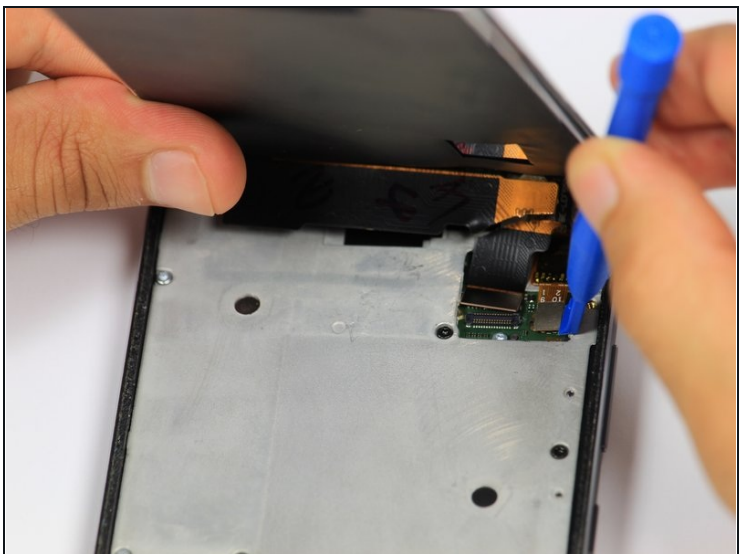
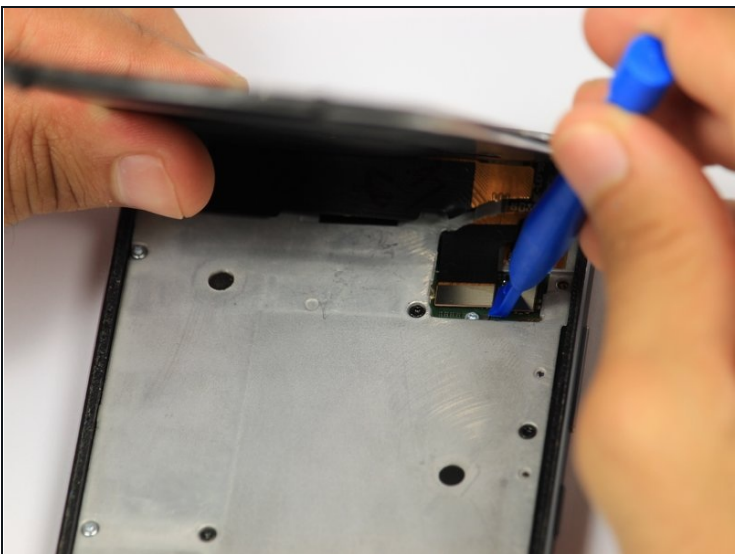
- ⚠ The cables at the top of the device are fragile. If you are using this guide as a prerequisite for replacing another part, be careful not to tear the cables while lifting the screen.
- Remove the one 5mm Torx-5 screw located by the connector cables in the top right corner of the device.

Step 6



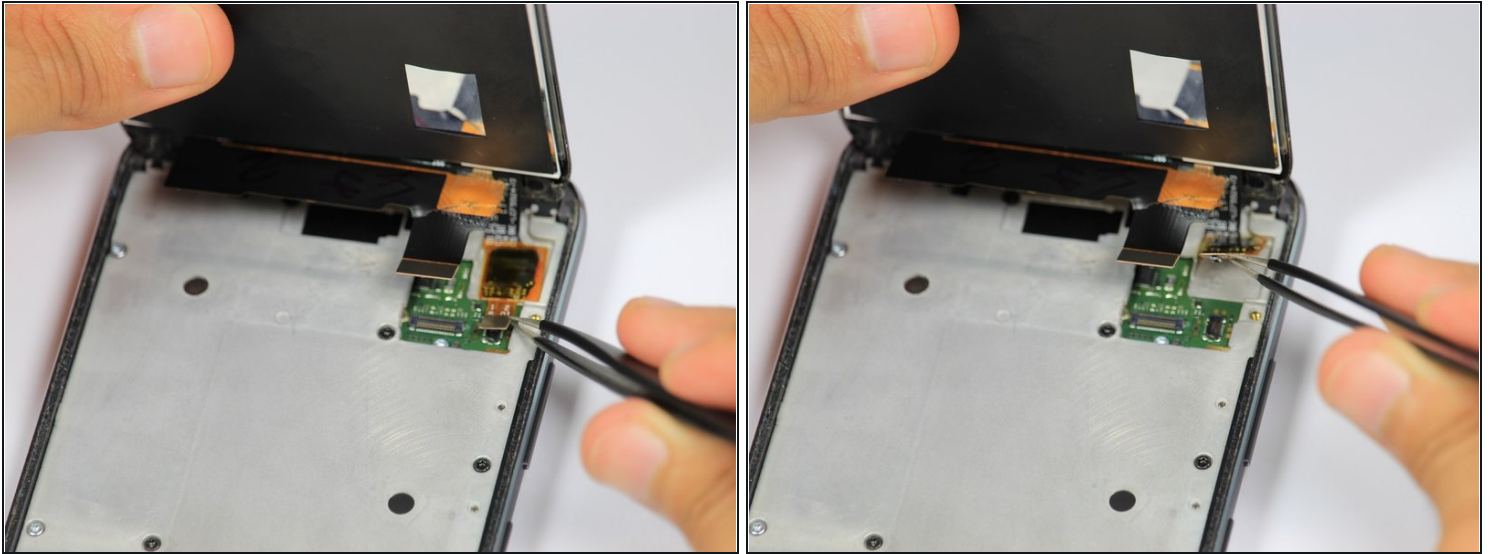
- Grab the unscrewed metal plate with your blunt [tweezers](#).
 - Slide the metal plate to the left and then out to remove it.
- ⓘ Removing the plate will expose the display assembly's connection to the phone's motherboard.

Step 7



- Disengage the two cable connectors by gently prying beneath the edge of the connector with the opening tool.

Step 8



- Lift up the detached right connector from its housing using blunt tweezers.
- ① The housing has light adhesive underneath it. Use a small amount of force to remove the connector from the housing.

To reassemble your device, follow these instructions in reverse order.