



# Sonos Playbase Main Speaker Array Replacement

Remove the main speaker array. This removal allows for access to one or more of the main speakers and the IR Receiver underneath.

Written By: James Andrews



# INTRODUCTION

Caution: Unplug the Sonos Playbase before starting the disassembly to avoid electrocuting yourself.

Replacement of a main speaker requires iFixit prying tools and screwdrivers. Optionally, a heat source helps to more easily remove adhesive while opening up your device.

---

## TOOLS:

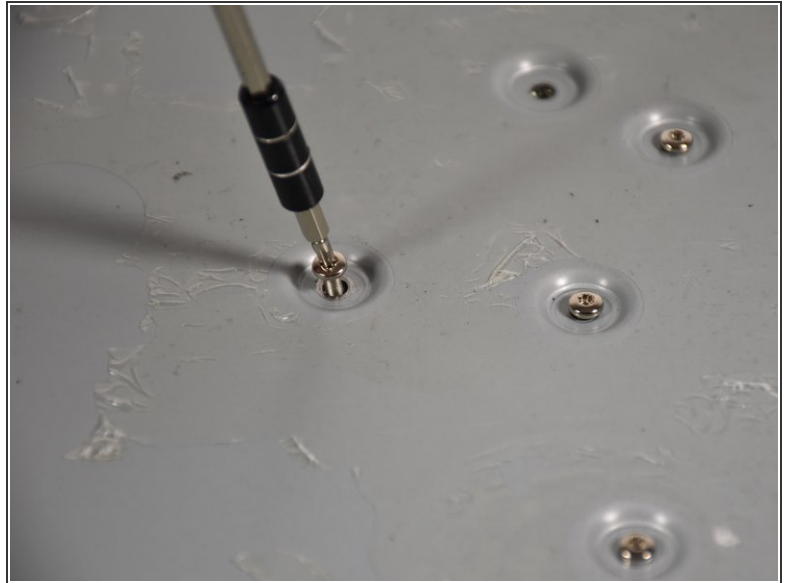
- [T10 Torx Screwdriver](#) (1)
  - [T20 Torx Screwdriver](#) (1)
  - [iOpener](#) (1)
  - [Metal Spudger Set](#) (1)
-

## Step 1 — Bottom Panel



- Turn the Playbase upside down so that the "Sonos Playbase" imprint is face up.
- Remove the bottom panel with an [Opening Tool](#) by inserting underneath and prying upwards.
- ⓘ Melt the adhesive with an [iOpener](#) for ease of opening
- ⓘ Use a [Metal Spudger](#) if the plastic spudgers do not work.
- ⚠ Take care to avoid damaging the plastic or the device if using a metal spudger.

## Step 2




- Remove the fourteen 11mm [T-10](#) screws by turning counter-clockwise.
  - Remove the seven 44mm [T-20](#) screws by turning counter-clockwise.
  - Remove the twenty-two 34mm [T-20](#) screws by turning counter-clockwise.
- ☒ Record where each screw belongs for easier reassembly.

## Step 3



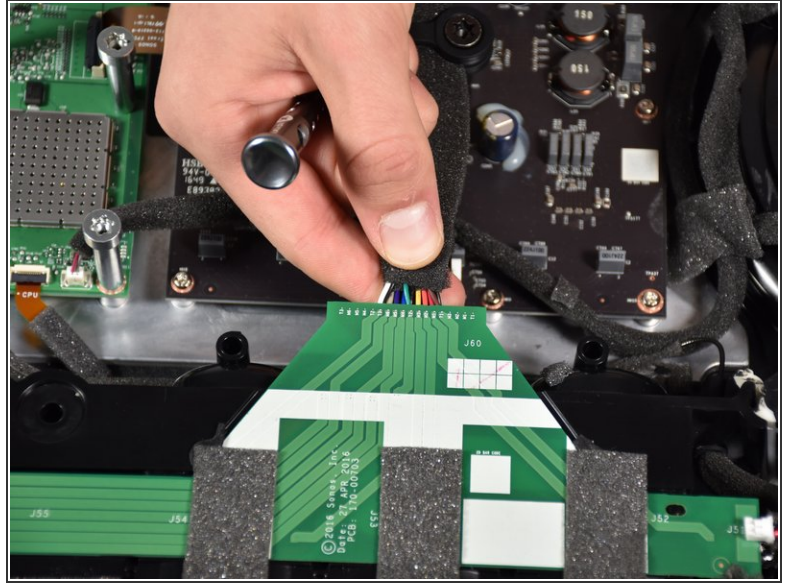
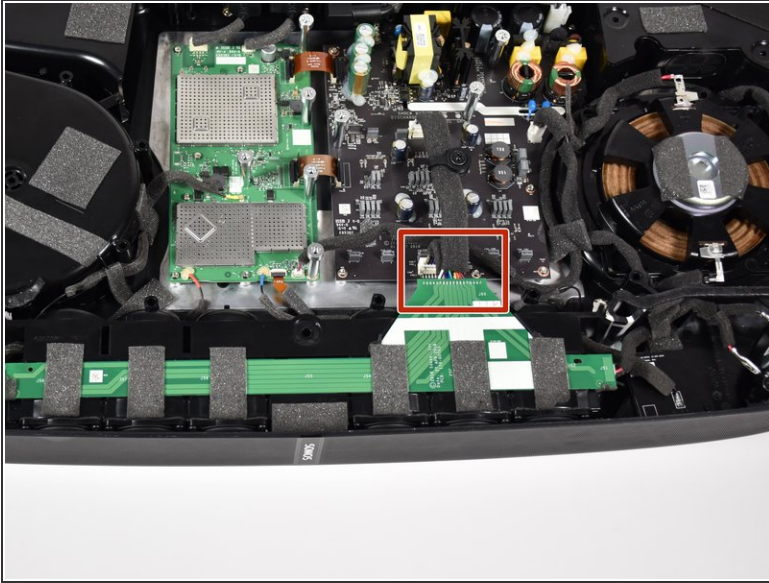
- Remove the metal plate with a [Opening Tool](#) by inserting underneath and prying upwards.

 Use a [metal spudger](#) if plastic openers do not work.

 Take care to avoid damaging the plastic or the device if using a metal spudger.

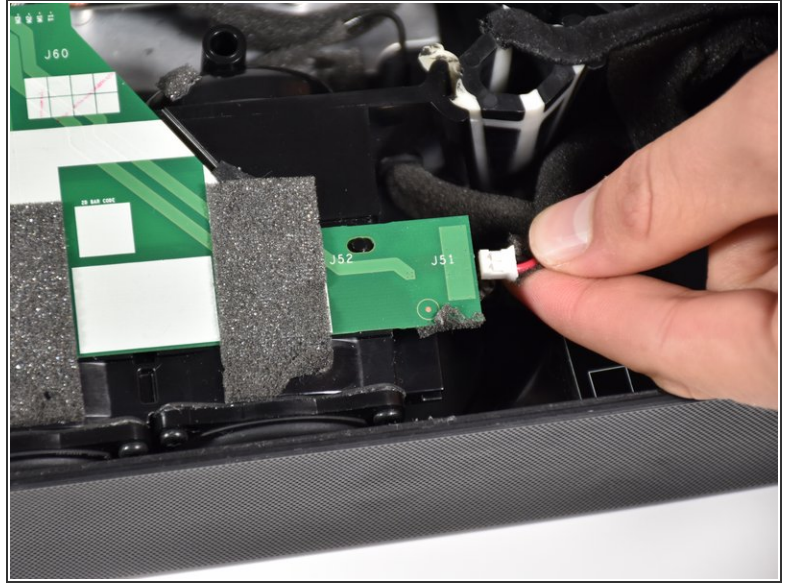
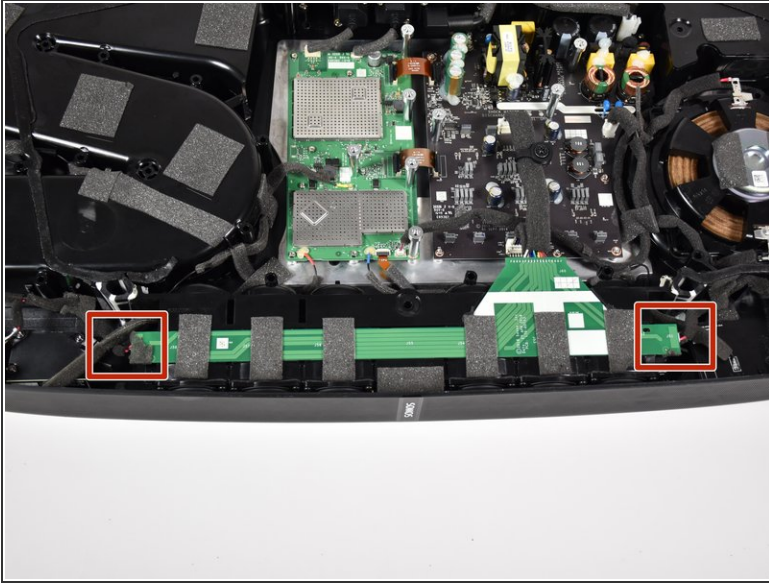


## Step 4 — Main Speaker Array



- Disconnect the main speaker array from the main board, by pinching and pulling the tab out.
- ⓘ See [Recognizing & Disconnecting Cable Connectors](#) for more information.

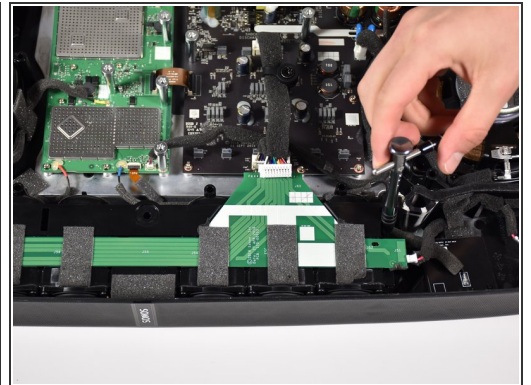
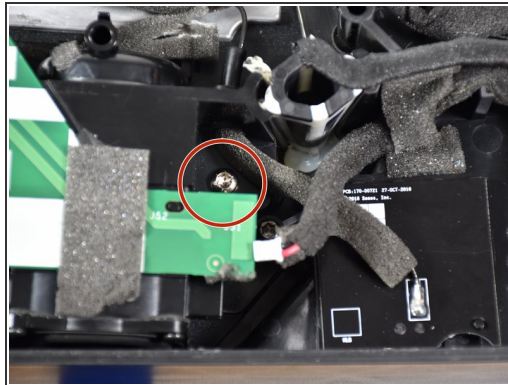
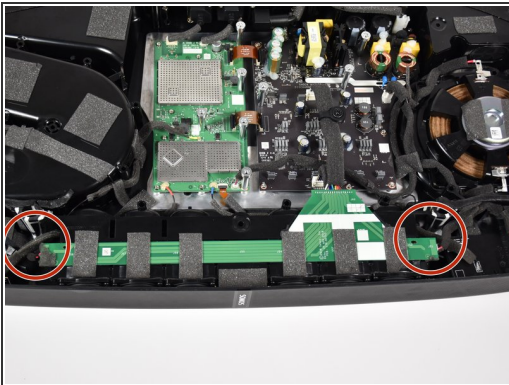
## Step 5



- Remove the side speakers from the green printed circuit board (PCB) running along the top of the main speaker array by pinching and pulling out the connector.

 See [Recognizing & Disconnecting Cable Connectors](#) for more information.

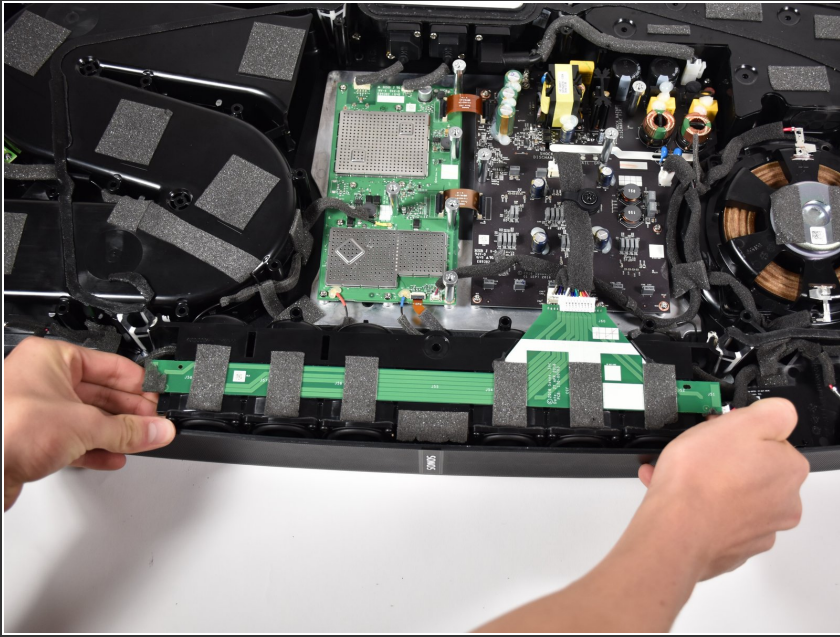
## Step 6



- Remove the two 16mm [T-20](#) screws located on both sides of the main speaker array by turning counter-clockwise.



## Step 7



- Remove the main speaker array by gripping it on both sides and pulling it out.
- ⓘ The array may require a significant amount of force to remove.
- ⓘ Use prying tools as necessary to remove the main speaker array if you are unsuccessful using your hands.
- ⚠ Do not yank the array out too suddenly or too far as this may damage the device.

## Step 8



- Prop the removed main speaker array up on top of the main circuit board.

To reassemble your device, follow these instructions in reverse order.