



Sonos Playbase Bottom Panel Replacement

How to remove the bottom panel of the Sonos Playbase in order to access the rest of the device.

Written By: George Slivka



INTRODUCTION

This guide shows how to replace the bottom panel on the Sonos Playbase. These steps may require the use of an adhesive melter as well as an adhesive to reattach the panel.

Caution: Unplug the Sonos Playbase before starting the disassembly to avoid electrocuting yourself.

TOOLS:

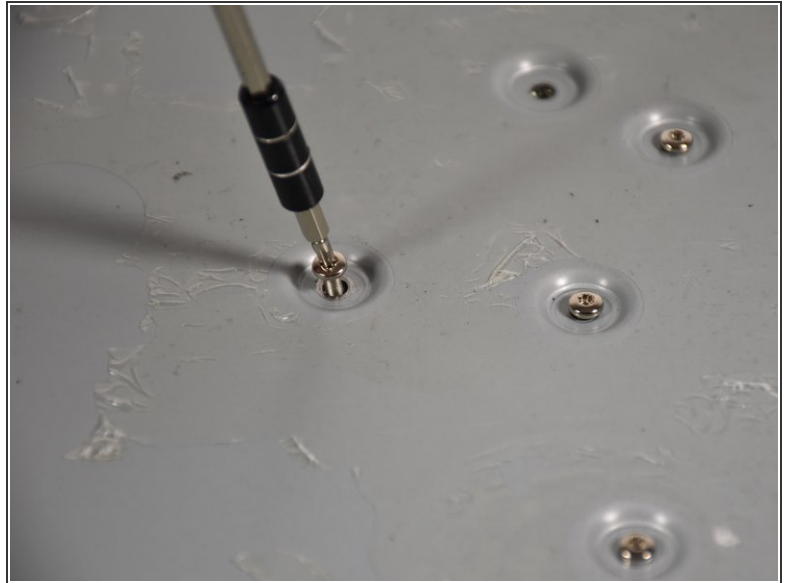
- [iOpener](#) (1)
 - [Metal Spudger Set](#) (1)
 - [T10 Torx Screwdriver](#) (1)
 - [T20 Torx Screwdriver](#) (1)
-

Step 1 — Bottom Panel



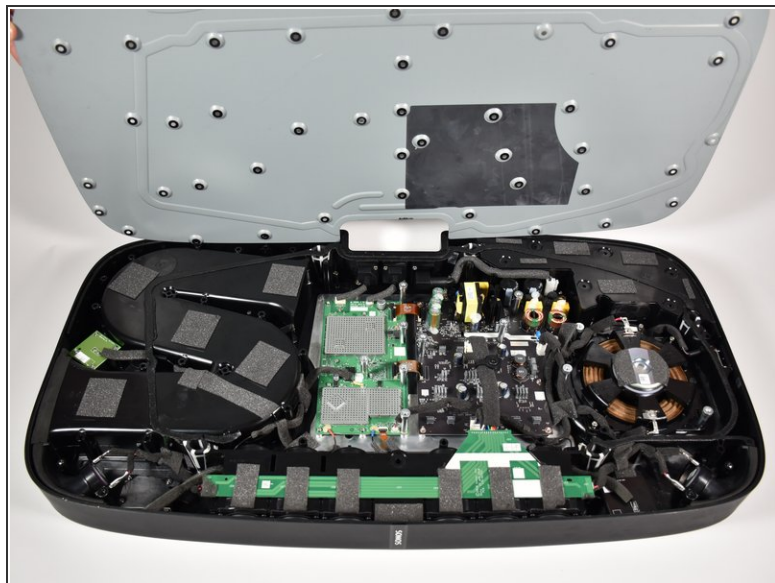
- Turn the Playbase upside down so that the "Sonos Playbase" imprint is face up.
- Remove the bottom panel with an [Opening Tool](#) by inserting underneath and prying upwards.
- ⓘ Melt the adhesive with an [iOpener](#) for ease of opening
- ⓘ Use a [Metal Spudger](#) if the plastic spudgers do not work.
- ⚠ Take care to avoid damaging the plastic or the device if using a metal spudger.

Step 2



- Remove the fourteen 11mm [T-10](#) screws by turning counter-clockwise.
 - Remove the seven 44mm [T-20](#) screws by turning counter-clockwise.
 - Remove the twenty-two 34mm [T-20](#) screws by turning counter-clockwise.
- ☐ Record where each screw belongs for easier reassembly.

Step 3



- Remove the metal plate with a [Opening Tool](#) by inserting underneath and prying upwards.

 Use a [metal spudger](#) if plastic openers do not work.

 Take care to avoid damaging the plastic or the device if using a metal spudger.

To reassemble your device, follow these instructions in reverse order.