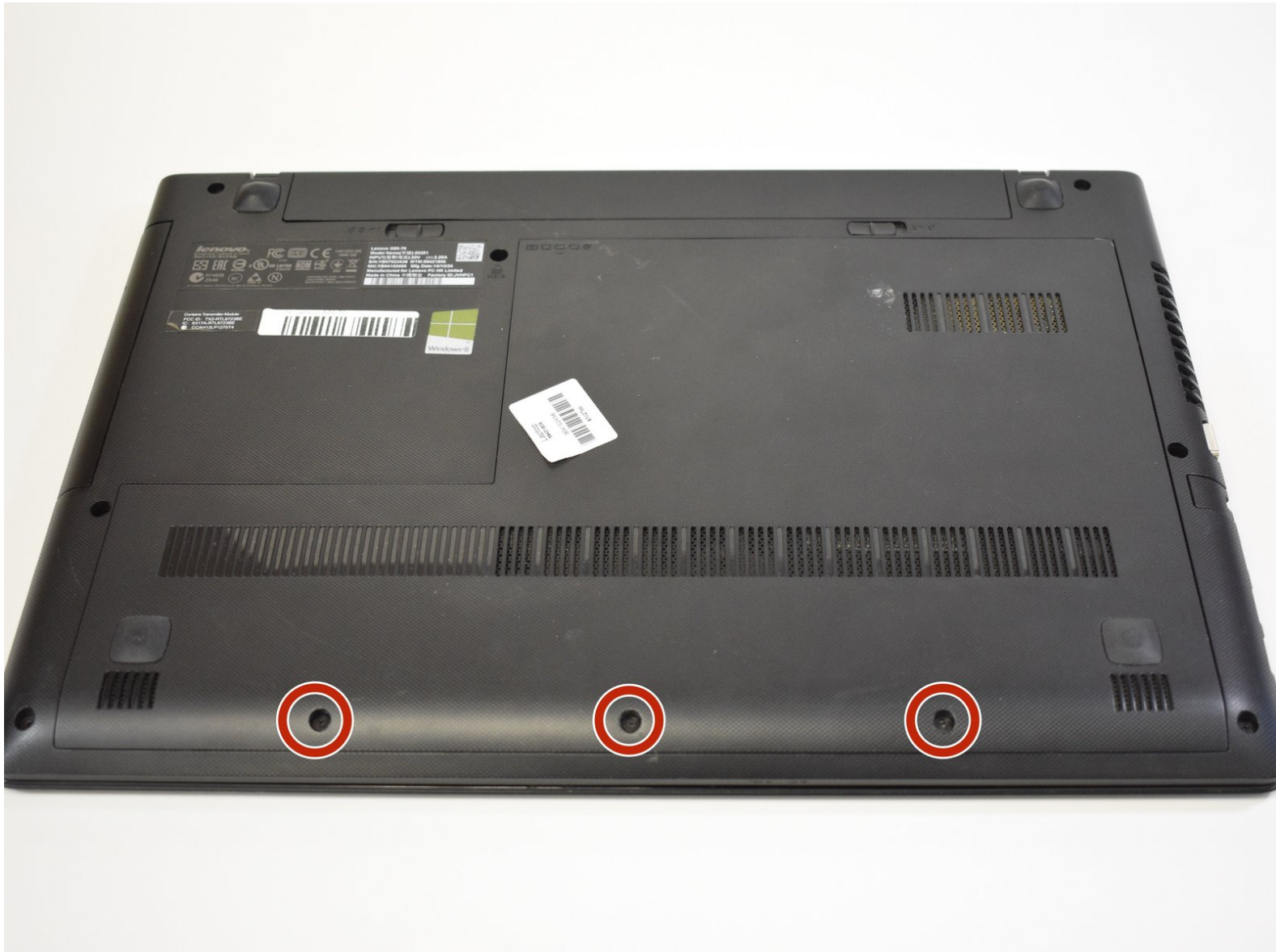




Lenovo G50-70 Back Access Panel Replacement

To access internals of the Lenovo G50-70, the back access panel must be removed.

Written By: Caleb DesJardins



INTRODUCTION

Many of the replacement guides for this model will be internal parts that are accessed by first removing the back access panel. Removing this part is very simple; the only tool needed is a small Philips screwdriver to remove three screws. Removing this part gives access necessary for future guides.



TOOLS:

- [Phillips #0 Screwdriver](#) (1)
-

Step 1 — Back Access Panel



- Remove the three 6mm Phillips #0 screws holding the back access panel on.

Step 2



- Slide the cover toward you to unlatch it.
- The edge of the panel will slide away from the laptop so it can be lifted.

To reassemble your device, follow these instructions in reverse order.